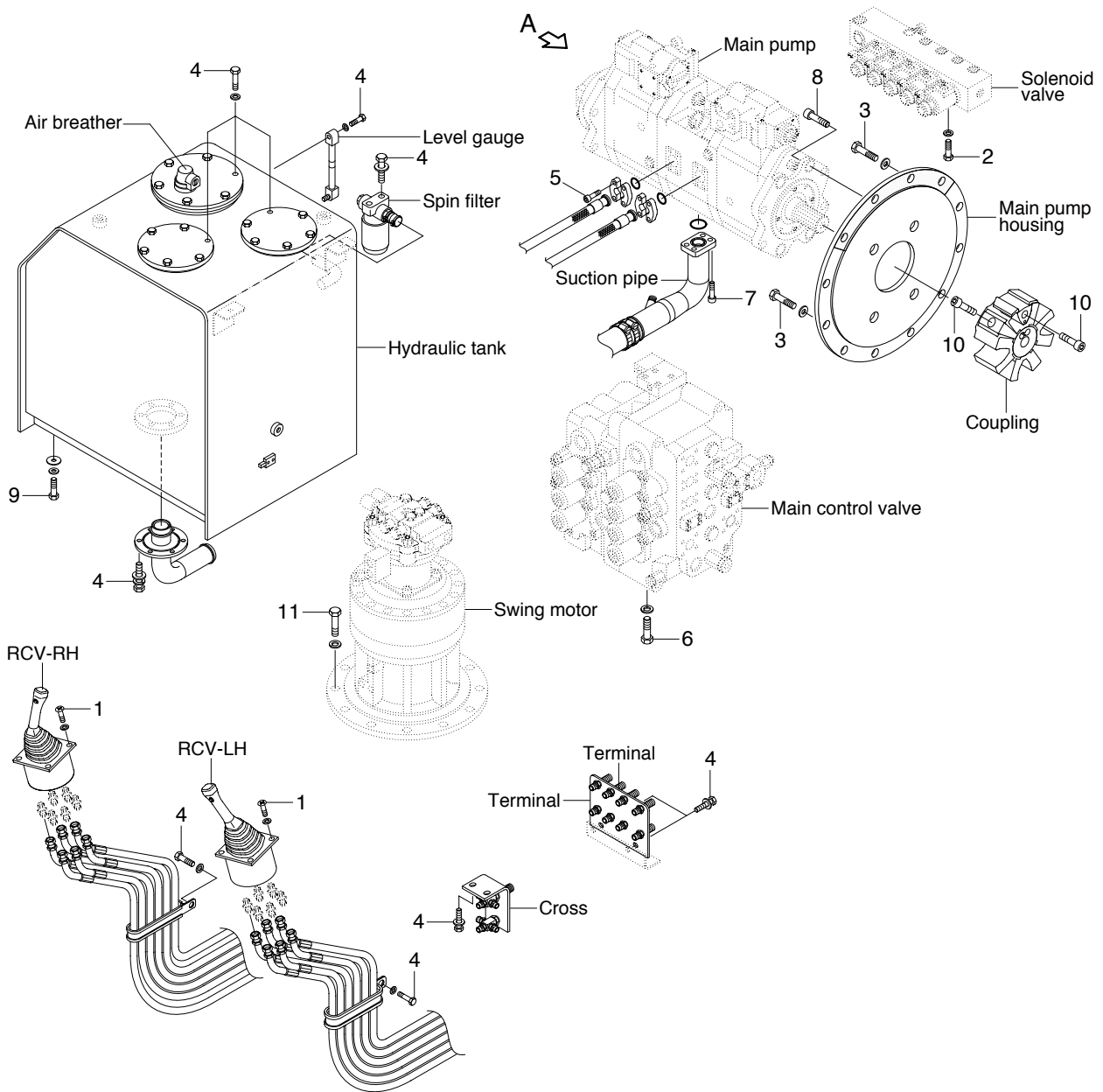


# GROUP 4 HYDRAULIC SYSTEM

## HYDRAULIC COMPONENTS MOUNTING 1



36079CM05

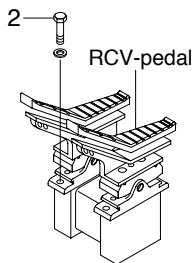
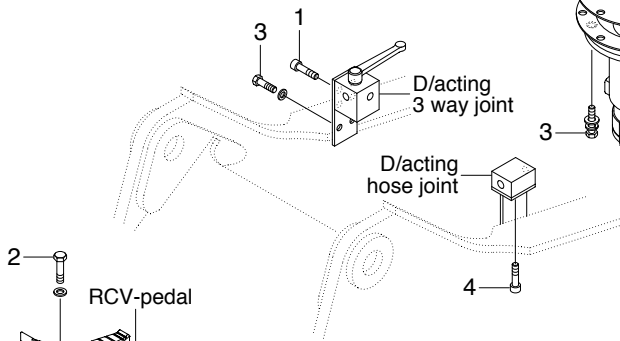
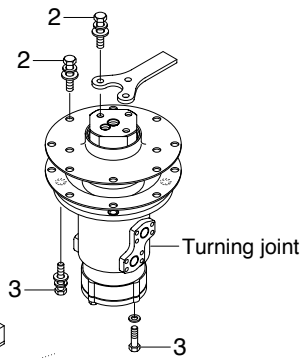
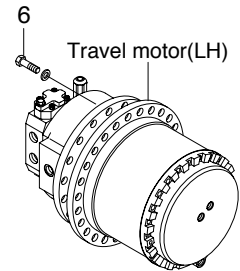
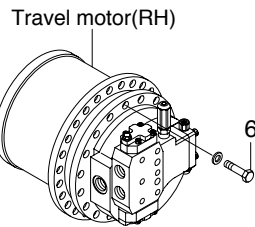
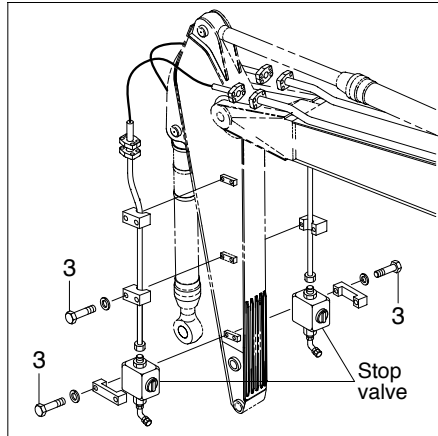
### · Tightening torque

Item	Size	kgf · m	lbf · ft
1	M 6 × 1.0	1.05 ± 0.2	7.6 ± 1.45
2	M 8 × 1.25	2.5 ± 0.5	18.1 ± 3.6
3	M10 × 1.5	2.81 ± 0.3	20.3 ± 2.2
4	M10 × 1.5	6.9 ± 1.4	49.9 ± 10.1
5	M12 × 1.75	14.7 ± 2.2	106 ± 15.9
6	M16 × 2.0	19.5 ± 1.3	141 ± 9.4

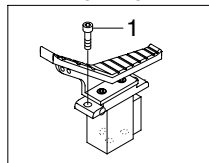
Item	Size	kgf · m	lbf · ft
7	M16 × 2.0	35.6 ± 7.1	257 ± 51
8	M20 × 2.5	42 ± 4.5	304 ± 32.5
9	M20 × 2.5	46 ± 5.0	333 ± 36
10	M20 × 2.5	46.5 ± 2.5	336 ± 18.1
11	M24 × 3.0	100 ± 15	723 ± 108
-	-	-	-

## HYDRAULIC COMPONENTS MOUNTING 2

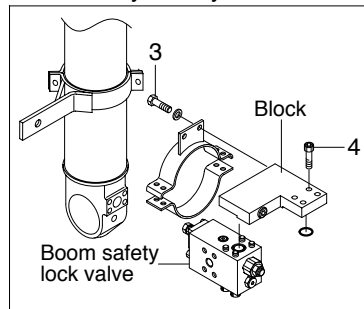
### Double acting attachment piping



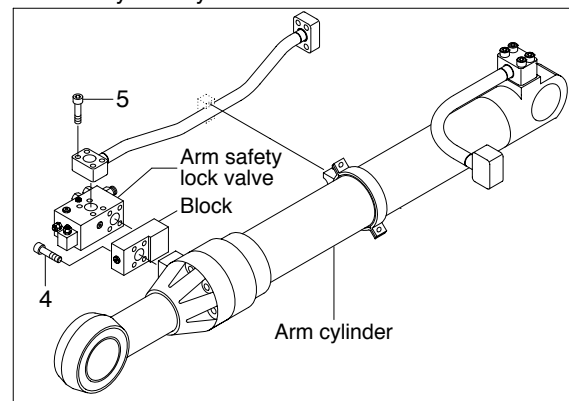
### D/acting single pedal



### Boom safety lock system



### Arm safety lock system



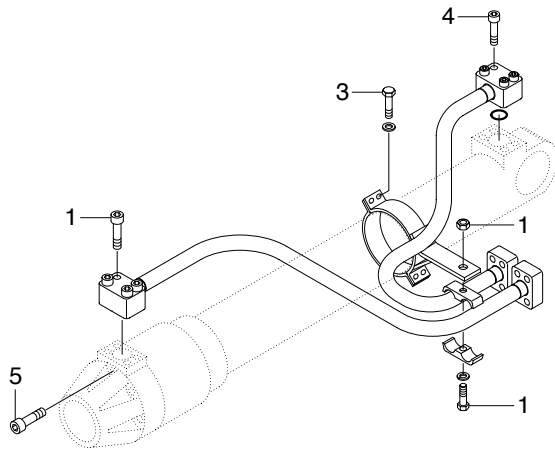
36079CM06

### · Tightening torque

Item	Size	kgf · m	lbf · ft
1	M 8 × 1.25	4.05 ± 0.8	29.3 ± 5.8
2	M10 × 1.5	6.9 ± 1.4	49.9 ± 10.1
3	M12 × 1.75	12.8 ± 3.0	92.6 ± 21.7

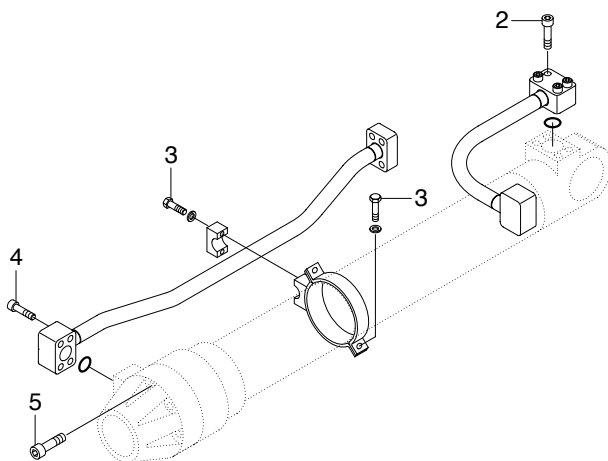
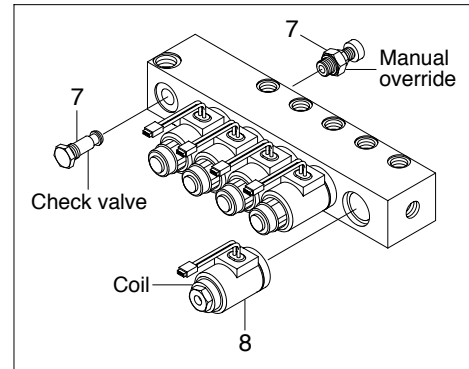
Item	Size	kgf · m	lbf · ft
4	M12 × 1.75	9.4 ± 1.0	68.0 ± 7.2
5	M12 × 1.75	14.7 ± 2.2	106 ± 15.9
6	M20 × 2.5	43.8 ± 4.0	317 ± 29

## HYDRAULIC COMPONENTS MOUNTING 3

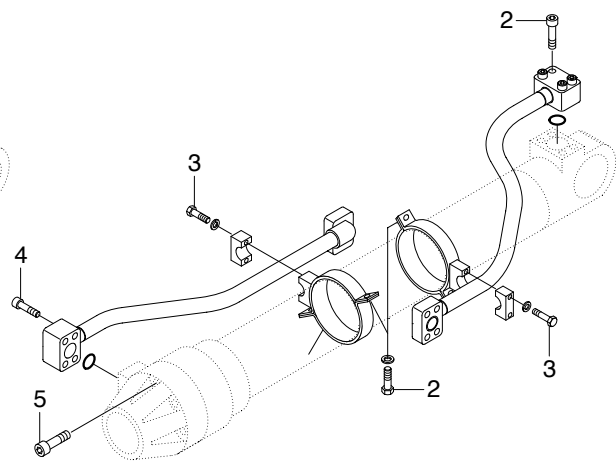


BOOM CYLINDER

Solenoid valve



ARM CYLINDER



BUCKET CYLINDER

36079CM07

· Tightening torque

Item	Size	kgf · m	lbf · ft
1	M12 × 1.75	5.5 ± 0.6	39.8 ± 4.3
2	M12 × 1.75	9.4 ± 1.0	68.0 ± 7.2
3	M14 × 2.0	9.0 ± 1.0	65.1 ± 7.2
4	M24 × 3.0	79 ± 8.0	571 ± 57.9

Item	Size	kgf · m	lbf · ft
5	M20 × 2.5	46 ± 5.0	333 ± 36.2
6	M27 × 3.0	116 ± 12	839 ± 86.8
7	M22 × 2.5	4.1	29.6
8	M27 × 3.0	5.1	36.9