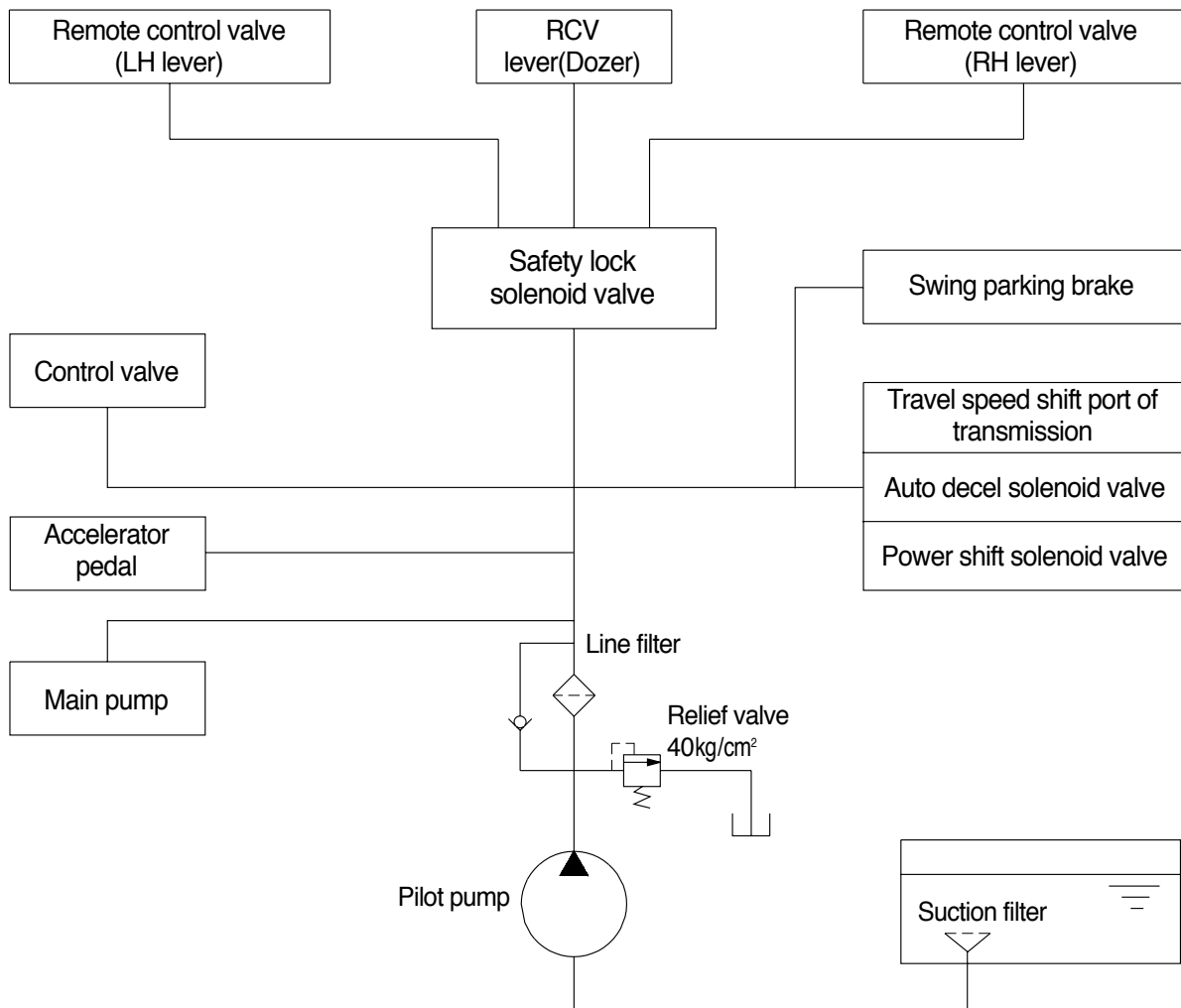


## GROUP 3 PILOT CIRCUIT

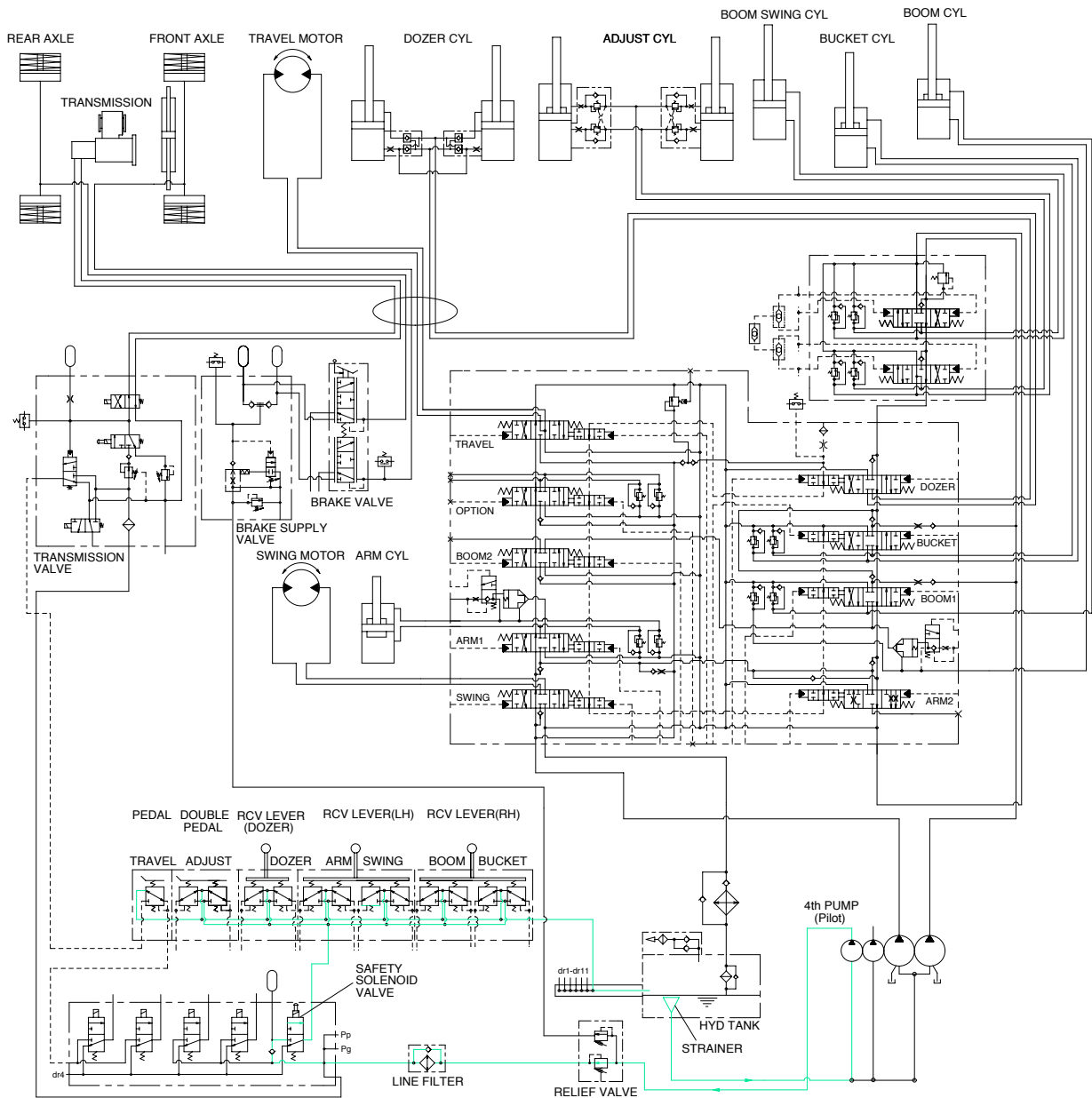


The pilot circuit consists of suction circuit, delivery circuit and return circuit.

The pilot pump is provided with relief valve, receives the oil from the hydraulic tank through the suction filter.

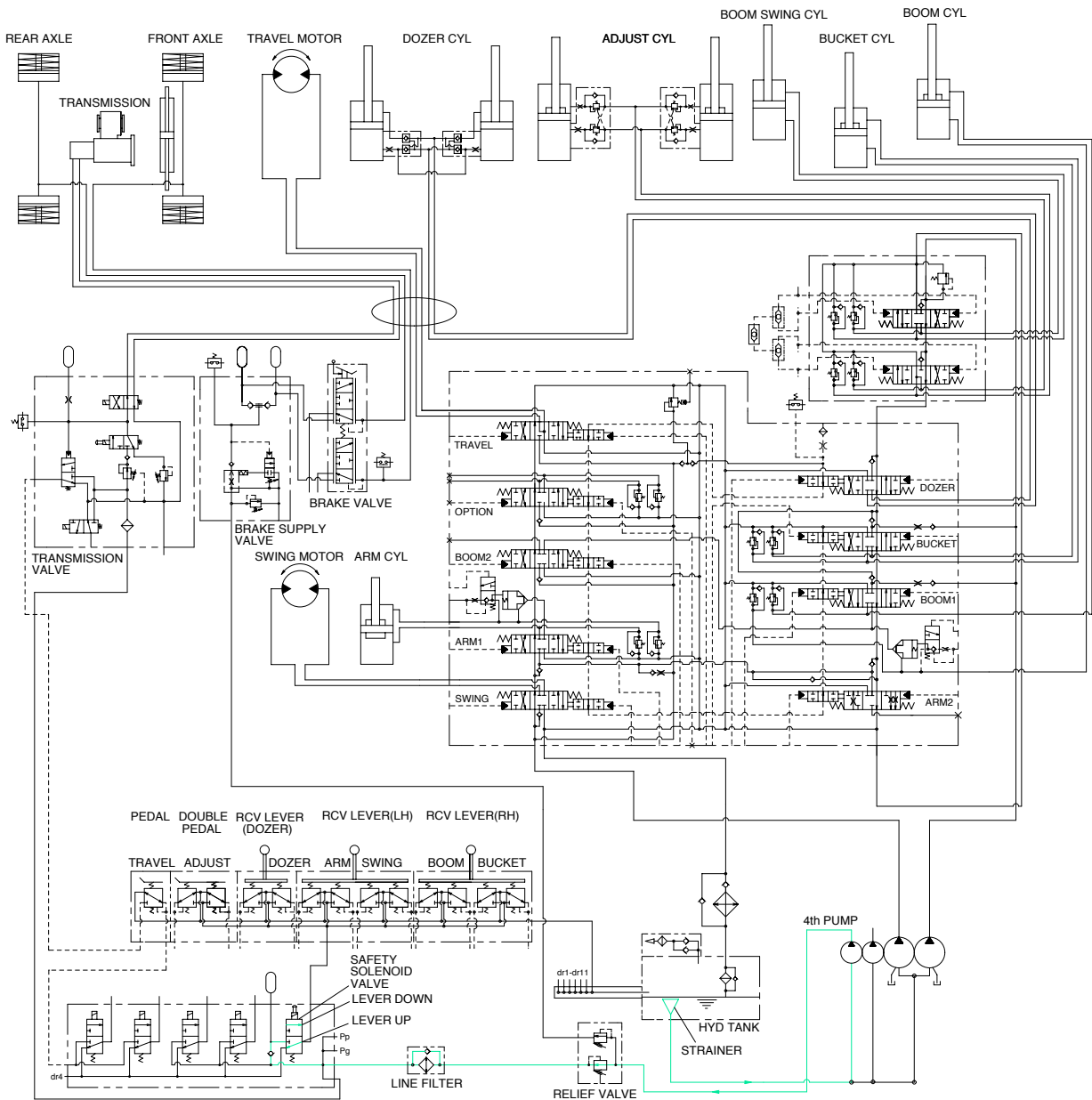
The discharged oil from the pilot pump flows to the remote control valve through line filter, EPPR valve, solenoid valve assemblies, swing parking brake, main control valve and safety lock solenoid valve through line filter.

# 1. SUCTION, DELIVERY AND RETURN CIRCUIT



The pilot pump receives oil from the hydraulic tank. The discharged oil from the pilot pump flows to the safety solenoid valve through the line filter. The oil is filtered by the line filter. The pilot relief valve is provided in the 4th pump for limiting the pilot circuit pressure. The oil filtered by line filter flows into the remote control valve through safety solenoid valve. The return oil from remote control valve is returned to hydraulic tank.

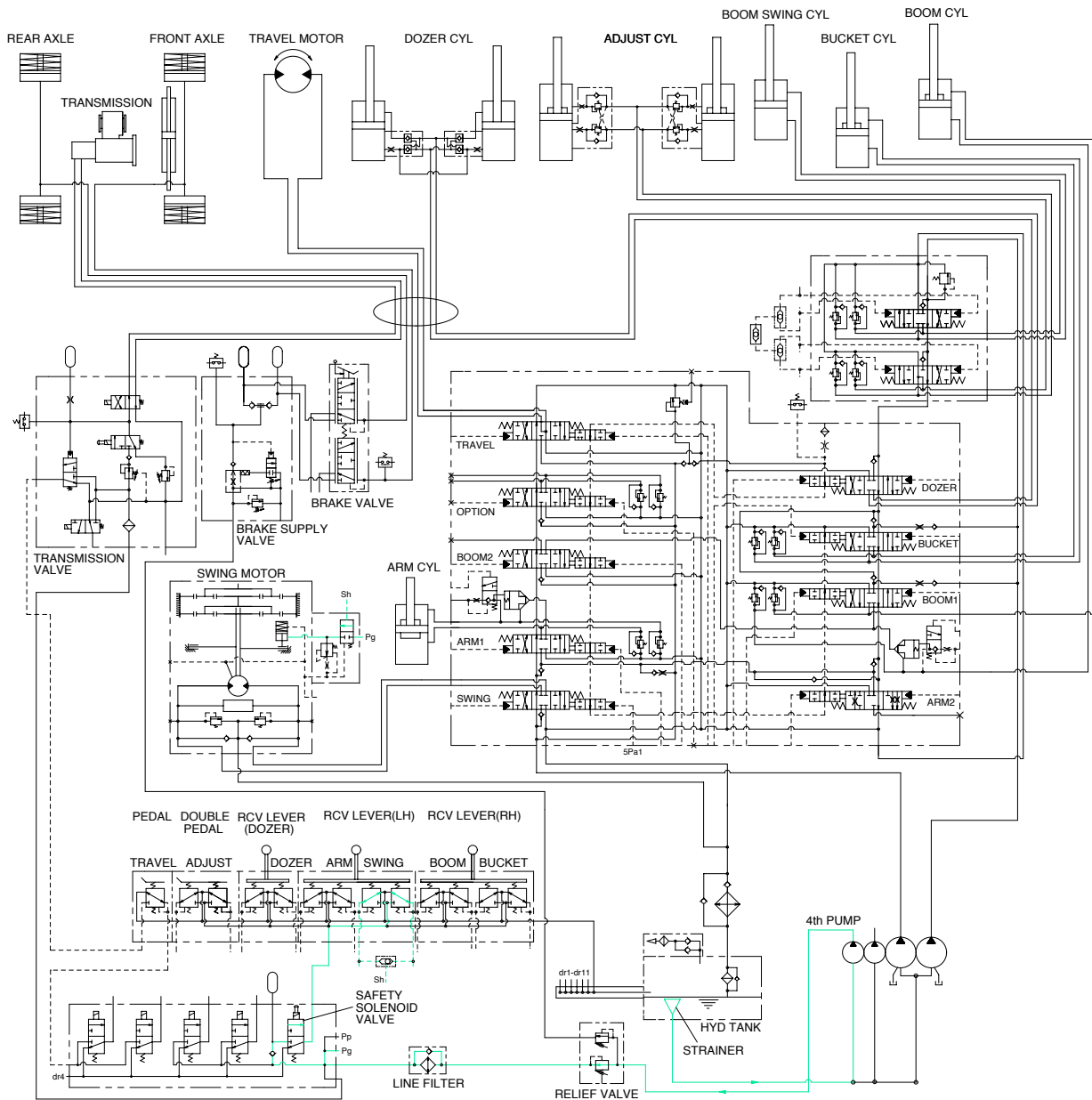
## 2. SAFETY SOLENOID VALVE(SAFETY LEVER)



When the lever of the safety solenoid valve is moved downward, oil flows into the remote control valve through solenoid valve and line filter.

When the lever of the safety solenoid valve is moved upward, oil does not flow into the remote control valve because of block by the spool.

### 3. SWING PARKING BRAKE RELEASE

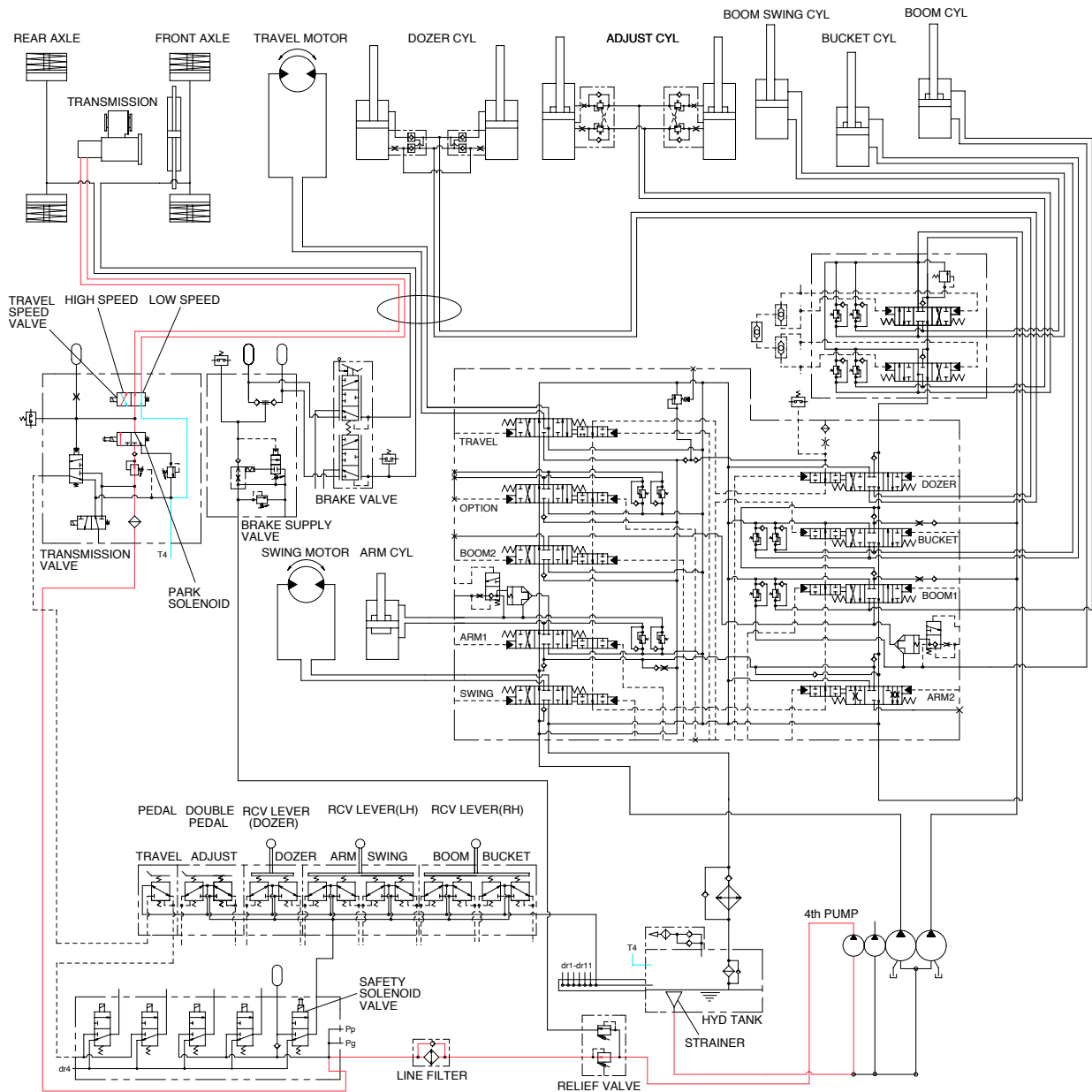


When the swing control lever is operated, the pilot oil flows to Sh port of shuttle valve, this pressure moves spool so, discharged oil from 4th pump flows to Pg port.

This pressure is applied to swing motor disc cylinder, thus the brake is released.

When the swing control lever is set in neutral position, oil in the swing motor disc cylinder is drained, thus the brake is applied.

#### 4. TRAVEL SPEED CONTROL PRESSURE



When LH multifunction switch was placed in high or low speed position, the pressure oil from 4th pump flows through parking solenoid valve of transmission control valve to travel speed solenoid valve, thus the transmission is changed into high or low speed condition.