

GROUP 11 TURNING JOINT

1. REMOVAL AND INSTALL

1) REMOVAL

- (1) Lower the work equipment to the ground and stop the engine.
- (2) Operate the control levers and pedals several times to release the remaining pressure in the hydraulic piping.
- (3) Loosen the breather slowly to release the pressure inside the hydraulic tank.

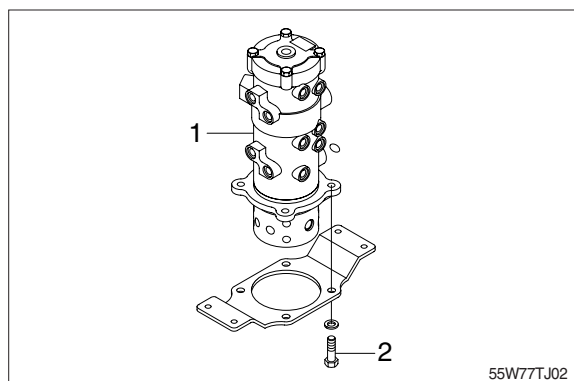
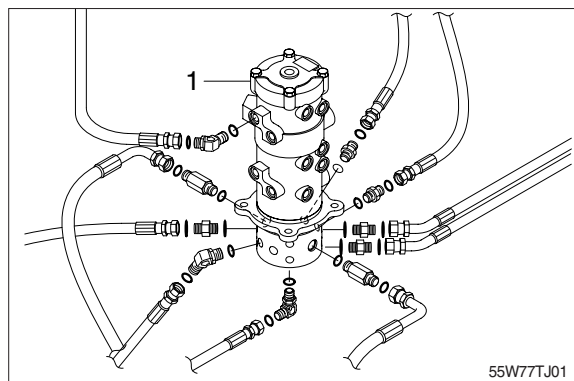
▲ Escaping fluid under pressure can penetrate the skin causing serious injury.

※ When pipes and hoses are disconnected, the oil inside the piping will flow out, so catch it in oil pan.

- (4) Disconnect all hoses.
 - (5) Sling the turning joint assembly (1) and remove the mounting bolt (2).
 - Weight : 30 kg (70 lb)
 - Tightening torque : $14.7 \pm 2.2 \text{ kgf} \cdot \text{m}$
($106 \pm 15.9 \text{ lbf} \cdot \text{ft}$)
 - (6) Remove the turning joint assembly.
- ※ When removing the turning joint, check that all the hoses have been disconnected.

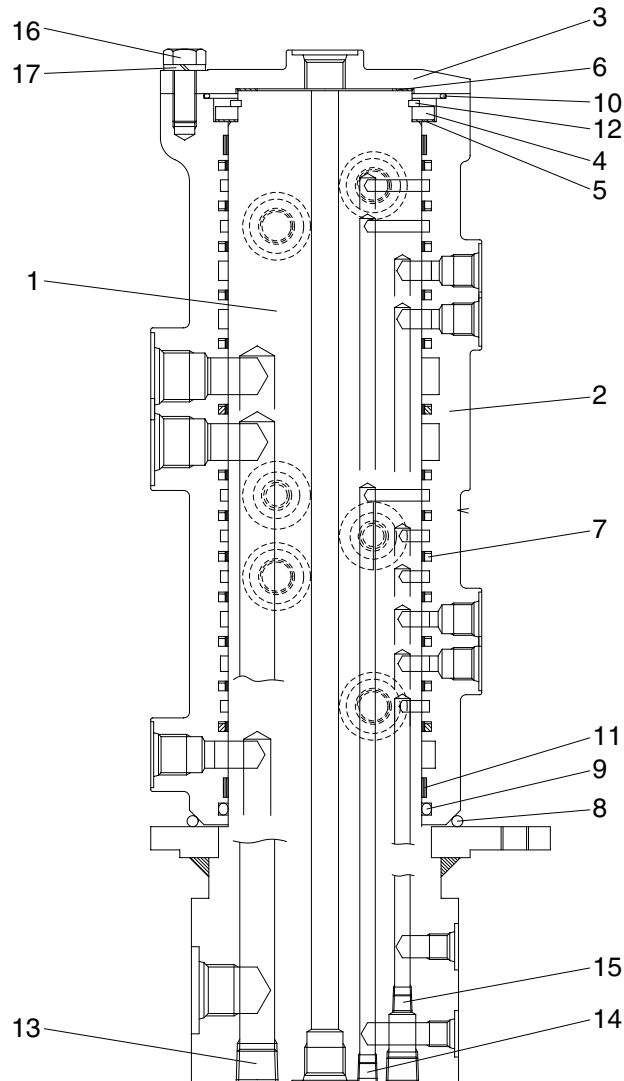
2) INSTALL

- (1) Carry out installation in the reverse order to removal.
 - ※ Take care of turning joint direction.
 - ※ Assemble hoses to their original positions.
 - ※ Confirm the hydraulic oil level and check the hydraulic oil leak or not.



2. DISASSEMBLY AND ASSEMBLY

1) STRUCTURE



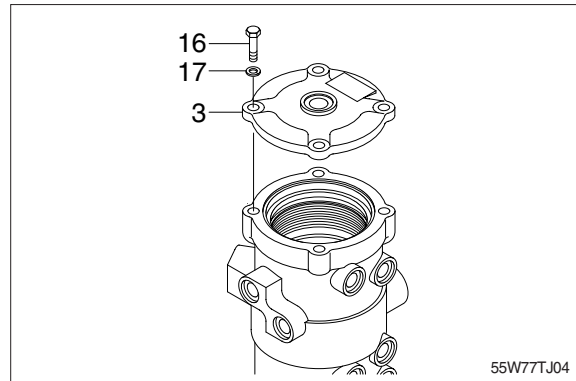
55W77TJ03

- | | | | | | |
|---|--------|----|---------------|----|---------------|
| 1 | Shaft | 7 | Slipper seal | 13 | Plug |
| 2 | Hub | 8 | O-ring | 14 | Plug |
| 3 | Cover | 9 | O-ring | 15 | Plug |
| 4 | Spacer | 10 | O-ring | 16 | Hexagon bolt |
| 5 | Shim | 11 | Wear ring | 17 | Spring washer |
| 6 | Shim | 12 | Retainer ring | | |

2) DISASSEMBLY

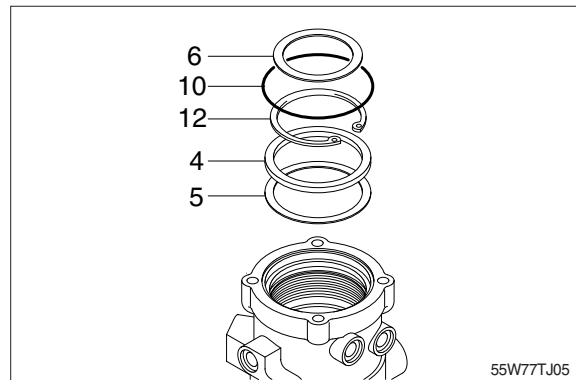
※ Before the disassembly, clean the turning joint.

- (1) Loosen the bolts (16), washer (17) and remove cover (3).



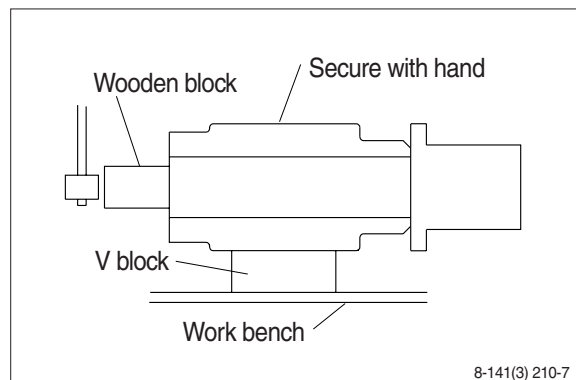
- (2) Remove shim (6) and O-ring (7).

- (3) Remove retainer ring (12), spacer (4) and shim (5).

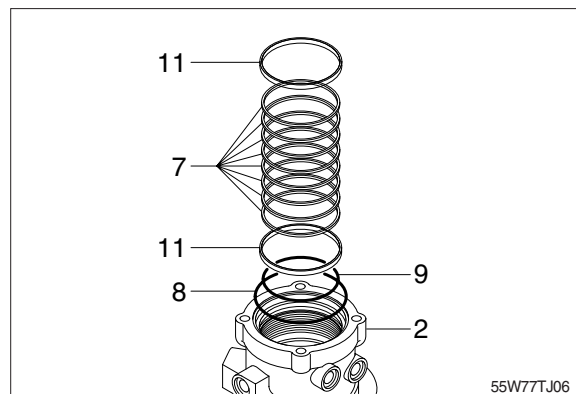


- (4) Place hub (2) on a V-block and by using a wood buffer at the shaft end, hit out shaft (2) to about 1/2 from the body with a hammer.

※ Take care not to damage the shaft (1) when remove hub (2) or rest it sideways.
※ Put a fitting mark on hub (2) and shaft (1).



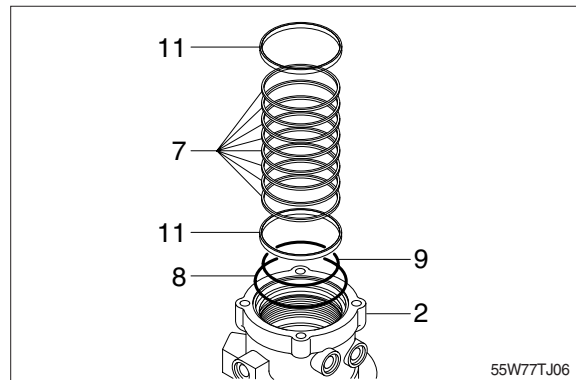
- (5) Remove wear rings (11), thirteen slipper seals (7) and O-rings (8, 9) from hub (2).



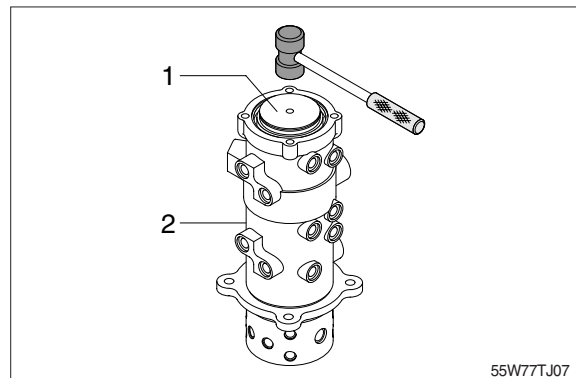
3) ASSEMBLY

- ※ Clean all parts.
- ※ As a general rule, replace oil seals and O-ring.
- ※ Coat the sliding surfaces of all parts with engine oil or grease before installing.

(1) Fix wear rings (11), thirteen slipper seals (7) and O-rings (8, 9) to hub (2).

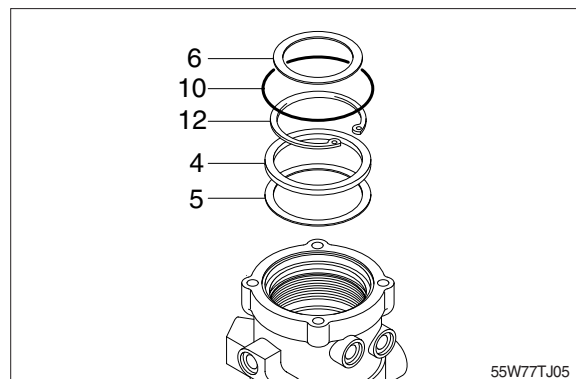


(2) Set shaft (1) on block, tap hub (2) with a plastic hammer to install.



(3) Fit shim (5), spacer (4) and retainer ring (12) to shaft (11).

(4) Fit O-ring (7) to hub (2).



(5) Install cover (3) to hub (2) and tighten bolts (16) with washer (13).

