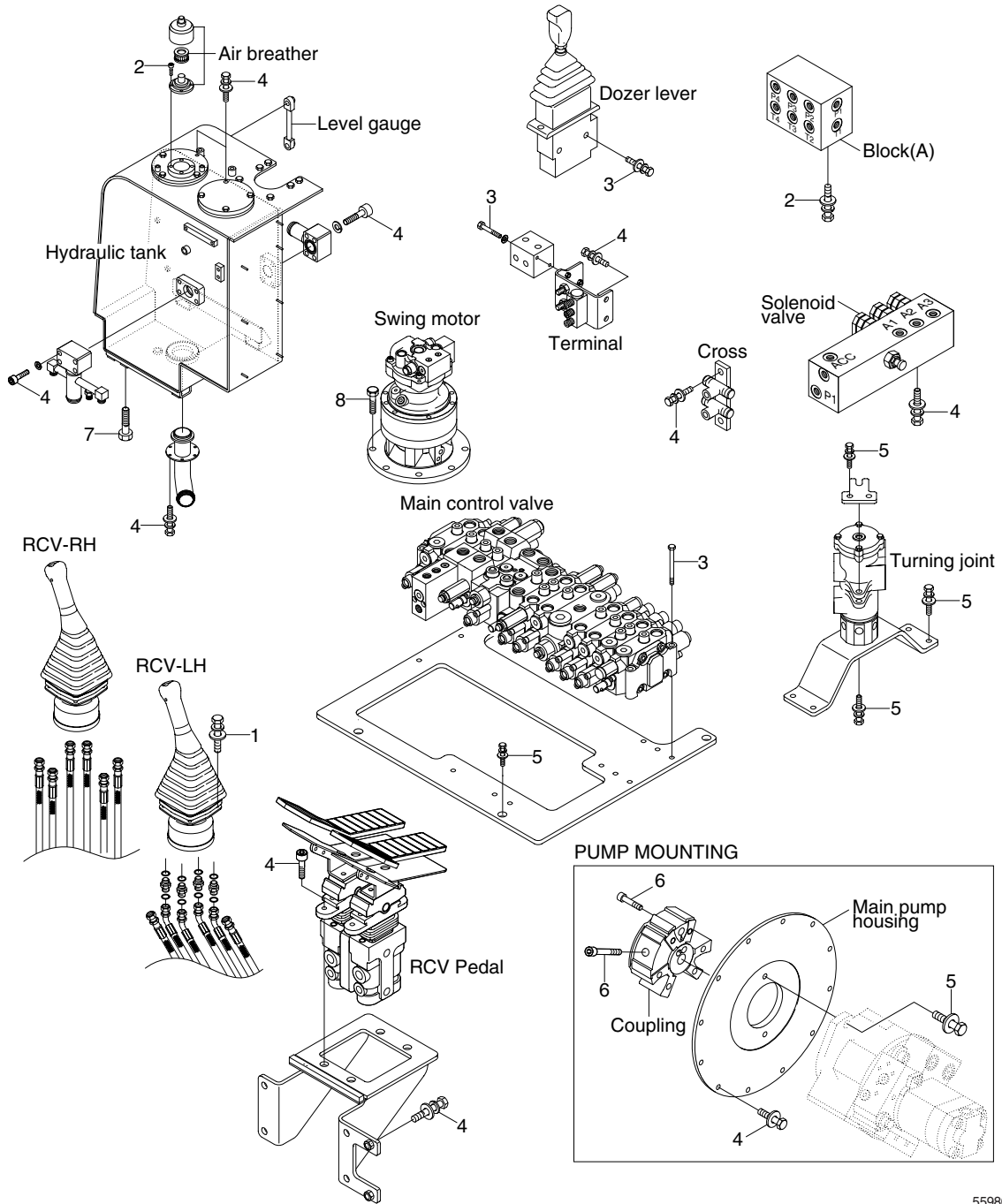


# GROUP 4 HYDRAULIC SYSTEM

## 1. HYDRAULIC COMPONENTS MOUNTING 1



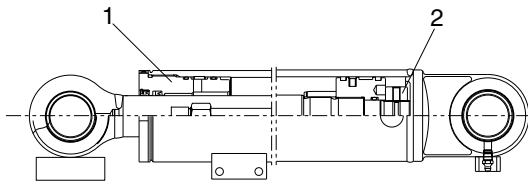
5598CM05

### • Tightening torque

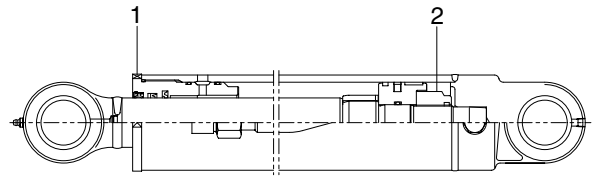
| Item | Size     | kgf · m  | lbf · ft  |
|------|----------|----------|-----------|
| 1    | M 6×1.0  | 1.05±0.2 | 7.6±1.45  |
| 2    | M 6×1.0  | 1.44±0.3 | 10.4±2.2  |
| 3    | M 8×1.25 | 2.5±0.5  | 18.1±3.6  |
| 4    | M10×1.5  | 6.9±1.4  | 49.9±10.1 |

| Item | Size     | kgf · m  | lbf · ft |
|------|----------|----------|----------|
| 5    | M12×1.75 | 12.2±1.3 | 88.2±9.4 |
| 6    | M14×2.0  | 14.0±1.0 | 101±7.2  |
| 7    | M16×2.0  | 25.0±2.5 | 118±18.1 |
| 8    | M16×2.0  | 29.7±4.5 | 215±33.0 |

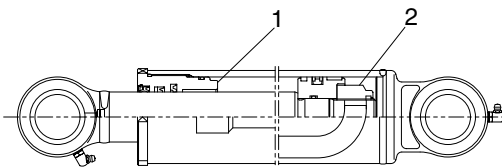
## 2. HYDRAULIC COMPONENTS MOUNTING 2



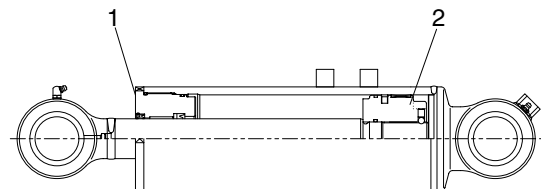
BOOM CYLINDER



ARM CYLINDER



BUCKET CYLINDER



DOZER CYLINDER

5598CM07

· Tightening torque

### Rod cover (1)

| Item            | Size | kgf · m  | lbf · ft |
|-----------------|------|----------|----------|
| Boom cylinder   | M115 | 70 ± 7.0 | 506 ± 51 |
| Arm cylinder    | M95  | 70 ± 7.0 | 506 ± 51 |
| Bucket cylinder | M85  | 75 ± 7.5 | 542 ± 54 |
| Dozer cylinder  | M115 | 95 ± 9.5 | 690 ± 69 |

### Piston nut (2)

| Item            | Size | kgf · m    | lbf · ft |
|-----------------|------|------------|----------|
| Boom cylinder   | M45  | 75 ± 7.5   | 542 ± 54 |
| Arm cylinder    | M39  | 75 ± 7.5   | 542 ± 54 |
| Bucket cylinder | M36  | 75 ± 7.5   | 542 ± 54 |
| Dozer cylinder  | M45  | 113 ± 11.3 | 817 ± 82 |