

## GROUP 8 TURNING JOINT

### 1. REMOVAL AND INSTALL

#### 1) REMOVAL

- (1) Lower the work equipment to the ground and stop the engine.
- (2) Operate the control levers and pedals several times to release the remaining pressure in the hydraulic piping.
- (3) Loosen the breather slowly to release the pressure inside the hydraulic tank.

**▲ Escaping fluid under pressure can penetrate the skin causing serious injury.**

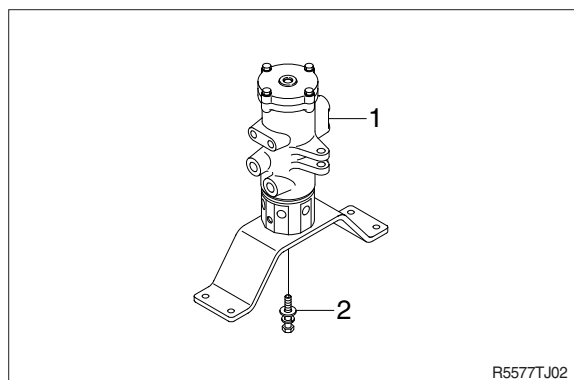
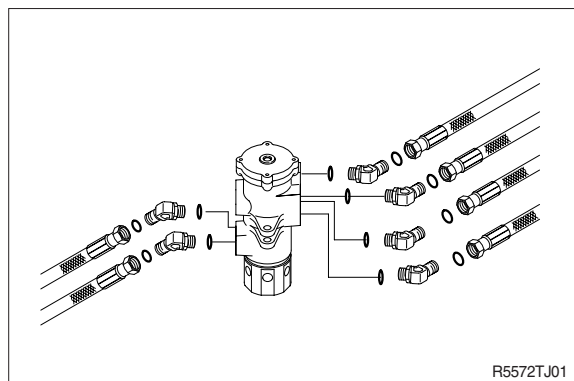
※ When pipes and hoses are disconnected, the oil inside the piping will flow out, so catch it in oil pan.

- (4) Disconnect all hoses.
- (5) Sling the turning joint assembly (1) and remove the mounting bolt (2).
  - Weight : 30 kg (70 lb)
  - Tightening torque :  $12.3 \pm 1.3 \text{ kgf} \cdot \text{m}$   
( $88.9 \pm 9.4 \text{ lbf} \cdot \text{ft}$ )

- (6) Remove the turning joint assembly.
  - ※ When removing the turning joint, check that all the hoses have been disconnected.

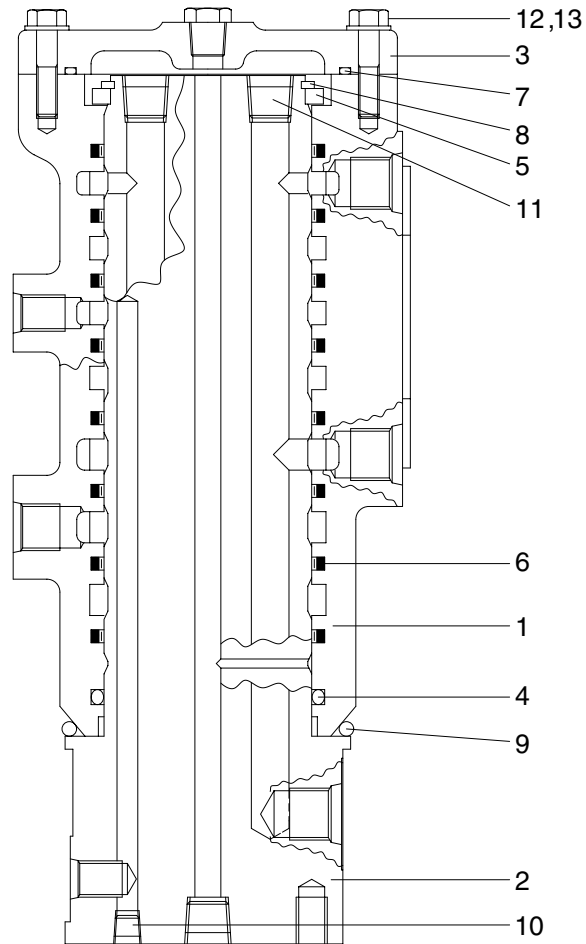
#### 2) INSTALL

- (1) Carry out installation in the reverse order to removal.
  - ※ Take care of turning joint direction.
  - ※ Assemble hoses to their original positions.
  - ※ Confirm the hydraulic oil level and check the hydraulic oil leak or not.



## 2. DISASSEMBLY AND ASSEMBLY

### 1) STRUCTURE



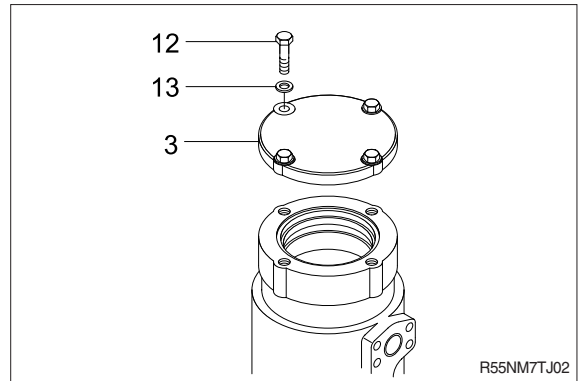
555K7TJ03

- |   |        |   |               |    |               |
|---|--------|---|---------------|----|---------------|
| 1 | Hub    | 6 | Slipper seal  | 10 | Plug          |
| 2 | Shaft  | 7 | O-ring        | 11 | Plug          |
| 3 | Cover  | 8 | Retainer ring | 12 | Hexagon bolt  |
| 4 | O-ring | 9 | O-ring        | 13 | Spring washer |
| 5 | Ring   |   |               |    |               |

## 2) DISASSEMBLY

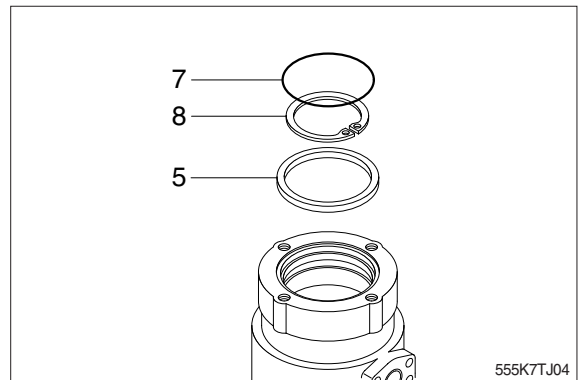
※ Before the disassembly, clean the turning joint.

- (1) Remove bolts (12), washer (13) and cover (3).



- (2) Remove O-ring (7).

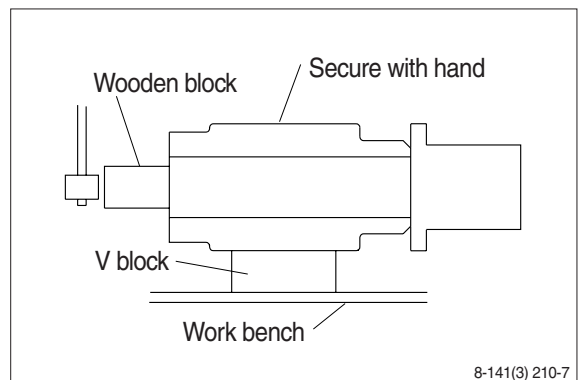
- (3) Remove retainer ring (8) and ring (5).



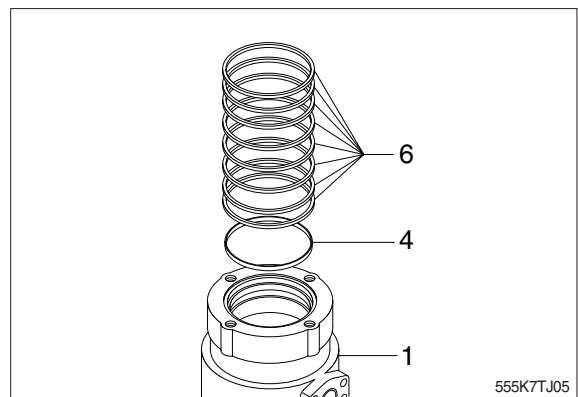
- (4) Place hub (1) on a V-block and by using a wood buffer at the shaft end, hit out shaft (2) to about 1/2 from the body with a hammer.

※ Take care not to damage the shaft (2) when remove hub (1) or rest it sideways.

※ Put a fitting mark on hub (1) and shaft (2).



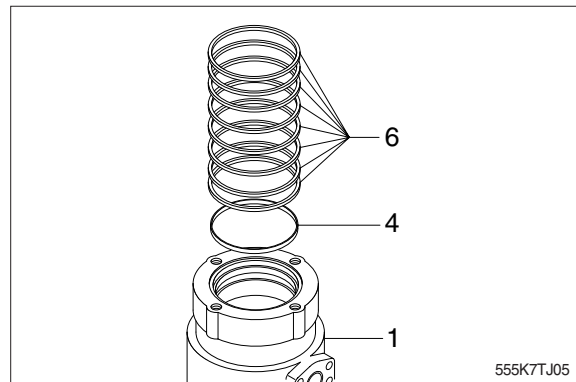
- (5) Remove eight slipper seals (6) and O-ring (4) from hub (1).



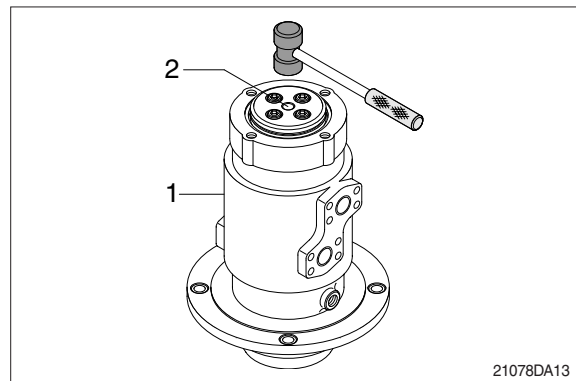
### 3) ASSEMBLY

- ※ Clean all parts.
- ※ As a general rule, replace oil seals and O-ring.
- ※ Coat the sliding surfaces of all parts with engine oil or grease before installing.

(1) Fix eight slipper seal (6) and O-ring (4) to hub (1).

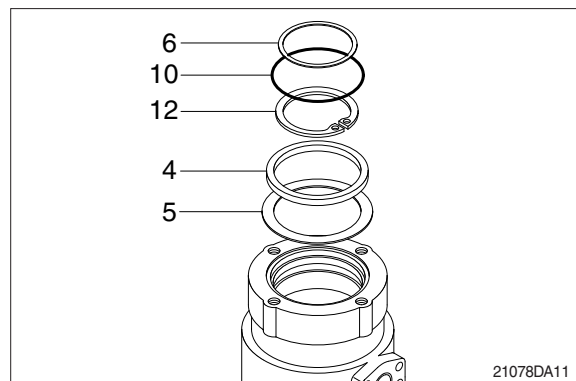


(2) Set shaft (2) on block, tap hub (1) with a plastic hammer to install.



(3) Ring (5) and retainer ring (8) to shaft (2).

(4) Fit O-ring (7) to hub (1).



(5) Install cover (3) to body (1) and tighten bolts (12) with washer (13).

