

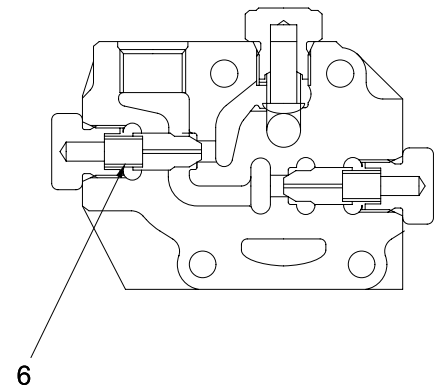
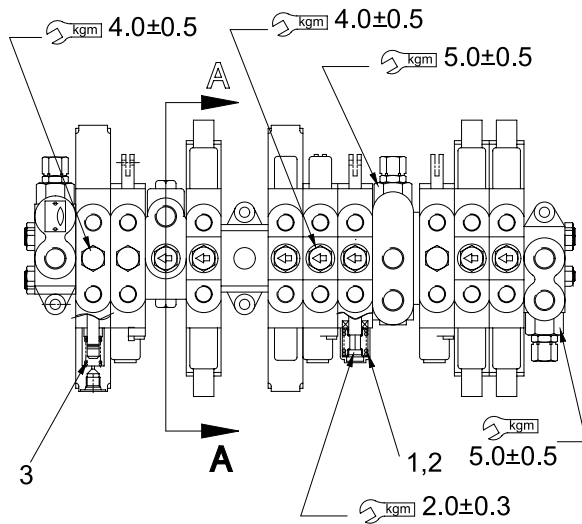
SECTION 6 MAINTENANCE STANDARD

Group 1 Major Components	6-1
Group 2 Track and Work Equipment	6-5

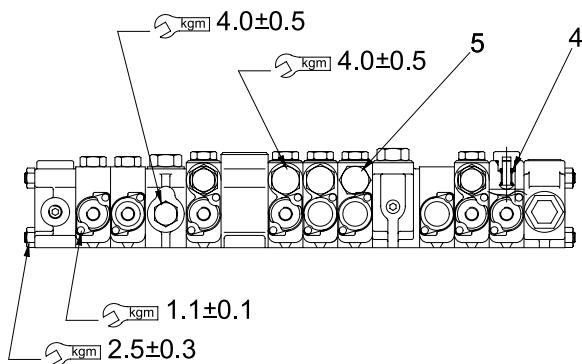
SECTION 6 MAINTENANCE STANDARD

GROUP 1 MAJOR COMPONENT

1. MAIN CONTROL VALVE



SECTION A-A

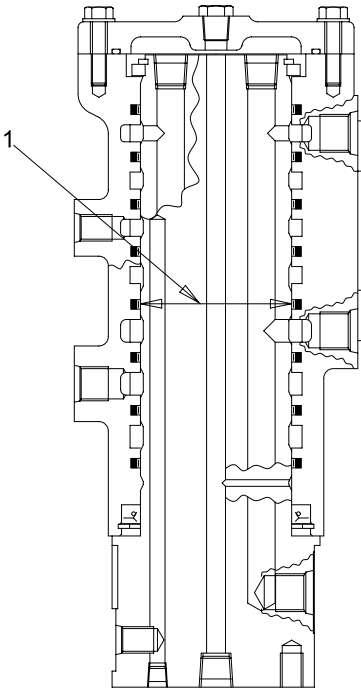


R55NM6MJ02

Unit : mm

No	Check item	Criteria					Remedy
		Standard size			Repair limit		
		Free length	Installed length	Installed load (kg)	Free length	Installed length	
1	Travel spool return spring	38.2	26.8	13.8	-	-	Replace
2	Spool return spring (Boom swing & dozer)	42	26.8	10	-	-	
3	Pilot spool return spring	35.2	34.2	3.3	-	-	
4	Check load valve spring	17	9.5	0.475	-	-	
5	Check anti-cavitation valve spring	18.3	15.4	0.1	-	-	
6	Check valve spring	17.5	13.5	0.3	-	-	

2. TURNING JOINT

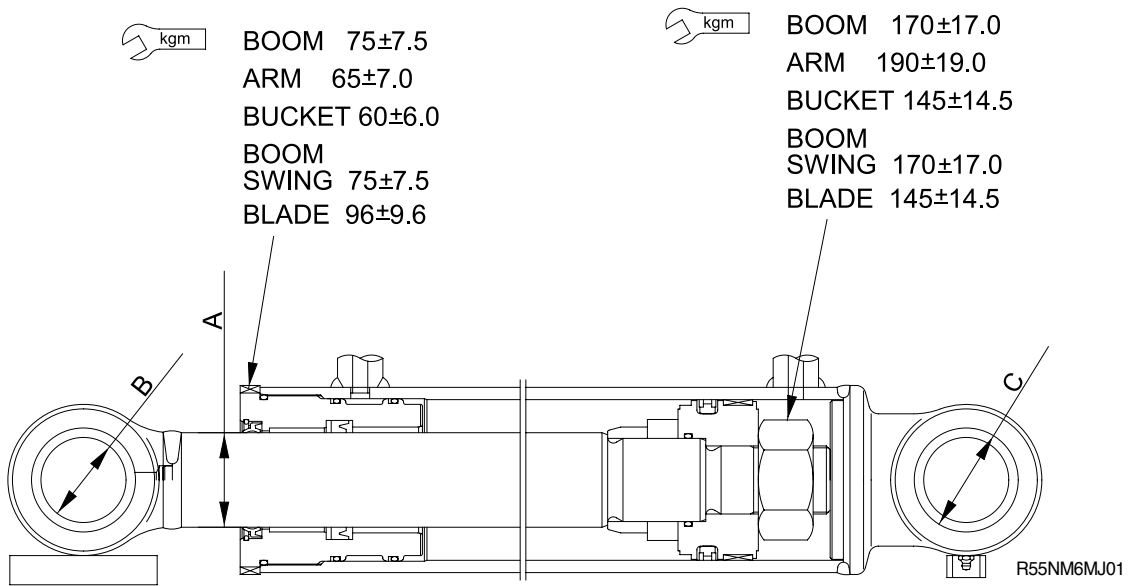


R55NM6MJ03

Unit : mm

No	Check item	Criteria			Remedy
		Standard size	Standard clearance	Clearance limit	
1	Clearance between hub and shaft	80	0.056 ~ 0.105	0.111	Replace

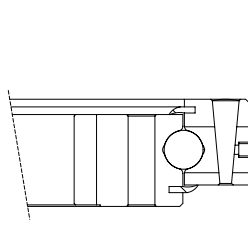
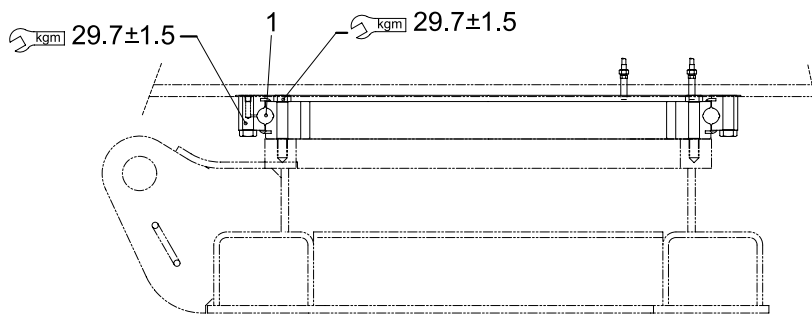
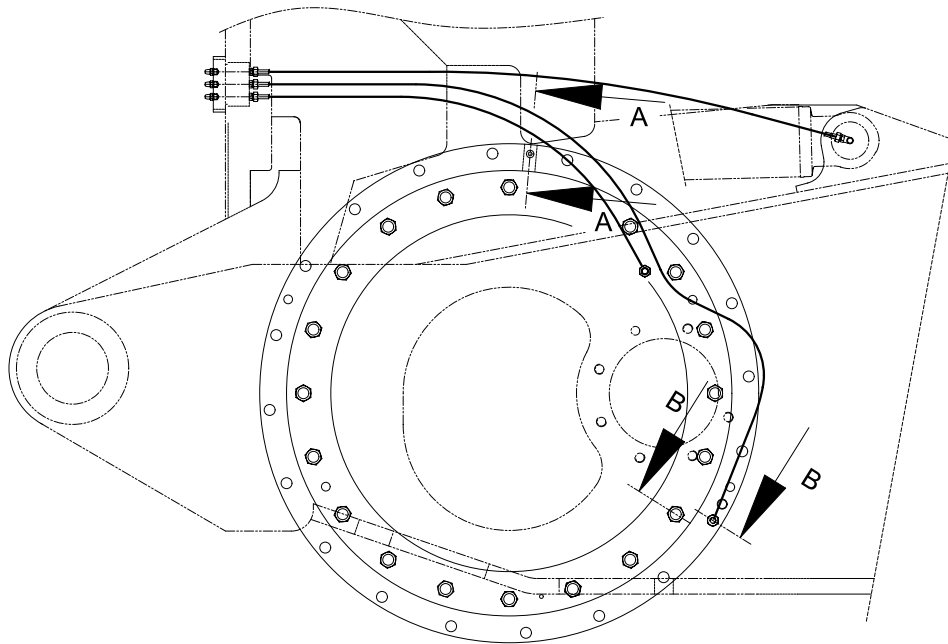
3. HYDRAULIC CYLINDER



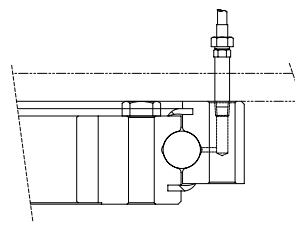
Unit : mm

No	Check item	Criteria					Remedy	
		Cylinder	Standard size	Tolerance		Standard clearance		Clearance limit
Shaft	Hole							
A	Clearance between piston rod and bushing	Boom	55	-0.030 -0.070	+0.110 0	0.025 ~ 0.174	0.567	Replace bushing
		Arm	50	-0.025 -0.064	+0.110 0	0.025 ~ 0.174	0.551	
		Bucket	50	-0.025 -0.064	+0.110 0	0.025 ~ 0.174	0.539	
		Boom swing	50	-0.025 -0.064	+0.110 0	0.025 ~ 0.174	0.551	
		Blade	50	-0.025 -0.064	+0.110 0	0.025 ~ 0.174	0.551	
B	Clearance between piston rod mounting pin and bushing	Boom	50	-0.147 -0.209	+0.142 +0.080	0.227 ~ 0.351	1.0	Replace bushing
		Arm	45	-0.025 -0.087	+0.142 +0.080	0.105 ~ 0.229	1.0	
		Bucket	45	-0.170 -0.230	+0.142 +0.080	0.250 ~ 0.372	1.0	
		Boom swing	50	-0.025 -0.064	+0.142 +0.080	0.105 ~ 0.206	1.0	
		Blade	55	-0.030 -0.076	+0.174 +0.100	0.130 ~ 0.250	1.0	
C	Clearance between cylinder bottom mounting pin and bushing	Boom	50	-0.025 -0.087	+0.142 +0.080	0.105 ~ 0.229	1.0	Replace bushing
		Arm	45	-0.025 -0.087	+0.142 +0.080	0.105 ~ 0.229	1.0	
		Bucket	45	-0.025 -0.064	+0.142 +0.080	0.105 ~ 0.206	1.0	
		Boom swing	50	-0.025 -0.064	+0.142 +0.080	0.105 ~ 0.206	1.0	
		Blade	55	-0.190 -0.264	+0.174 +0.100	0.290 ~ 0.438	1.0	

4. SWING CIRCLE



SECTION A-A



SECTION B-B

R55NM6MJ04

Unit : mm

No	Check item	Criteria		Remedy
		Standard clearance	Clearance limit	
1	Clearance of bearing	0.05 ~ 0.2	0.4	Replace