

## SECTION 5 TROUBLE SHOOTING

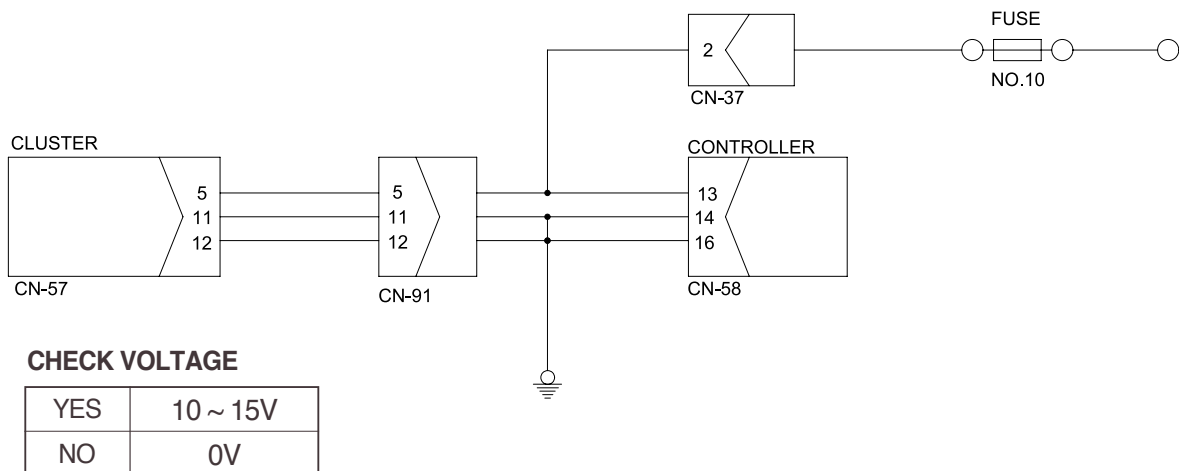
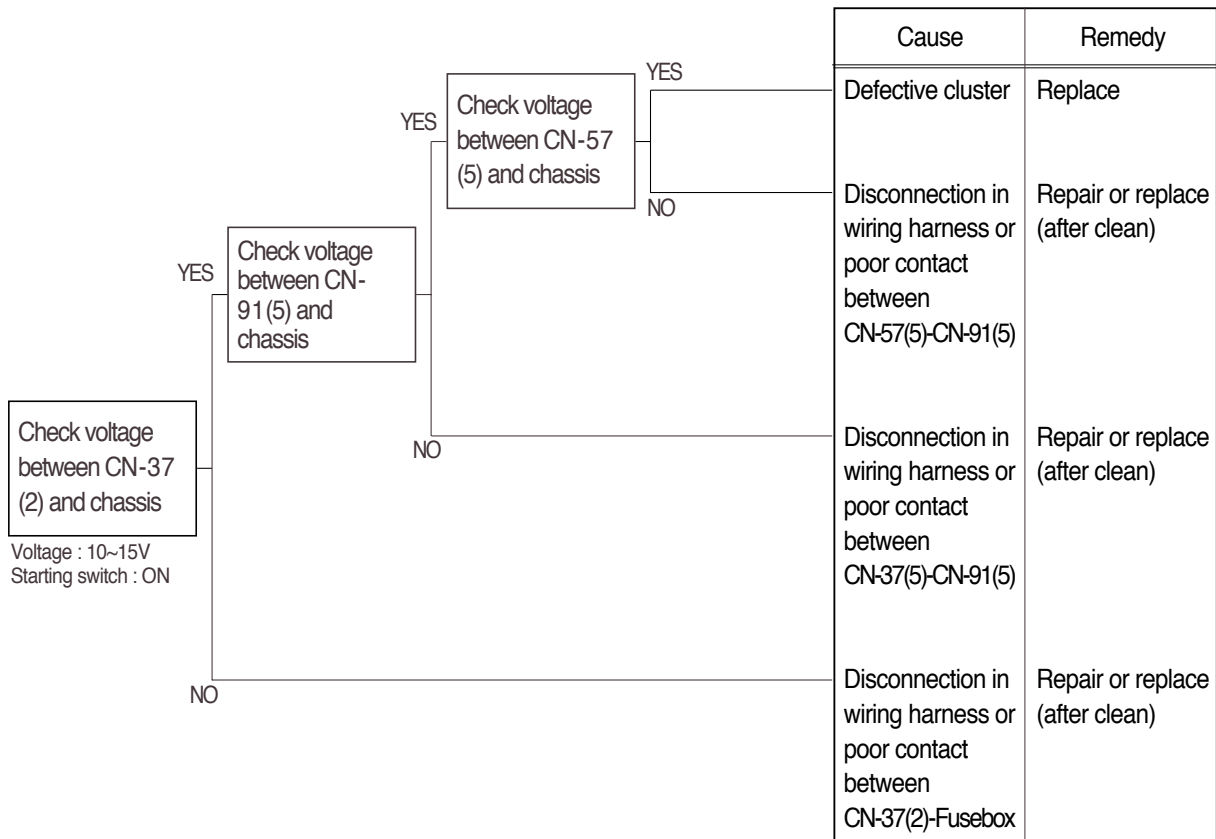
Group 1 Electrical System .....	5-1
Group 2 Hydraulic Components .....	5-22

# SECTION 5 TROUBLESHOOTING

## GROUP 1 ELECTRICAL SYSTEM

### WHEN STARTING SWITCH IS TURNED ON, MONITOR PANEL DISPLAY DOES NOT APPEAR

- Before disconnecting the connector, always turn the starting switch OFF.
- Before carrying out below procedure, check all the related connectors are properly inserted and the fuse No.10 (Panel gauge) is not blown out.
- After checking, connect the disconnected connectors again immediately unless otherwise specified.



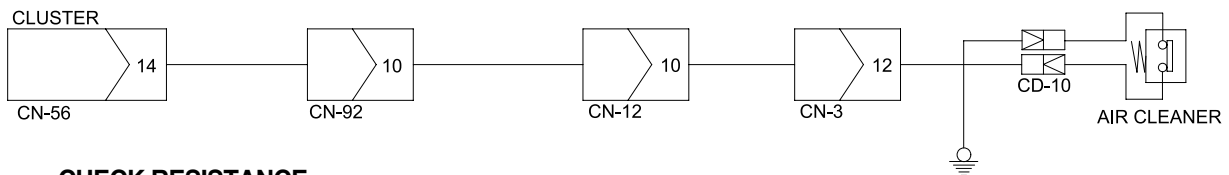
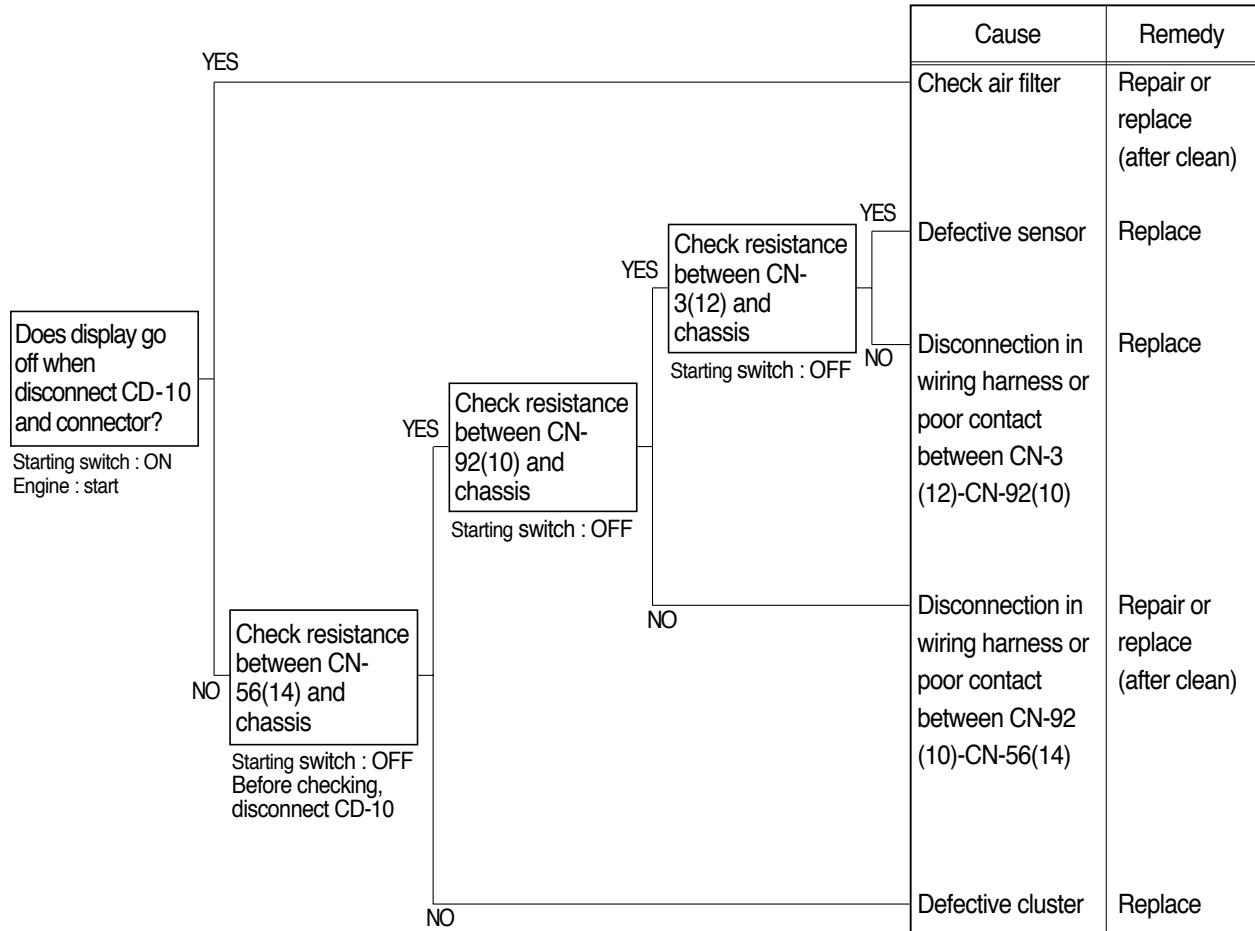
R55NM5TS01





## WHEN AIR CLEANER LAMP LIGHTS UP(Engine is started)

- Before disconnecting the connector, always turn the starting switch OFF.
- Before carrying out below procedure, check all the related connectors are properly inserted.
- After checking, connect the disconnected connectors again immediately unless otherwise specified.



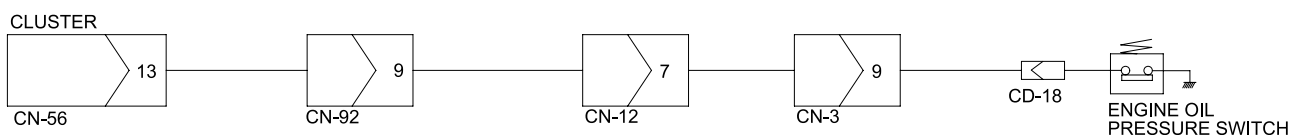
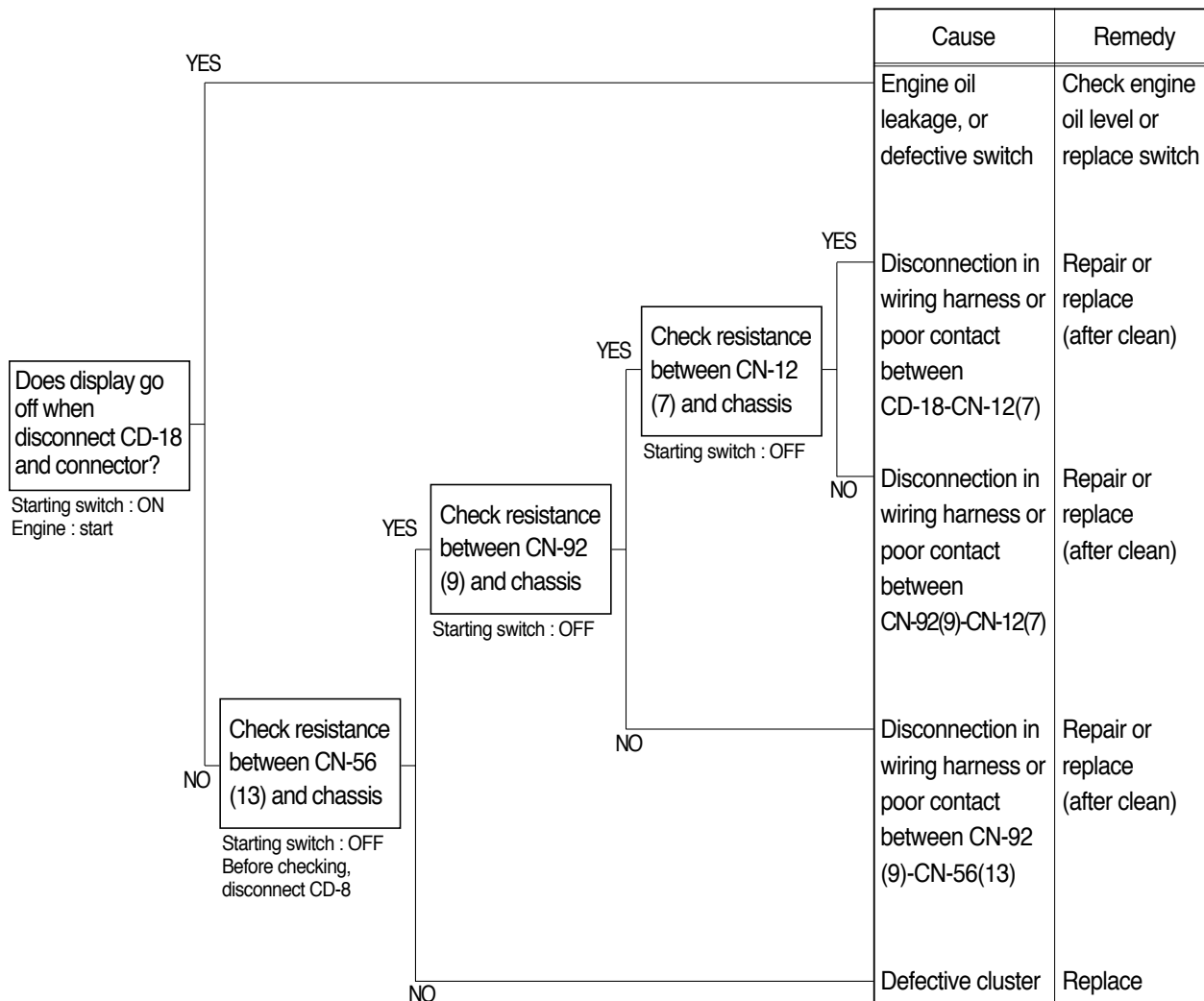
### CHECK RESISTANCE

YES	MAX 1
NO	MIN 1M

R55NM5TS03

## 🔧 WHEN ENGINE OIL PRESSURE LAMP LIGHTS UP(Engine is started)

- Before disconnecting the connector, always turn the starting switch OFF.
- Before carrying out below procedure, check all the related connectors are properly inserted.
- After checking, connect the disconnected connectors again immediately unless otherwise specified.



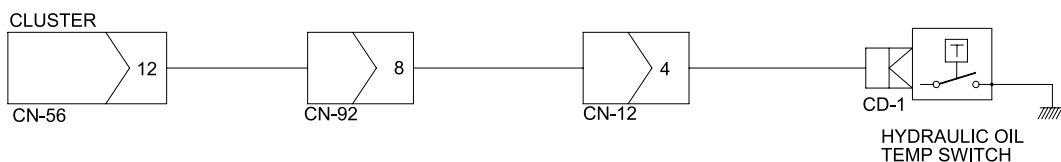
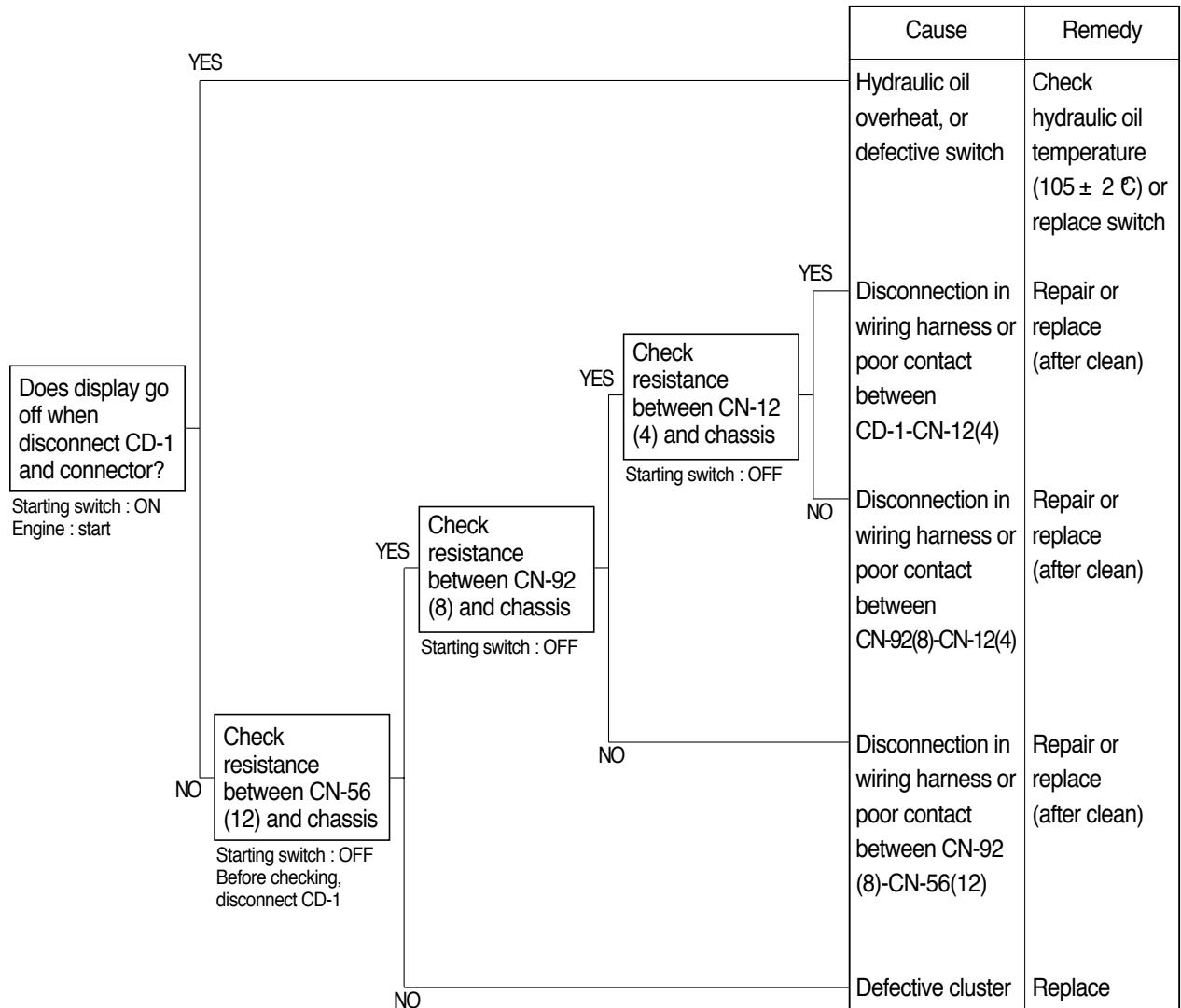
### CHECK RESISTANCE

YES	MAX 1
NO	MIN 1M

R55NM5TS04

## WHEN HYDRAULIC TEMPERATURE LAMP LIGHTS UP(Engine is started)

- Before disconnecting the connector, always turn the starting switch OFF.
- Before carrying out below procedure, check all the related connectors are properly inserted.
- After checking, connect the disconnected connectors again immediately unless otherwise specified.



### CHECK RESISTANCE

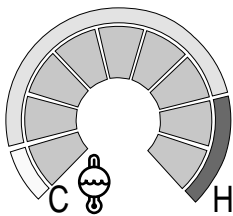
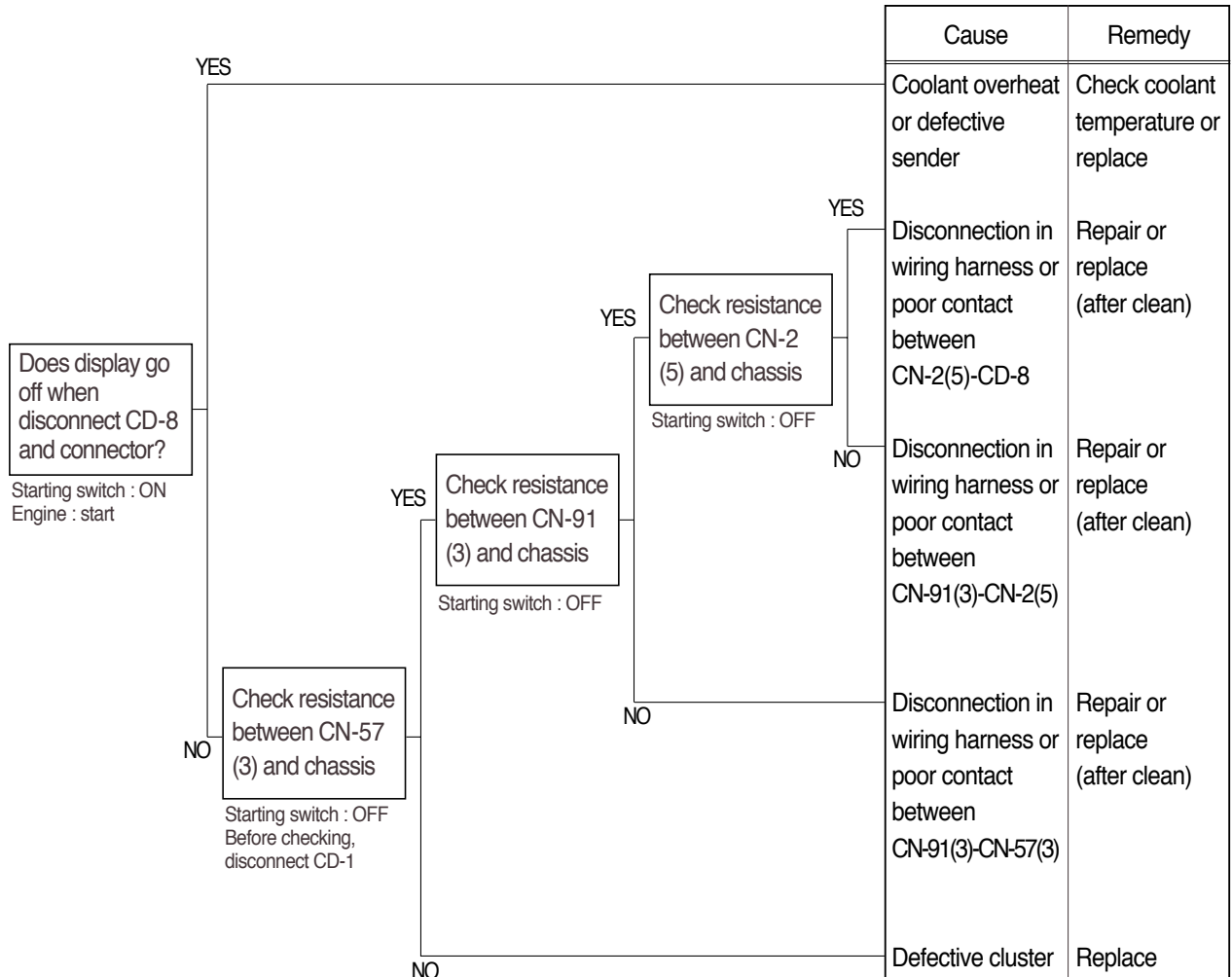
YES	MAX 1
NO	MIN 1M

R55NM5TS05

## WHEN COOLANT TEMPERATURE GAUGE DOES NOT OPERATE

(Check coolant temperature lamp ON/OFF)

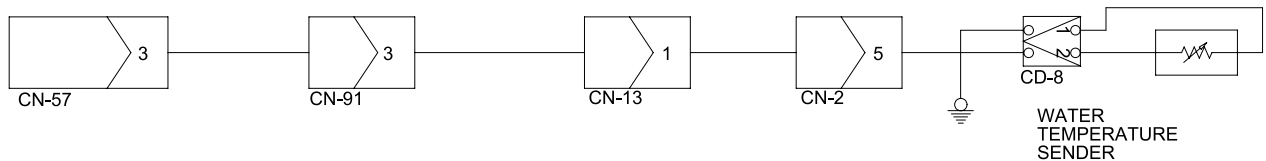
- Before disconnecting the connector, always turn the starting switch OFF.
- Before carrying out below procedure, check all the related connectors are properly inserted.
- After checking, connect the disconnected connectors again immediately unless otherwise specified.



### CHECK TABLE

Item	Temperature			
	(50 ℃)	(80 ℃)	(100 ℃)	(120 ℃)
Unit resistance( )	826	310	176	112
Tolerance	-	± 12	± 9	± 1.2

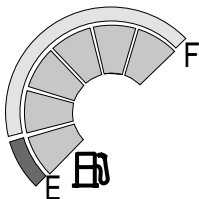
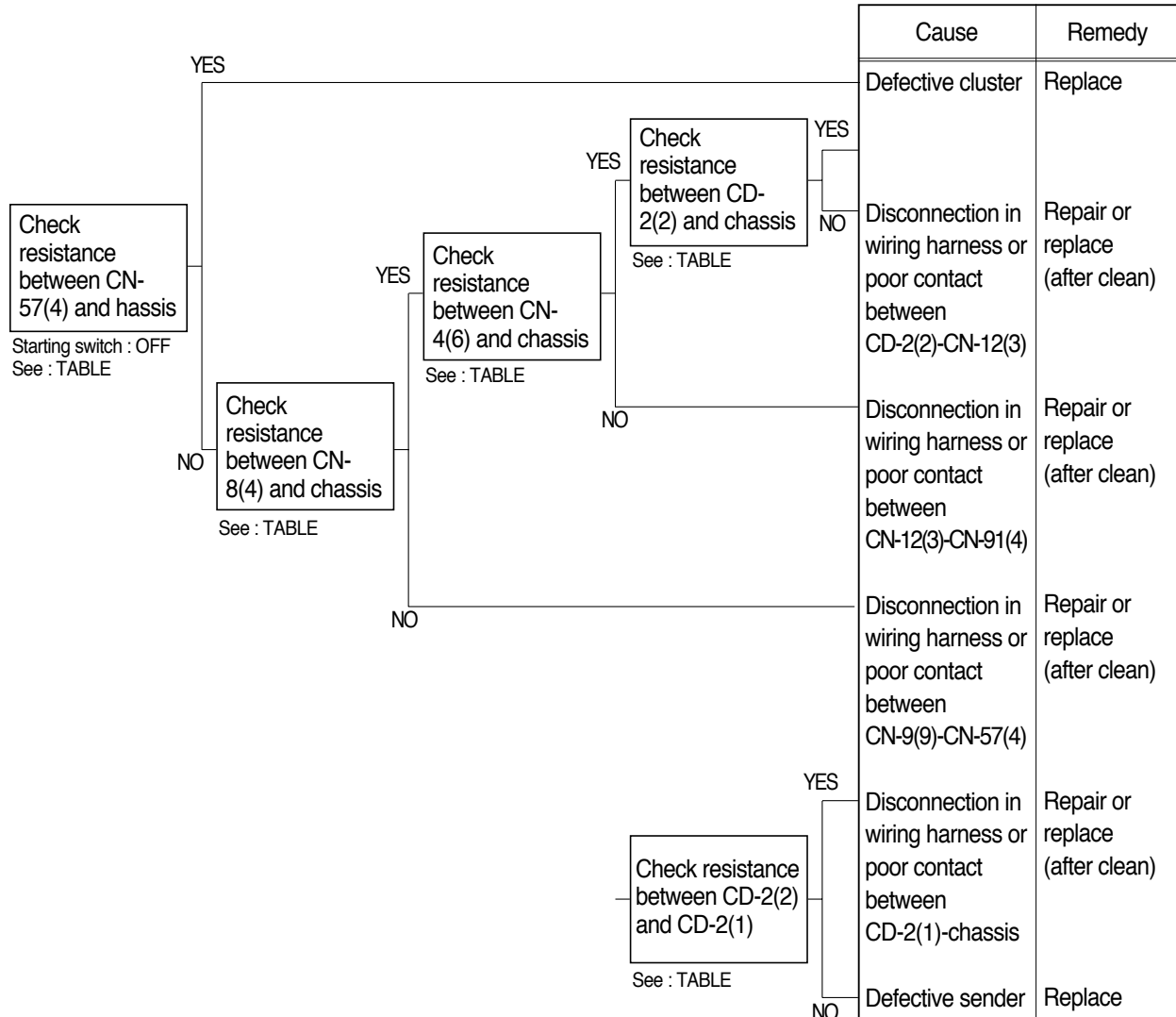
### CLUSTER



R55NM5TS06

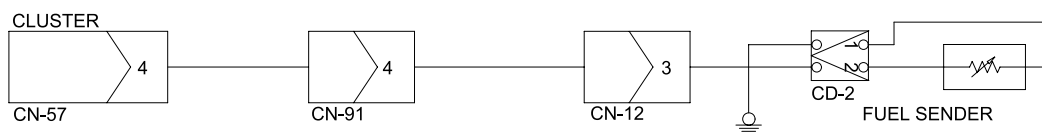
## WHEN FUEL GAUGE DOES NOT OPERATE(Check warning lamp ON/OFF)

- Before disconnecting the connector, always turn the starting switch OFF.
- Before carrying out below procedure, check all the related connectors are properly inserted.
- After checking, connect the disconnected connectors again immediately unless otherwise specified.



**CHECK TABLE**

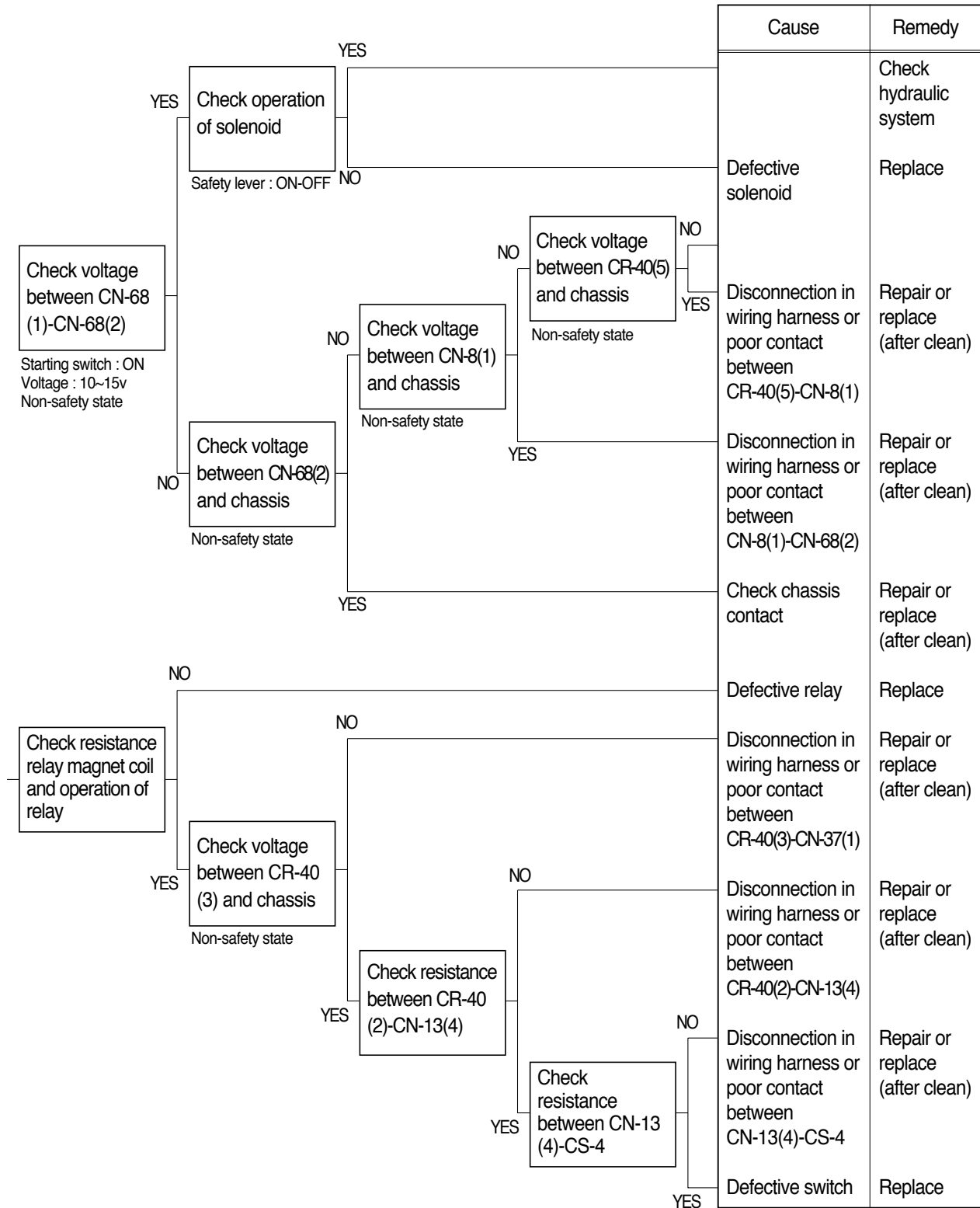
Level \ Item	Empty	2/6	3/6	4/6	5/6	Full
Unit resistance( )	600	500	100	200	200	100
Tolerance	± 5%	± 5%	± 5%	± 5%	± 5%	± 5%

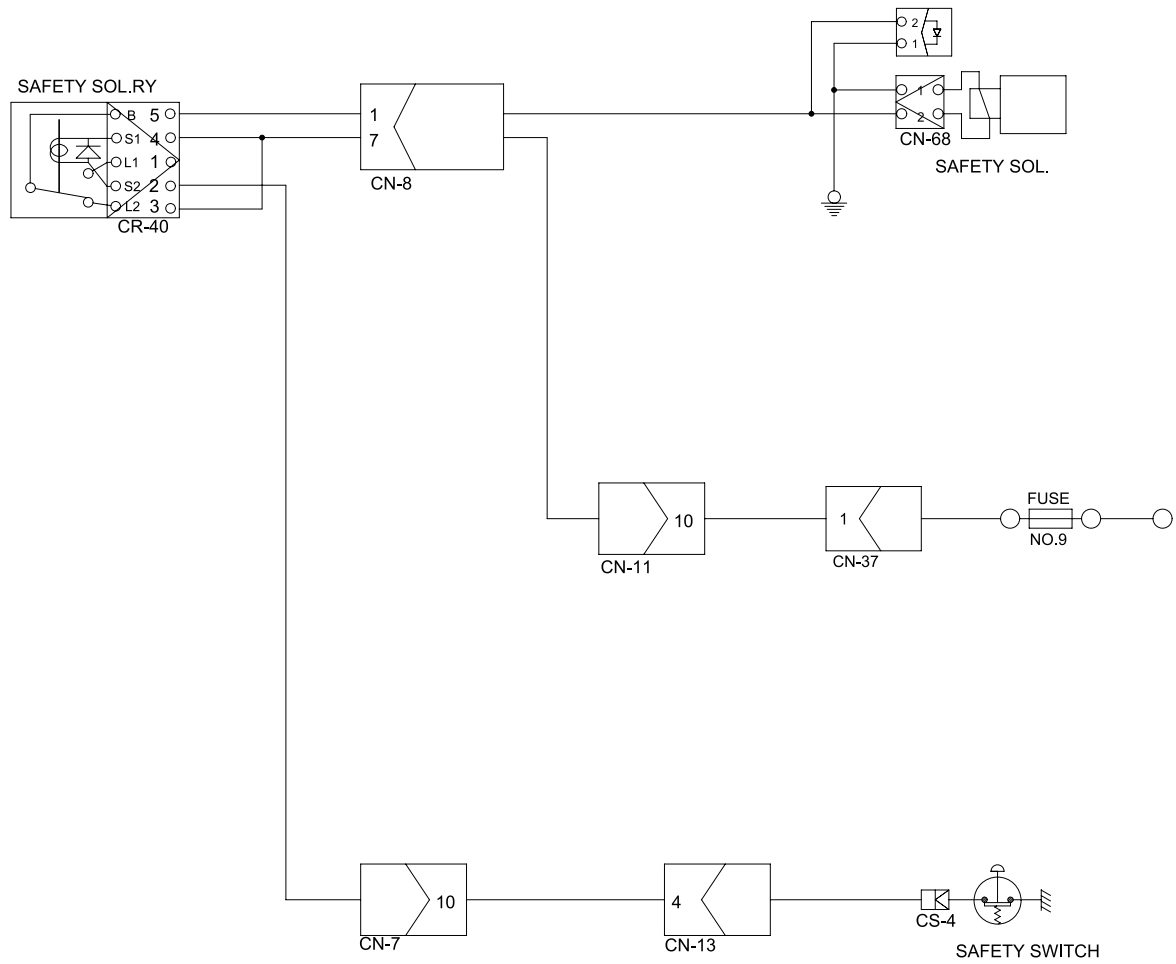


R55NM5TS07

## WHEN SAFETY SOLENOID DOES NOT OPERATE

- Before disconnecting the connector, always turn the starting switch OFF.
- Before carrying out below procedure, check all the related connectors are properly inserted and the fuse No.9 is not blown out.
- After checking, connect the disconnected connectors again immediately unless otherwise specified.

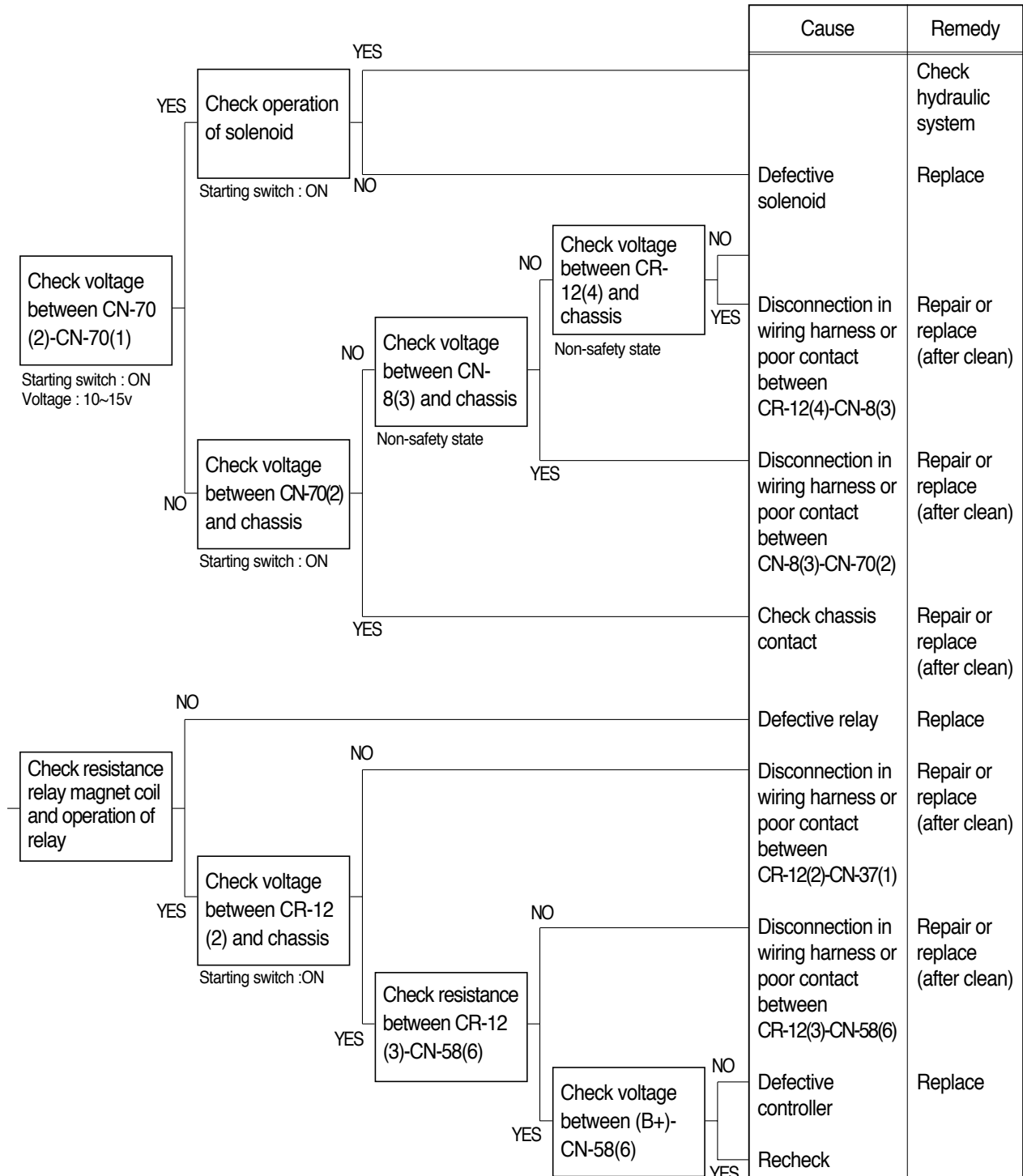


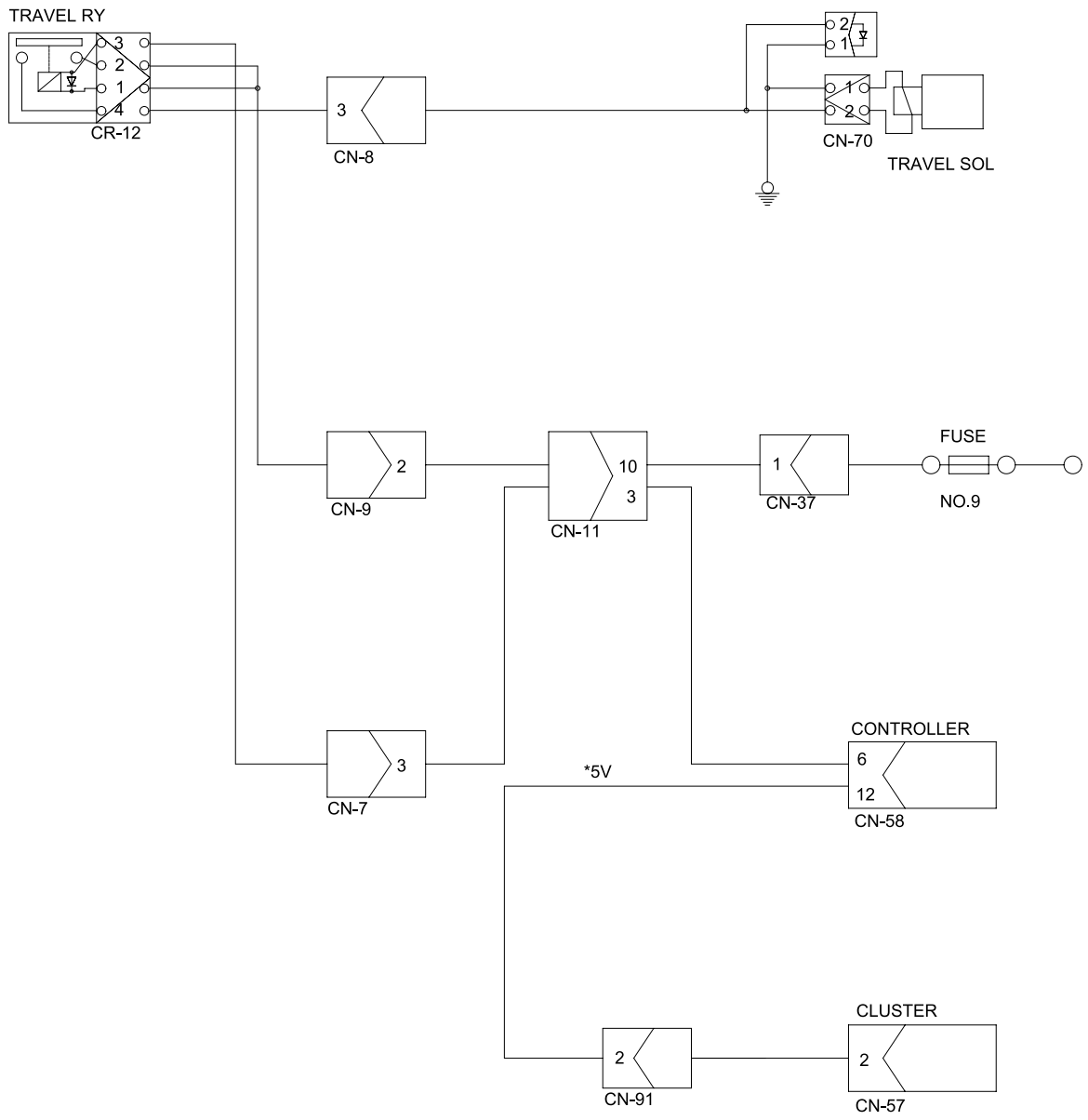


R55NM5TS08

## WHEN TRAVEL SPEED 1, 2 DOES NOT OPERATE

- Before disconnecting the connector, always turn the starting switch OFF.
- Before carrying out below procedure, check all the related connectors are properly inserted and the fuse No.9 is not blown out.
- After checking, connect the disconnected connectors again immediately unless otherwise specified.  
(\* Voltage of CN-57(2) ~ CN-58(12) and chassis : 5V, if not defective cluster)

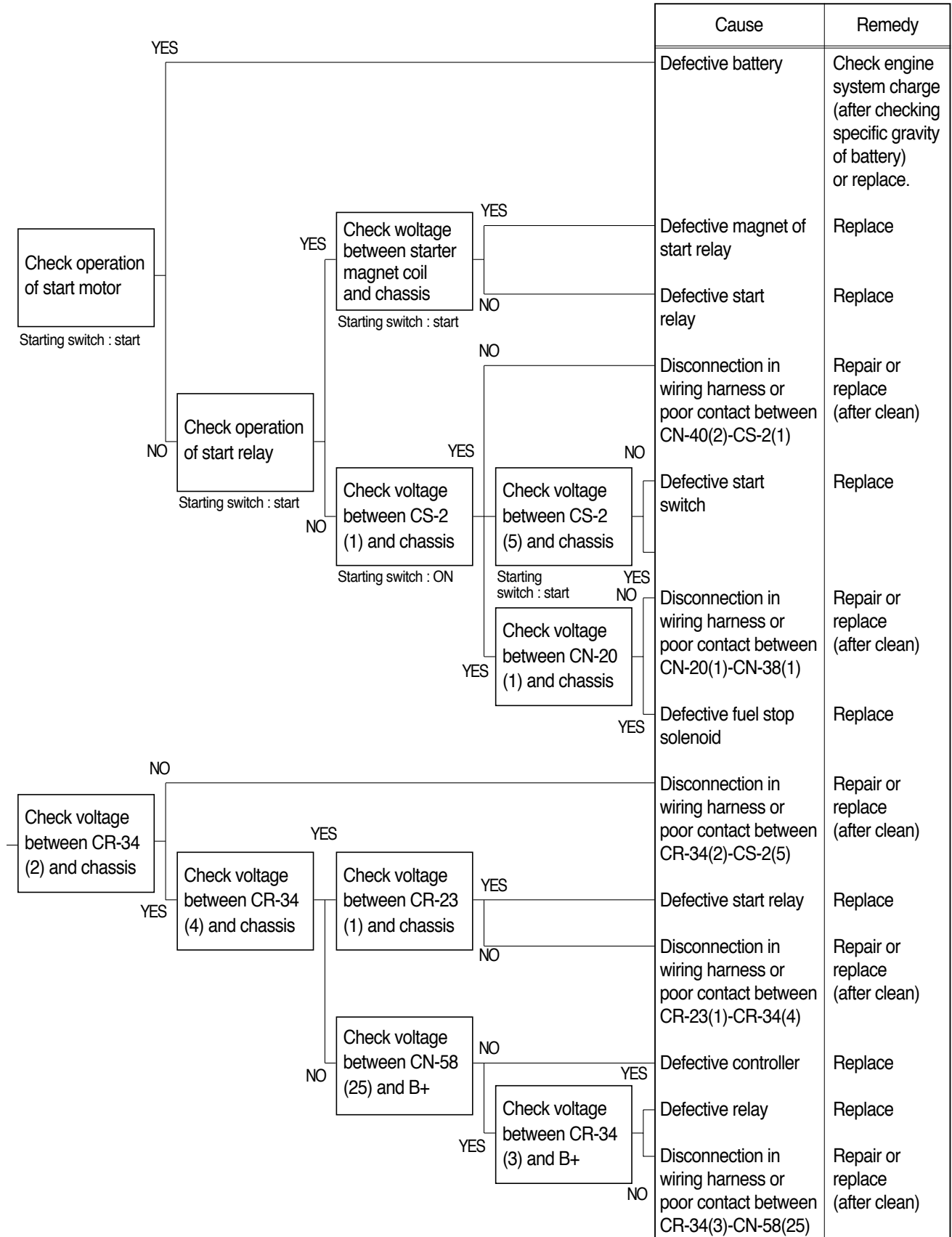


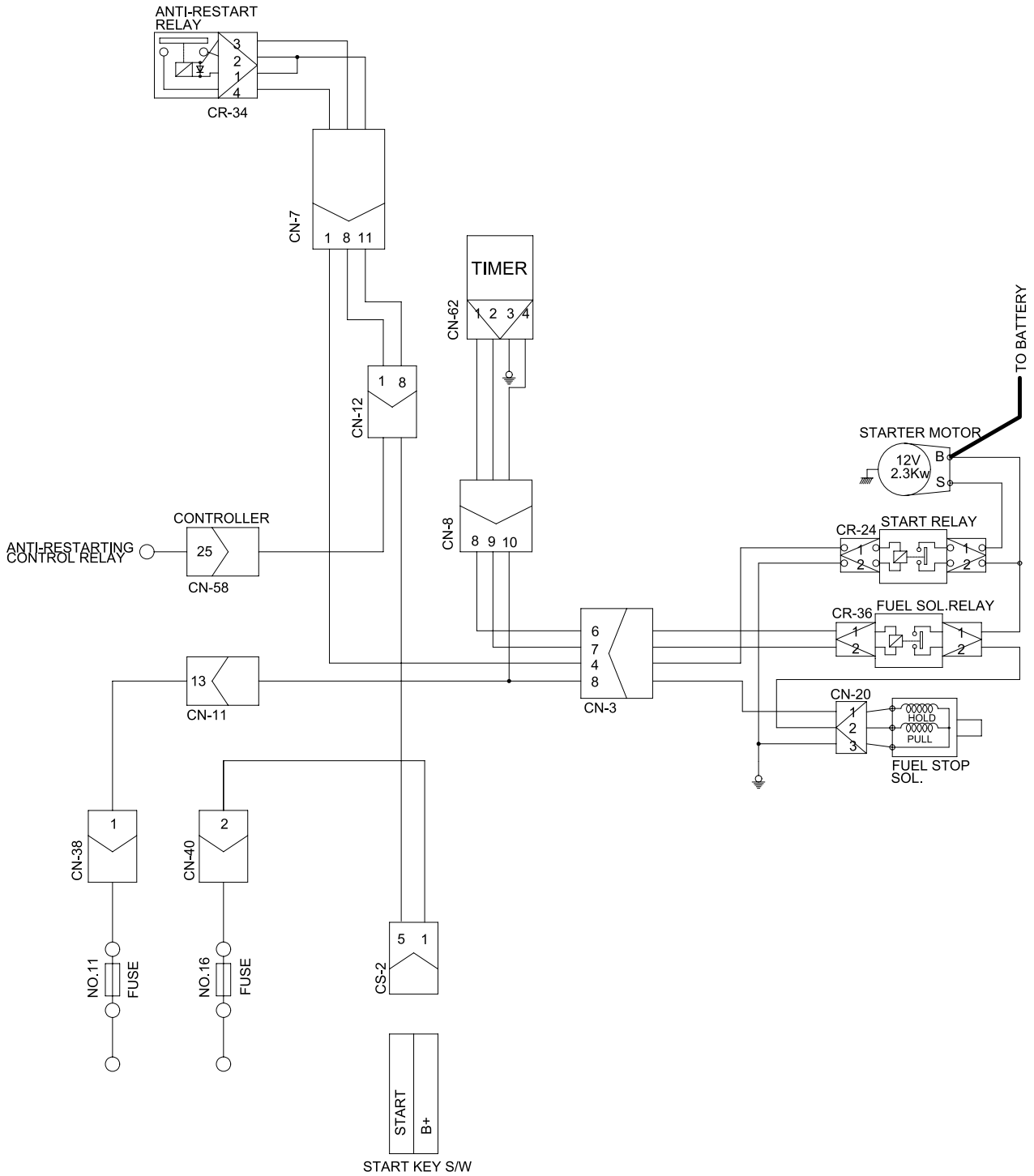


R55NM5TS09

## WHEN ENGINE DOES NOT START

- Before disconnecting the connector, always turn the starting switch OFF.
- Before carrying out below procedure, check all the related connectors are properly inserted and the fuse No.11 and No.16 are not blown out.
- After checking, connect the disconnected connectors again immediately unless otherwise specified.

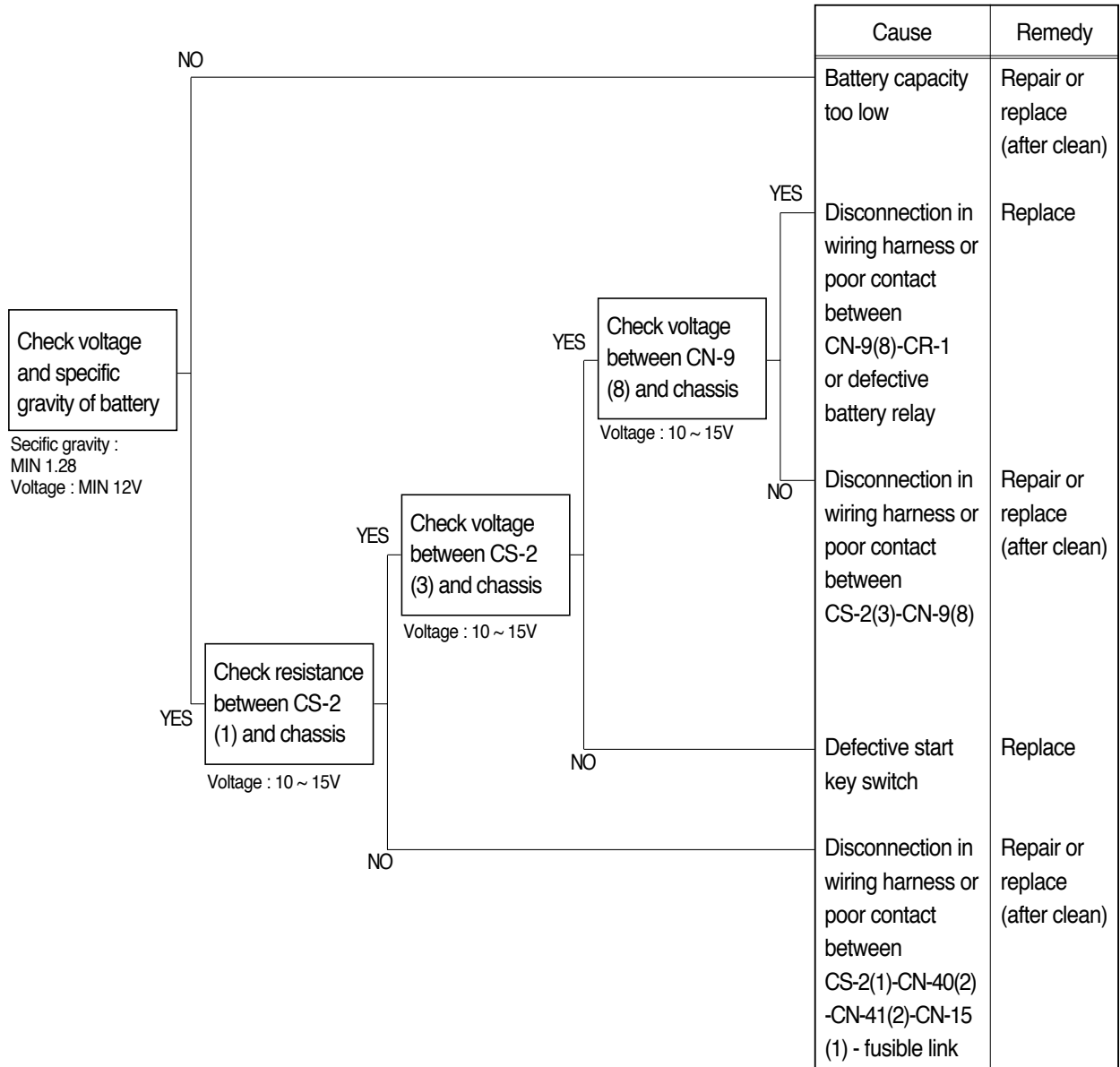


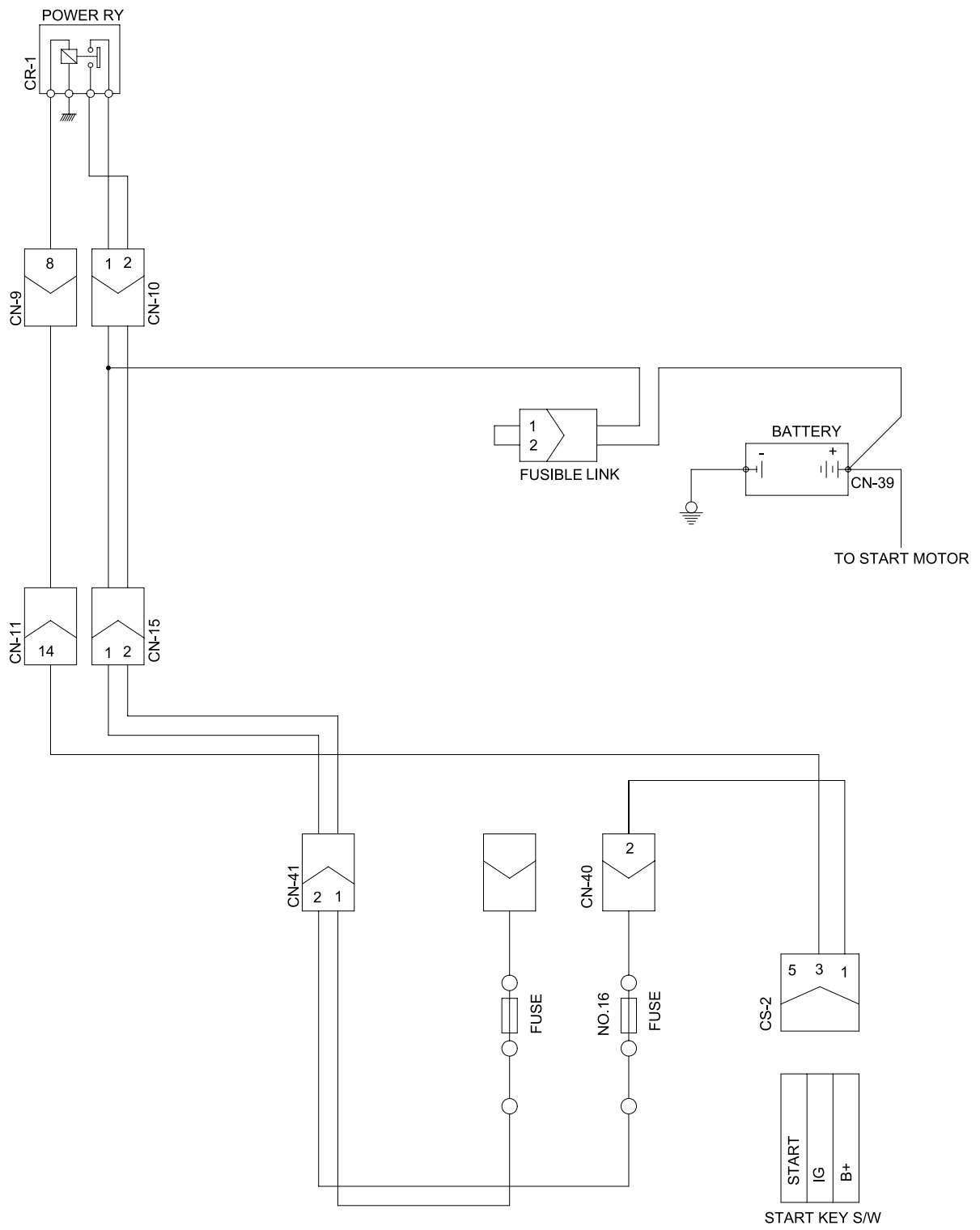


R55NM5TS10

## WHEN STARTING SWITCH DOES NOT OPERATE

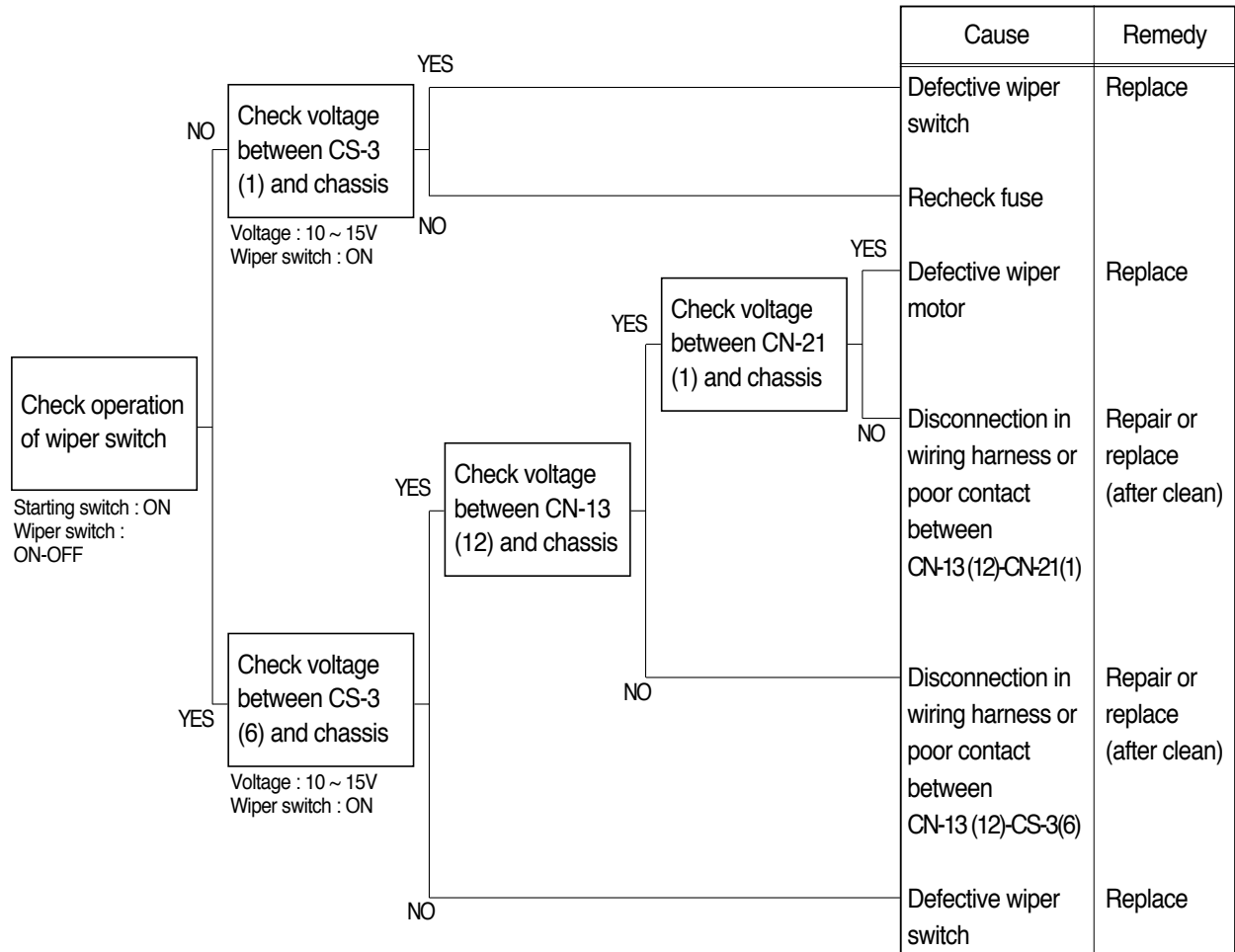
- Before disconnecting the connector, always turn the starting switch OFF.
- Before carrying out below procedure, check all the related connectors are properly inserted and the fusible link and the fuse No.16 are not blown out.
- After checking, connect the disconnected connectors again immediately unless otherwise specified.

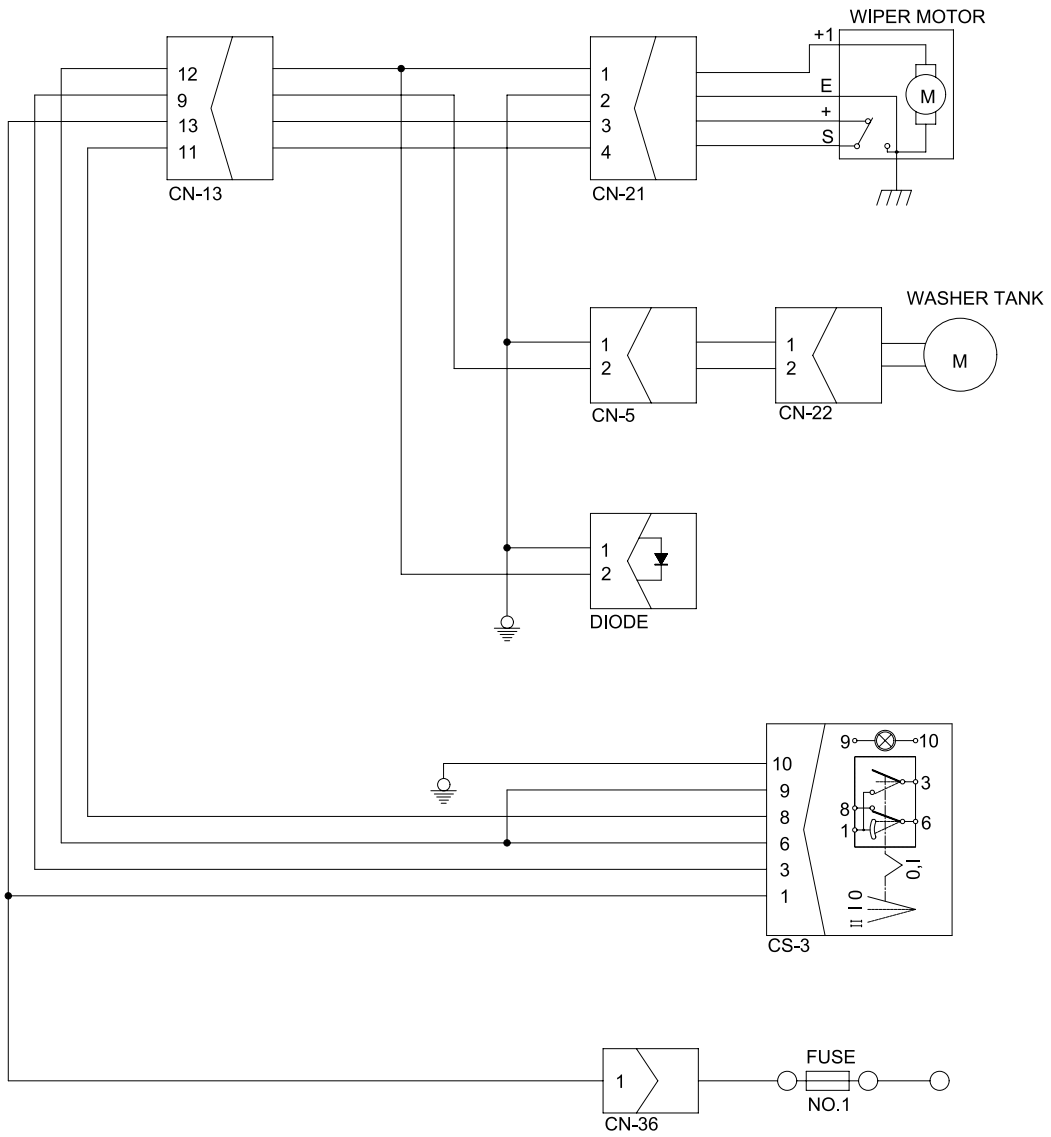




## WHEN STARTING SWITCH IS TURNED ON, WIPER MOTOR DOES NOT OPERATE

- Before disconnecting the connector, always turn the starting switch OFF.
- Before carrying out below procedure, check all the related connectors are properly inserted and the fuse No.1 is not blown out.
- After checking, connect the disconnected connectors again immediately unless otherwise specified.

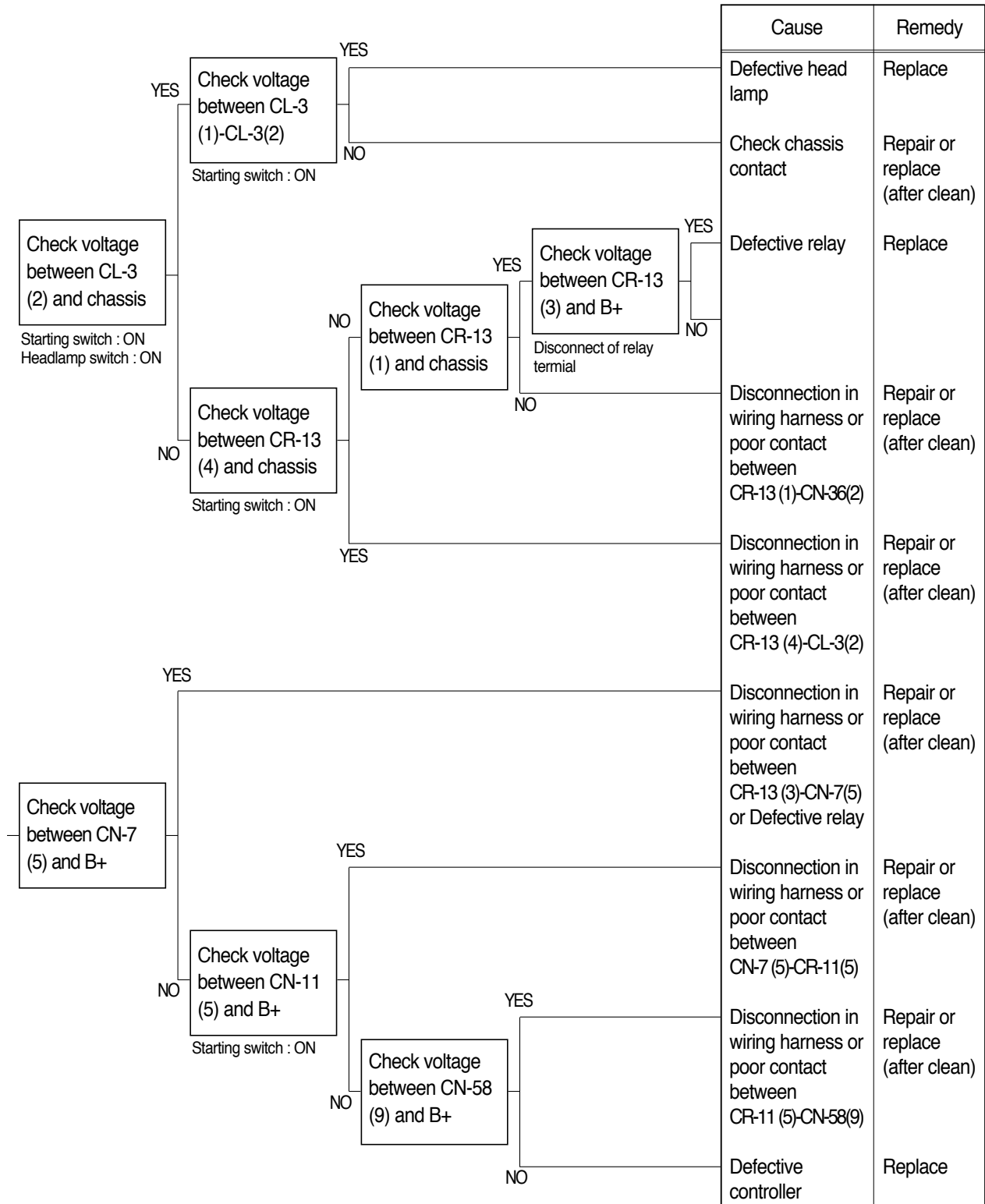


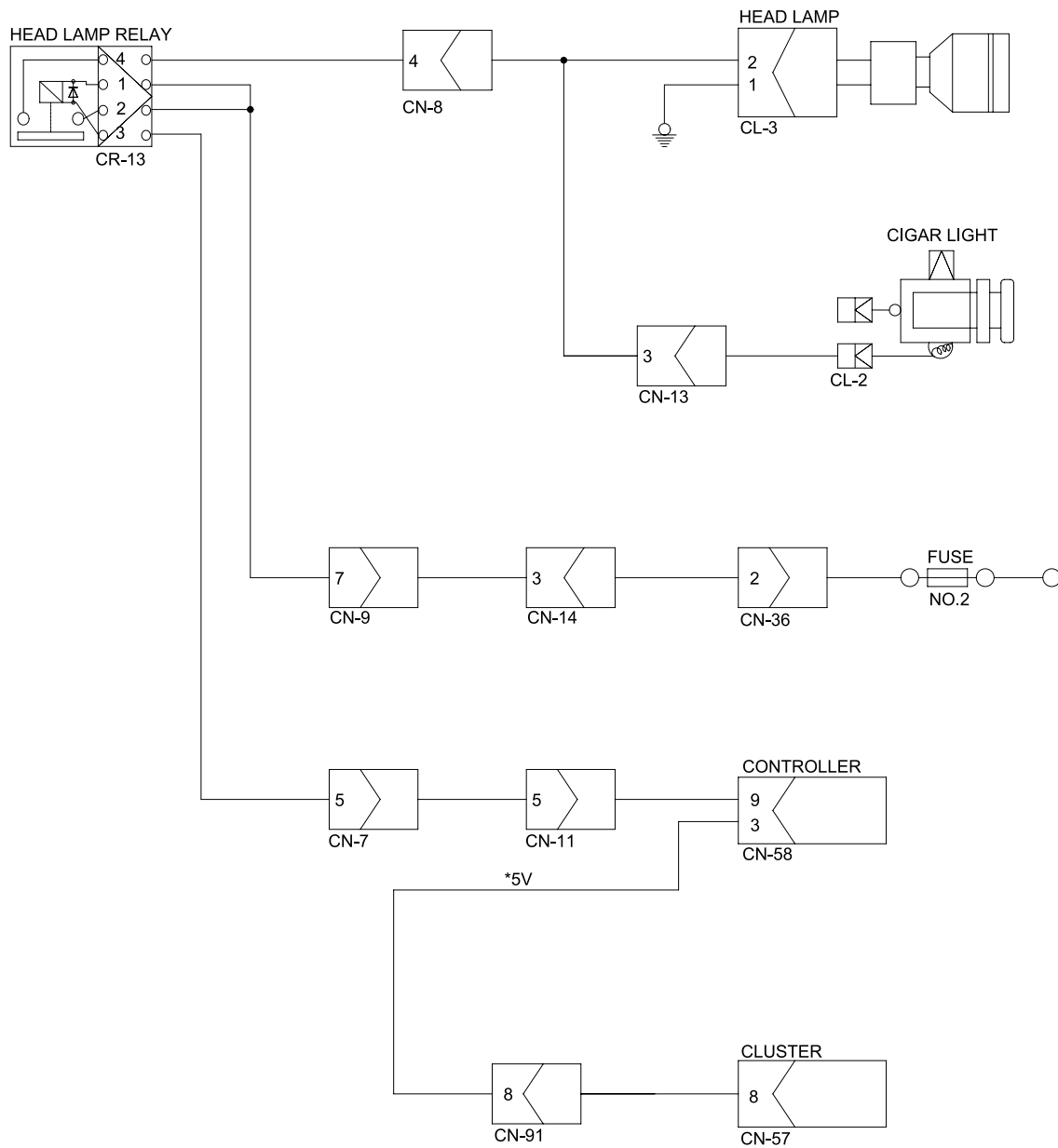


R55NM5TS12

## WHEN STARTING SWITCH IS TURNED ON, HEAD LAMP DOES NOT LIGHT UP

- Before disconnecting the connector, always turn the starting switch OFF.
- Before carrying out below procedure, check all the related connectors are properly inserted and the fuse No.2 is not blown out.
- After checking, connect the disconnected connectors again immediately unless otherwise specified.  
(\* Voltage of CN-57(8) ~ CN-58(3) and chassis : 5V, if not defective cluster)

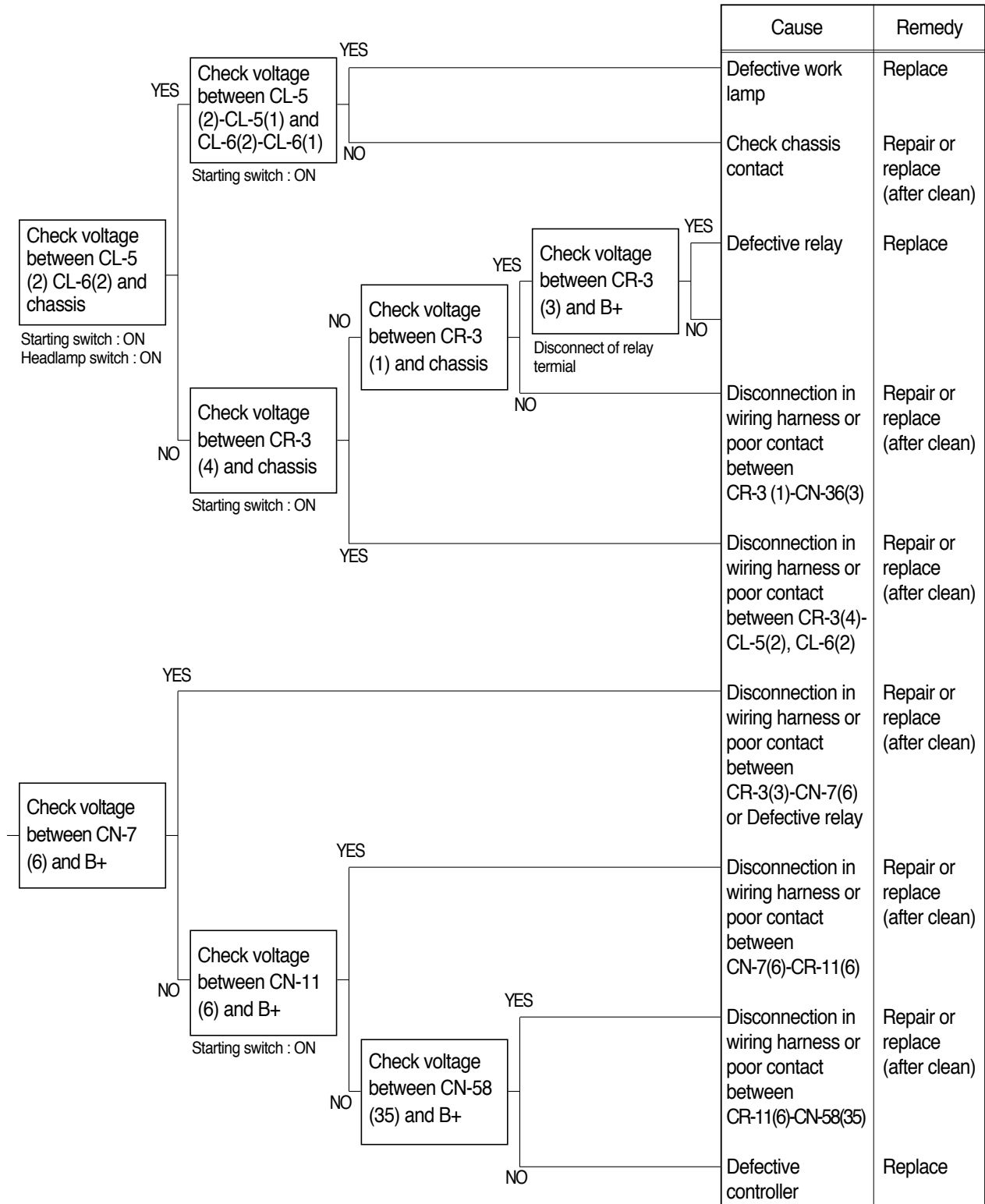


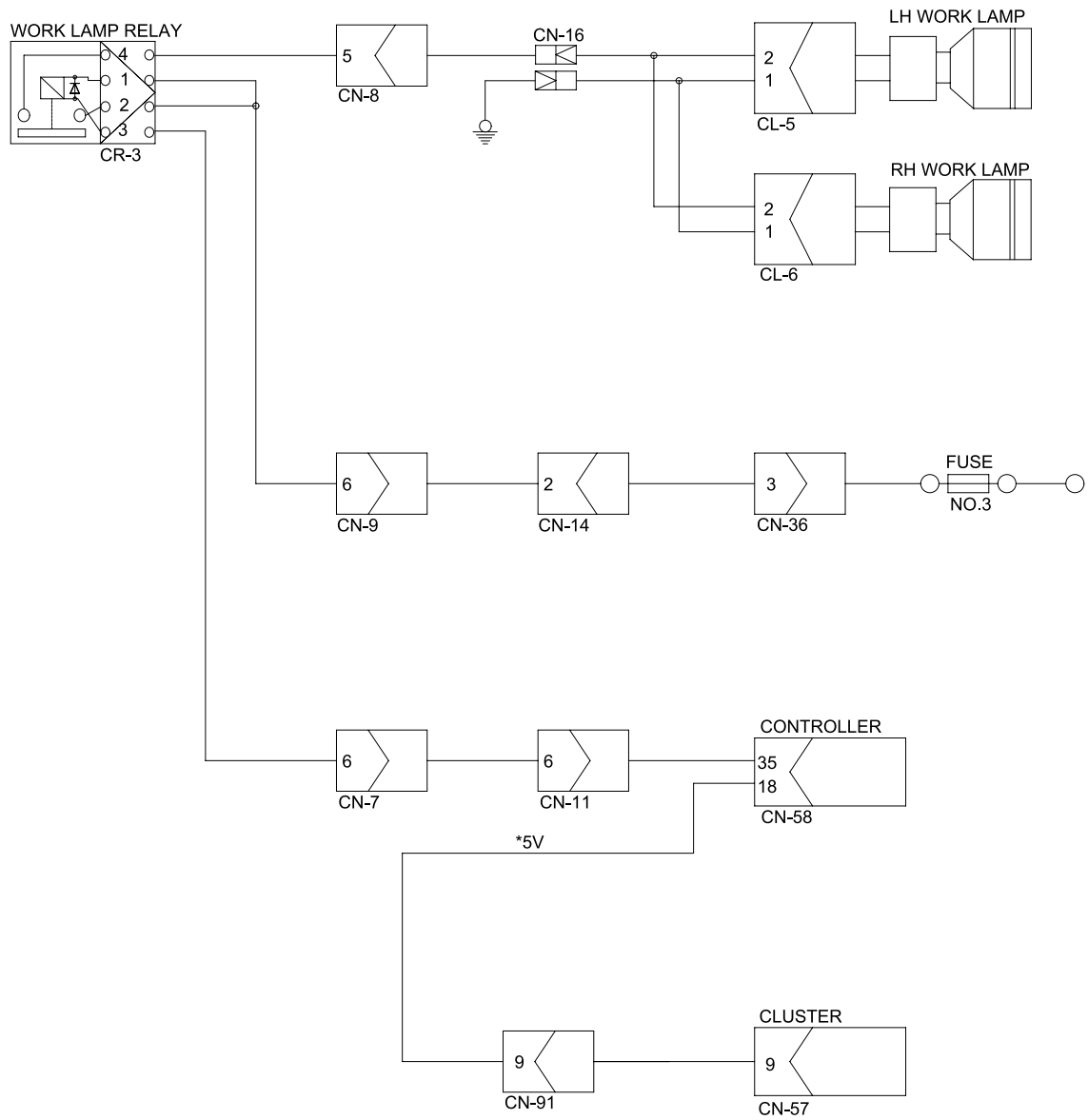


R55NM5TS13

## WHEN STARTING SWITCH IS TURNED ON, WORK LAMP DOES NOT LIGHT UP

- Before disconnecting the connector, always turn the starting switch OFF.
- Before carrying out below procedure, check all the related connectors are properly inserted and the fuse No.3 is not blown out.
- After checking, connect the disconnected connectors again immediately unless otherwise specified.  
(\* Voltage of CN-57(9) ~ CN-58(18) and chassis : 5V, if not defective cluster)





R55NM5TS14