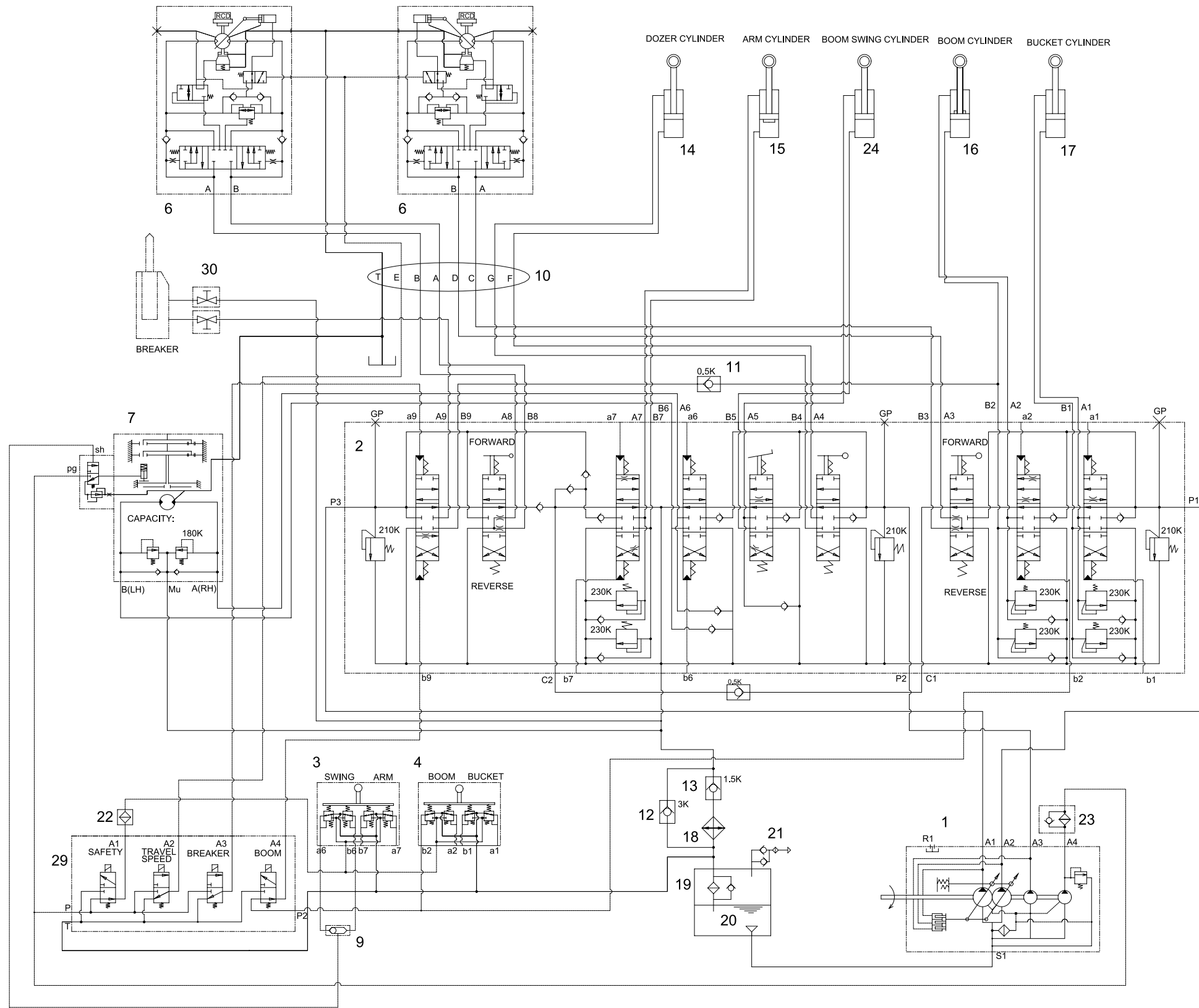


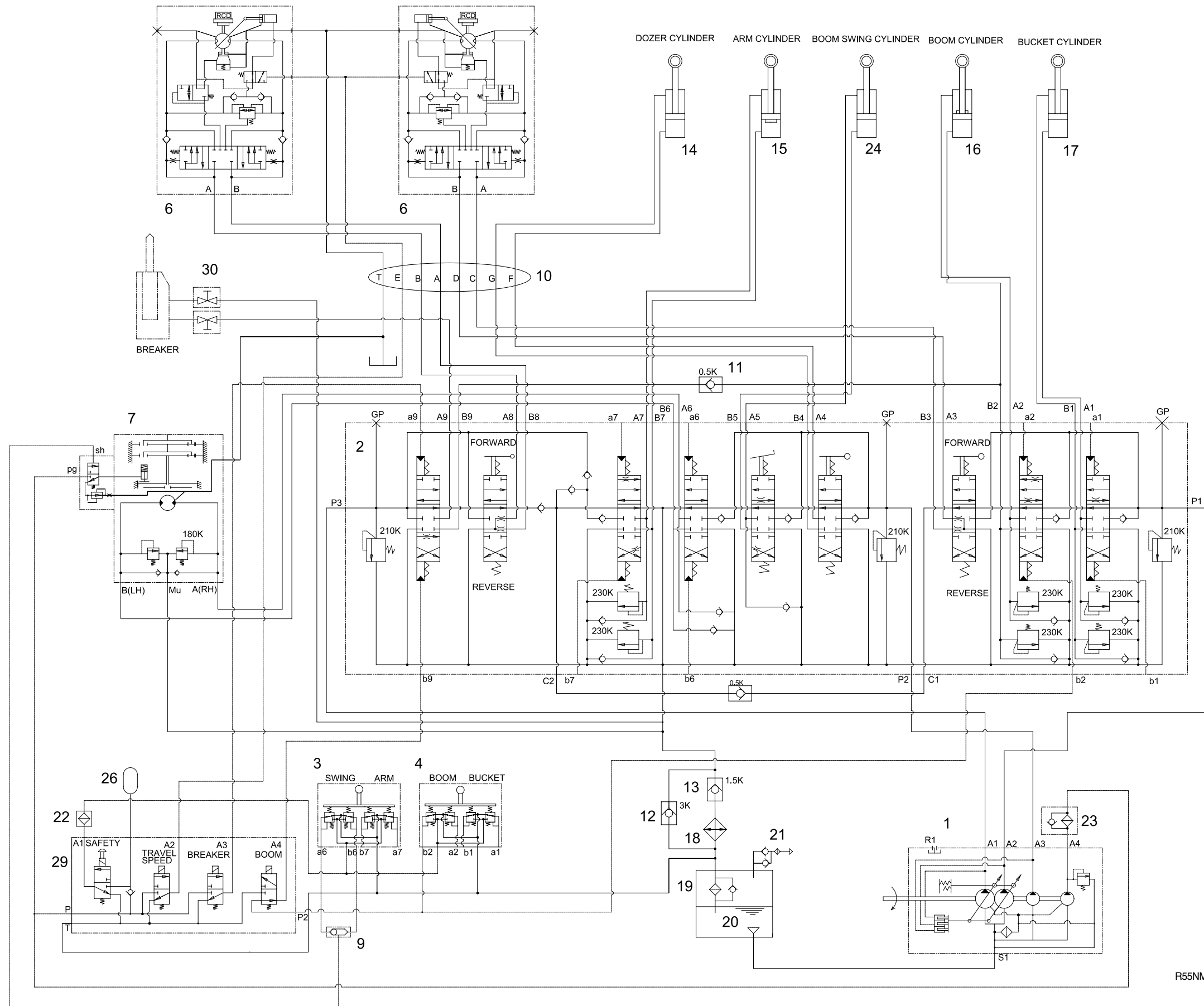
GROUP 1 HYDRAULIC CIRCUIT DIAGRAM

• Machine serial No : up to #374, except #294, 315 and 355 ~ 362.



- 1 MAIN PUMP
- 2 MAIN CONTROL VALVE
- 3 R.C.V LEVER(LH)
- 4 R.C.V LEVER(RH)
- 6 TRAVEL MOTOR
- 7 SWING MOTOR
- 9 SHUTTLE VALVE
- 10 TURNING JOINT
- 11 CHECK VALVE
- 12 CHECK VALVE
- 13 CHECK VALVE
- 14 DOZER CYLINDER
- 15 ARM CYLINDER
- 16 BOOM CYLINDER
- 17 BUCKET CYLINDER
- 18 HYD OIL COOLER
- 19 ELEMENT-RETURN
- 20 SUCTION STRAINER
- 21 AIR BREATHER
- 22 FILTER-LAST GUARD
- 23 FILTER-LINE
- 24 BOOM SWING CYLINDER
- 29 SOLENOID VALVE
- 30 STOP VALVE

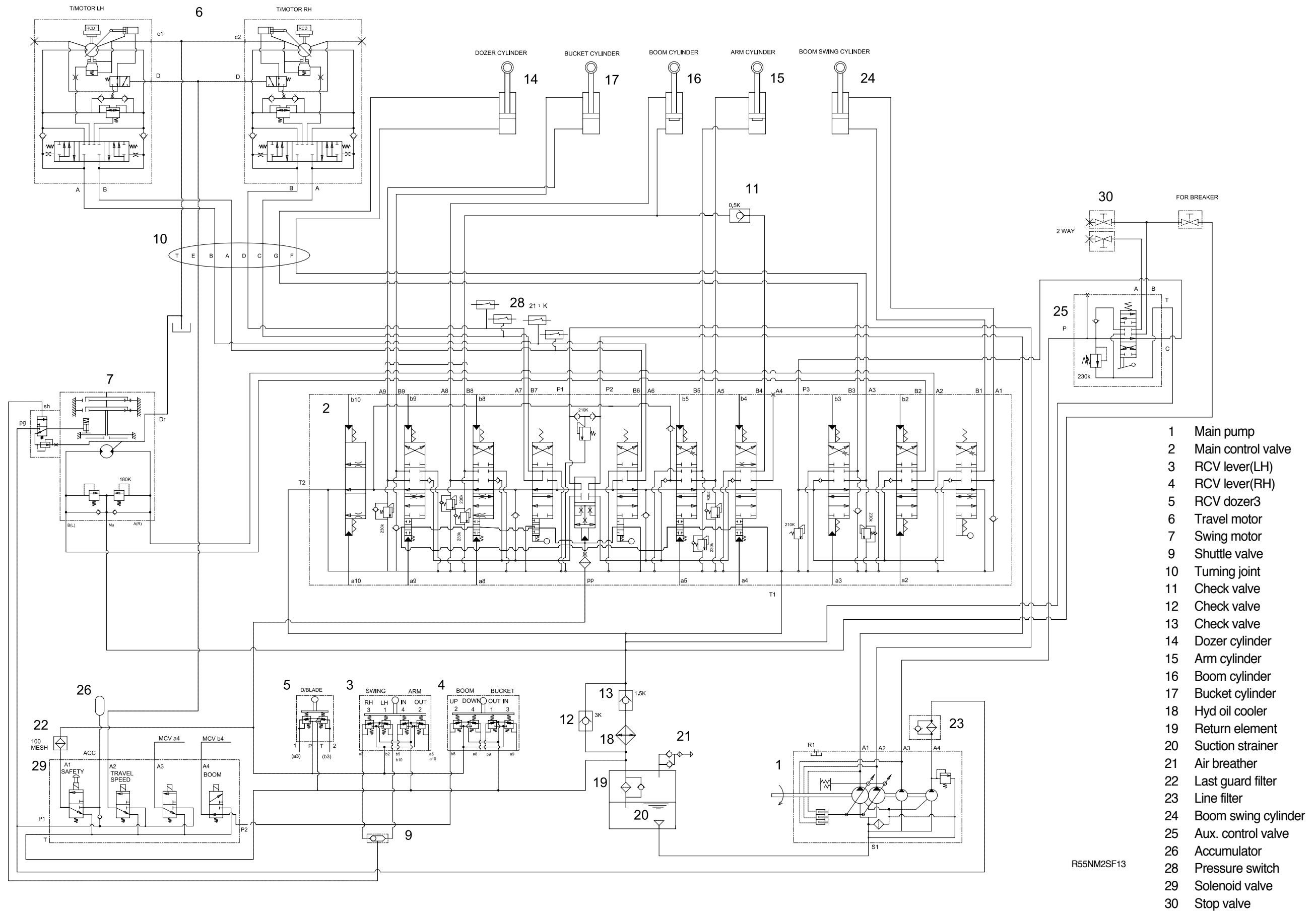
• Machine serial No : #375 and up to #0616, include #294, #315 and 355~362.



- 1 Main pump
- 2 Main control valve
- 3 RCV lever(LH)
- 4 RCV lever(RH)
- 6 Travel motor
- 7 Swing motor
- 9 Shuttle valve
- 10 Turning joint
- 11 Check valve
- 12 Check valve
- 13 Check valve
- 14 Dozer cylinder
- 15 Arm cylinder
- 16 Boom cylinder
- 17 Bucket cylinder
- 18 Hyd oil cooler
- 19 Return element
- 20 Suction strainer
- 21 Air breather
- 22 Last guard filter
- 23 Filter-line
- 24 Boom swing cylinder
- 26 Accumulator
- 29 Solenoid valve
- 30 Stop valve

R55NM2SF12

• Machine serial No : #0617 and up



- 1 Main pump
- 2 Main control valve
- 3 RCV lever(LH)
- 4 RCV lever(RH)
- 5 RCV dozer3
- 6 Travel motor
- 7 Swing motor
- 9 Shuttle valve
- 10 Turning joint
- 11 Check valve
- 12 Check valve
- 13 Check valve
- 14 Dozer cylinder
- 15 Arm cylinder
- 16 Boom cylinder
- 17 Bucket cylinder
- 18 Hyd oil cooler
- 19 Return element
- 20 Suction strainer
- 21 Air breather
- 22 Last guard filter
- 23 Line filter
- 24 Boom swing cylinder
- 25 Aux. control valve
- 26 Accumulator
- 28 Pressure switch
- 29 Solenoid valve
- 30 Stop valve