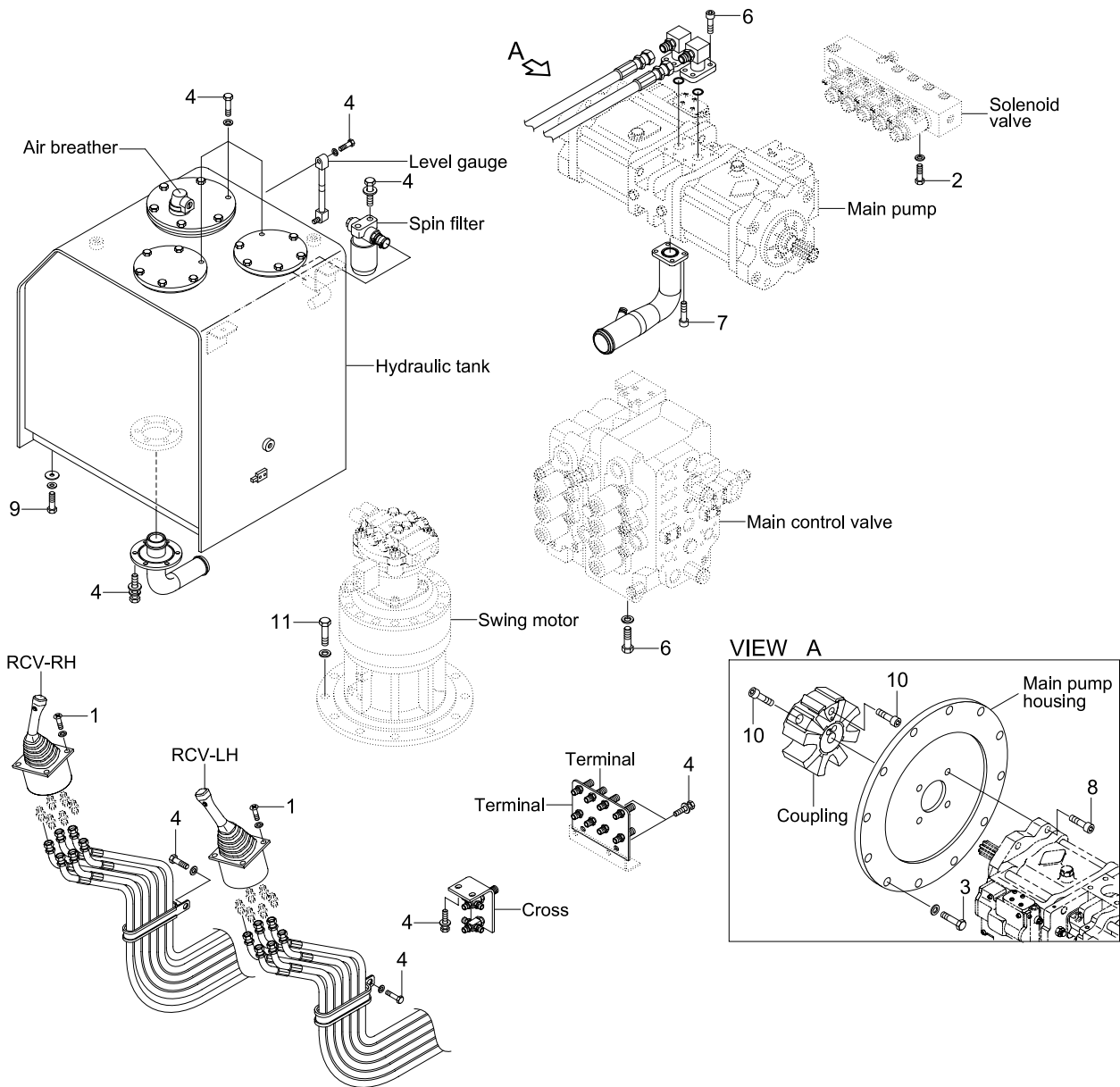


GROUP 4 HYDRAULIC SYSTEM

HYDRAULIC COMPONENTS MOUNTING 1



32079CM05

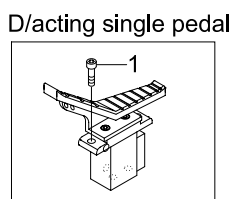
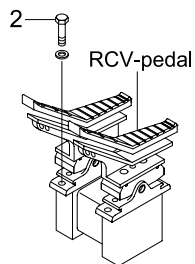
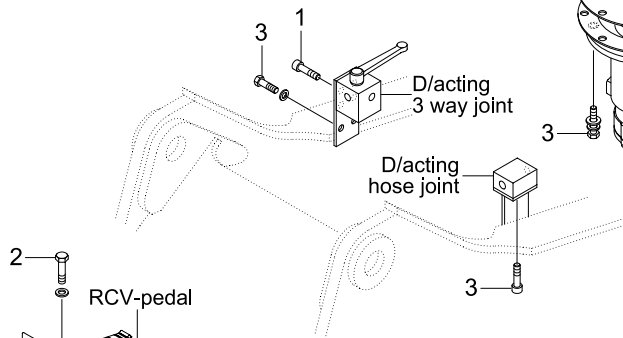
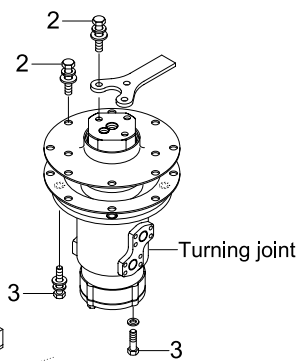
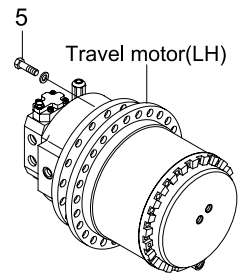
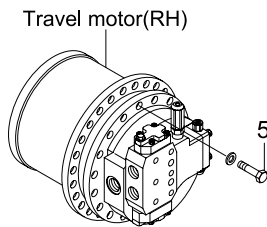
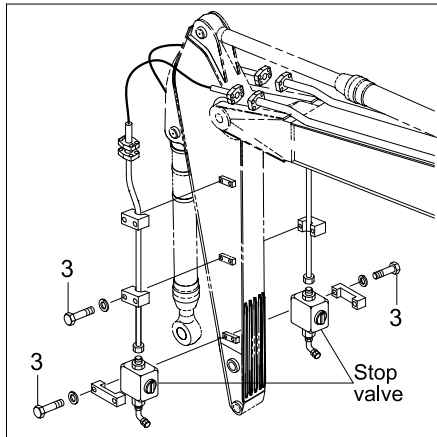
· Tightening torque

Item	Size	kgf · m	lbf · ft
1	M 6 × 1.0	1.05 ± 0.2	7.6 ± 1.45
2	M 8 × 1.25	2.5 ± 0.5	18.1 ± 3.6
3	M10 × 1.5	2.81 ± 0.3	20.3 ± 2.2
4	M10 × 1.5	6.9 ± 1.4	49.9 ± 10.1
5	M12 × 1.75	12.2 ± 1.3	88.9 ± 9.4
6	M12 × 1.75	14.7 ± 2.2	106 ± 15.9

Item	Size	kgf · m	lbf · ft
7	M16 × 2.0	29.7 ± 4.5	215 ± 32.5
8	M20 × 2.5	42 ± 4.5	304 ± 32.5
9	M20 × 2.5	46 ± 5.0	333 ± 36
10	M20 × 2.5	46.5 ± 2.5	336 ± 18.1
11	M20 × 3.0	100 ± 10	723 ± 72
-	-	-	-

HYDRAULIC COMPONENTS MOUNTING 2

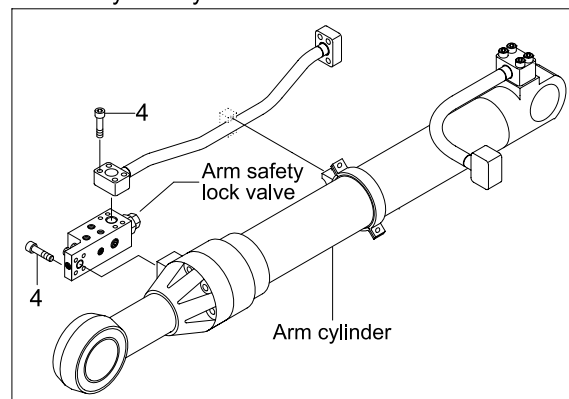
Double acting attachment piping



Boom safety lock system



Arm safety lock system



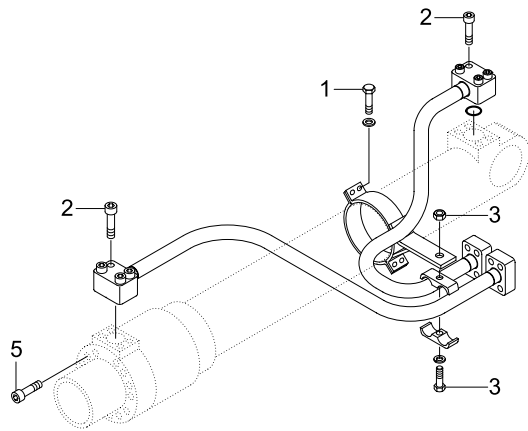
32079CM06

· Tightening torque

Item	Size	kgf · m	lbf · ft
1	M 8 × 1.25	4.05 ± 0.8	29.3 ± 5.8
2	M10 × 1.5	6.9 ± 1.4	49.9 ± 10.1
3	M12 × 1.75	12.8 ± 3.0	92.6 ± 21.7

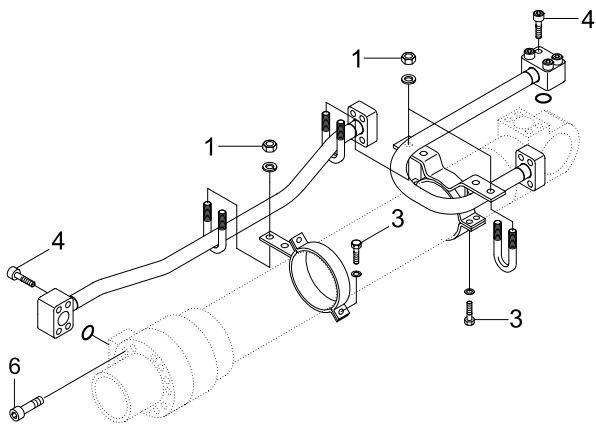
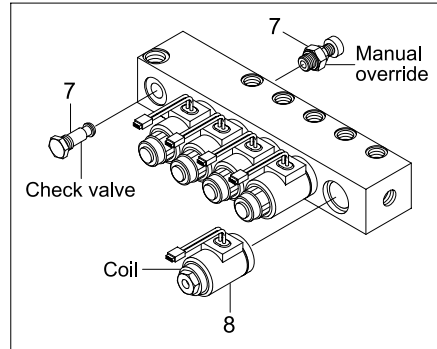
Item	Size	kgf · m	lbf · ft
4	M12 × 1.75	9.4 ± 1.0	68 ± 8.0
5	M24 × 3.0	84 ± 8	608 ± 58
-	-	-	-

HYDRAULIC COMPONENTS MOUNTING 3

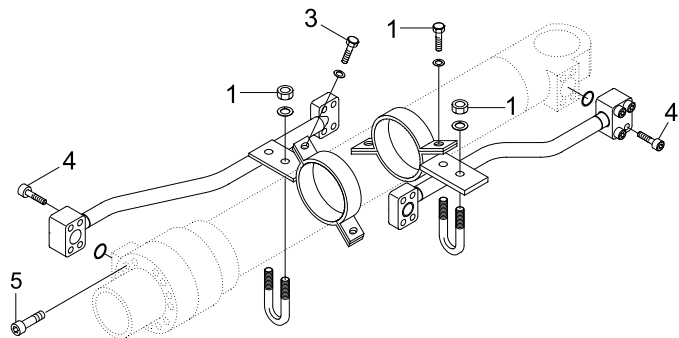


BOOM CYLINDER

Solenoid valve



ARM CYLINDER



BUCKET CYLINDER

32079CM07

· Tightening torque

Item	Size	kgf · m	lbf · ft
1	M10 × 1.5	3.2 ± 0.3	23.1 ± 2.2
2	M10 × 1.5	5.4 ± 0.5	39.1 ± 3.6
3	M12 × 1.75	5.5 ± 0.6	39.8 ± 4.3
4	M12 × 1.75	9.4 ± 1.0	68.0 ± 7.2

Item	Size	kgf · m	lbf · ft
5	M18 × 2.5	32 ± 3.0	232 ± 21.7
6	M20 × 2.5	46 ± 5.0	333 ± 36.2
7	M22 × 2.5	4.1	29.6
8	M27 × 3.0	5.1	36.9