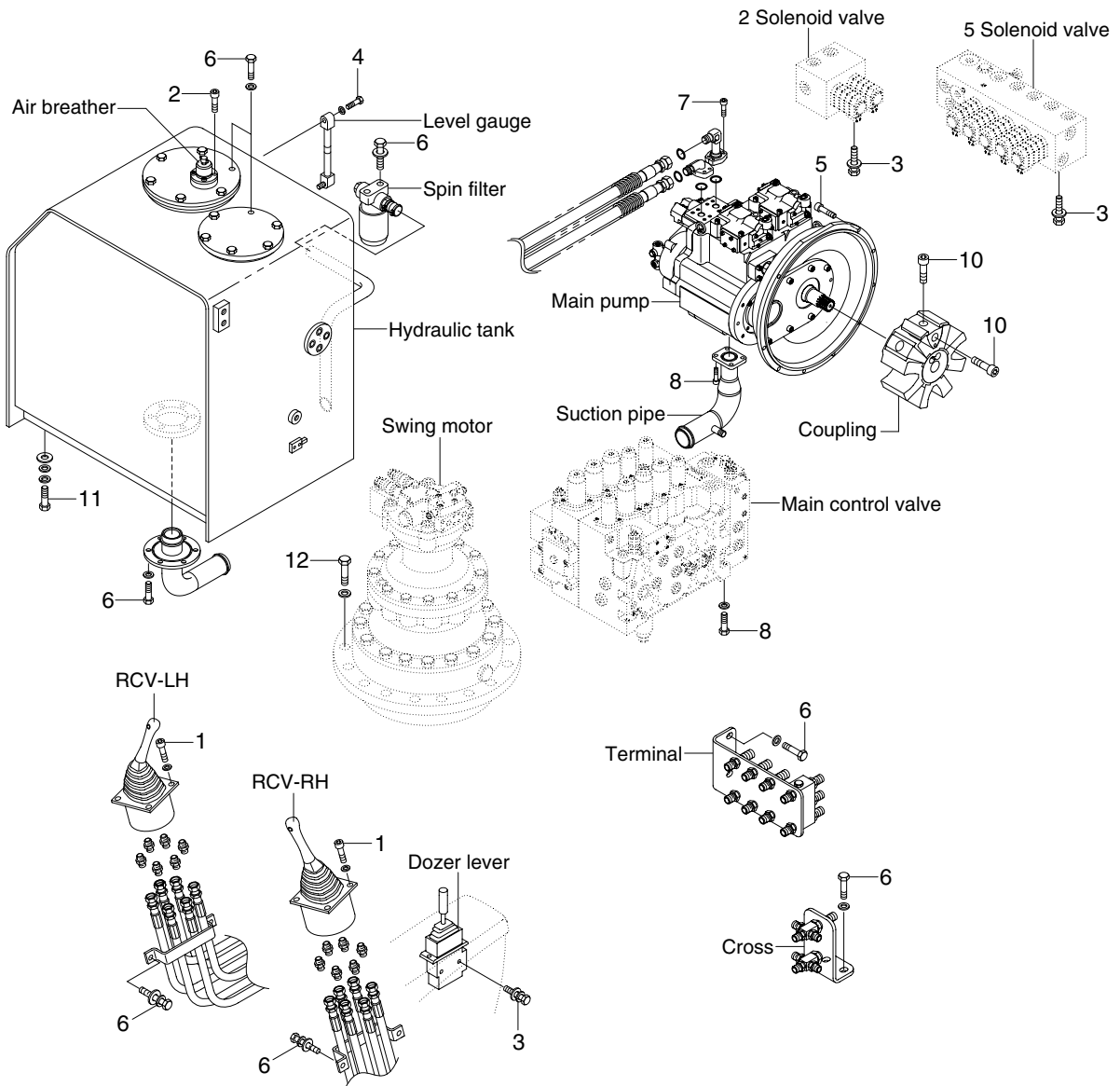


GROUP 4 HYDRAULIC SYSTEM

1. HYDRAULIC COMPONENTS MOUNTING 1



20W7A9CM05

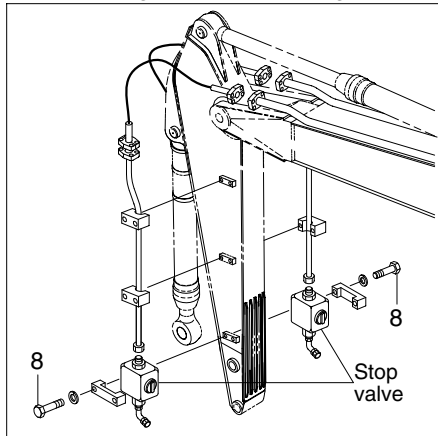
· Tightening torque

Item	Size	kgf · m	lbf · ft
1	M 6×1.0	1.05±0.2	7.6±1.45
2	M 6×1.0	1.44±0.3	10.4±2.2
3	M 8×1.25	2.5±0.5	18.1±3.6
4	M10×1.5	0.5	3.6
5	M10×1.5	4.8±0.3	34.7±2.2
6	M10×1.5	6.9±1.4	49.9±10.1
7	M10×1.5	8.27±1.7	59.8±12.3

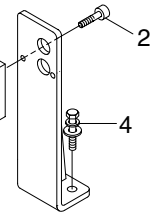
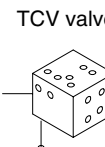
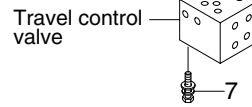
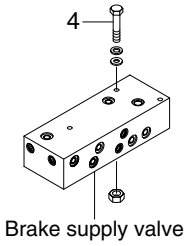
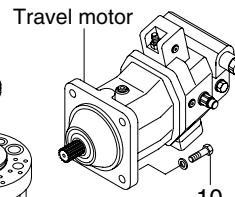
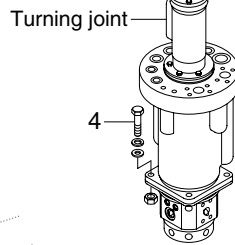
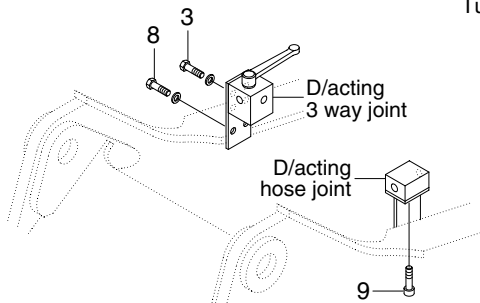
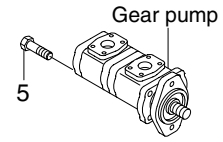
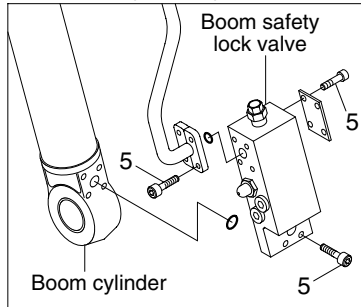
Item	Size	kgf · m	lbf · ft
8	M12×1.75	12.2±1.3	88.2±9.4
9	M12×1.75	14.7±2.2	106±15.9
10	M18×2.5	32±1.0	231±7.2
11	M20×2.5	46±5.1	333±36.9
12	M20×2.5	57.9±8.7	419±62.9
-	-	-	-

2. HYDRAULIC COMPONENTS MOUNTING 2

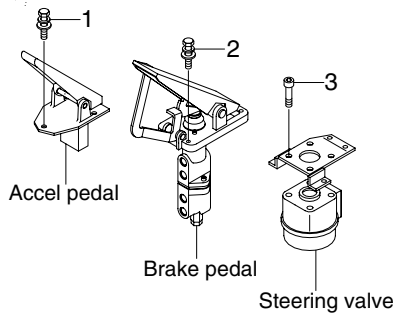
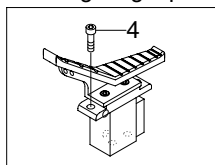
Double acting attachment piping



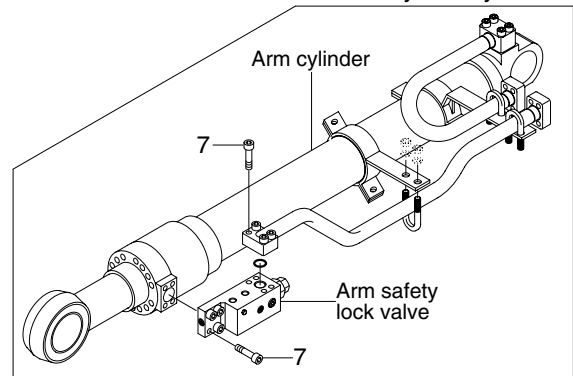
Boom safety lock system



D/acting single pedal



Arm safety lock system



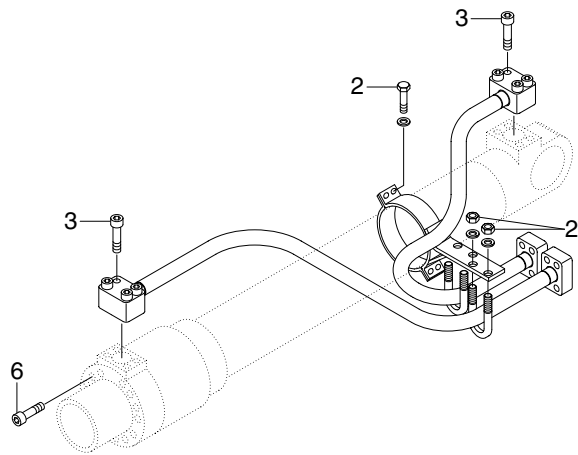
20W7A9CM06

• Tightening torque

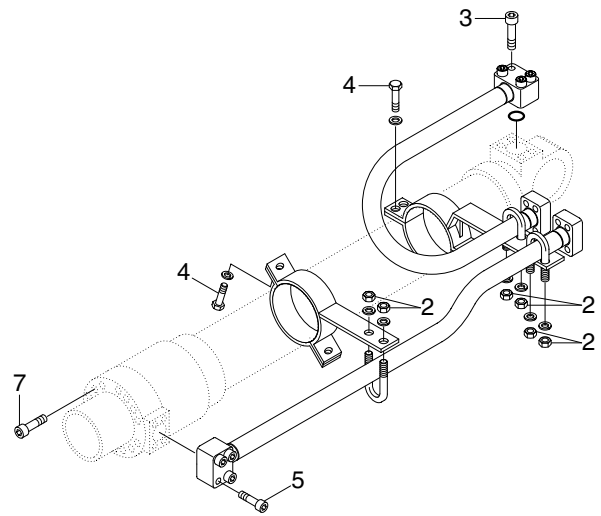
Item	Size	kgf · m	lbf · ft
1	M 6×1.0	1.05±0.2	7.6±1.4
2	M 8×1.25	2.5±0.5	18.1±3.6
3	M 8×1.25	4.05±0.8	29.3±5.8
4	M10×1.5	6.9±1.4	49.9±10.1
5	M10×1.5	8.27±1.7	59.8±12.3

Item	Size	kgf · m	lbf · ft
6	M12×1.75	9.3±1.9	67.3±13.7
7	M12×1.75	12.0±1.3	86.8±9.4
8	M12×1.75	12.8±3.0	92.6±21.7
9	M12×1.75	14.7±2.2	106±15.9
10	M16×2.0	29.6±3.2	214±23.1

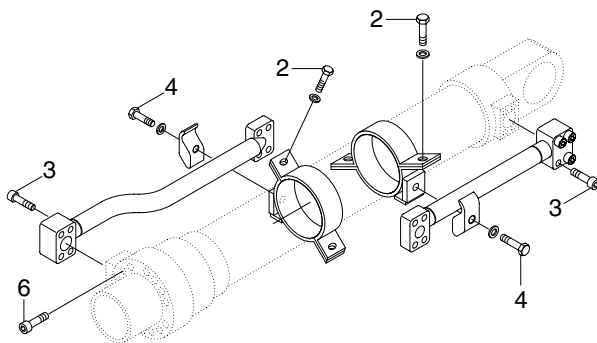
3. HYDRAULIC COMPONENTS MOUNTING 3



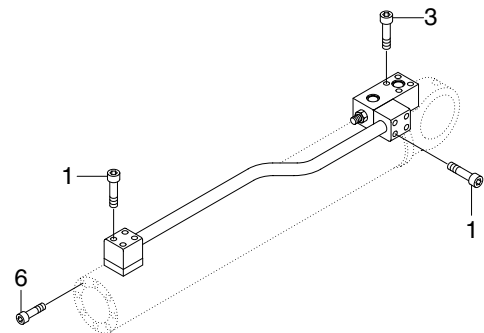
BOOM CYLINDER



ARM CYLINDER



BUCKET CYLINDER



DOZER & OUTRIGGER CYLINDER

20W79CM07

· Tightening torque

Item	Size	kgf · m	lbf · ft
1	M8 × 1.25	2.7±0.3	19.5±2.2
2	M10×1.5	3.2±0.3	23.1±2.2
3	M10×1.5	5.4±0.5	39.1±3.6
4	M12×1.75	5.5±0.6	39.8±4.3

Item	Size	kgf · m	lbf · ft
5	M12×1.75	9.4±1.0	68.0±7.2
6	M16×2.0	23±2.0	166±14.5
7	M18×2.5	32±3.0	232±21.7