

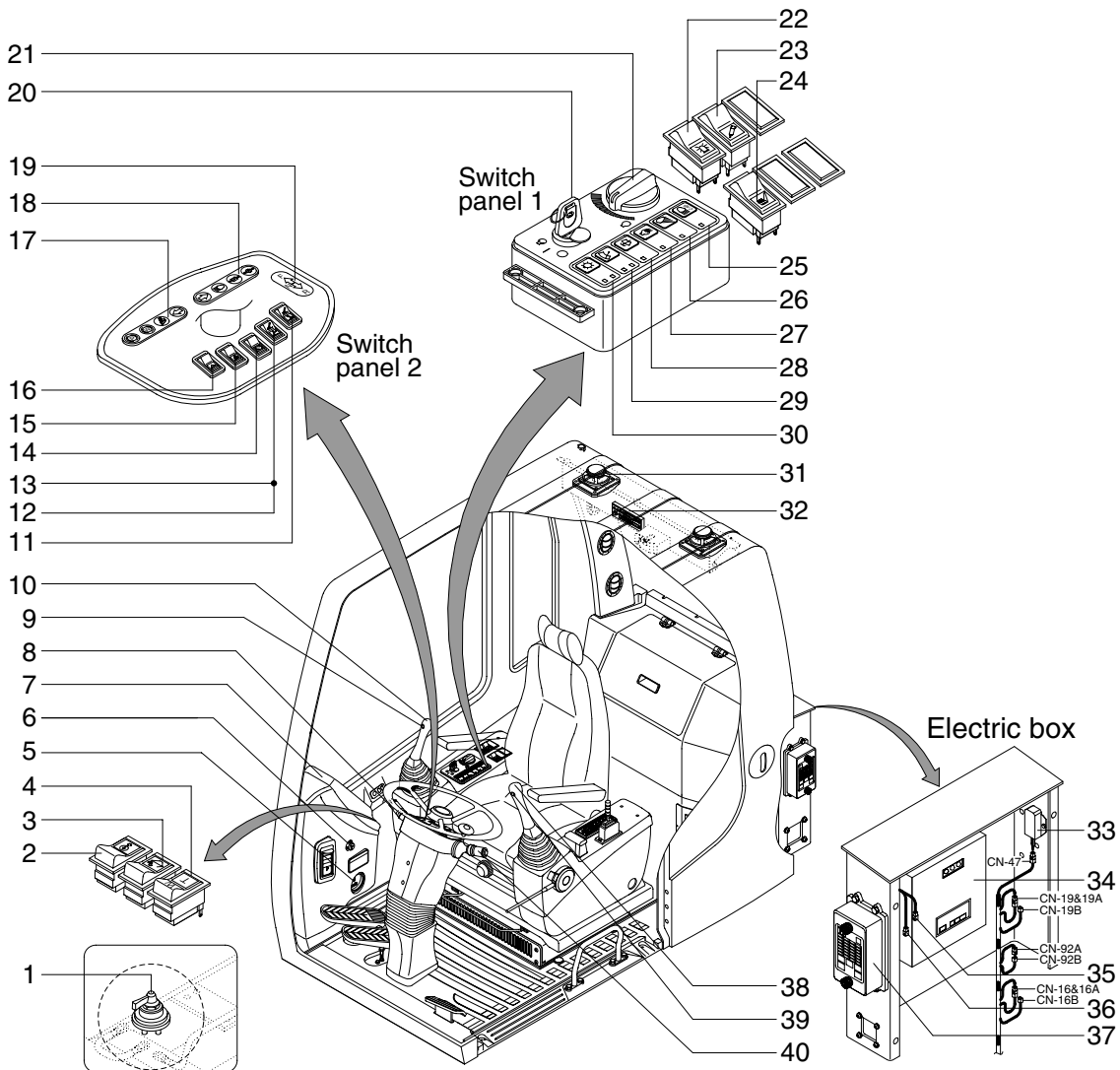
SECTION 4 ELECTRICAL SYSTEM

Group 1 Component Location	4-1
Group 2 Electrical Circuit	4-3
Group 3 Electrical Component Specification	4-23
Group 4 Connectors	4-32

SECTION 4 ELECTRICAL SYSTEM

GROUP 1 COMPONENT LOCATION

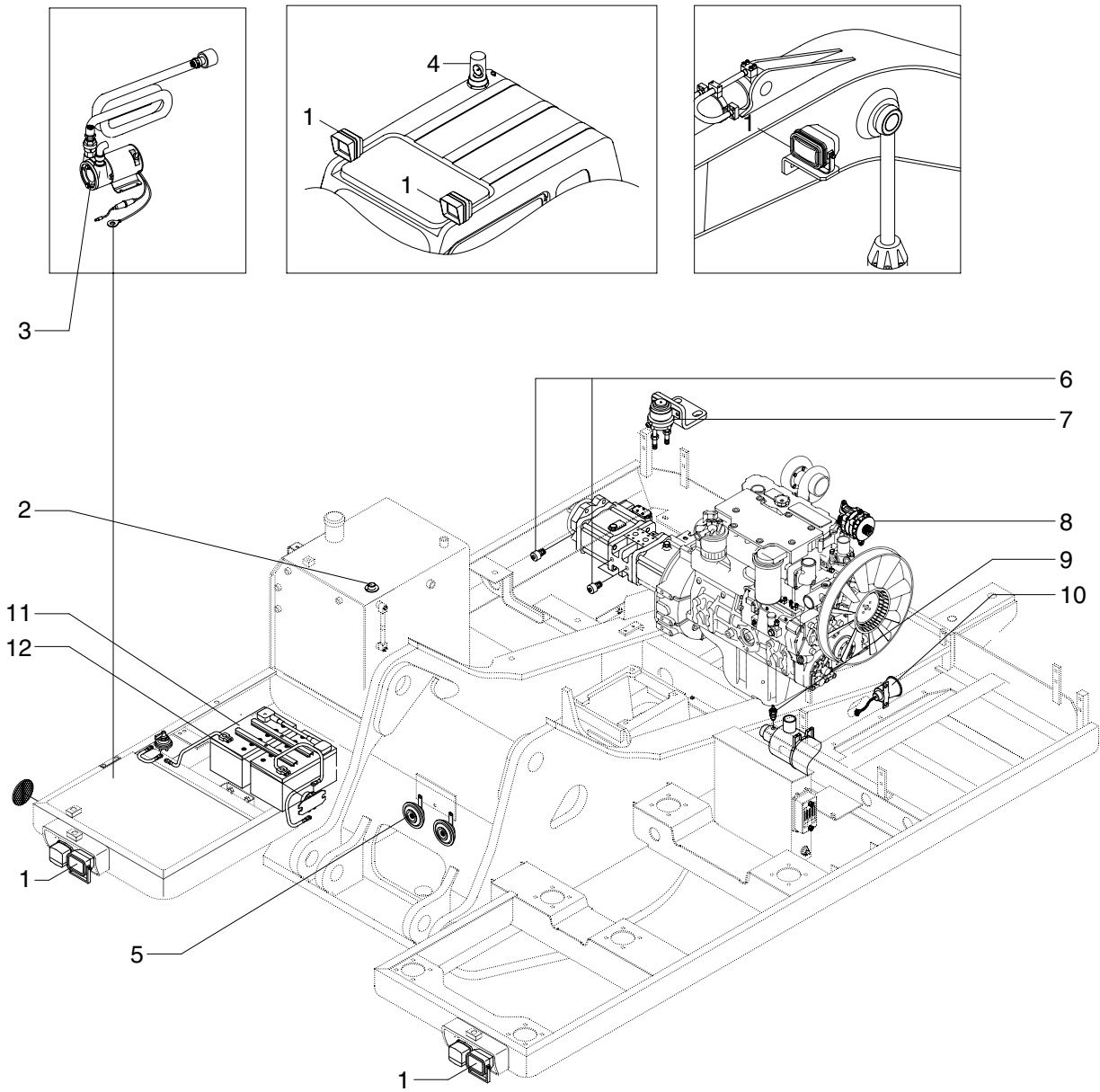
1. LOCATION 1



14W7A4EL01

- | | | |
|------------------------------|-------------------------------|------------------------------|
| 1 Master switch | 15 Ram lock switch | 29 Wiper switch |
| 2 Overload switch | 16 Hazard switch | 30 Main light switch |
| 3 Quick clamp switch | 17 Travel warning indicator 1 | 31 Speaker |
| 4 Travel / Work switch | 18 Travel warning indicator 2 | 32 Cassette radio |
| 5 Service meter | 19 Forward/Reverse pilot lamp | 33 Prolix resistor |
| 6 Cigar lighter | 20 Start switch | 34 Machine control unit |
| 7 Cluster | 21 Accel dial | 35 J1939 serial connector |
| 8 Multi function switch(RH) | 22 Beacon switch | 36 RS232 serial connector |
| 9 Breaker operation switch | 23 Breaker selection switch | 37 Fuse box |
| 10 Horn switch | 24 Heated seat switch | 38 One touch decel switch |
| 11 4 Outrigger switch(LH/RH) | 25 Cab light switch | 39 Power max switch |
| 12 4 Outrigger switch | 26 Work light switch | 40 Multi function switch(LH) |
| 13 Outrigger / Dozer switch | 27 Preheat switch | |
| 14 Parking brake switch | 28 Washer switch | |

2. LOCATION 2



14W7A4EL02

- | | | | | | |
|---|------------------|----|--------------------|----|---------------------|
| 1 | Lamp | 6 | Pressure sender | 11 | Travel alarm buzzer |
| 2 | Fuel sender | 7 | Start relay | 12 | Battery |
| 3 | Fuel filler pump | 8 | Heater relay | 13 | Battery relay |
| 4 | Beacon lamp | 9 | Alternator | | |
| 5 | Horn | 10 | Air cleaner switch | | |