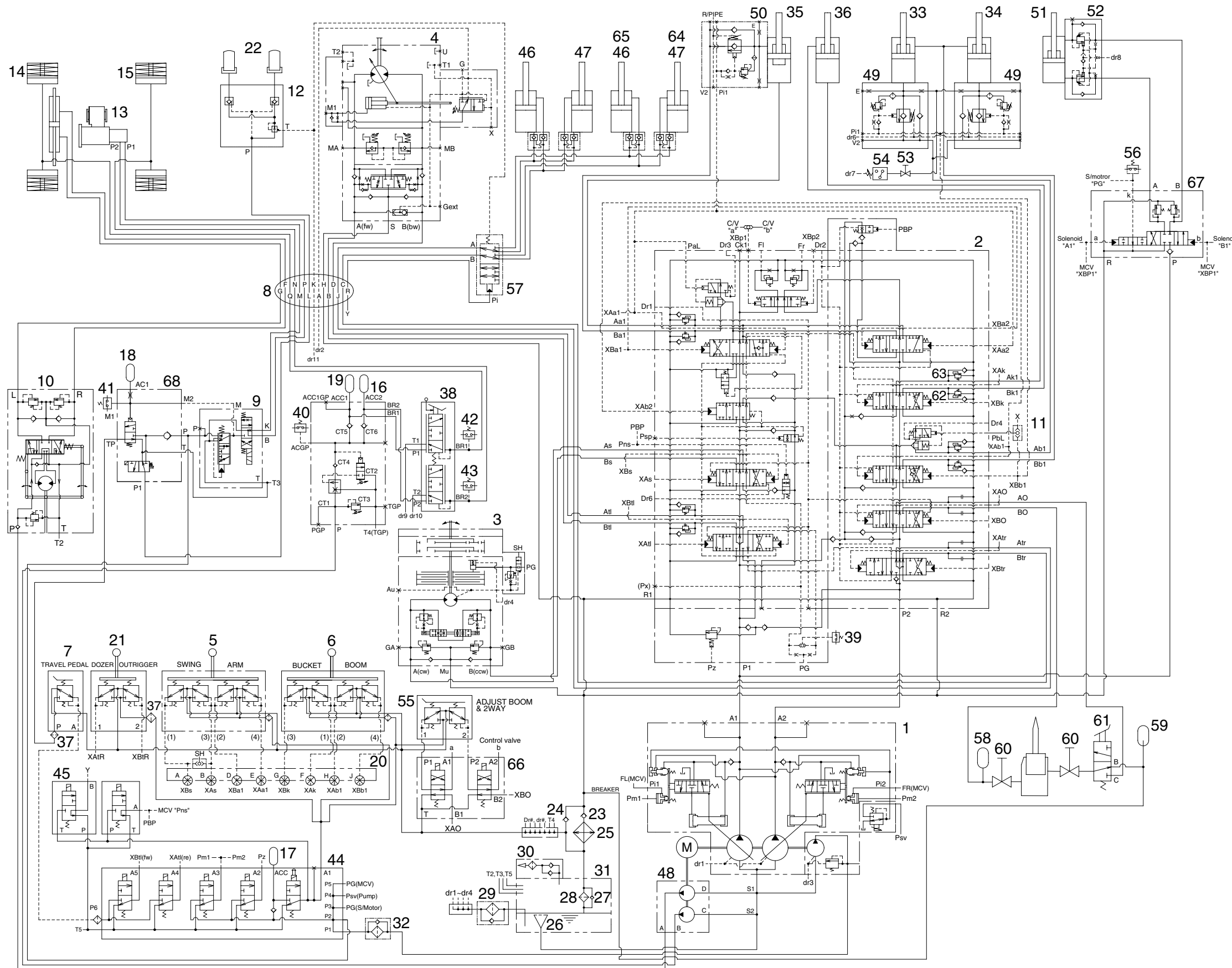


## SECTION 3 HYDRAULIC SYSTEM

Group 1 Hydraulic Circuit .....	3-1
Group 2 Main Circuit .....	3-2
Group 3 Pilot Circuit .....	3-5
Group 4 Single Operation .....	3-13
Group 5 Combined Operation .....	3-28

# SECTION 3 HYDRAULIC SYSTEM

## GROUP 1 HYDRAULIC CIRCUIT



- 1 Main pump
- 2 Main control valve
- 3 Swing motor
- 4 Travel motor
- 5 RCV lever(LH)
- 6 RCV lever(RH)
- 7 RCV pedal
- 8 Turning joint
- 9 Travel control valve
- 10 Steering valve
- 11 Shuttle valve
- 12 Locking valve
- 13 Transmission
- 14 Front axle
- 15 Rear axle
- 16 Brake supply valve
- 17 Accumulator(option)
- 18 Accumulator(option)
- 19 Accumulator(option)
- 20 Terminal assy
- 21 RCV dozer(option)
- 22 Oscillating cylinder
- 23 Check valve
- 24 Check valve
- 25 Oil cooler
- 26 Strainer assy
- 27 Bypass check valve
- 28 Return filter
- 29 Spin filter
- 30 Air breather
- 31 Hydraulic tank
- 32 Line filter
- 33 Boom cylinder(LH)
- 34 Boom cylinder(RH)
- 35 Arm cylinder
- 36 Bucket cylinder
- 37 Last guard filter
- 38 Brake valve
- 39 Pressure switch(option)
- 40 Pressure switch(option)
- 41 Pressure switch(option)
- 42 Pressure switch(option)
- 43 Pressure switch(option)
- 44 5 solenoid valve
- 45 1 solenoid valve
- 46 Outrigger cylinder(RH, option)
- 47 Outrigger cylinder(LH, option)
- 48 Gear pump
- 49 Safety lock valve(option)
- 50 Safety lock valve(option)
- 51 Adjustable boom cylinder(option)
- 52 Safety lock valve(option)
- 53 Shut off valve(option)
- 54 Pressure switch(option)
- 55 Option pedal(option)
- 56 Pressure switch(option)
- 57 Selector valve(option)
- 58 Accumulator(option)
- 59 Accumulator(option)
- 60 Stop valve(option)
- 61 3 way selector valve(option)
- 62 Port relief valve(option)
- 63 Port relief valve(option)
- 64 Dozer cylinder(LH, option)
- 65 Dozer cylinder(RH, option)
- 66 Selector solenoid valve(option)
- 67 Control valve(option)
- 68 Travel control valve

20W7A3HC01A