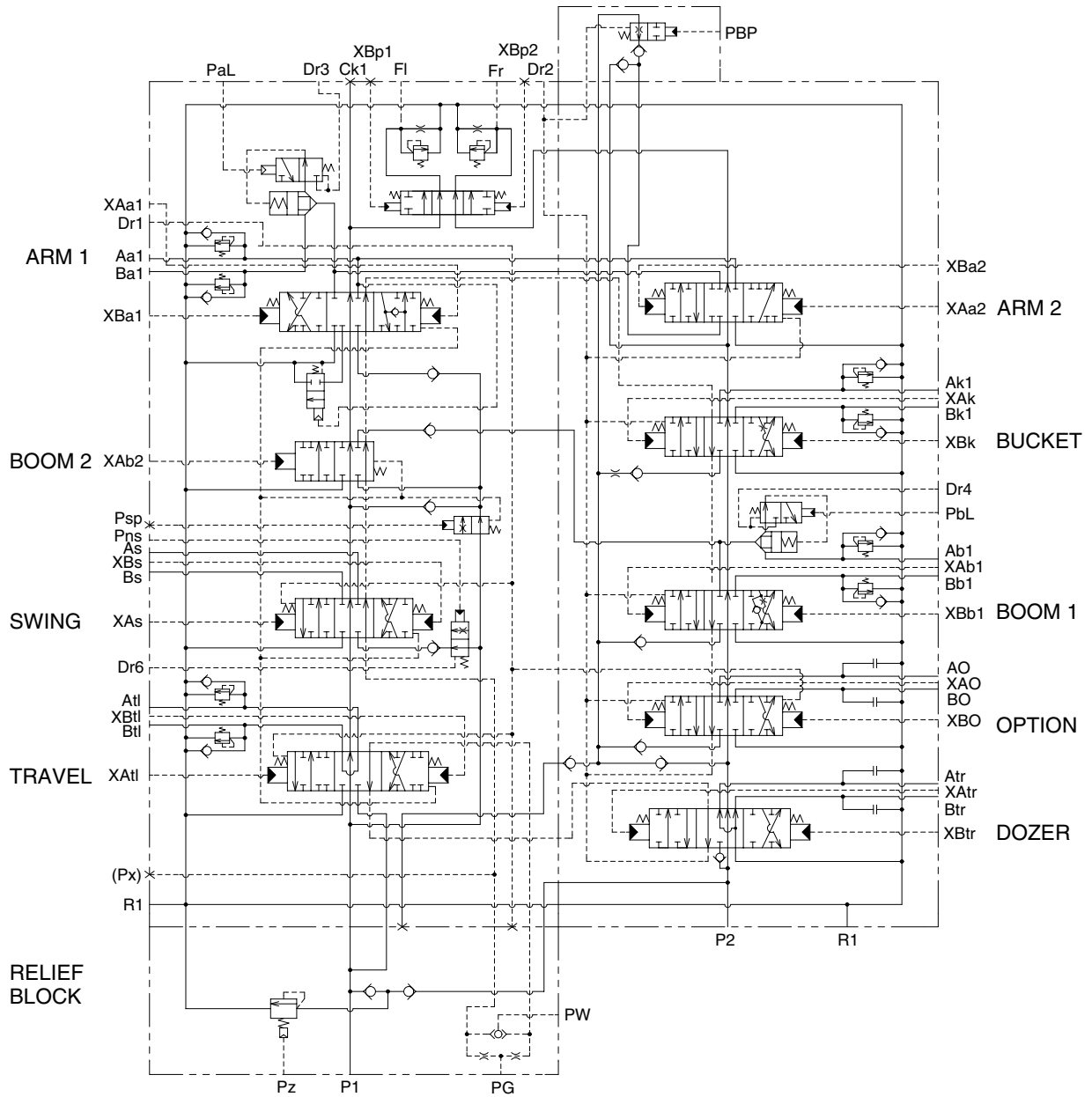


101	Casing A	264	O-ring	376	Spring
102	Casing B	273	Socket screw	377	Spring
103	Relief valve block	301	Dozer spool	378	Spring
104	Boom priority valve	302	Arm 1 spool assy	379	Spring
152	Plug	303	Boom 1 spool assy	392	Bypass cut spool
153	Plug	304	Bucket spool	395	Swing priority spool
154	Plug	305	Swing spool	401	Spool
155	Plug	306	Arm 2 spool	424	Spring
159	Plug	307	Boom 2 spool	425	Spring
162	O-ring	309	Spool(Optional)	438	Rod
164	O-ring	310	Travel spool	511	Poppet
165	O-ring	320	Spring	515	Poppet
166	O-ring	321	Spring	516	Poppet
167	O-ring	322	Spring	517	Poppet
168	O-ring	323	Spring	521	Spring
169	O-ring	326	Spring	523	Spring
201	Cover	327	Spring	551	Plug
202	Cover	328	Spring	552	Plug
203	Cover	329	Spring	553	Plug
204	Cover	331	Spring seat	561	O-ring
205	Cover	332	Spring seat	601	Main relief valve
207	Cover	333	Bolt	602	Port relief valve
209	Flange	334	Stopper	611	Nega-con relief valve
251	Control valve assy	335	Stopper	971	Socket screw
252	Lock valve assy	336	Bolt	974	Socket screw
254	Swing logic valve assy	337	Stopper	975	Socket screw
261	O-ring	339	Stopper	976	Socket screw
262	O-ring	370	Spring		

20W7A2MC02

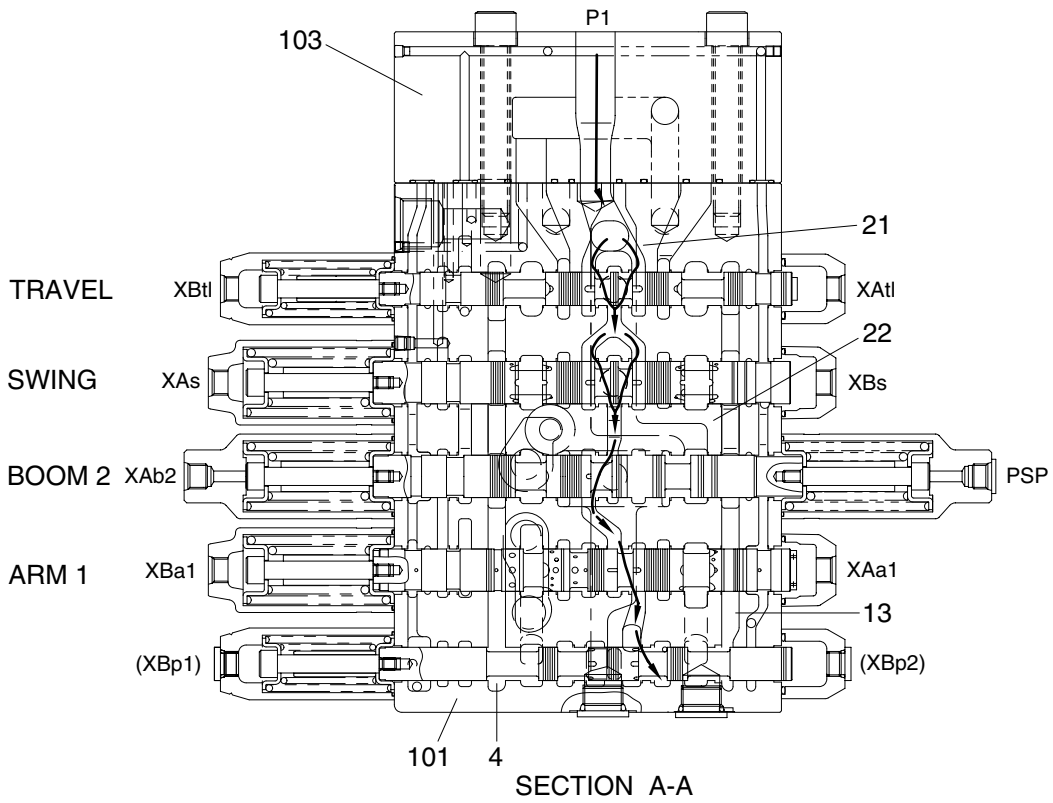
2. HYDRAULIC CIRCUIT



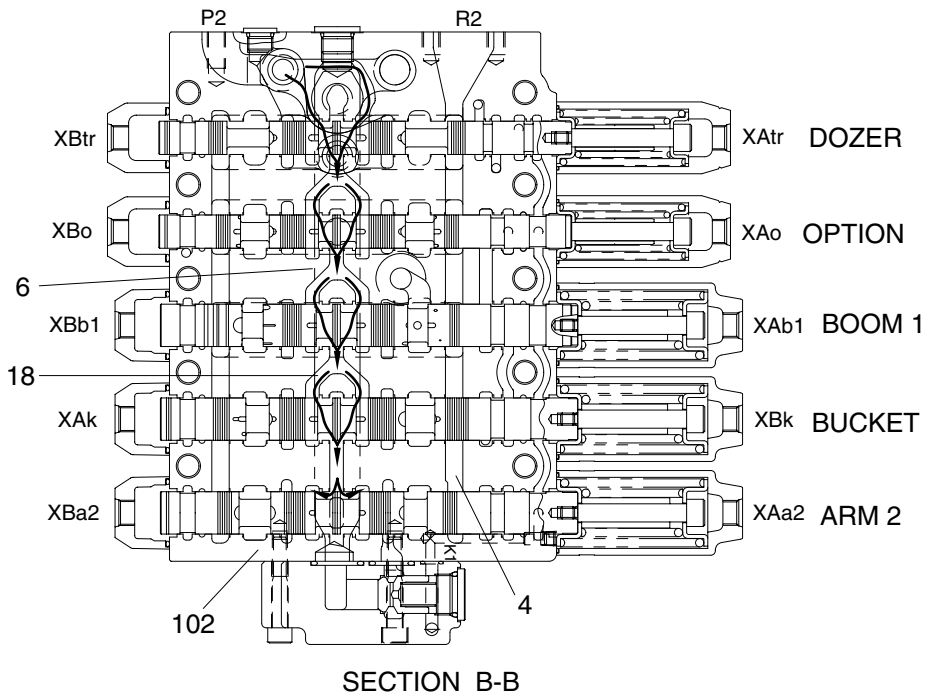
20W7A2MC04

3. FUNCTION

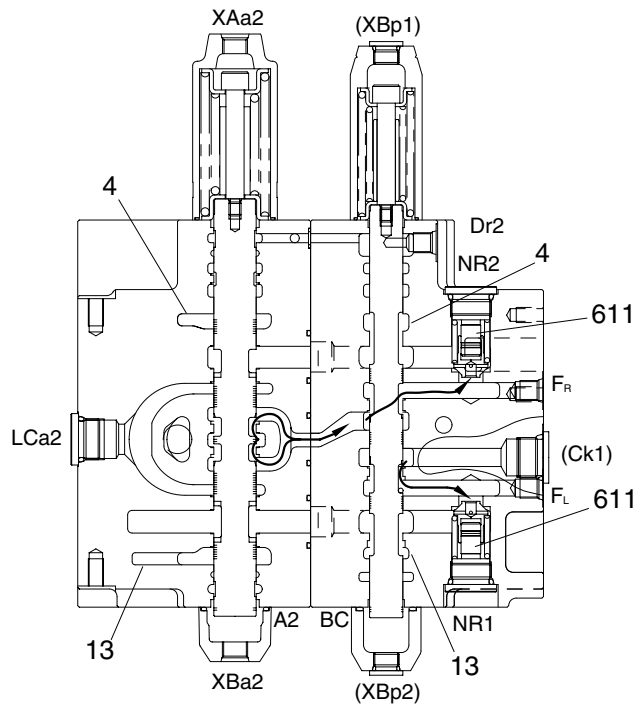
1) CONTROL IN NEUTRAL POSITION



20W7A2MC25

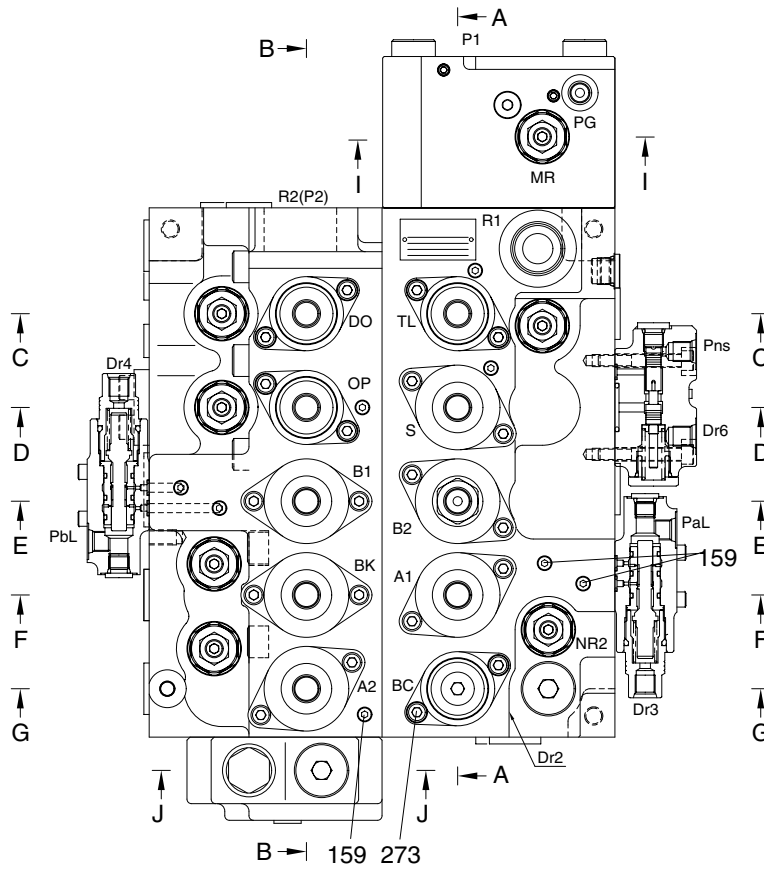


20W7A2MC26



SECTION G-G

21072MC27



20W7A2MC28

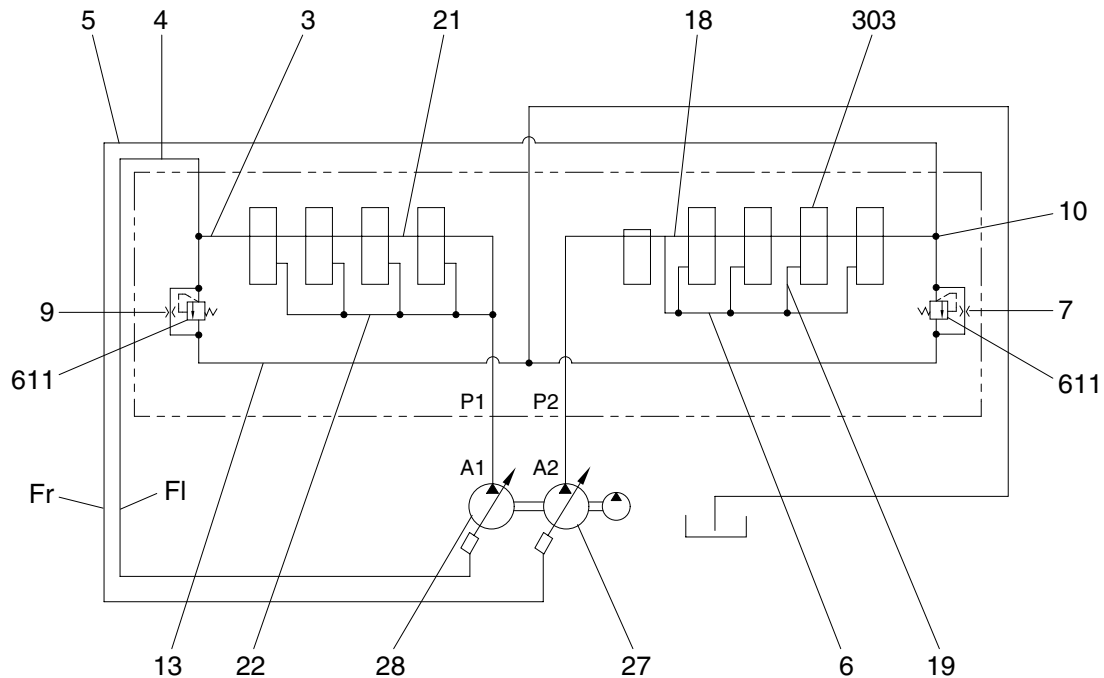
The hydraulic fluid from the pump A1 flows into casing A (101) through the inlet port (P1), through the center bypass (21) and the parallel path (22). The hydraulic fluid from the pump A2 flows into casing B (102) through the inlet port (P2) through the center bypass (18) and the parallel path (6).

The hydraulic fluid from the pump A1 is directed to the tank through the center bypass (21), negative control orifice (NR1), the return path (13) and the return port (R2). The hydraulic fluid from the pump A2 also flows to the tank through the center bypass (18), negative control orifice (NR2), return path (4) and return port (R2). The hydraulic fluid in paths (6) and (22) is blocked and cannot return to the tank.

In case a control lever is operated, the hydraulic fluid from the pump A2 is supplied to the dozer spool (301) from path (18) and to the spools: option (309), boom 1 (303), bucket (304) and arm 2 dozer (306) from path (6). Additionally, the hydraulic fluid from the pump A1 is supplied to the travel spool (310) from path (7) while the swing (305), boom 2 (307) and arm 1 (302) spools are supplied from path (22).

2) NEGATIVE CONTROL

(1) General operation

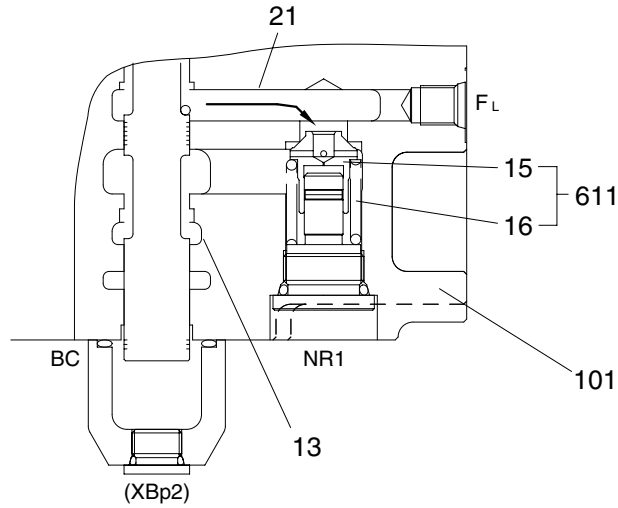


20W7A2MC29

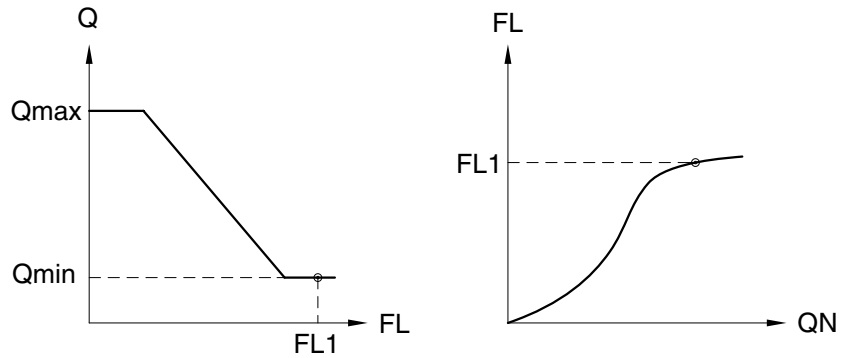
The negative control signal pressure from the center bypass (18, 21) occurs in the following cases and controls the discharge of the pump.

1. Neutral condition when no function is being actuated.
2. The pilot control lever is partially operated.

The hydraulic fluid of the pump A1 (28) flows into the return passage (13) through the center bypass (21), the path (3) and orifice (9) (Within the poppet (15)). The restriction caused by this orifice thereby pressurizes path (3). This pressure is transferred as the negative control signal pressure FI to the pump A1 regulator through the negative control line (4). It controls the pump regulator so as to decrease the discharge of the pump A1 (28).



21072MC30

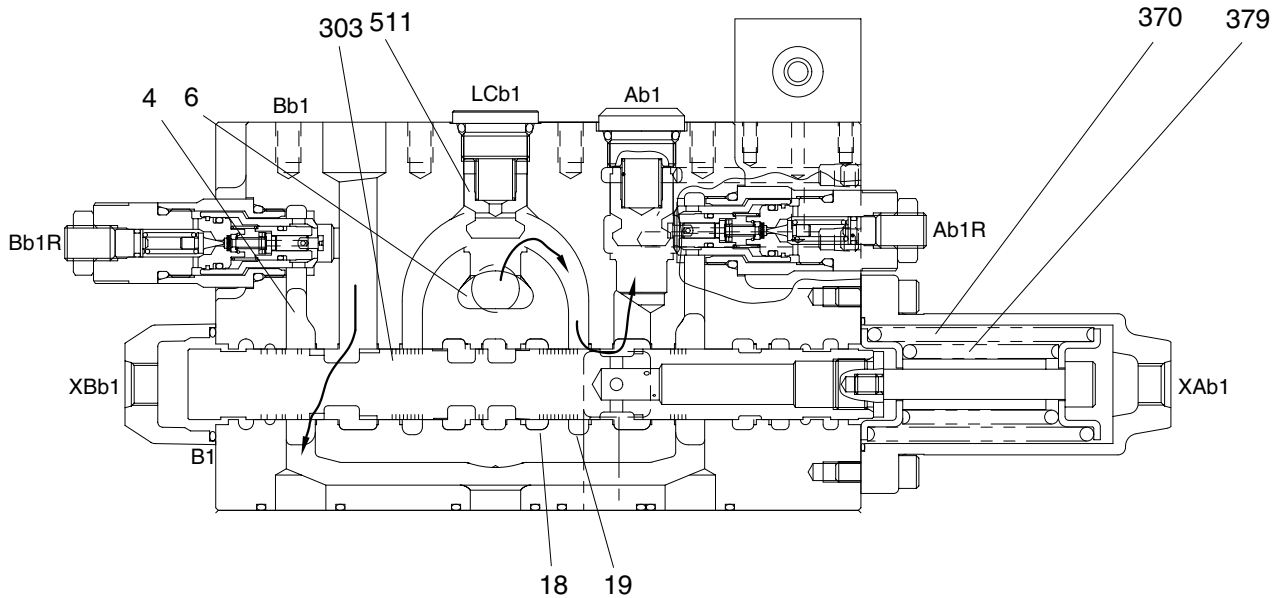


21072MC31

The negative control relief valve (611) consists of poppet (15), spring (16) and casing (101). When the hydraulic fluid in the center bypass increases to the level that the pressure in the path (3) reaches the set pressure of the spring (16), the hydraulic fluid in the path (3) pushes open the poppet (15) and escapes into the return path (13).

In the unloaded state, the hydraulic fluid of the pump A1 (28) entirely flows to the tank through the path (21), orifice (9) and the return path (13). Therefore the pressure FL in the path (3) becomes maximum (FL1) because all the discharge is reduced by the orifice (9) which in turn destroys the pump A1 (28) so as to minimize the tilting angle and consequent discharge of the pump A1 (28). (Qmin)

(2) Negative control (With fine metering)



21072MC32

In the case, for example, when the pilot control lever for main boom is slightly operated, the pilot pressure XAb1 shifts the main boom spool (303) partially in the left direction. So the path (19) is partially opened and the center bypass (18) is shut slightly. The hydraulic fluid thereby separates. One part flows via the orifice (7) through the path (18) and the other portion flows into the parallel path (6), the path (19) and the port Ab1. The flow from the path (18) through the orifice (7) decreases slightly and the pressure Fr in the path (10) thereby also slightly decreases. As the pressure Fr becomes lower, the discharge of the pump A2 (27) increases. With the pilot control lever shifted even more the path (18) is shut off by the shifting of the spool (303) and then the flow through the bypass becomes zero. The pressure in the path (10) becomes zero and the discharge of the pump A2 (27) becomes maximum. (Qmax)

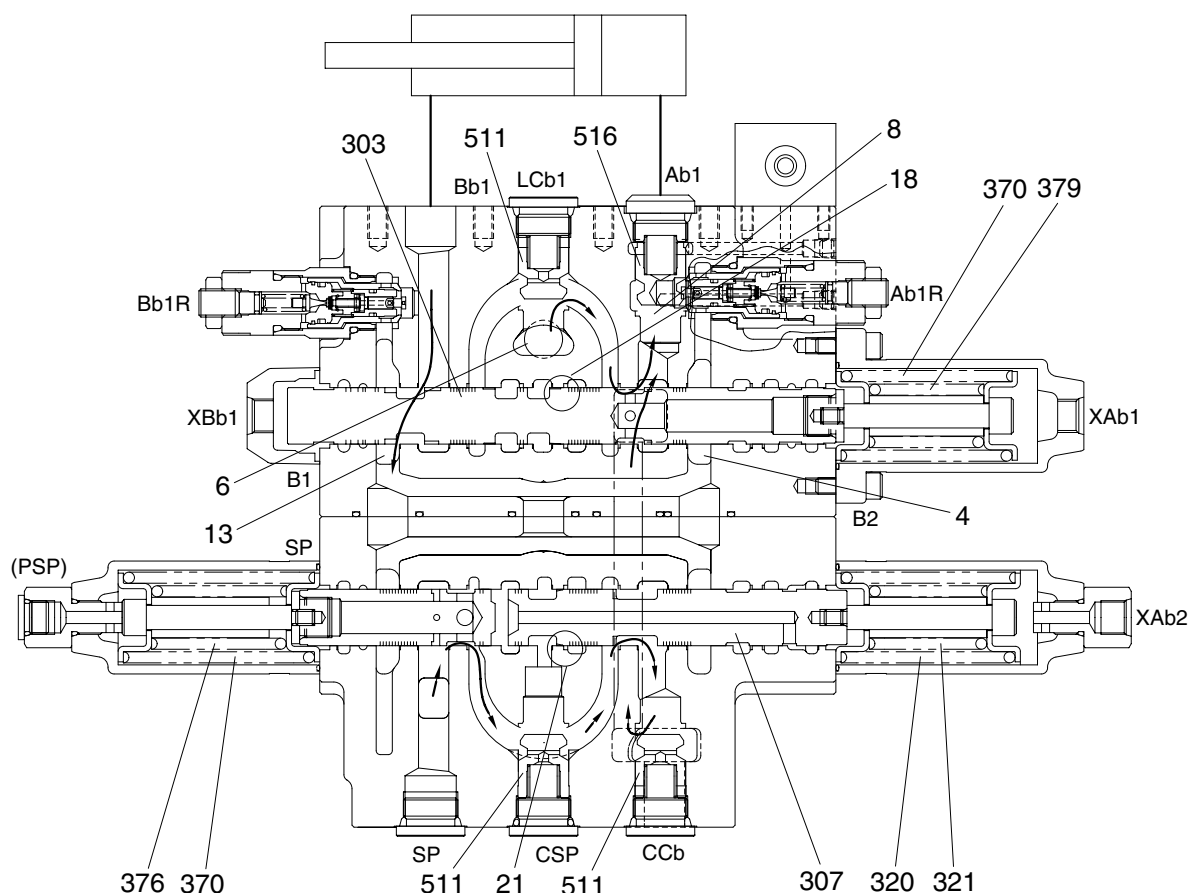
Because the discharge of the pump is adjusted by operating the pilot control lever slightly, the precise moving of the actuator is realized.

For the pump A1 (28) the same negative control principle of operation occurs utilizing the orifice (9).

3) EACH SPOOL OPERATION

(1) Boom control

① Boom up operation



20W7A2MC33

The main boom up operation becomes fast because the hydraulic fluid from the pump A2 that is directed to the port P2 is combined in the casing that of the pump A1 which enters port P1. The confluence flow is supplied to the head side of the boom cylinder. In low speed operation, only the boom 1 spool (303) operates and is supplied with hydraulic fluid from the pump A2.

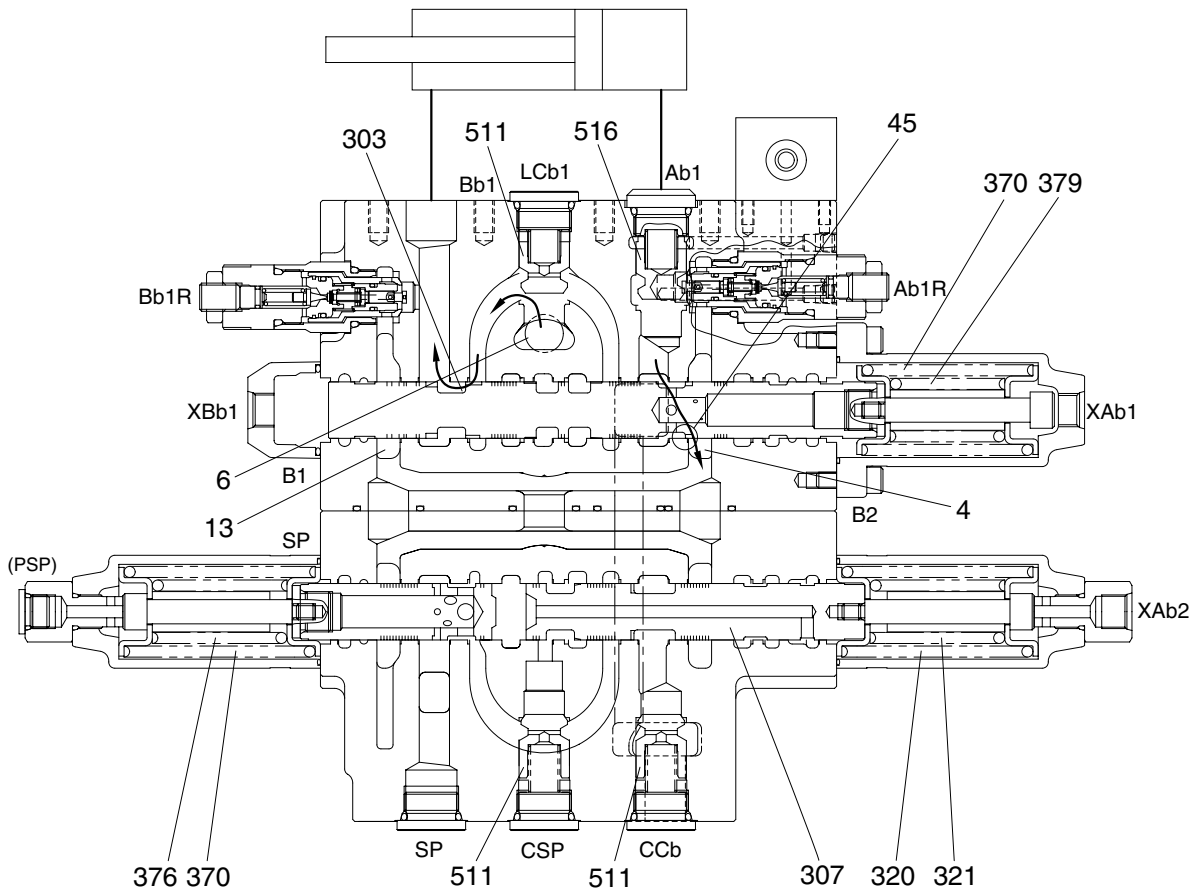
The hydraulic fluid from the pump A2 flows into the boom1 spool (303) through port P2 and parallel path (6). The hydraulic fluid from the pump A1 flows to the boom 2 spool (307) through pump port A1 and the parallel path (22).

During the boom up operation, the pilot pressure from the pilot control valve is supplied into the port XAb1 and shifts the boom 1 spool (303) in the left direction against the springs (370) and (379). the hydraulic fluid from the pump A2 enters the parallel path (6) and then passes through the load check valve LCb1 (511) and boom 1 spool (303) and check valve HV (516) then flows into the port Ab1. Following this it flows into the head side of the boom cylinder.

At the same time, the pilot pressure through the port XAb2 shifts the boom 2 spool (307) in the left direction against the springs (320) and (321). The hydraulic fluid from the pump A1 enters via the parallel path (22) and center bypass (21), then passes through the load check valve CSP (511), boom 2 spool (307) and the load check valve CCb (511). Then flows combine in path (8) and are directed to port Ab1 and the head side of the boom cylinder.

The flow from the rod side of the boom cylinder returns to the boom 1 spool (303) through the port Bb1. Thereafter it is directed to the return port R2 through path (13).

② Boom down operation



20W7A2MC34

During the boom lowering operation, the pilot pressure from the pilot control valve is supplied to port XBb1 and PbL and shifts the boom1 spool (303) in the right direction against the springs (370) and (379).

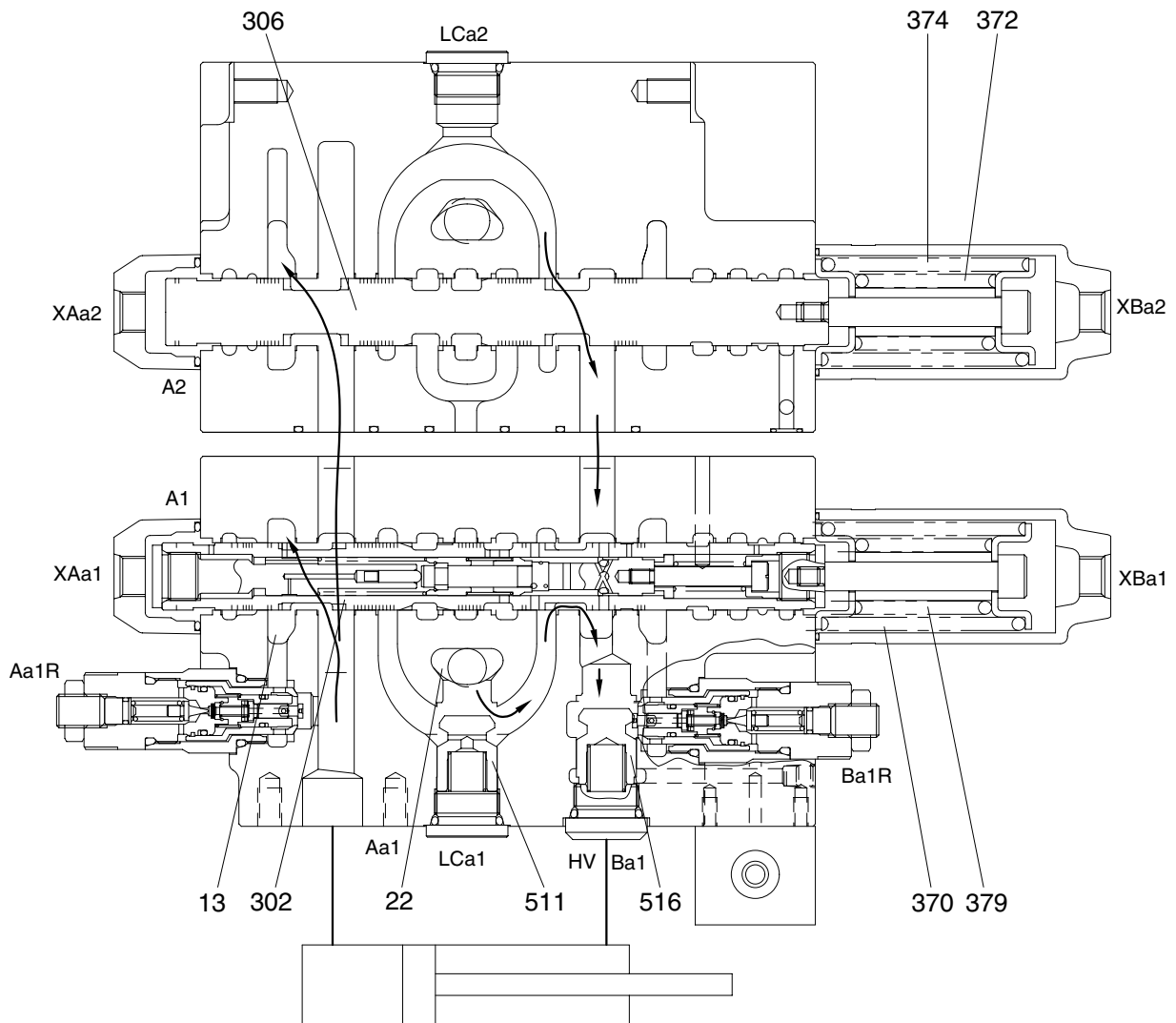
The hydraulic fluid from the pump A2 enters the parallel path (6) and is directed to the port Bb1 through the load check valve LCb1 (511). Following this is flows into the rod side of the boom cylinder.

The return flow from the head side of the boom cylinder returns to the boom 1 spool (303) through the port Ab1. Thereafter it is directed to the return port R2 through path (4).

Additionally, the return flow is restricted in path (45), which lowers the boom cylinder at a suitable speed.

(2) Arm control

① Arm roll out operation



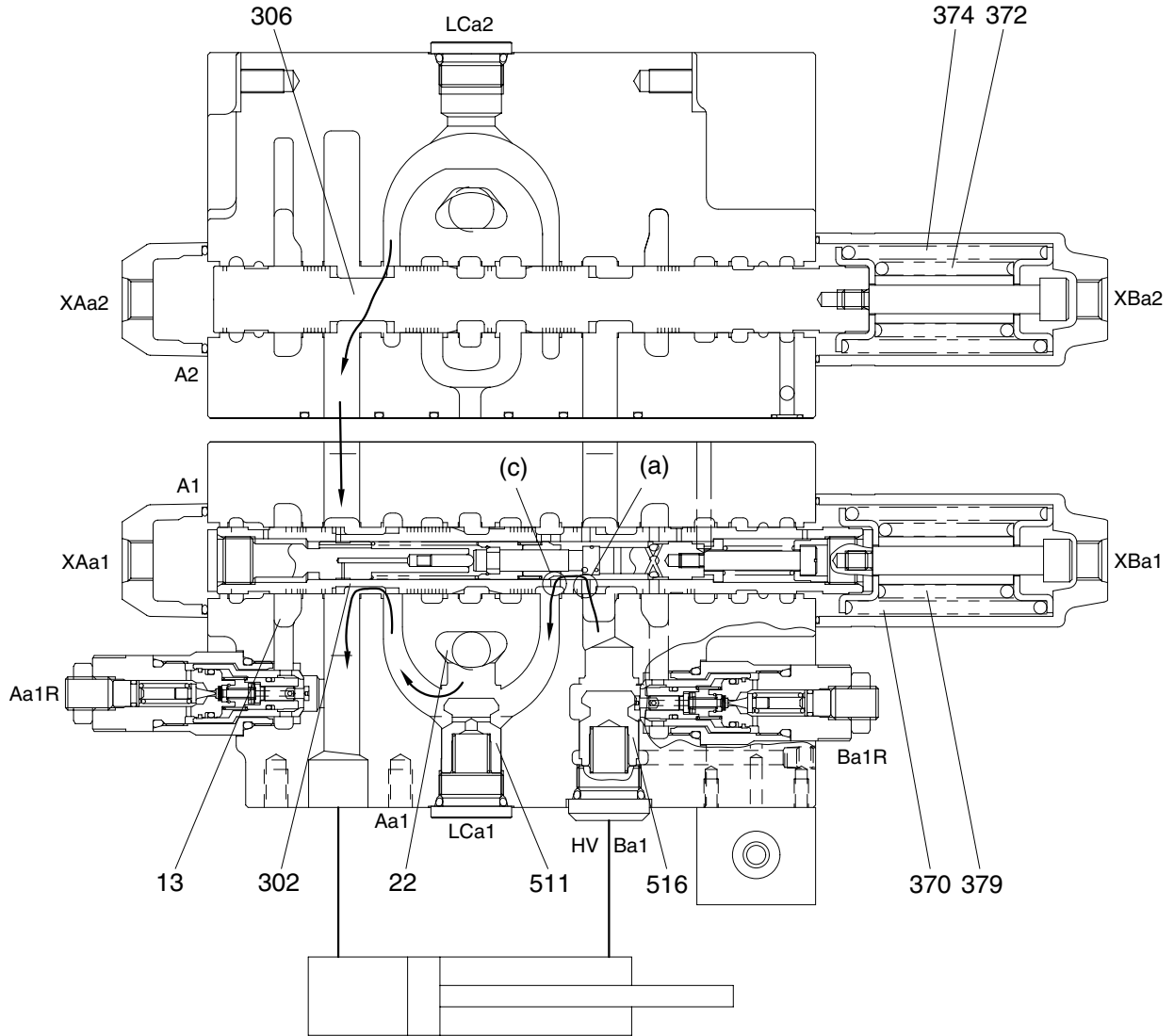
20W72MC35

During the arm roll out operation, the pilot pressure from the pilot control valve is supplied to the pilot ports (XBa1 & XBa2) and shifts the arm 1 spool (302) in the left direction against the springs (370) and (379) and shifts the arm 2 spool (306) in the left direction against the springs (374) and (372). The hydraulic fluid from the pump A1 flows through the load check valve LCa1 (511), lock valve HV (516), and then through parallel path (22). It is then directed to the rod side of the arm cylinder through the port Ba1.

At the same time, the pilot pressure through the port XBa2 shifts the arm 2 spool (306) in the left direction against the springs (374) and (372). The hydraulic fluid from the pump A2 enters via the parallel path (22) and center bypass (21), then passes through the check valve of the boom priority valve (104), arm 2 spool (306). The flows are combined and directed to port Ba1 and the rod side of the arm cylinder.

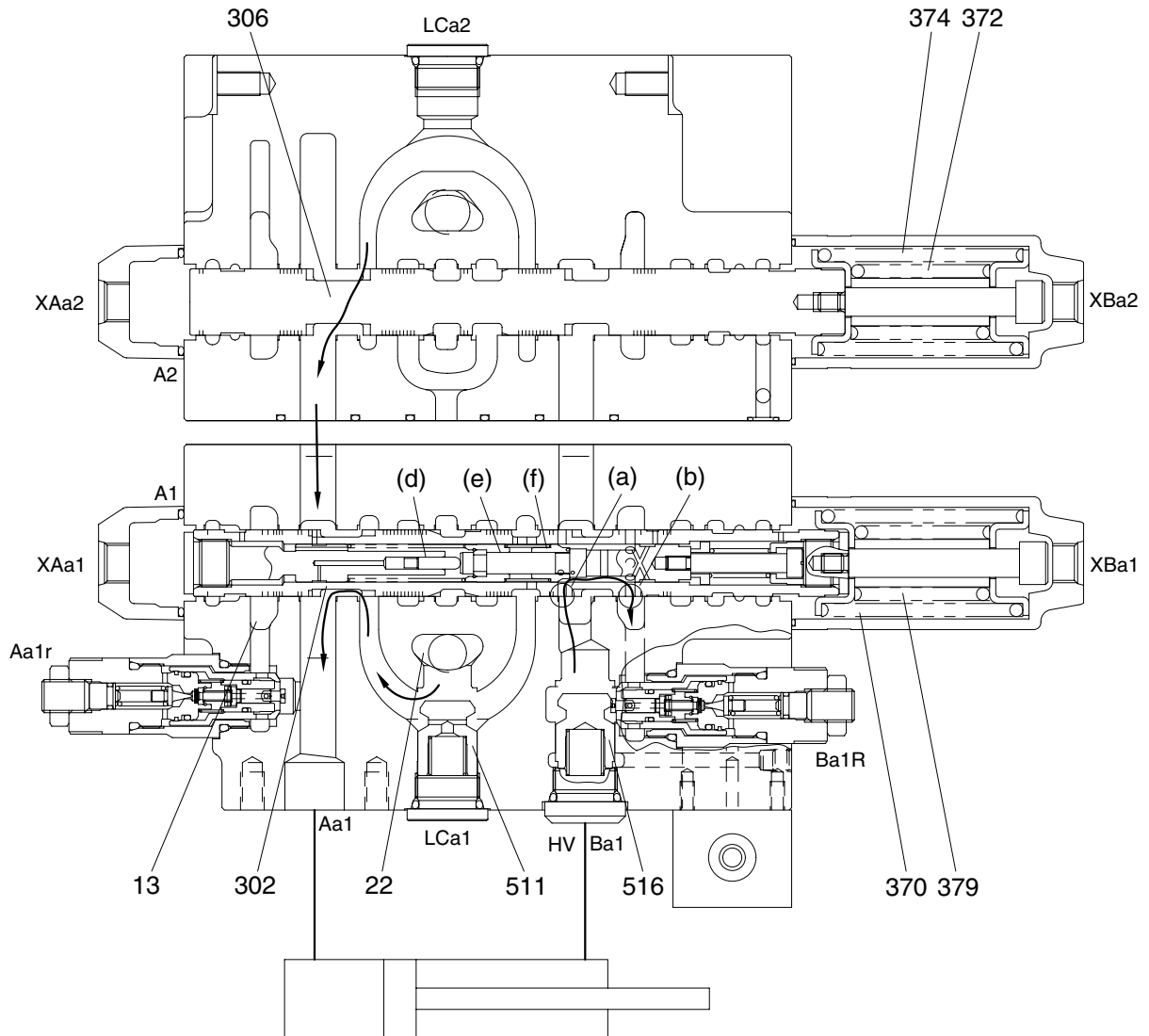
The flow from the head side of the arm cylinder returns to the arm 1 spool (302) through the port Aa1. Thereafter it is directed to the return port R2 through path (13).

② Arm roll in operation
 · During light load only



20W72MC36

• The pressure in the arm cylinder head side increases



20W72MC37

During the arm roll in operation, the pilot pressure from the pilot control valve is supplied to the ports XAa1, XAa2 and PaL and shifts the arm 1 spool (302) in the right direction against the springs (370) and (379) and shifts the arm 2 spool (306) in the right direction against the springs (374) and (372).

During the arm roll in operation, the hydraulic fluid from the pump A1 flows into the arm 1 spool (302) through the parallel path (22). Then it enters into the head side of the arm cylinder through the load check valve LCa1 (511), check valve HV (516) and port Aa1.

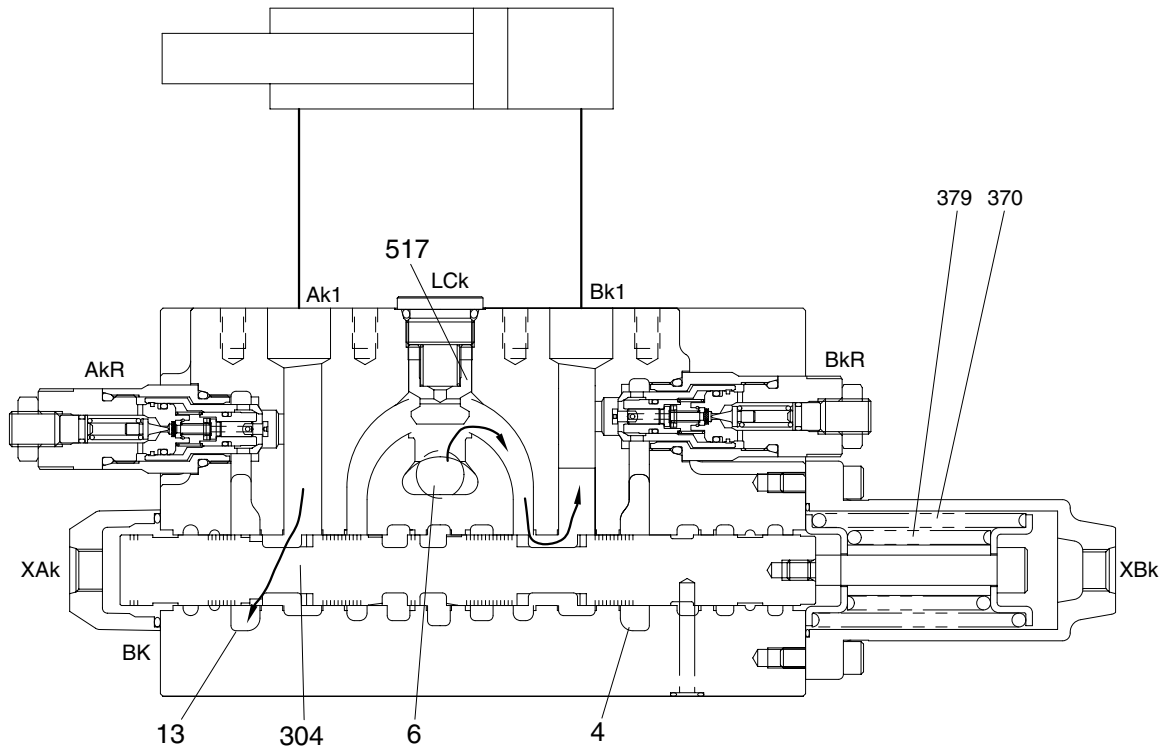
At the same time, the hydraulic fluid from the pump A2 flows into the arm 2 spool (306) through the parallel path (22). Then it enters into the head side of the arm cylinder through the check valve of boom priority valve (104) and port Aa1.

The return flow from the rod side of the arm cylinder is pressurized by self-weight of arms and so on, and returns to port Ba1. The pressurized oil returning to port Ba1 enters into the arm 1 spool through the outside of the arm 1 spool. During a light load only, it pushes open the sleeve check valve, flows the parallel path reversely from spool hole (c), and joints into port Aa1. This is called the arm regeneration function.

When the pressure in the arm cylinder head side increases, the piston (d) and sub spool (e) are transferred in the right direction, and at the same time the sleeve check valve (f) is from the arm cylinder rod side enters flow port Ba1 through the periphery hole (a) of the arm 1 spool into the spool, flows out through the periphery hole (b) of the spool, and returns through the tank port R2 to the hydraulic oil tank.

(3) Bucket control

① Bucket roll in operation

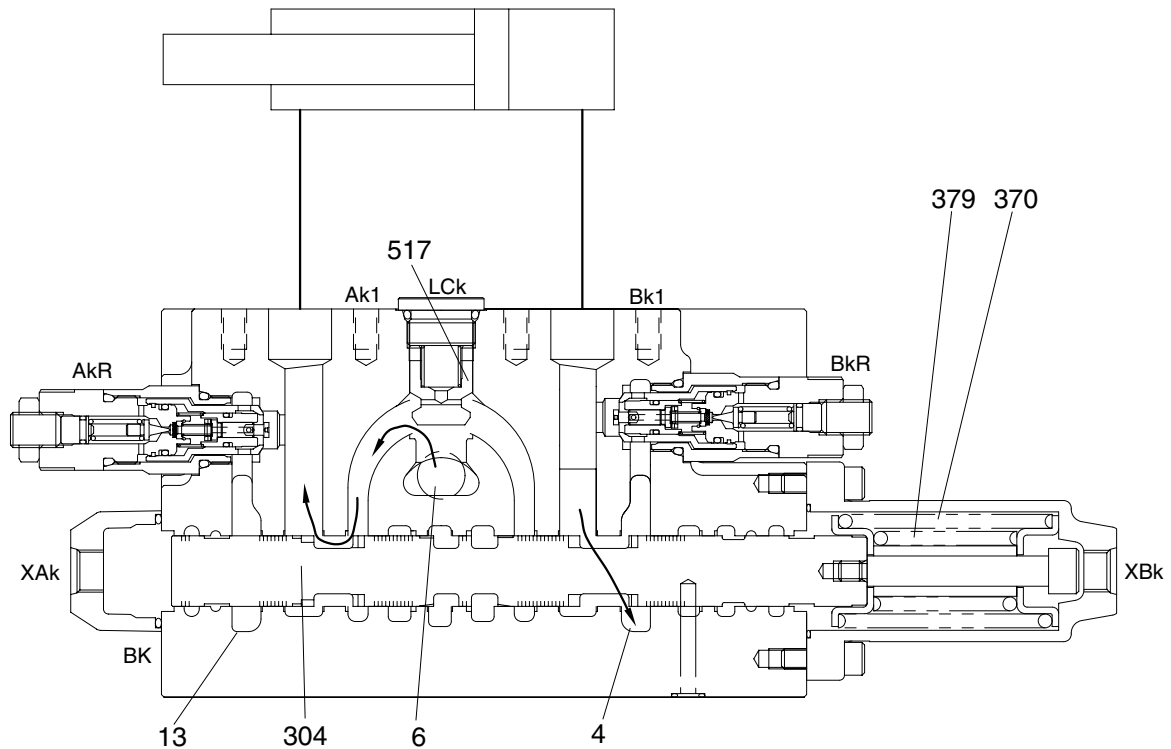


20W72MC38

During the bucket roll in operation, the pilot pressure from the pilot control valve is supplied to port XBk and shifts the bucket spool (304) in the left direction against the springs (370) and (379). The hydraulic fluid from the pump A2 enters the parallel path (6) and is directed to the port Bk1 through the load check valve LCk (517). Following this it flows into the head side of the bucket cylinder.

The return flow from the rod side of the bucket cylinder returns to the bucket spool (304) through the port Ak1. Thereafter it is directed to the return port R2 through path (13).

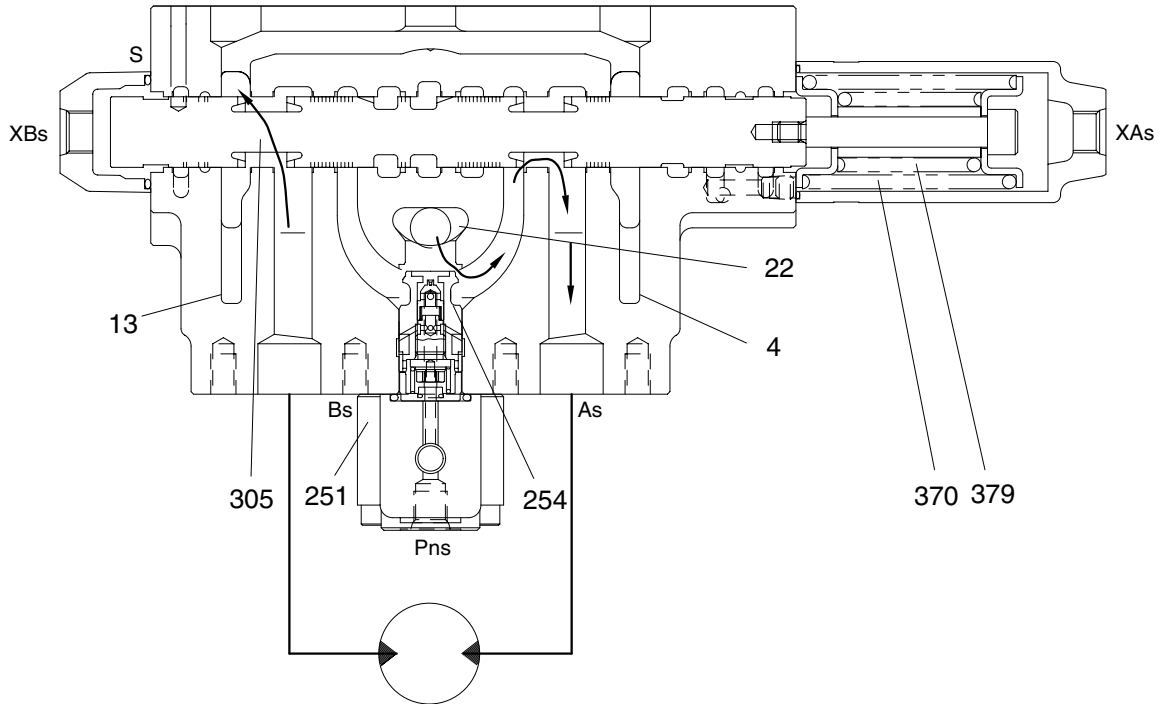
② Bucket out operation



20W72MC39.

During the bucket roll out operation, the pilot pressure from the pilot control valve is supplied to port XAk and shifts the bucket spool (304) in the right directed against the springs (370) and (379). The hydraulic fluid from the pump A2 enters the parallel path (6) and is directed to the port AK1 through the load check valve LCK (517). Following this it flows into the rod side of the bucket cylinder. The return flow from the head side of the bucket cylinder returns to the bucket spool (304) through the port Bk1. Thereafter it is directed to the return port R2 through path (4).

(4) Swing control

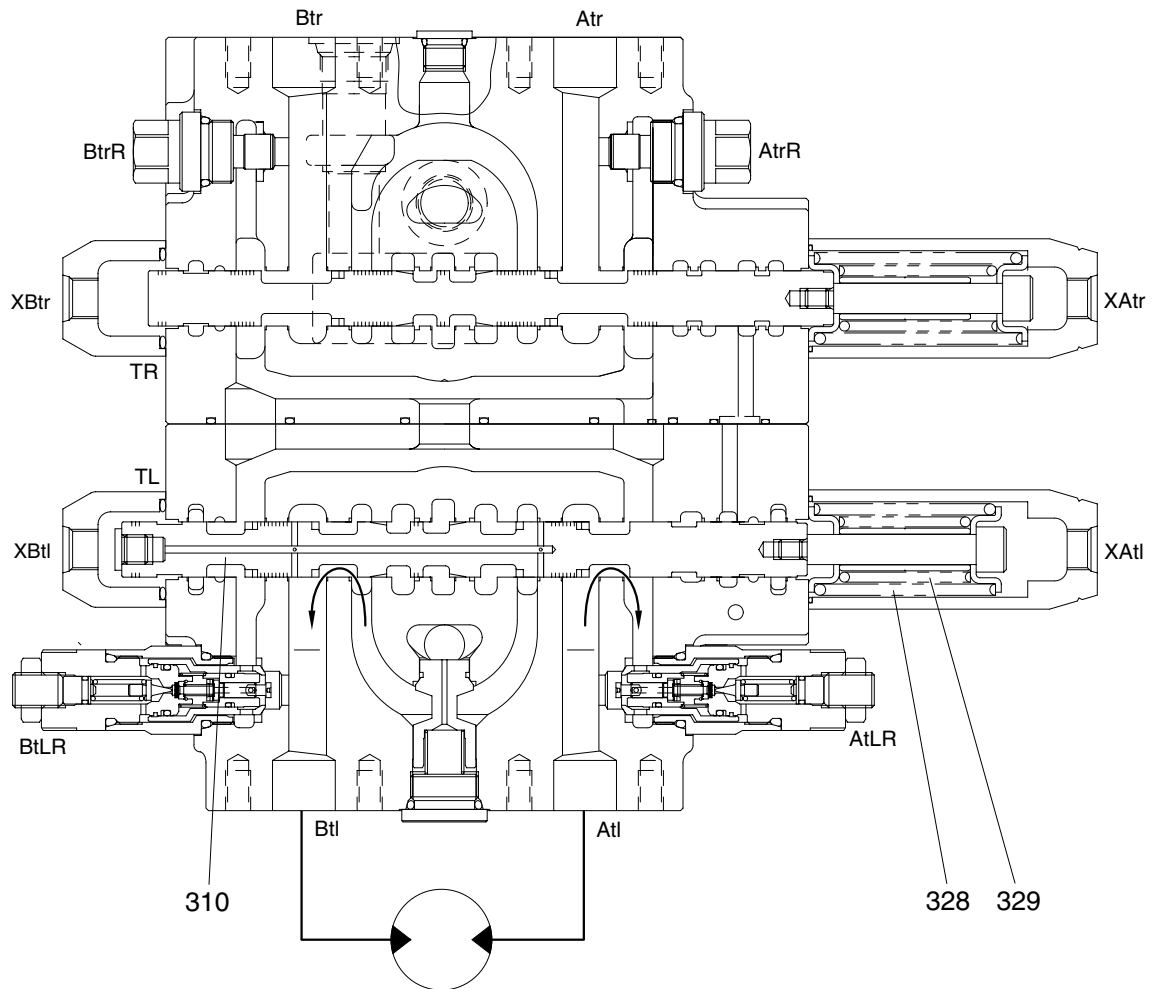


21072MC40

During the swing right or left operation, only the hydraulic fluid of the pump A1 is supplied to the swing motor.

The pilot pressure from the pilot control valve is supplied to the port XAs and shifts the swing spool (305) in the left direction against springs (370) and (379). Hydraulic fluid from the pump A1 flows into the swing spool (305) through the parallel path (22). Then it is directed to the swing motor through the check valve LCs (254) and the port As. As a result, the swing motor turns and the return flow from the swing motor enters port Bs. The flow from the motor returns to the tank port R2 through the swing spool (305) and path (13). In the case of the opposite operation, the operation is similar.

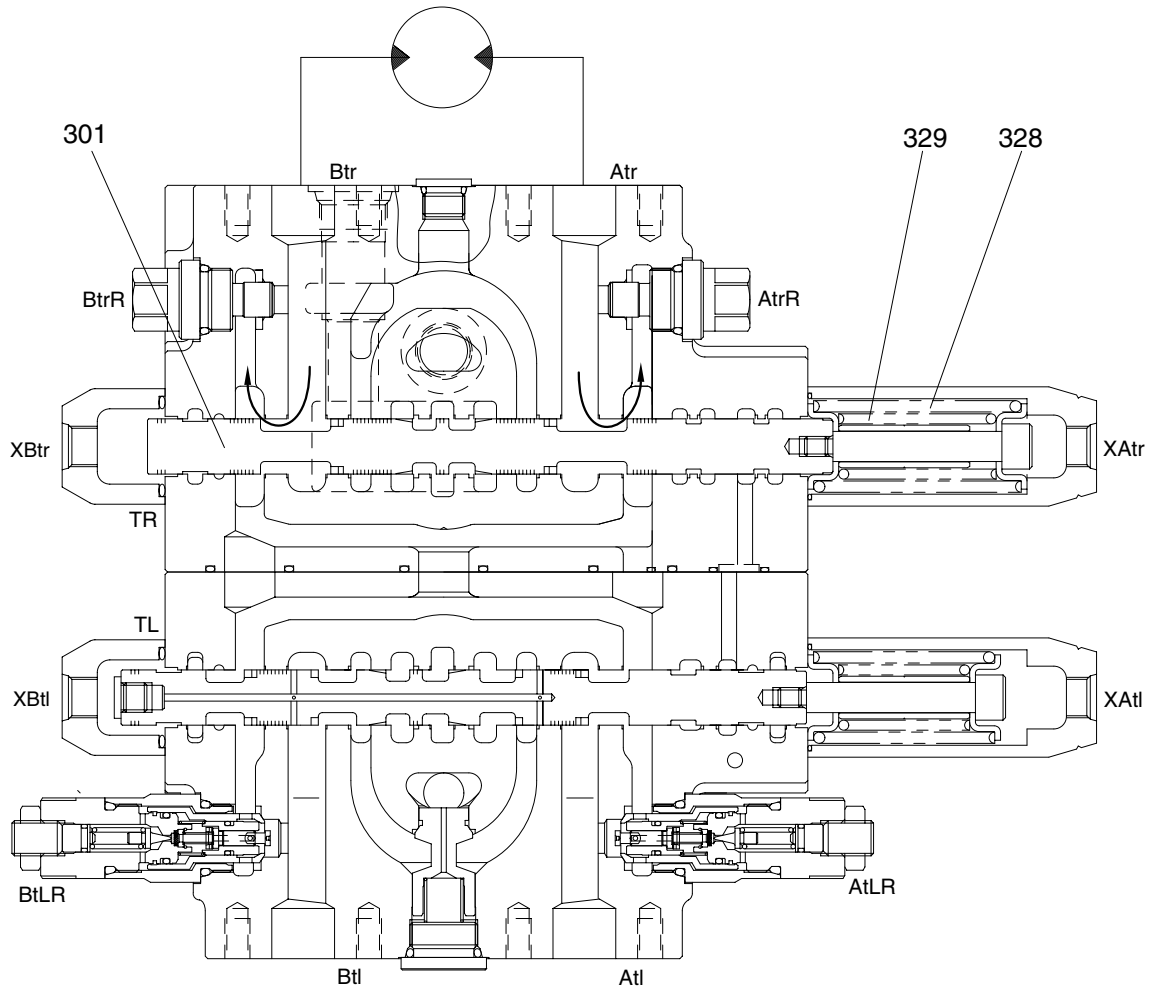
(5) Travel operation



20W72MC41

When pilot port XAtl of the travel spool (310) is pressurized, the bypass circuit (2) in the arm 1 side is shut off and pressurized oil from port A1 passes through port Atl and flows to the travel motor. On the other hand, the return oil from the travel motor passes through port Btl and returns to the hydraulic oil tank through the tank port (R2).

(6) Dozer operation



20W72MC43

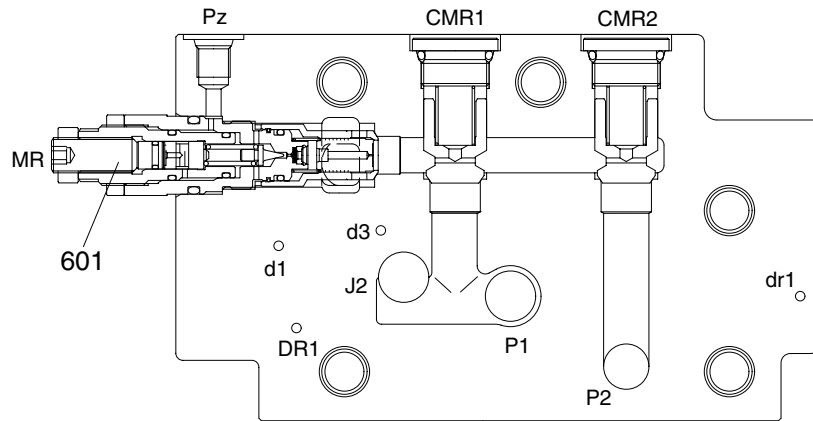
When pilot port XAtr (or XBtr) of the dozer spool (301) is pressurized, the bypass circuit (2) in the boom 1 side is shut off and pressurized oil from port A2 passes through port Atr (or Btr) and flows to the dozer cylinder. On the other hand, the return oil from the dozer cylinder passes through port Btr (or Atr) and returns to the hydraulic oil tank through the tank port (R2).

4) CIRCUIT PRESSURE PROTECTION

The control valve has two kinds of relief valve to limit the pressure in a circuit.

(1) Main relief valve

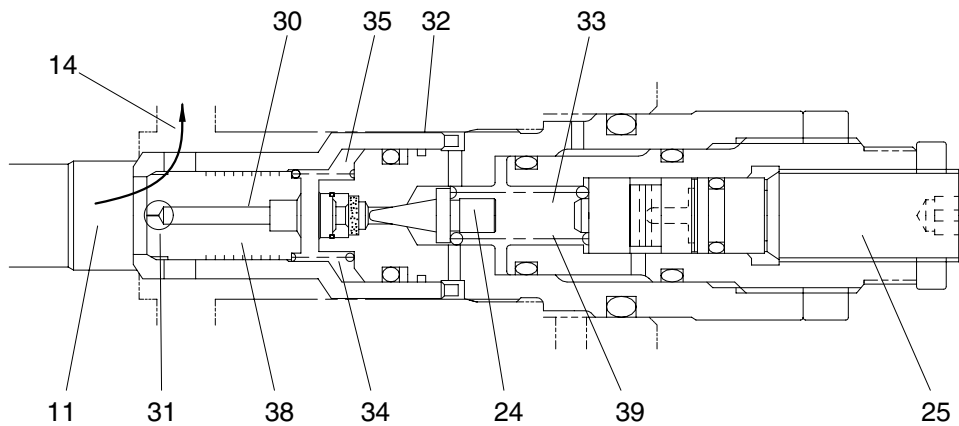
Limits the pressure of the main hydraulic system.



20W72MC42

The hydraulic fluid from the pump A1 and the pump A2 enters the control valve through ports P1 and P2, respectively. From here the flow is directed to the main relief valve (601) through the check valve CMR1 or CMR2 (511) and path (11). The pressure in path (11) is limited by the main relief valve (601) to its set pressure.

Main relief operation while working

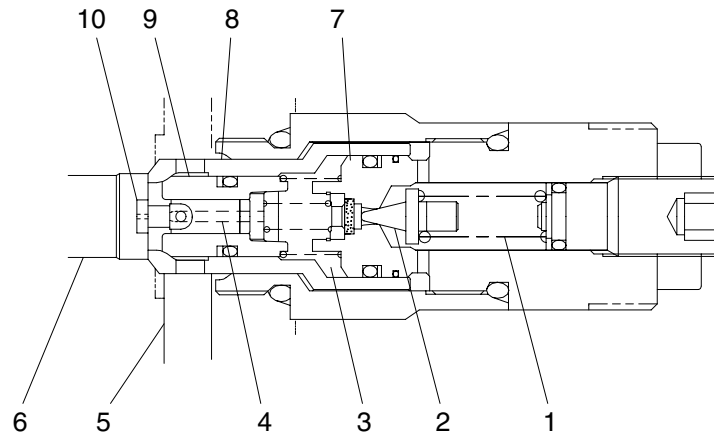


21072MC43

While the pressure in path (11) is lower than the set pressure of main relief valve (601), the poppet (24) is seated and the hydraulic fluid in path (11) can not escape to the return (14). When the pressure in path (11) approaches the pressure setting, poppet (24) opens against the spring (39). As the flow in chamber (33) escapes into the return (14) through path (32), its pressure decreases. At the same time, hydraulic fluid in path (11) flows into path (30) with a pressure drop across orifice (31). Then pressure in spring chamber (35) becomes lower because it bleeds off through path (30). The pressure from path (11) pushes the plunger (38) in the left direction against the spring (34). Then plunger (38) opens and hydraulic fluid in path (11) escapes into the return (14) and maintains the pressure setting. The pressure setting is adjusted with adjustment screw (25).

(2) Port relief valve

Limits the service pressure in a cylinder circuit.



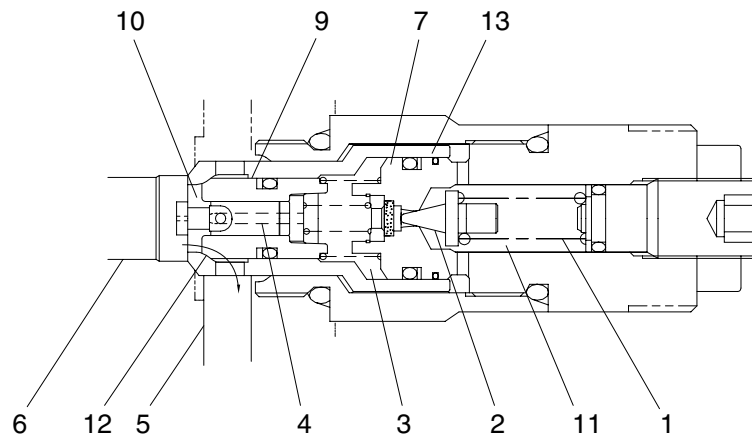
21072MC44

Port relief valves and make up valves are fitted between the cylinders of the working devices (Boom, arm, bucket) and their spools. In the case of an external force acting on the cylinder rod with its spool in neutral, the pressure in the cylinder could become excessive. The port relief valve (602) restricts this pressure to the set pressure of the valve.

Port relief valve (602) have also the additional function of a make up valve. It is possible, under the influence of an external force acting on a cylinder that a condition can occur where insufficient flow is available to match cylinder velocity. If this occurs then a vacuum and thereby cavitation could exist. To eliminate such an occurrence, a make up valve operates to break this vacuum by supplying the return flow into the cylinder.

The hydraulic fluid between the cylinder and its spool flows into the path (6) to pressurize the port relief valve (602). The hydraulic fluid in the path (6) flows into the spring chamber (3) through the path (4) in the piston (10). If the pressure is lower than the pressure setting, the poppet (2) is shut off because the force of the spring (1) overcomes the pressure. So the path (6) and the spring chamber (3) have the same pressure. Because the spring chamber (3) side pressured area of the seat (8) and the plunger (9) is larger than that of the path (6) side, seat (8) and the plunger (9) are pushed in the right direction to be seated securely and then the hydraulic fluid in the path (6) doesn't escape into the return path (5).

① Port relief function

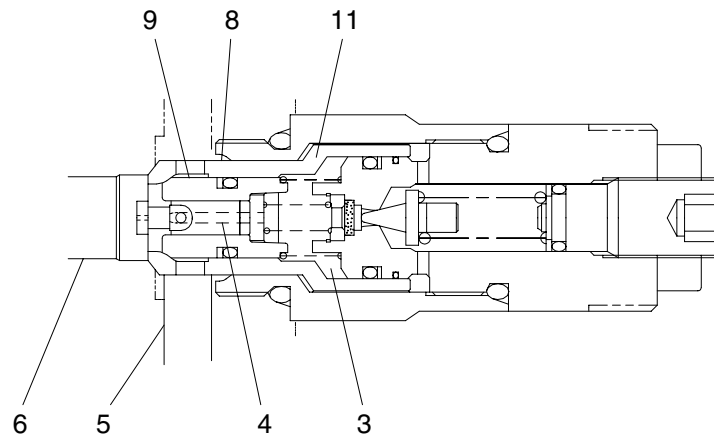


21072MC45

When the pressure in the path (6) is pressurized to the pressure setting, the poppet (2) is pushed open against the spring (1). The hydraulic fluid in the chamber (11) flows into the return path (5) through the path (13) with reducing its pressure. The piston (10) is shifted in the left direction by the pressure in the path (6) and stops on the end of the plug (7).

The hydraulic fluid in the path (6) flows into the chamber (11) through the path (4) in the piston (10) and the spring chamber (3). Because the differential pressure occurs between the pass (6) and the pass (4) by the orifice between the outernal diameter of the end of the piston (10) and the internal diameter of the plunger (9), the pressure in the spring chamber (3) becomes low and therefore the plunger (9) is pushed in the left direction with the path (12) opened so that the hydraulic fluid in the path (6) flows into the return path (5).

② Make up function



21072MC46

Following this then the case of a port relief valve operating as a make up valve is now explained. In the case that the hydraulic fluid in the cylinder rod (Head) side escapes from the port relief valve (602), then hydraulic fluid needs to be supplied because vacuum occurs in the head (Rod) side. When vacuum occurs in the side of the path (6), it also occurs in the spring chamber (3) through the path (4). The pressure in the side of the return path (5) acts on the seat (8). The seat (8) is shifted in the left direction by the return pressure because the spring chamber (3) sides of the seat (8) and the plunger (9) are under a vacuum. The hydraulic fluid in the return path (5) flows into the path (6) so as to break the vacuum in the path (6) side.

4. TROUBLESHOOTING

1) GENERAL COMMENTS

- (1) When any abnormal phenomenon is noticed, investigate whether it is a failure of the control valve itself or a problem in the pump proper, pilot pump or circuit.
For this purpose, the pilot pressure, pump discharge pressure, load pressure, etc. should be measured. Additionally, even when partial disassembly and checking is carried out, follow the previously mentioned disassembly and assembly procedures.
- (2) Since dust is very harmful to hydraulic components, pay full attention to dust prevention. Even for partial disassembly dust prevention measures should be carried out.
- (3) Handle movable parts carefully. Even for a small damage, correction using an oilstone should be carried out.
- (4) Carefully carry out your investigation, paying due attention not to damage the sealing faces of O-rings. Such damage will cause both internal and external oil leakage.

2) TROUBLESHOOTING

Phenomenon	Possible cause	Remedy
Machine cannot travel or swing or functions poorly at low speed (Insufficient force) or generally responds slowly.	<ul style="list-style-type: none"> • Main relief valve malfunctions. <ul style="list-style-type: none"> - Dirt is jammed between main plunger and seat. - Dirt is jammed between poppet and seat. - Main plunger is stuck. - Spring is broken or fatigued. - Restriction in main plunger is clogged. - Adjusting screw is loose. • Orifice just before control valve in pilot line is clogged. 	<ul style="list-style-type: none"> • Measure pressure of main relief valve. <ul style="list-style-type: none"> - Disassemble valve and clean parts. Replace assembly, if damaged severely. - Same as above. - Correct stuck section with oilstone. - Remove spring. - Remove dirt. - Readjust it and tighten locknut to specified torque. • Remove dirt.
Cylinder falls significantly under its own weight when the spool is in neutral.	<ul style="list-style-type: none"> • Clearance between spool and casing is excessive. • Spool does not return to correct neutral position. <ul style="list-style-type: none"> - Dirt is jammed between casing and spool, or casing and spool are stuck together. - Spring is broken or fatigued. - Pilot line is clogged with dirt. • Main relief valve malfunctions. • Port relief valve malfunctions. • Lock valve assembly malfunctions. • Lockvalve poppet malfunctions <ul style="list-style-type: none"> - Dirt is jammed between poppet and casing. - Poppet is stuck. - Spring is broken or fatigued. 	<ul style="list-style-type: none"> • Replace spool. • Measure secondary pilot pressure. <ul style="list-style-type: none"> - Disassemble valve and clean parts. Correct stuck section with oilstone. - Replace spring. - Remove dirt. • Measure pressure of main relief valve. • Measure pressure of main relief valve. • Replace lock valve assembly. - Disassemble poppet and clean parts - Correct stuck section with oilstone. - Replace spring.

2) CONTROL VALVE TROUBLE SHOOTING

Phenomenon	Possible cause	Remedy
When pilot control lever is operated for cylinder hoisting, the cylinder initially falls.	<ul style="list-style-type: none"> · Load check valve malfunctions <ul style="list-style-type: none"> - Dirt is jammed between poppet and casing. - Poppet is stuck. - Spring is broken or fatigued. 	<ul style="list-style-type: none"> - Disassemble poppet and clean parts - Correct stuck section with oilstone. - Replace spring.
Bucket, boom and arm only do not work. Action is slow (Insufficient force) or response is slow.	<ul style="list-style-type: none"> · Main spool malfunctions. <ul style="list-style-type: none"> - Clearance between casing and spool is excessive. - Dirt is jammed between casing and spool. - Spool is stuck. - Return spring is broken or fatigued. - Pilot line is clogged with dirt. · Main relief valve malfunctions. · Port relief valve malfunctions. 	<ul style="list-style-type: none"> · Disassemble poppet and clean parts - Replace spool. - Disassemble valve and clean parts. - Correct stuck section with oilstone. - Replace spring. - Remove dirt. · Measure pressure of main relief valve. · Measure pressure of main relief valve.
Main boom and arm confluence does not function.	<ul style="list-style-type: none"> · Each confluence valve malfunctions. <ul style="list-style-type: none"> - Spool is stuck. - Spring is broken or fatigued. - Clearances between casing A and casing B and spool are excessive. 	<ul style="list-style-type: none"> · Measure pilot pressure. - Correct stuck section with oilstone. - Replace spring. - Replace spool.
Negative control does not function and minimum flow cannot be obtained when lever is in neutral.	<ul style="list-style-type: none"> · Low pressure relief valve malfunctions. <ul style="list-style-type: none"> - Dirt is jammed between poppet and casing. - Spring is broken or fatigued. - Restriction in poppet is clogged. 	<ul style="list-style-type: none"> · Measure pressure of low pressure relief valve. - Disassemble valve and clean parts. Replace assembly, if damaged severely. - Replace spring. - Disassemble valve and clean parts. Remove dirt.

3) RELIEF VALVE TROUBLE SHOOTING

Phenomenon	Possible cause	Remedy
Pressure does not rise at all.	<ul style="list-style-type: none"> · Main plunger or pilot poppet in relief valve is stuck or remains open, or dirt is jammed in the seat of valve. 	<ul style="list-style-type: none"> · Check for dirt that is jammed in the seat of the valve. Check if parts slide freely. Clean all parts thoroughly.
Relief pressure is unstable.	<ul style="list-style-type: none"> · Pilot poppet in relief valve is scored. 	<ul style="list-style-type: none"> · Replace scored parts. Clean all parts. Remove score on surface.
Relief pressure is not correct.	<ul style="list-style-type: none"> · Wear due to dirt. · Locknut and adjusting screw are loose. 	<ul style="list-style-type: none"> · Disassemble valve and clean parts. · Adjust pressure.
Oil leakage	<ul style="list-style-type: none"> · Seat is scored. O-ring is worn. · Parts are stuck with dirt. 	<ul style="list-style-type: none"> · Replace scored or worn parts. Check that all parts move smoothly, before reassembling them. · Check them for scratch, notch or dirt, before reassembling them.

4) MAIN CONTROL VALVE

Phenomenon	Possible cause	Remedy
Casing	<ul style="list-style-type: none"> Existence of scratches, rusting or corrosion. 	<ul style="list-style-type: none"> In case of damage in the following areas, replace part: <ul style="list-style-type: none"> Sliding sections of casing bore and spool, especially land sections continuously seeing pressure. Seal pocket section where spool is inserted. Seal section of port where O-ring contacts. Seal section of each relief valve from main and port. Other defects that may damage normal functions.
Spool	<ul style="list-style-type: none"> Existence of scratches, fretting, rusting or corrosion. Insert each spool individually into its respective casing bore, rotate and reciprocate it. 	<ul style="list-style-type: none"> REplace if its outside sliding section has scratches or other damage. (Especially on seal contacting section) Replace if its sliding section has scratches or other damage. Correct or replace if the spool does not move smoothly.
Poppet	<ul style="list-style-type: none"> Damage of poppet or spring. Insert poppet into casing and move it. 	<ul style="list-style-type: none"> Correct or replace if sealing is incomplete. Use only if it can move smoothly without being caught.
Spring	<ul style="list-style-type: none"> Rusting, corrosion, deformation or breaking of spring, spring seat, plug or cover. 	<ul style="list-style-type: none"> Replace if there is significant damage.
Seal	<ul style="list-style-type: none"> External oil leakage. Rusting, corrosion or deformation of seal. 	<ul style="list-style-type: none"> Correct or replace. Correct or replace.
Main relief valve, port relief valve and negative control relief valve	<ul style="list-style-type: none"> External rust or damage. Contacting face of valve seat. Contacting face of poppet. Abnormal spring. O-rings, back up rings and seals. 	<ul style="list-style-type: none"> Replace Replace if damaged. Replace if damaged. Replace. 100% replacement in general.

Phenomenon	Possible cause	Remedy
<p>Machine cannot travel or swing or functions poorly at low speed(Insufficient force) or generally responds slowly.</p>	<ul style="list-style-type: none"> • Main relief valve malfunctions. - Dirt is jammed between main plunger and seat. - Dirt is jammed between poppet and seat. - Main plunger is stuck. - Spring is broken or fatigued. - Restriction in main plunger is clogged. - Adjusting screw is loose. • Orifice just before control valve in pilot line is clogged. 	<ul style="list-style-type: none"> • Measure pressure of main relief valve. - Disassemble valve and clean parts. Replace assembly, if damaged severely. - Same as above. - Correct stuck section with oilstone. - Remove spring. - Remove dirt. - Readjust it and tighten locknut to specified torque. • Remove dirt.
<p>Cylinder falls significantly under its own weight when the spool is in neutral.</p>	<ul style="list-style-type: none"> • Clearance between spool and casing is excessive. • Spool does not return to correct neutral position. - Dirt is jammed between casing and spool, or casing and spool are stuck together. - Spring is broken or fatigued. - Pilot line is clogged with dirt. • Main relief valve malfunctions. • Port relief valve malfunctions. • Lock valve assembly malfunctions. • Lockvalve poppet malfunctions <ul style="list-style-type: none"> - Dirt is jammed between poppet and casing. - Poppet is stuck. - Spring is broken or fatigued. 	<ul style="list-style-type: none"> • Replace spool. • Measure secondary pilot pressure. - Disassemble valve and clean parts. Correct stuck section with oilstone. - Replace spring. - Remove dirt. • Measure pressure of main relief valve. • Measure pressure of main relief valve. • Replace lock valve assembly. - Disassemble poppet and clean parts - Correct stuck section with oilstone. - Replace spring.