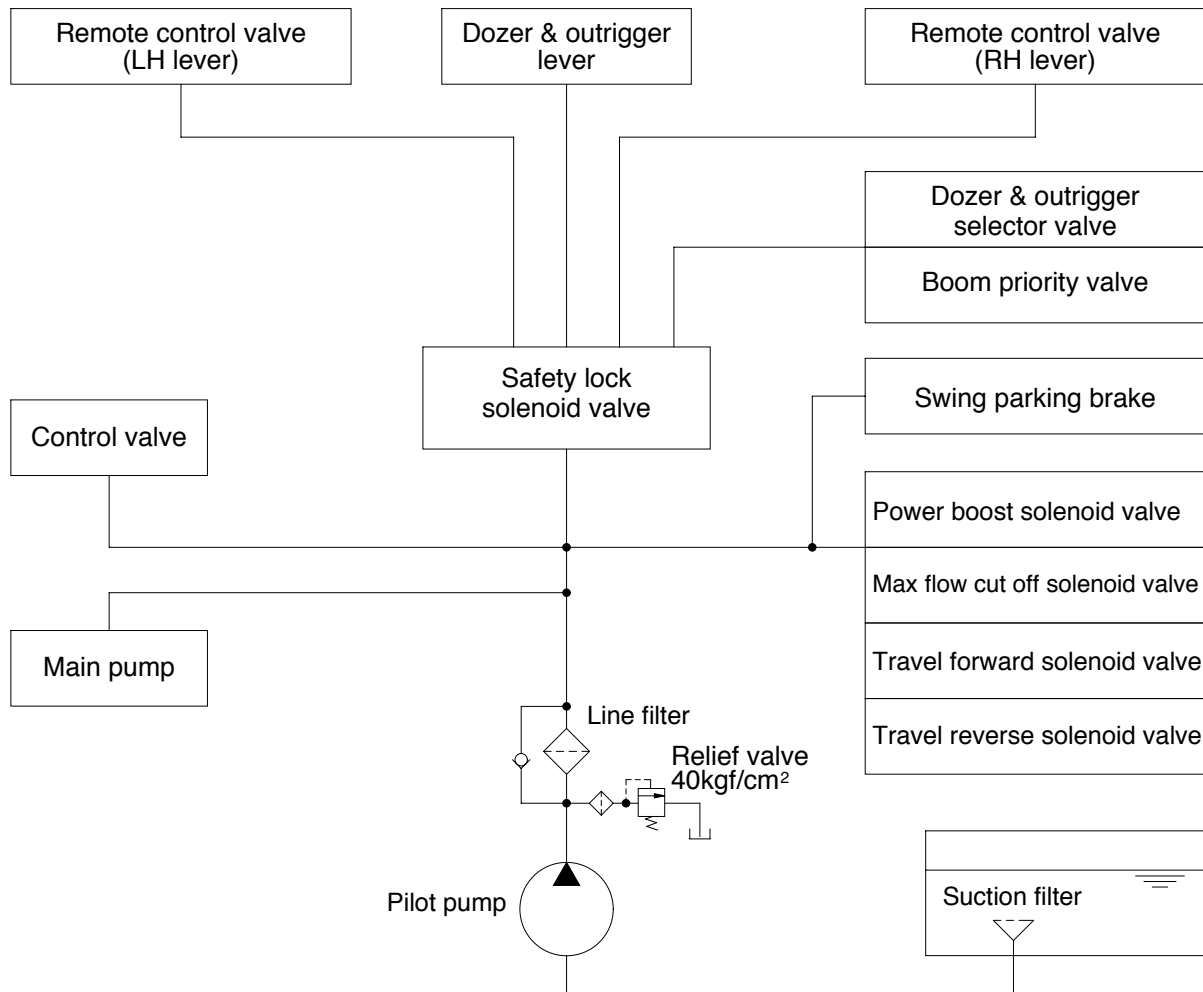


## GROUP 3 PILOT CIRCUIT



20W73CI03

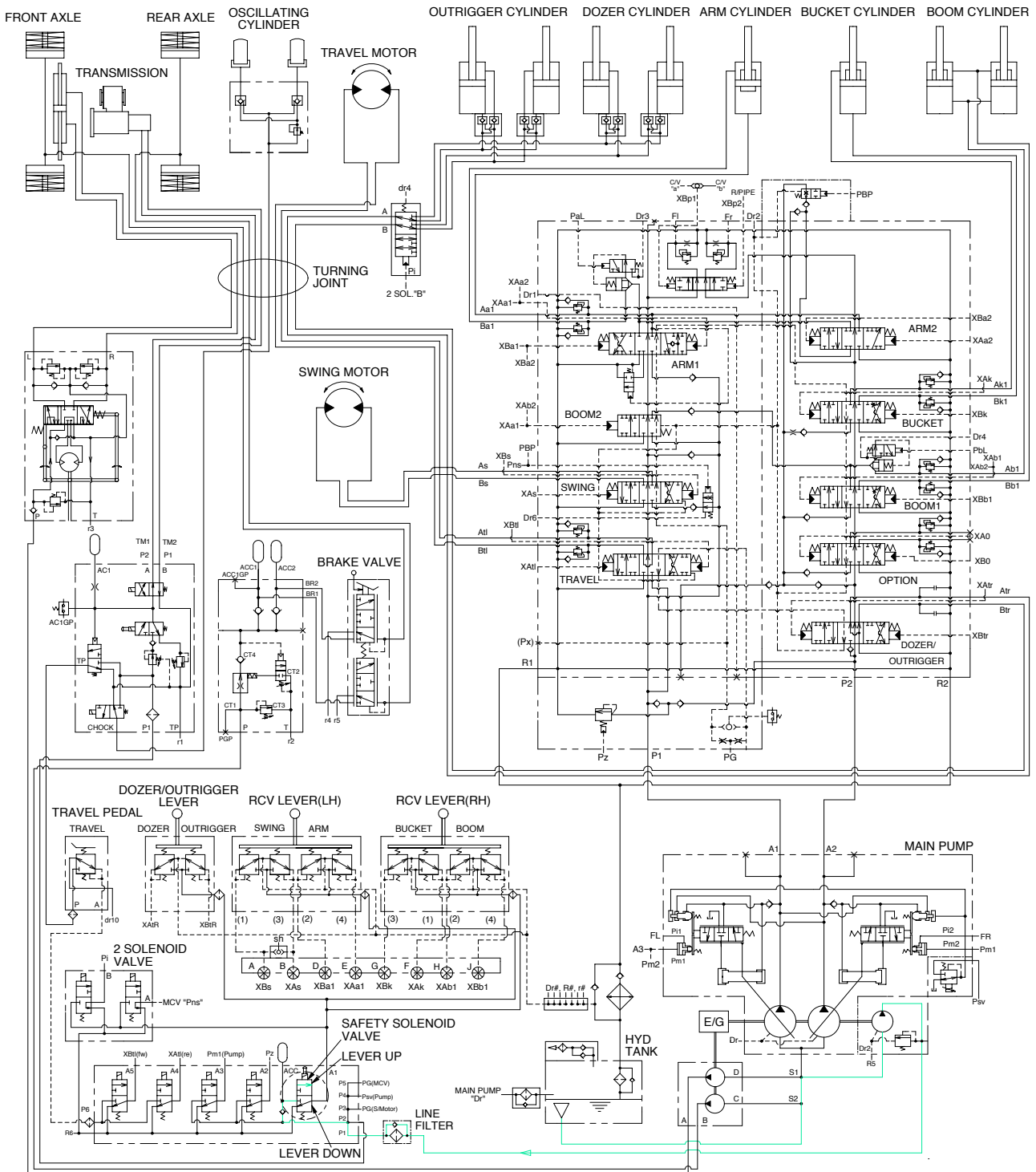
The pilot circuit consists of suction circuit, delivery circuit and return circuit.

The pilot pump is provided with relief valve, receives the oil from the hydraulic tank through the suction filter.

The discharged oil from the pilot pump flows to the remote control valve, EPPR valve, solenoid valve assemblies, swing parking brake, main control valve and safety lock solenoid valve through line filter.



## 2. SAFETY SOLENOID VALVE(SAFETY LEVER)

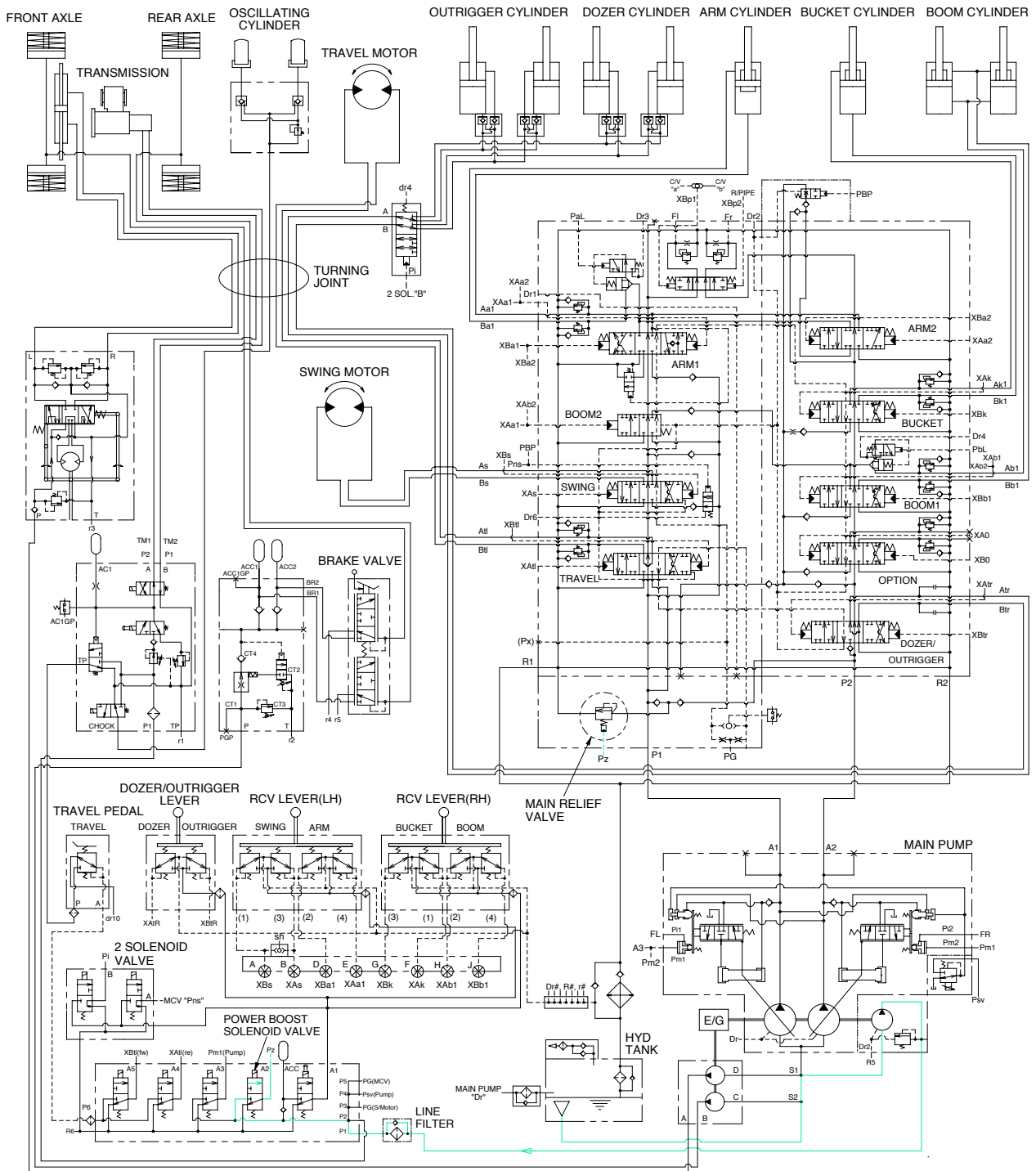


20W73HC03

When the lever of the safety solenoid valve is moved upward, oil flows into the remote control valve through solenoid valve and line filter.

When the lever of the safety solenoid valve moved downward, oil does not flows into the remote control valve, because of blocked port.

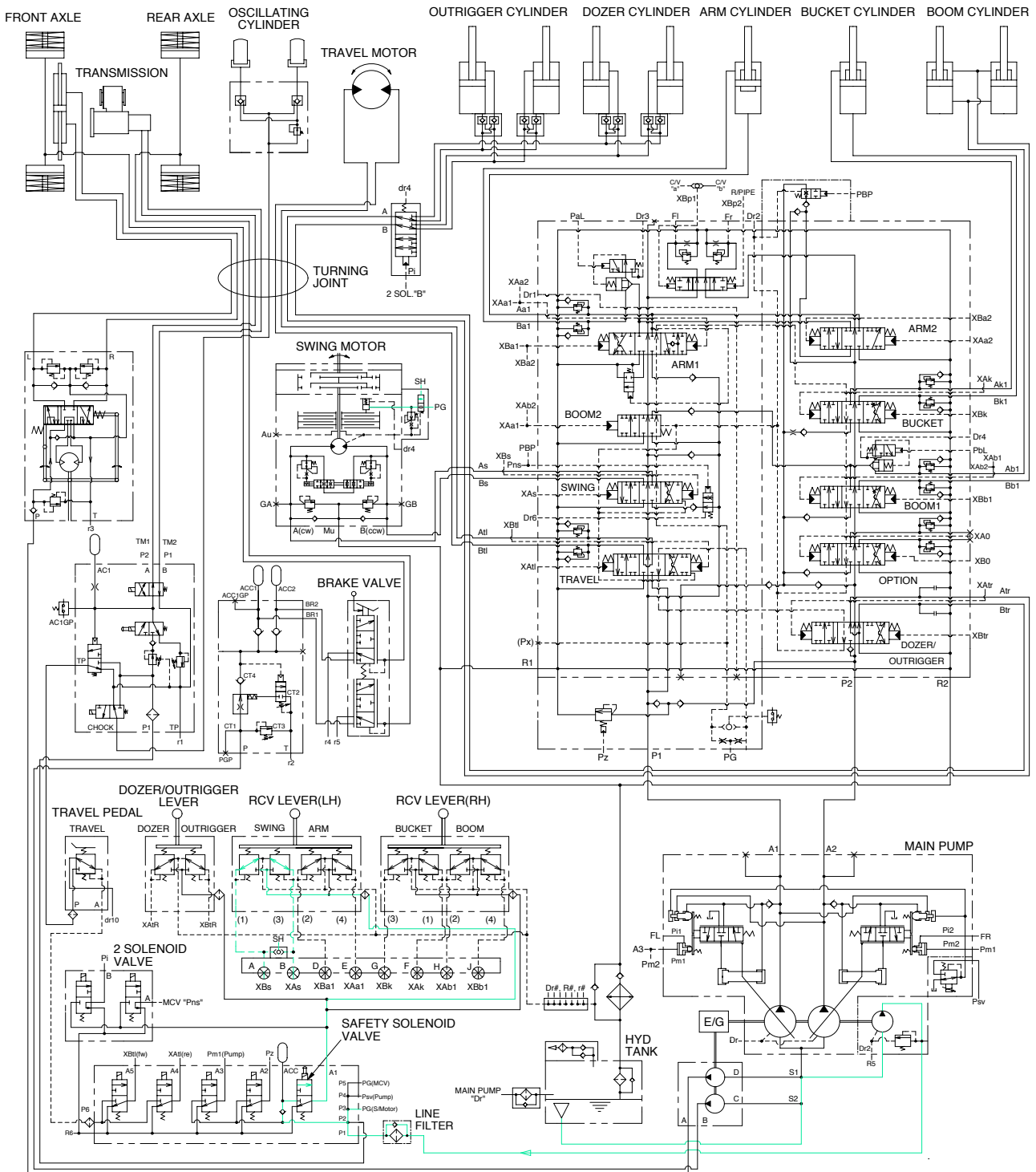
### 3. MAIN RELIEF PRESSURE CHANGE SYSTEM



20W73HC04

When the power boost switch on the left control lever is pushed ON, the power max solenoid valve is actuated, the discharged oil from the pilot pump into Pz port of the main relief valve in main control valve ; Then the setting pressure of the main relief valve is raises from 330kgf/cm<sup>2</sup> to 360kgf/cm<sup>2</sup> for increasing the digging power. And even when press continuously, it is canceled after 8 seconds.

## 4. SWING PARKING BRAKE RELEASE



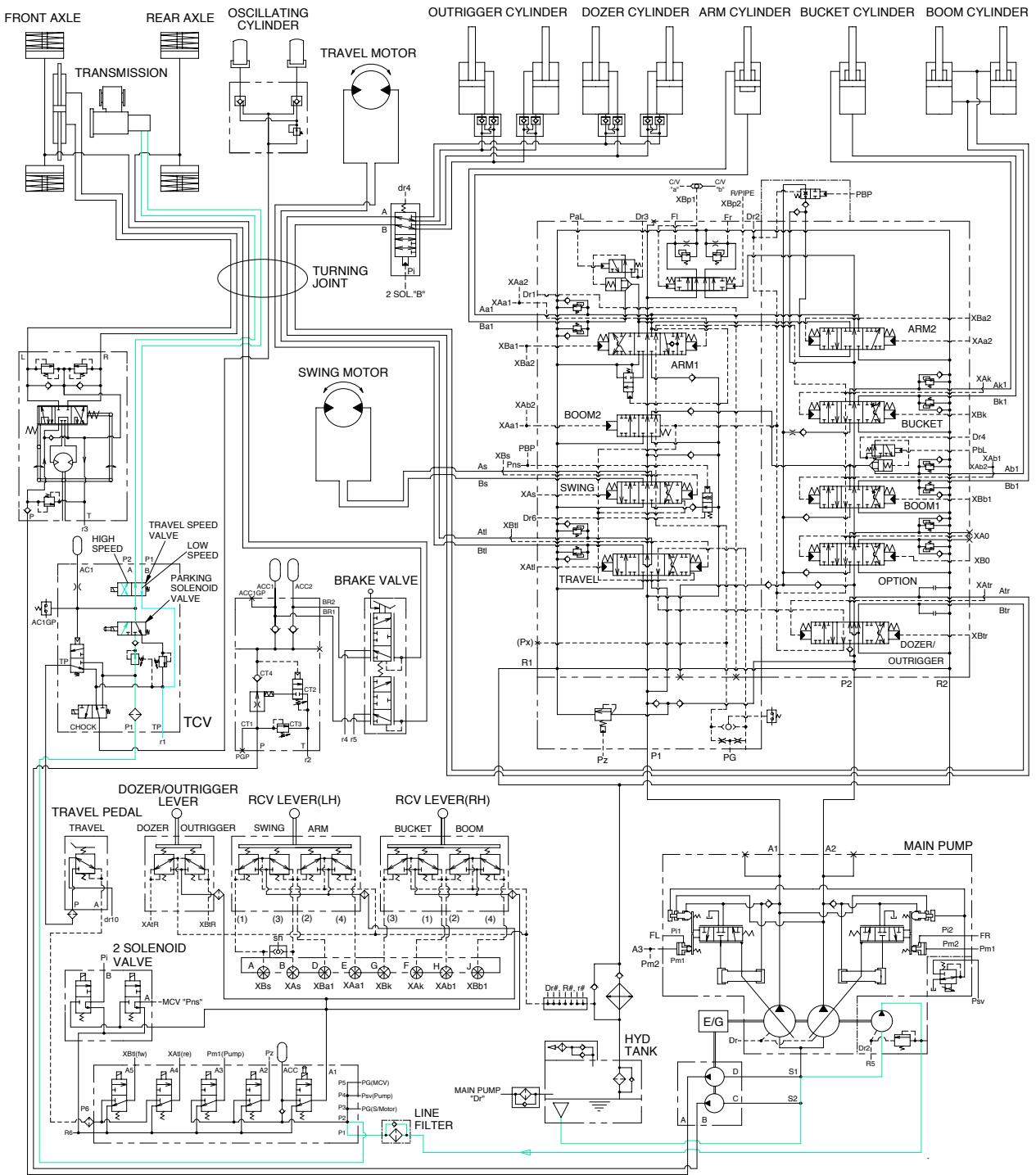
20W73HC05

When the swing control lever is operated, the pilot oil flow into SH port of shuttle valve, this pressure move spool so, discharged oil from pilot pump flow into PG port.

This pressure is applied to swing motor disc, thus the brake released.

When the swing control lever is set neutral position, oil in the swing motor disc cylinder is drain, thus the brake is applied.

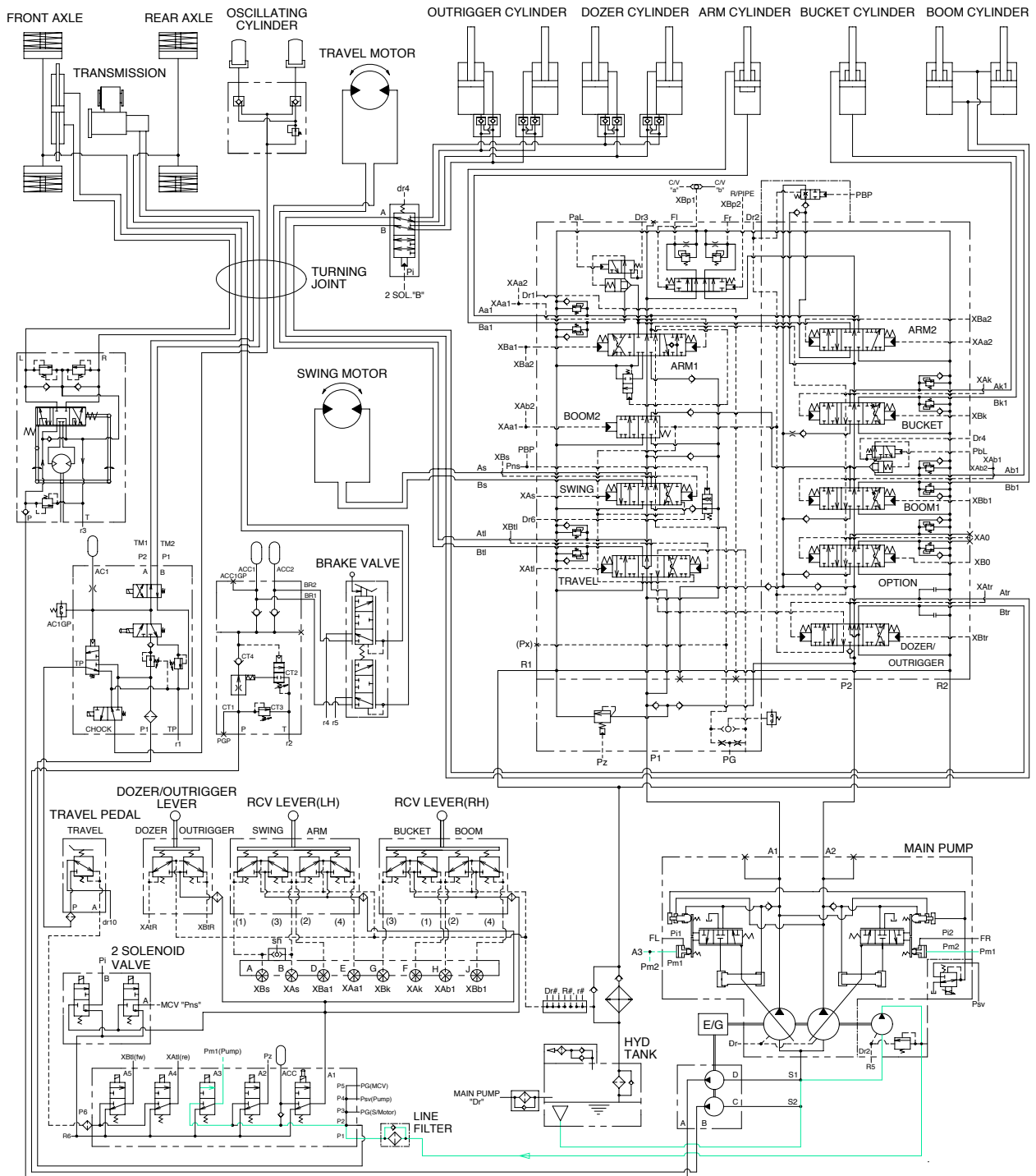
## 5. TRAVEL SPEED SELECTION SYSTEM



20W73HC06

When RH multifunction switch was placed in high or low position, the pressure oil from pilot pump flows through parking solenoid valve of transmission control valve to travel speed solenoid valve, thus the transmission is changed into high or low speed condition.

## 6. MAX FLOW CUT OFF SYSTEM



20W73HC02

When the breaker operation mode is selected on the cluster, max flow cut off solenoid valve actuates automatically.

Thus pilot pressure(Pm1,2) is sent to the regulator and pump discharge volume is decreased.

