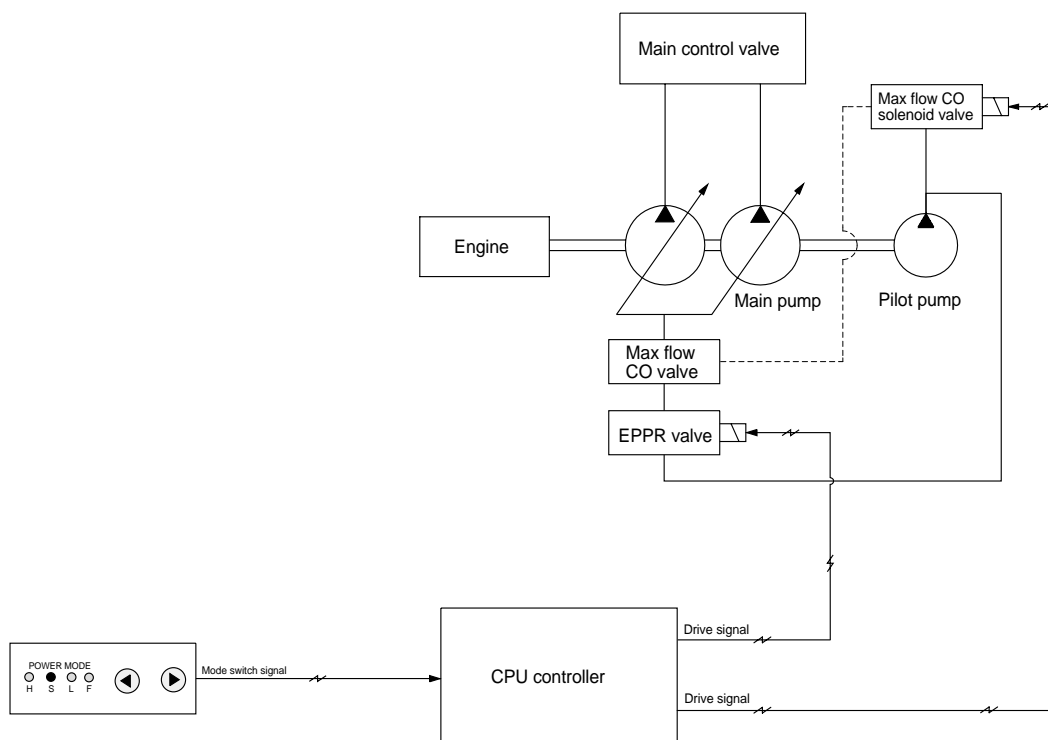


GROUP 8 MAX FLOW CUT-OFF FUNCTION



1. MAX FLOW CUT-OFF FUNCTION

When the L mode is selected, CPU controller makes max flow cut off solenoid valve activated to reduce the pump discharge volume(Q) to approximately 85%.

So, work speed in low pressure range(Less than 100kgf/cm²) is cut down to 85% by this function. In other modes(H, S, F), this function is canceled automatically.

