

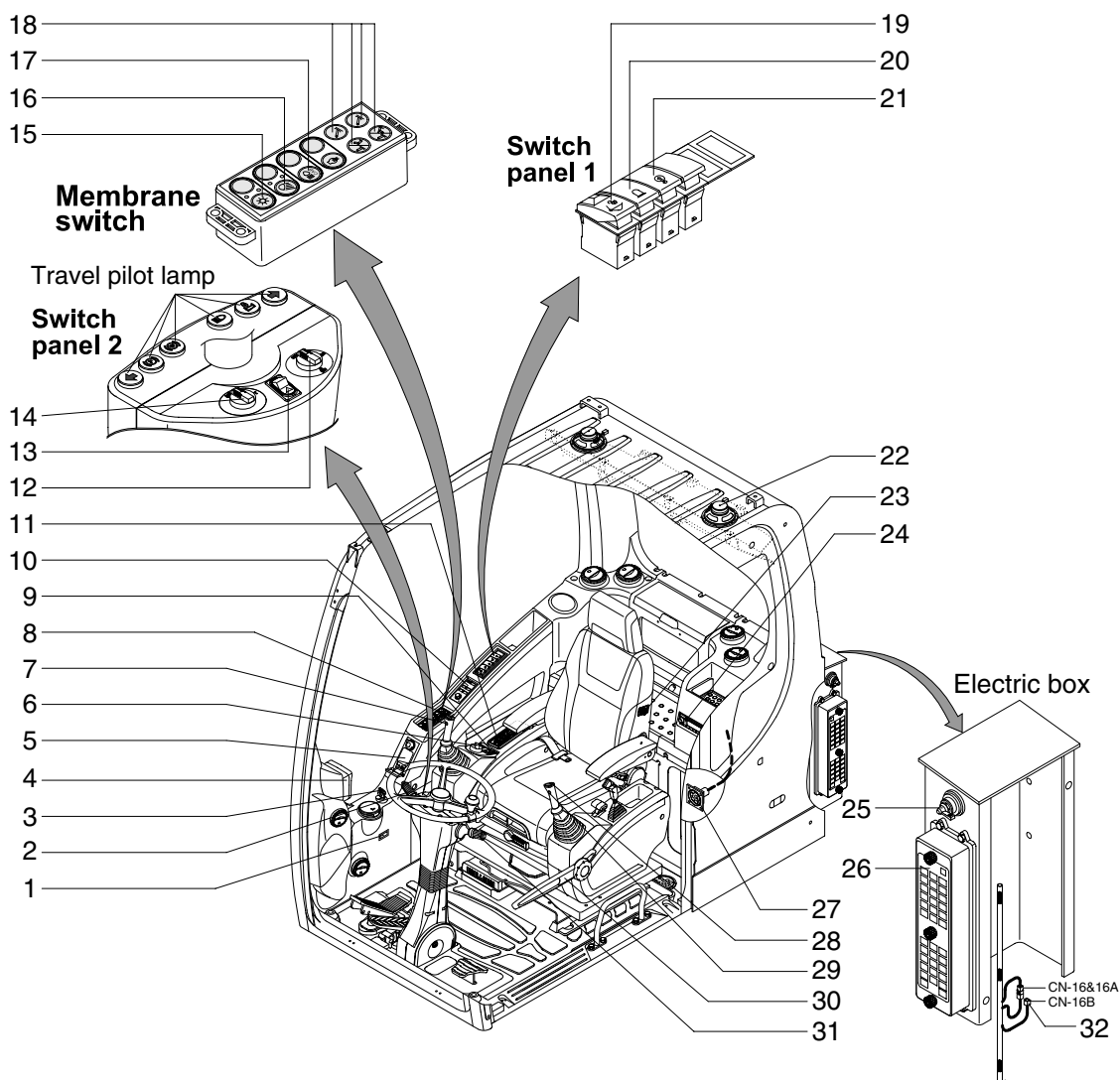
SECTION 4 ELECTRICAL SYSTEM

| | |
|--|------|
| Group 1 Component Location | 4-1 |
| Group 2 Electrical Circuit | 4-3 |
| Group 3 Electrical Component Specification | 4-24 |
| Group 4 Connectors | 4-32 |

SECTION 4 ELECTRICAL SYSTEM

GROUP 1 COMPONENT LOCATION

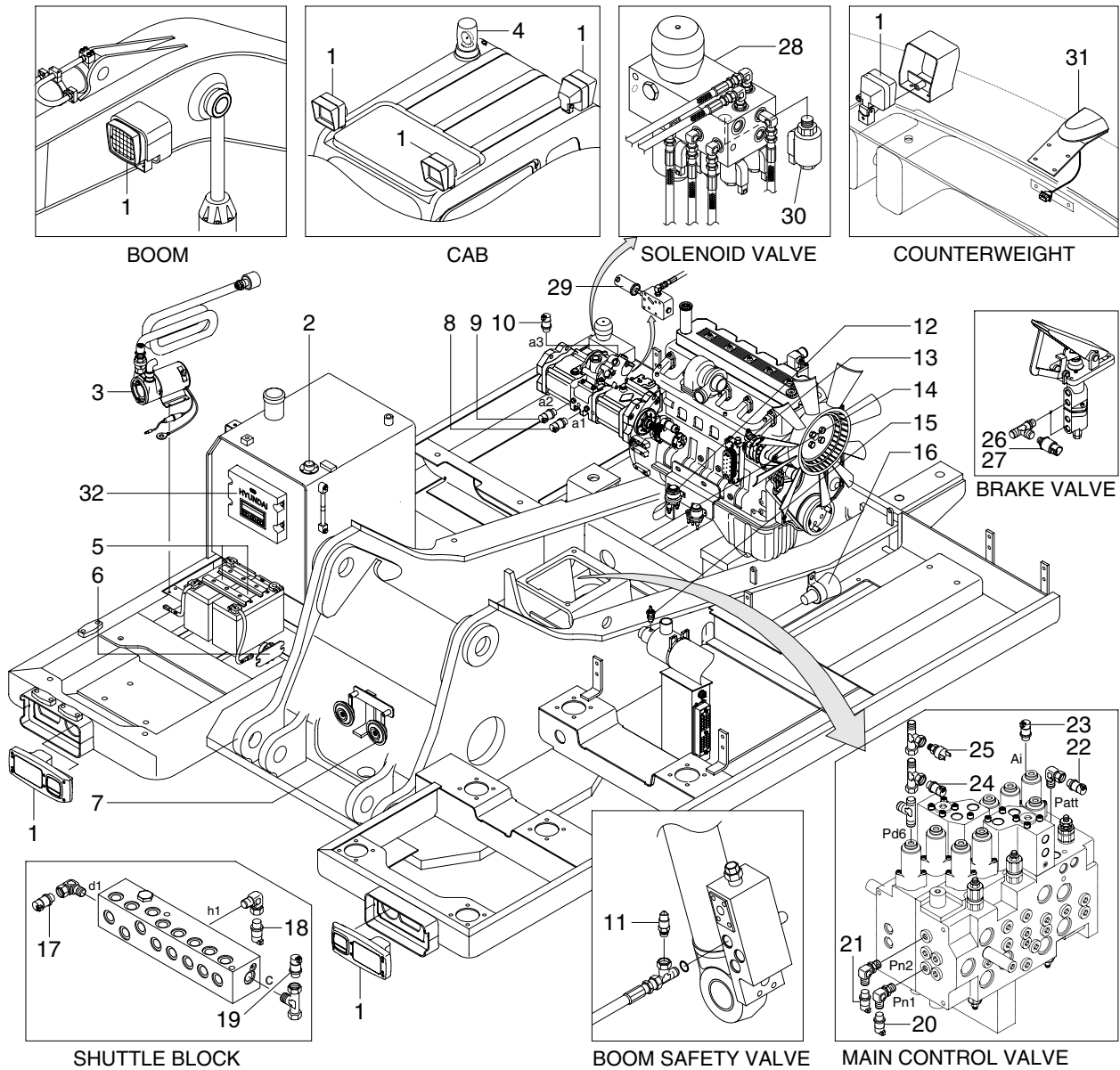
1. LOCATION 1



14W94EL01

- | | | |
|------------------------------|-----------------------|---------------------------------|
| 1 Service meter | 12 Ram lock switch | 23 Heated seat switch |
| 2 Multi function switch (RH) | 13 Hazard switch | 24 Radio & CD/MP3 player |
| 3 Start switch | 14 Select switch 2 | 25 Master switch |
| 4 Cluster | 15 Main light switch | 26 Fuse & relay box |
| 5 Handsfree | 16 Work light switch | 27 RS232 & J1939 service socket |
| 6 Accel dial | 17 Cab light switch | 28 One touch decel switch |
| 7 Breaker operation switch | 18 Select switch 1 | 29 Power max switch |
| 8 Horn switch | 19 Quick clamp switch | 30 Safety lever |
| 9 Creep switch | 20 Beacon switch | 31 Multi function switch (LH) |
| 10 Remote controller | 21 Overload switch | 32 Emergency engine connector |
| 11 Air conditioner switch | 22 Speaker | |

2. LOCATION 2



17W94EL02

- | | | | | | |
|----|--------------------------|----|-------------------------------|----|----------------------------|
| 1 | Lamp | 12 | Start relay | 23 | Travel pressure sensor |
| 2 | Fuel sender | 13 | Alternator | 24 | Dozer pressure sensor |
| 3 | Fuel filler pump | 14 | Heater relay | 25 | Dozer pressure switch |
| 4 | Beacon lamp | 15 | Air cleaner switch | 26 | Working pressure sensor |
| 5 | Battery | 16 | Travel alarm buzzer | 27 | Brake lamp pressure sensor |
| 6 | Battery relay | 17 | Arm/Bucket in pressure sensor | 28 | Solenoid valve |
| 7 | Horn | 18 | Boom up pressure sensor | 29 | Pump EPPR valve |
| 8 | P1 pressure sensor | 19 | Swing pressure sensor | 30 | Boom priority EPPR valve |
| 9 | P2 pressure sensor | 20 | Nega 1 pressure sensor | 31 | Rear camera |
| 10 | P3 pressure sensor | 21 | Nega 2 pressure sensor | 32 | MCU |
| 11 | Overload pressure sensor | 22 | Attach pressure sensor | | |