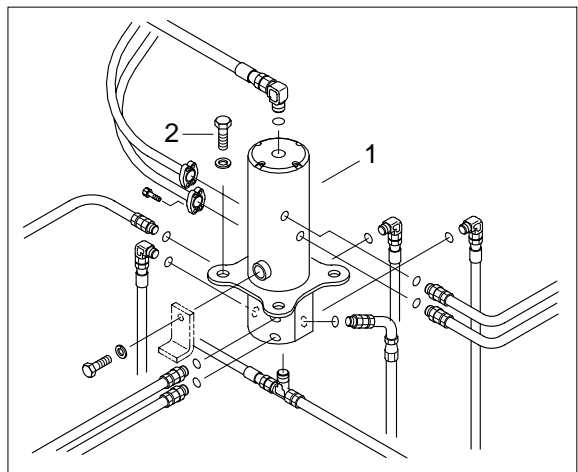


GROUP 8 TURNING JOINT

1. REMOVAL AND INSTALL

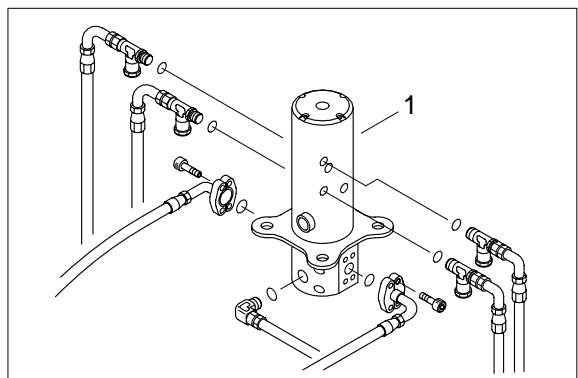
1) REMOVAL

- (1) Lower the work equipment to the ground and stop the engine.
- (2) Operate the control levers and pedals several times to release the remaining pressure in the hydraulic piping.
- (3) Loosen the breather slowly to release the pressure inside the hydraulic tank.
- ▲ Escaping fluid under pressure can penetrate the skin causing serious injury.
- ※ When pipes and hoses are disconnected, the oil inside the piping will flow out, so catch it in oil pan.
- (4) Disconnect all hoses.
- (5) Sling the turning joint assembly (1) and remove the mounting bolt(2).
 - Weight : 76kg(168lb)
 - Tightening torque : $12.2 \pm 1.3 \text{ kgf} \cdot \text{m}$
($88.2 \pm 9.4 \text{ lbf} \cdot \text{ft}$)
- (6) Remove the turning joint assembly.
- ※ When removing the turning joint, check that all the hoses have been disconnected.



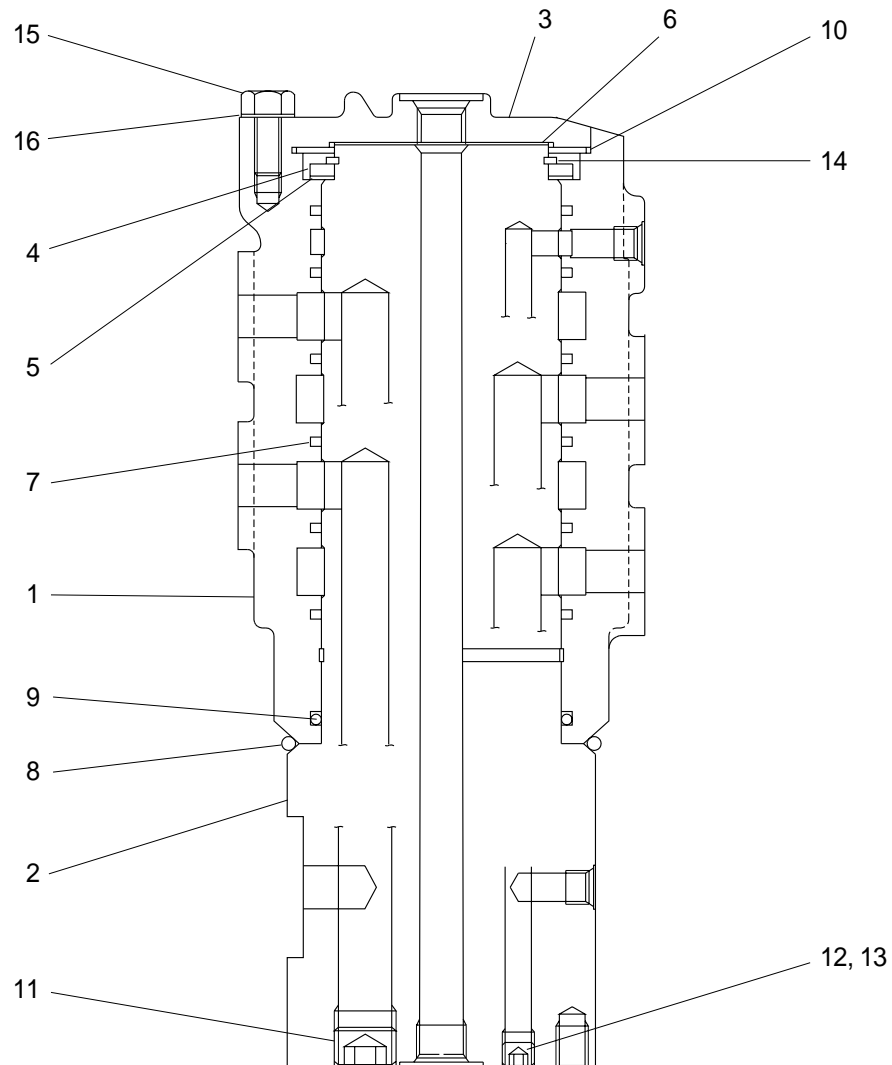
2) INSTALL

- (1) Carry out installation in the reverse order to removal.
- ※ Take care of turning joint direction.
- ※ Assemble hoses to their original positions.
- ※ Confirm the hydraulic oil level and check the hydraulic oil leak or not.



2. DISASSEMBLY AND ASSEMBLY

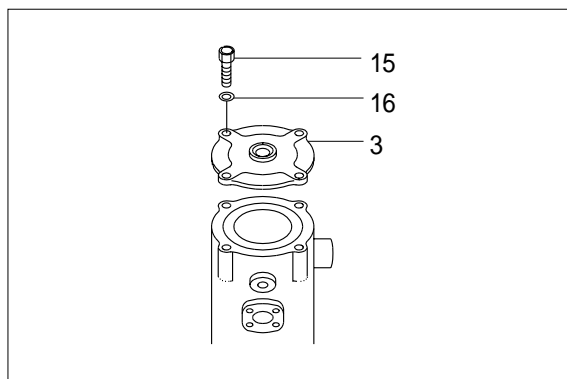
1) STRUCTURE



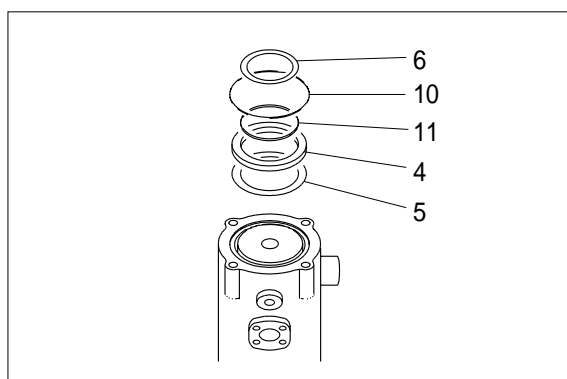
- | | | | | | |
|---|----------------|----|--------------|----|-------------------|
| 1 | Hub | 7 | Slipper seal | 12 | Plug |
| 2 | Shaft assembly | 8 | O-ring | 13 | Plug |
| 3 | Cover | 9 | O-ring | 14 | Retainer ring |
| 4 | Spacer | 10 | O-ring | 15 | Hexagon head bolt |
| 5 | Shim | 11 | Plug | 16 | Spring washer |
| 6 | Shim | | | | |

2) DISASSEMBLY

- (1) Before the disassembly, clean the turning joint.
Remove bolts(15), washer(16) and cover (3).

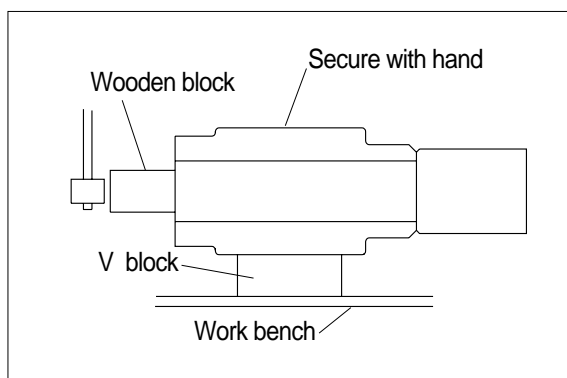


- (2) Remove shim(6) and O-ring(10).
(3) Remove retainer ring(11), spacer(4) and shim(5).

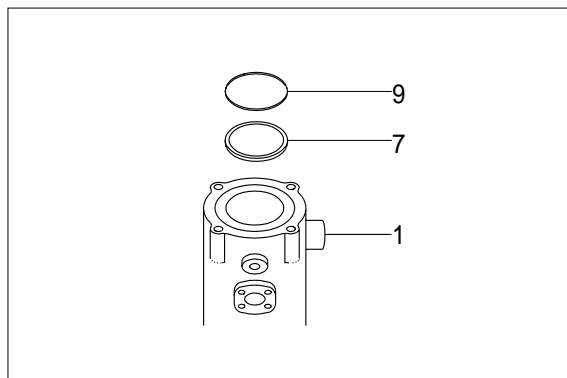


- (4) Place hub(1) on a V-block and by using a wood buffer at the shaft end, hit out shaft(2) to about 1/2 from the hub with a hammer.

- ※ Take care not to damage the shaft(2) when remove hub(1) or rest it sideways.
- ※ Put a fitting mark on hub(1) and shaft(2).



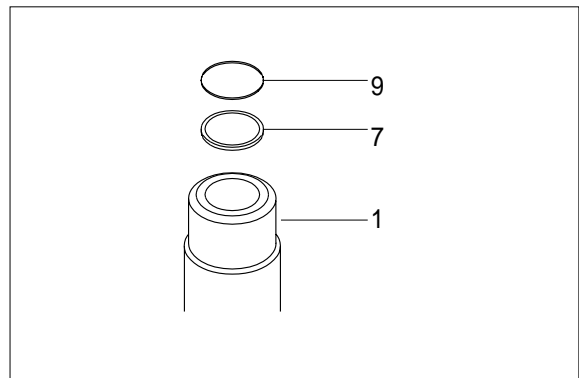
- (5) Remove fifteen slipper seals(7) and O-ring(9) from hub(1).



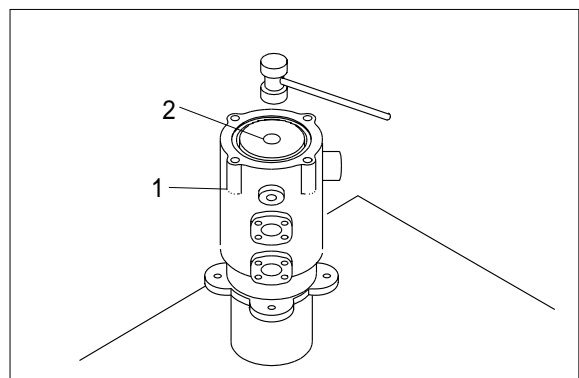
3) ASSEMBLY

- ※ Clean all parts.
- ※ As a general rule, replace oil seals and O-ring.
- ※ Coat the sliding surfaces of all parts with engine oil or grease before installing.

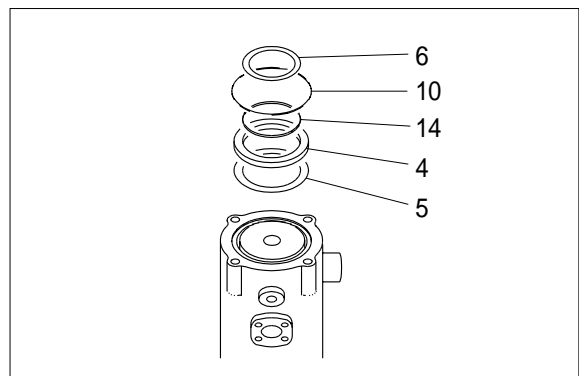
- (1) Fix fifteen slipper seal(7) and O-ring(9) to hub(1).
- (2) Fit O-ring(8) to shaft(2).



- (3) Set shaft(2) on block, tap hub(1) with a plastic hammer to install.



- (4) Fit shim(5), spacer(4) and retainer ring(14) to shaft(2).
- (5) Fit O-ring(10) to hub(1).
- (6) Fit shim(6) to shaft(2).



- (7) Install cover(3) to hub(1) and tighten bolts(15).
- Torque : 10 ~ 12.5kgf · m(72 ~ 90lbf · ft)

