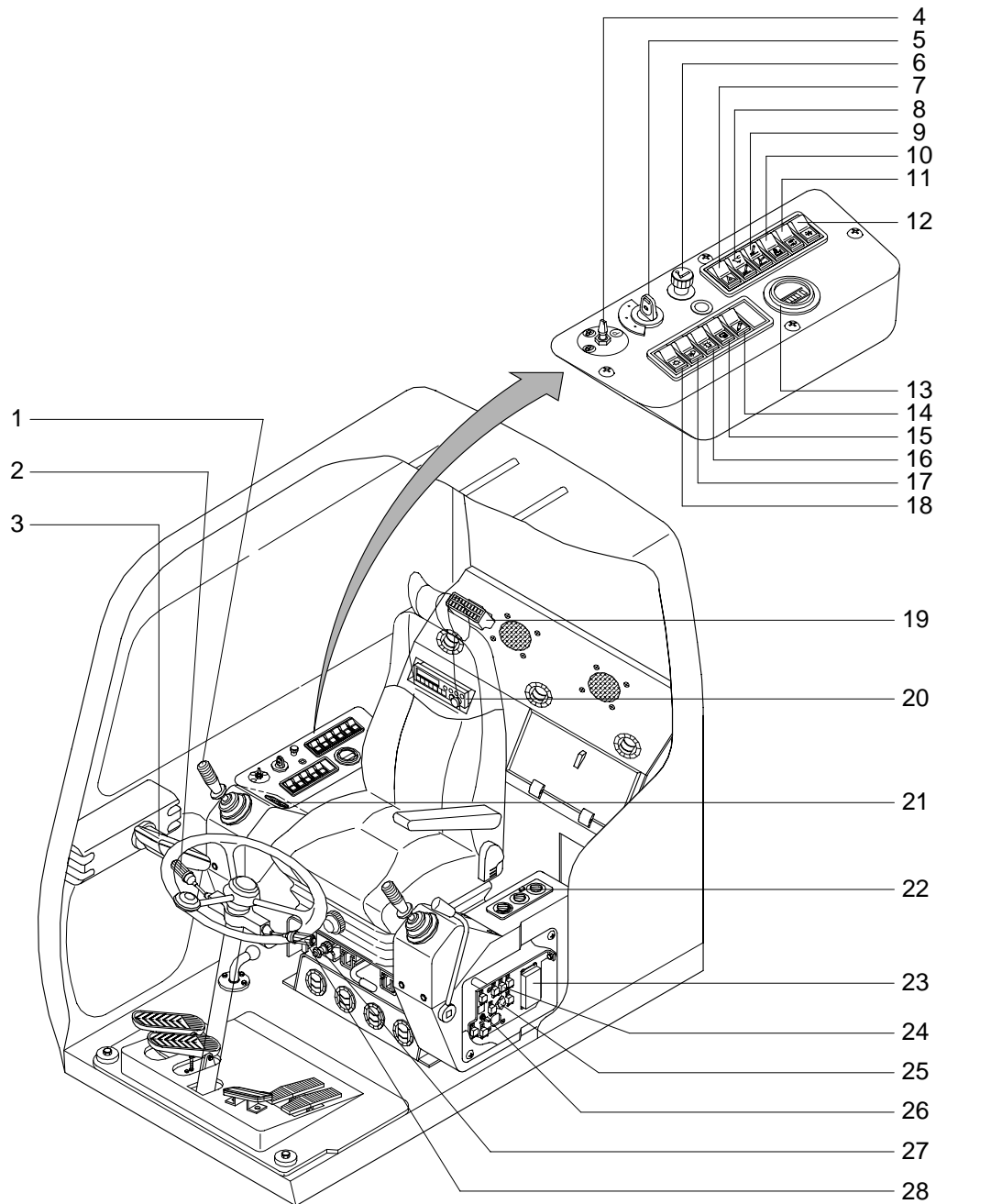


## SECTION 4 ELECTRICAL SYSTEM

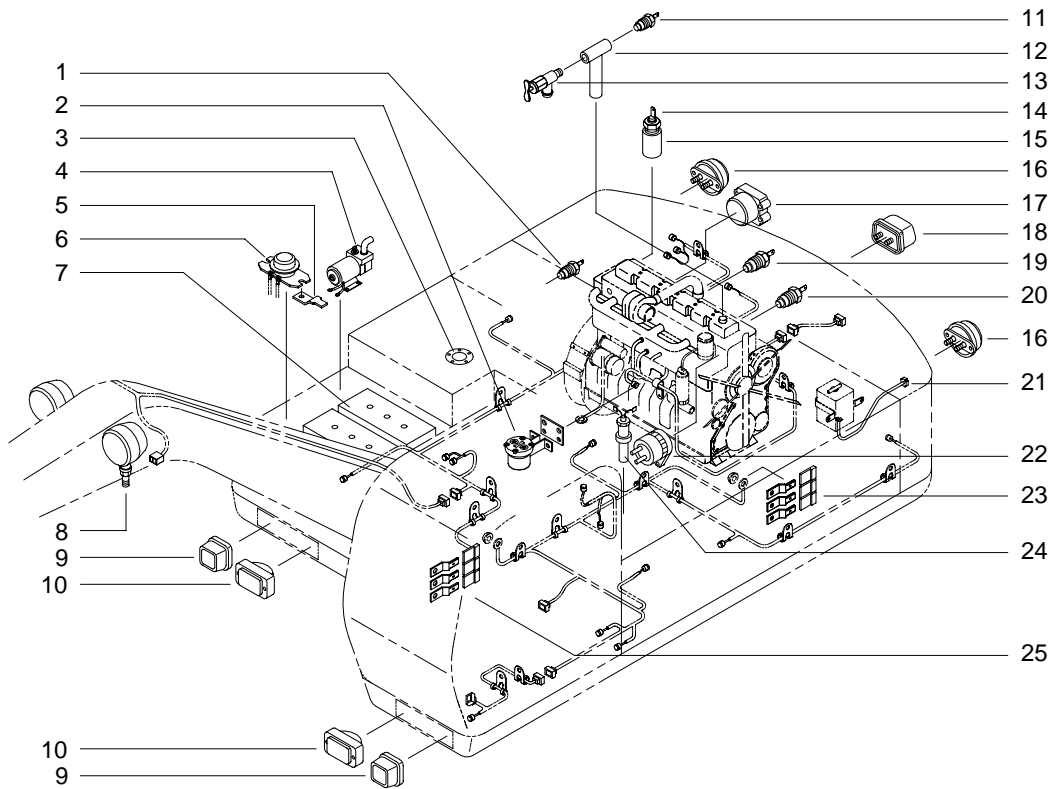
### GROUP 1 COMPONENT LOCATION

#### 1. LOCATION 1



- |   |                         |    |                           |    |                         |
|---|-------------------------|----|---------------------------|----|-------------------------|
| 1 | Horn switch             | 10 | Ram lock switch           | 20 | Cassette & radio        |
| 2 | RH multifunction switch | 11 | Arm half switch           | 21 | Warning indicator       |
| 3 | Cluster                 | 12 | Aircon switch             | 22 | Aircon & heater switch  |
| 4 | Parking switch          | 13 | Service meter             | 23 | CPU controller          |
| 5 | Starting switch         | 14 | Breaker switch(option)    | 24 | Relay                   |
| 6 | Cigar lighter switch    | 15 | Cold start switch(option) | 25 | Resistor                |
| 7 | Hazard switch           | 16 | Beacon switch(option)     | 26 | Prolix switch           |
| 8 | Outrigger switch        | 18 | Main light switch         | 27 | Emer engine acc lever   |
| 9 | Dozer blade switch      | 19 | Fuse box                  | 28 | LH multifunction switch |

## 2. LOCATION 2



- |                          |                                 |                               |
|--------------------------|---------------------------------|-------------------------------|
| 1 Temperature sendor     | 10 Head lamp                    | 18 Number plate lamp          |
| 2 Start relay            | 11 Hydraulic temperature sendor | 19 Engine speed sensor        |
| 3 Fuel sendor            | 12 Heater adapter               | 20 Engine oil pressure switch |
| 4 Fuel filler pump       | 13 Heater valve                 | 21 Coolant level sendor       |
| 5 Connector plate        | 14 Over heat switch             | 22 Alternator                 |
| 6 Battery relay          | 15 Adapter                      | 23 Connector plate            |
| 7 Battery                | 16 Rear combination lamp        | 24 Air cleaner switch         |
| 8 Work light             | 17 Governor motor               | 25 Connector plate            |
| 9 Front combination lamp |                                 |                               |