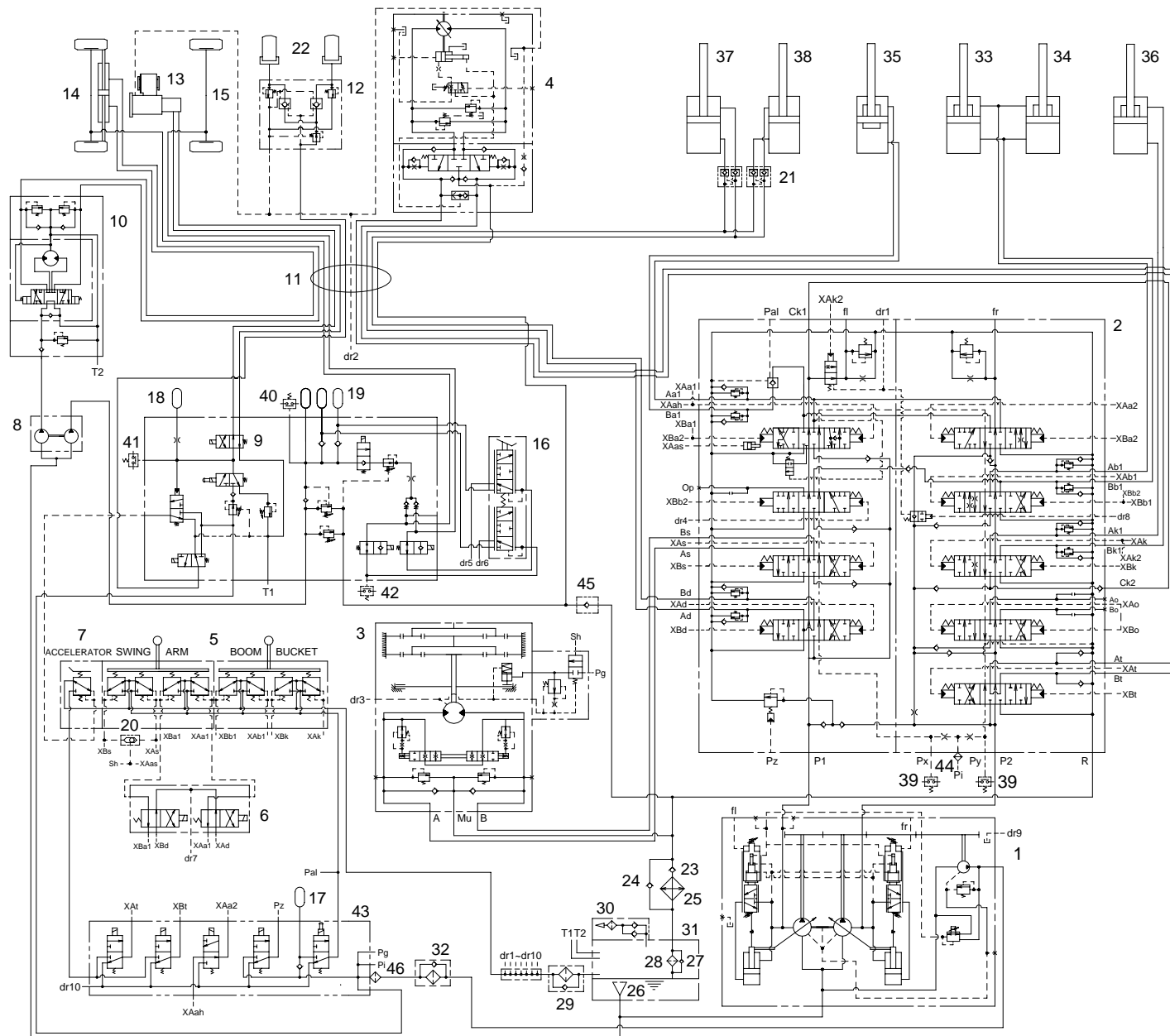


SECTION 3 HYDRAULIC SYSTEM

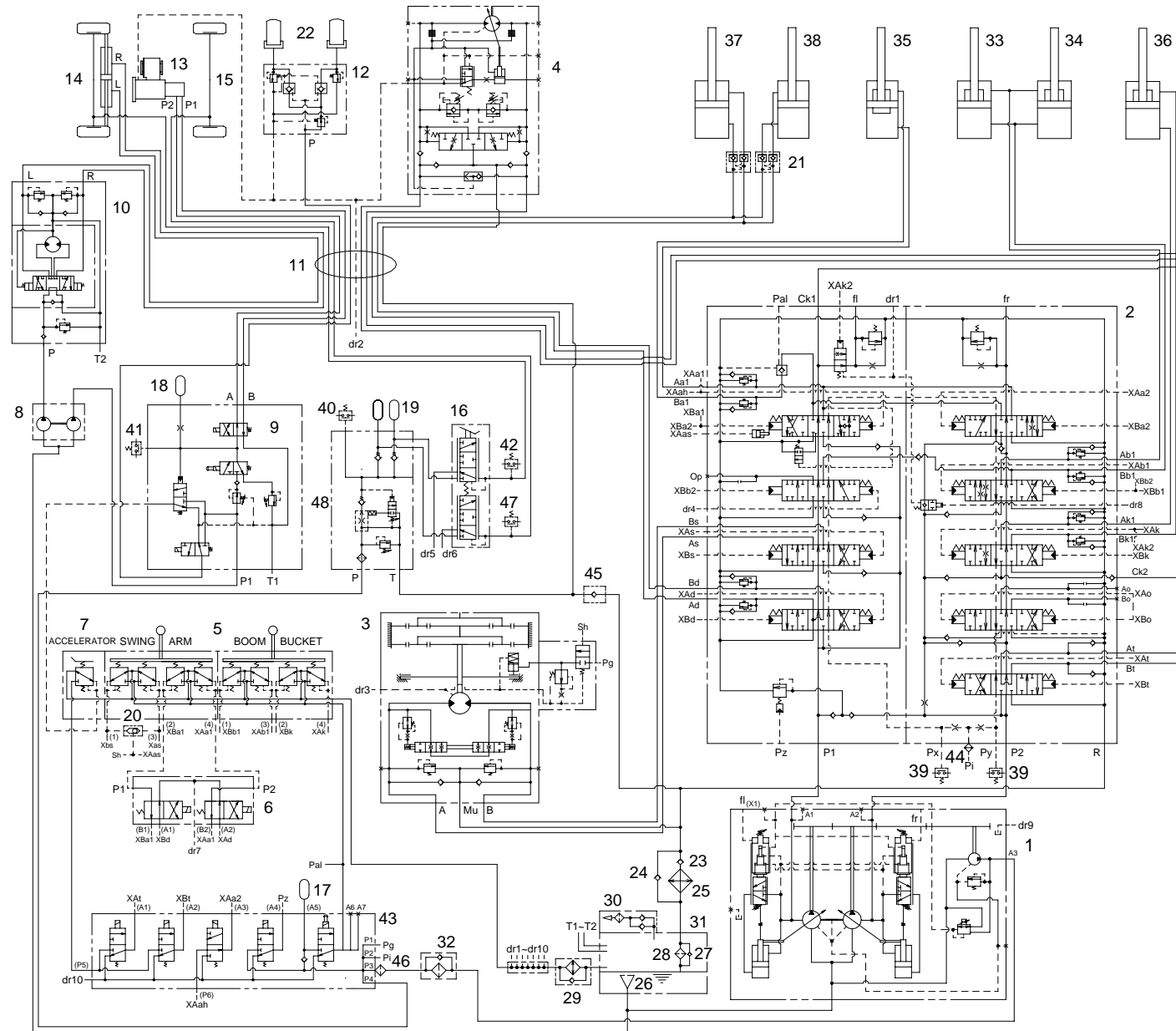
GROUP 1 HYDRAULIC CIRCUIT

• MACHINE SERIAL NO : #0062



- 1 MAIN PUMP
- 2 MAIN CONTROL VALVE
- 3 SWING MOTOR
- 4 TRAVEL MOTOR
- 5 RCV LEVER
- 6 SOLENOID SELECTOR
- 7 ACCELERATOR PEDAL
- 8 GEAR PUMP
- 9 POWER CONTROL VALVE
- 10 STEERING VALVE
- 11 TURNING JOINT
- 12 OSCILLATING VALVE
- 13 TRANSMISSION
- 14 FRONT AXLE
- 15 REAR AXLE
- 16 BRAKE VALVE
- 17 ACCUMULATOR
- 18 ACCUMULATOR
- 19 ACCUMULATOR
- 20 SHUTTLE VALVE
- 21 PILOT CHECK VALVE
- 22 OSCILLATING CYLINDER
- 23 CHECK VALVE
- 24 CHECK VALVE
- 25 OIL COOLER
- 26 STRAINER
- 27 BYPASS VALVE
- 28 RETURN FILTER
- 29 SPIN FILTER
- 30 AIR BREATHER
- 31 HYDRAULIC TANK
- 32 LINE FILTER
- 33 BOOM CYLINDER(RH)
- 34 BOOM CYLINDER(LH)
- 35 ARM CYLINDER
- 36 BUCKET CYLINDER
- 37 DOZER CYLINDER(RH)
- 38 DOZER CYLINDER(LH)
- 39 PRESSURE SWITCH
- 40 PRESSURE SWITCH
- 41 PRESSURE SWITCH
- 42 PRESSURE SWITCH
- 43 SOLENOID VALVE
- 44 LAST GUARD FILTER
- 45 CHECK VALVE
- 46 LAST GUARD FILTER

• MACHINE SERIAL NO : #0063-



- 1 MAIN PUMP
- 2 MAIN CONTROL VALVE
- 3 SWING MOTOR
- 4 TRAVEL MOTOR
- 5 RCV LEVER
- 6 SOLENOID SELECTOR
- 7 ACCELERATOR PEDAL
- 8 GEAR PUMP
- 9 TRANSMISSION CONTROL VALVE
- 10 STEERING VALVE
- 11 TURNING JOINT
- 12 OSCILLATING VALVE
- 13 TRANSMISSION
- 14 FRONT AXLE
- 15 REAR AXLE
- 16 BRAKE VALVE
- 17 ACCUMULATOR
- 18 ACCUMULATOR
- 19 ACCUMULATOR
- 20 SHUTTLE VALVE
- 21 PILOT CHECK VALVE
- 22 OSCILLATING CYLINDER
- 23 CHECK VALVE
- 24 CHECK VALVE
- 25 OIL COOLER
- 26 STRAINER
- 27 BYPASS VALVE
- 28 RETURN FILTER
- 29 SPIN FILTER
- 30 AIR BREATHER
- 31 HYDRAULIC TANK
- 32 LINE FILTER
- 33 BOOM CYLINDER(RH)
- 34 BOOM CYLINDER(LH)
- 35 ARM CYLINDER
- 36 BUCKET CYLINDER
- 37 DOZER CYLINDER(RH)
- 38 DOZER CYLINDER(LH)
- 39 PRESSURE SWITCH
- 40 PRESSURE SWITCH
- 41 PRESSURE SWITCH
- 42 PRESSURE SWITCH
- 43 SOLENOID VALVE
- 44 LAST GUARD FILTER
- 45 CHECK VALVE
- 46 LAST GUARD FILTER
- 47 PRESSURE SWITCH
- 48 BRAKE SUPPLY VALVE