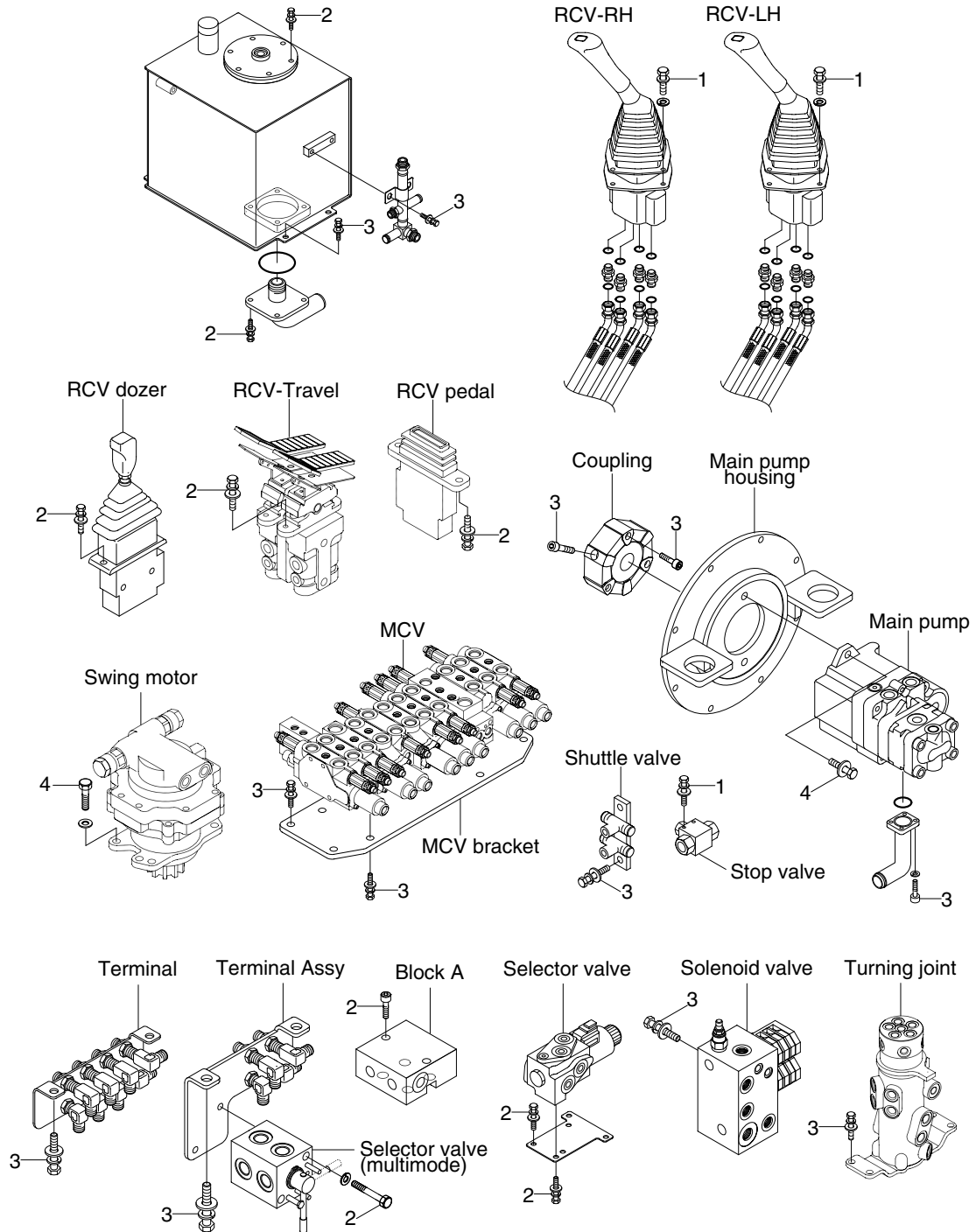


# GROUP 4 HYDRAULIC SYSTEM

## 1. HYDRAULIC COMPONENTS MOUNTING 1



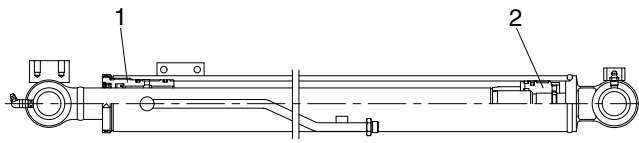
1698CM05

### · Tightening torque

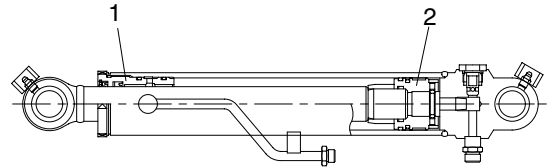
| Item | Size     | kgf · m  | lbf · ft |
|------|----------|----------|----------|
| 1    | M 6×1.0  | 1.05±0.2 | 7.6±1.45 |
| 2    | M 8×1.25 | 2.5±0.5  | 18.1±3.6 |

| Item | Size     | kgf · m  | lbf · ft  |
|------|----------|----------|-----------|
| 3    | M10×1.5  | 6.9±1.4  | 49.9±10.1 |
| 4    | M12×1.75 | 12.8±3.0 | 93±22.0   |

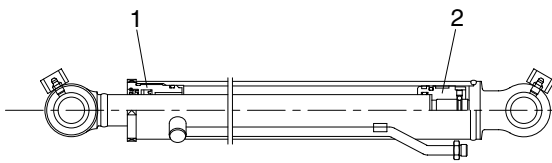
## 2. HYDRAULIC COMPONENTS MOUNTING 2



Boom cylinder



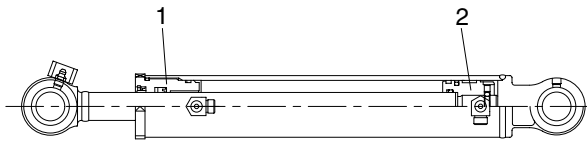
Arm cylinder



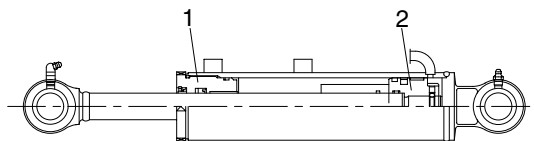
Bucket cylinder



Extension cylinder



Boom swing cylinder



Blade cylinder

1698CM07

### • Tightening torque

#### 1) Gland

| Item                | Size | kgf · m  | lbf · ft   |
|---------------------|------|----------|------------|
| Boom cylinder       | M65  | 52 ± 5.0 | 376 ± 36.2 |
| Arm cylinder        | M65  | 52 ± 5.0 | 376 ± 36.2 |
| Bucket cylinder     | M60  | 48 ± 5.0 | 347 ± 36.2 |
| Dozer cylinder      | M70  | 56 ± 5.0 | 405 ± 36.2 |
| Boom swing cylinder | M60  | 48 ± 4.8 | 347 ± 34.7 |
| Extension cylinder  | M55  | 44 ± 4.5 | 318 ± 32.5 |

#### 2) Piston

| Item                | Size | kgf · m  | lbf · ft   |
|---------------------|------|----------|------------|
| Boom cylinder       | M28  | 70 ± 7.0 | 506 ± 50.6 |
| Arm cylinder        | M28  | 70 ± 7.0 | 506 ± 50.6 |
| Bucket cylinder     | M24  | 60 ± 6.0 | 434 ± 43.4 |
| Dozer cylinder      | M24  | 60 ± 6.0 | 434 ± 43.4 |
| Boom swing cylinder | M24  | 60 ± 6.0 | 434 ± 43.4 |
| Extension cylinder  | M20  | 50 ± 5.0 | 362 ± 36.2 |