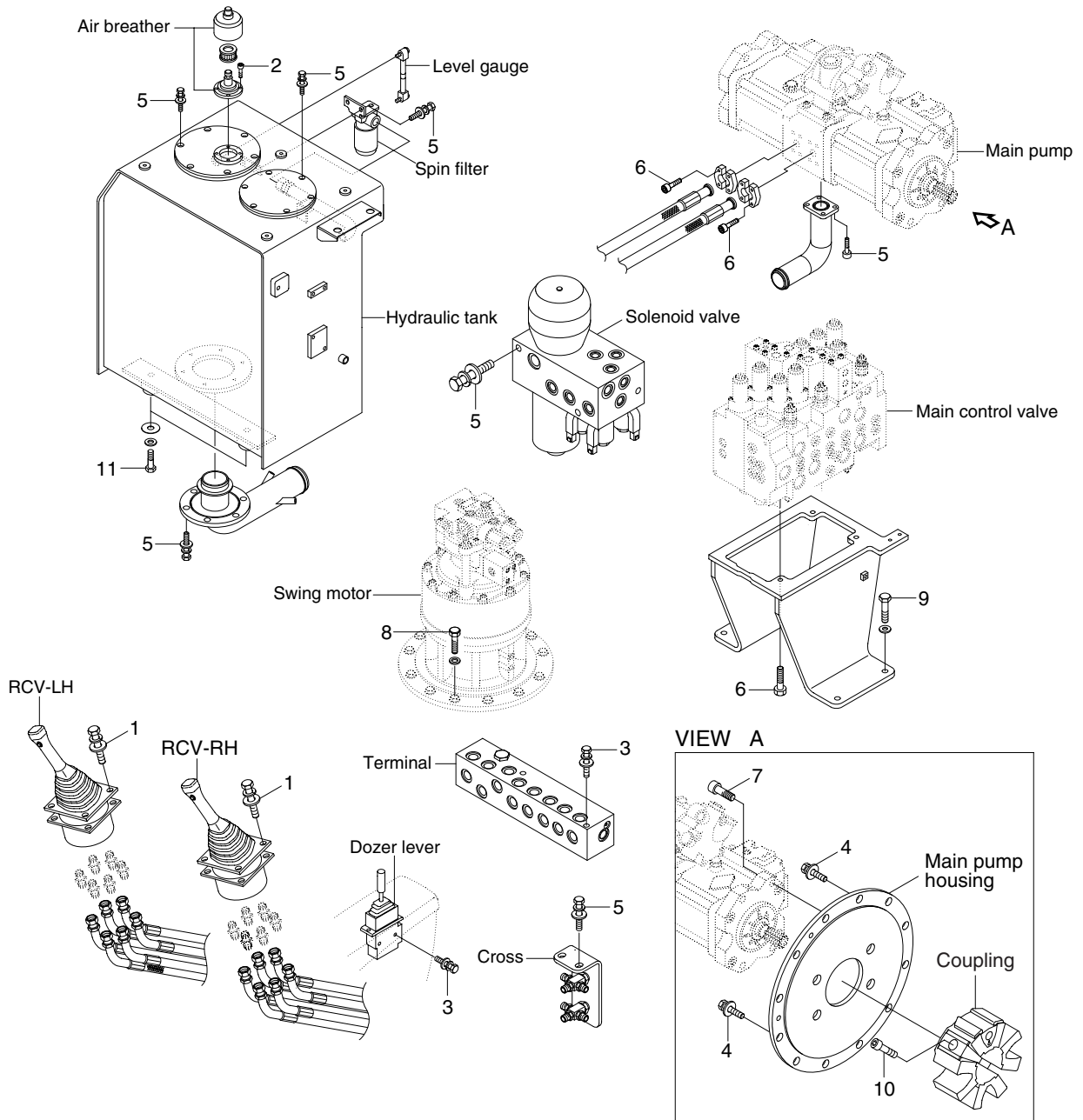


GROUP 4 HYDRAULIC SYSTEM

1. HYDRAULIC COMPONENTS MOUNTING 1



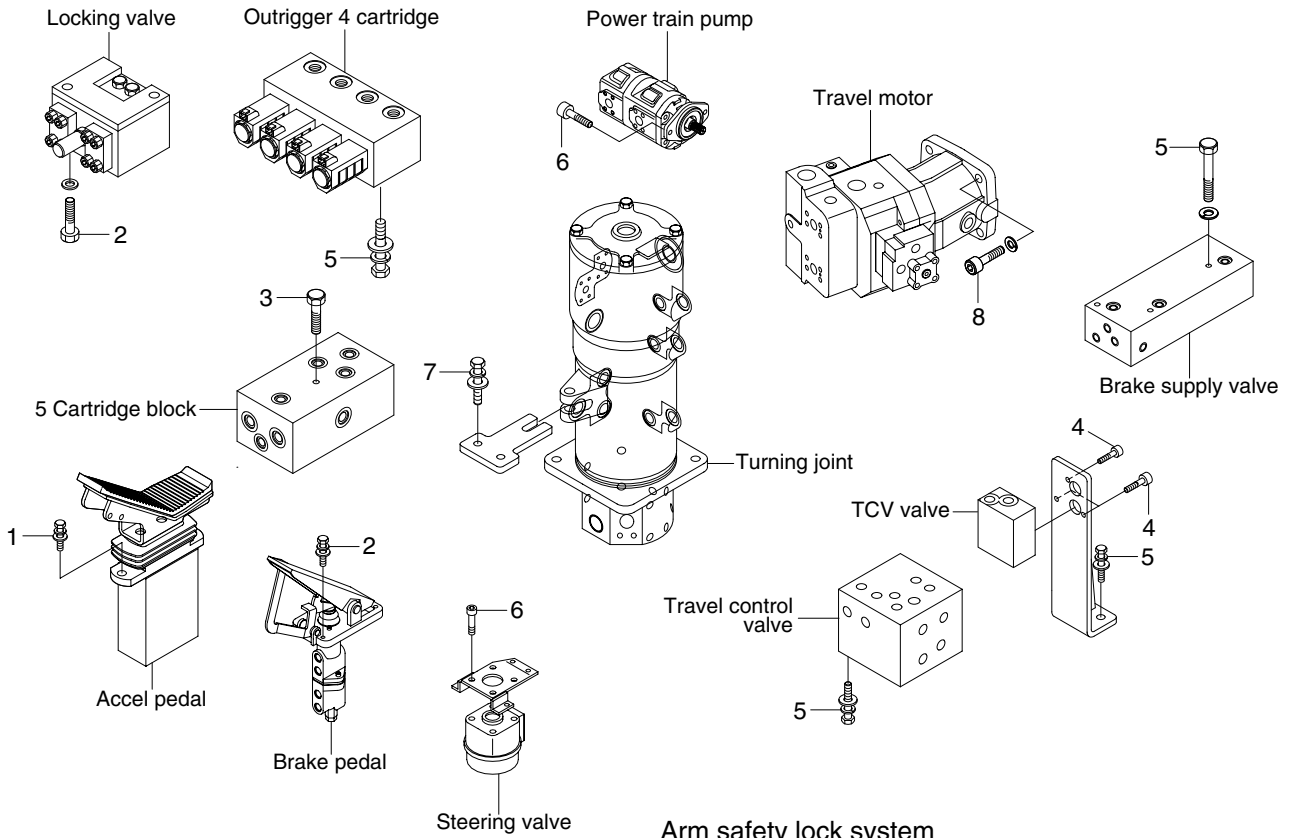
14W99CM05

· Tightening torque

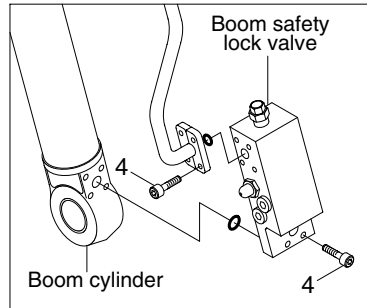
Item	Size	kgf · m	kgf · m
1	M 6×1.0	1.05±0.2	7.6±1.45
2	M 6×1.0	1.44±0.3	10.4±2.2
3	M 8×1.25	3.43±0.7	24.8±5.1
4	M10×1.5	4.8±0.3	34.7±2.2
5	M10×1.5	6.9±1.4	49.9±10.1
6	M12×1.75	12.2±1.3	88.2±9.4

Item	Size	kgf · m	kgf · m
7	M16×2.0	25.0±2.5	181±18.1
8	M16×2.0	29.6±3.2	215±23.1
9	M16×2.0	29.7±4.5	215±32.5
10	M18×2.5	32±1.0	231±7.2
11	M20×2.5	46±5.1	333±36.9
-	-	-	-

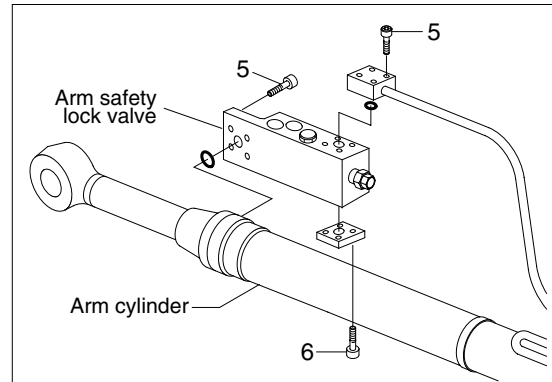
2. HYDRAULIC COMPONENTS MOUNTING 2



Boom safety lock system



Arm safety lock system



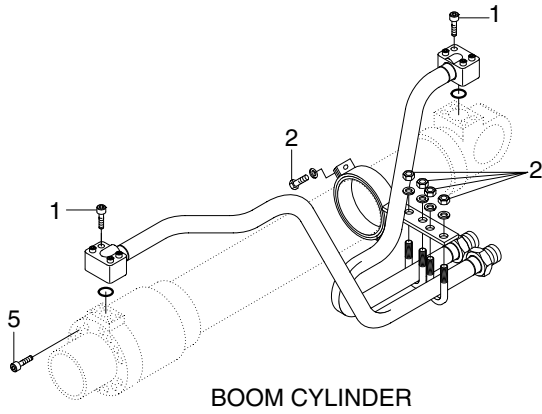
14W99CM06

· Tightening torque

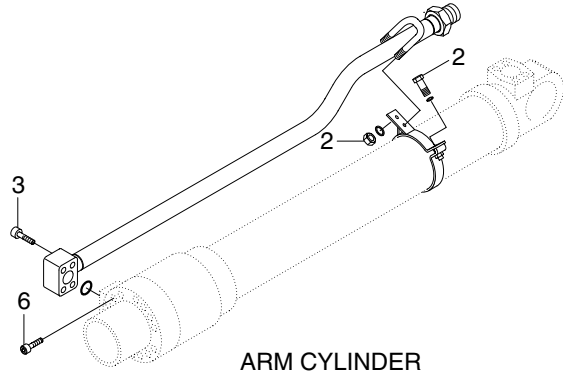
Item	Size	kgf · m	kgf · m
1	M 6×1.0	1.05±0.2	7.6±1.45
2	M 8×1.25	2.5±0.5	18.1±3.6
3	M 8×1.25	3.43±0.7	24.8±5.1
4	M 8×1.25	4.05±0.8	29.3±5.8

Item	Size	kgf · m	kgf · m
5	M10×1.5	6.9±1.4	49.9±10.1
6	M10×1.5	8.27±1.7	59.8±12.3
7	M12×1.75	12.3±1.3	89±9.4
8	M16×2.0	29.6±3.2	214±23.1

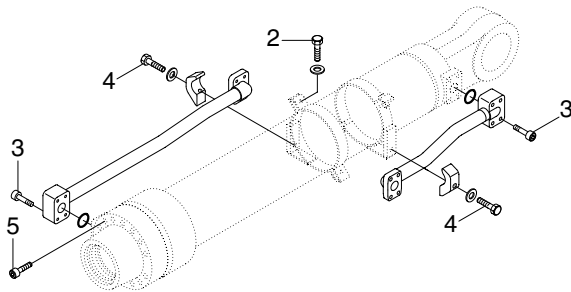
3. HYDRAULIC COMPONENTS MOUNTING 3



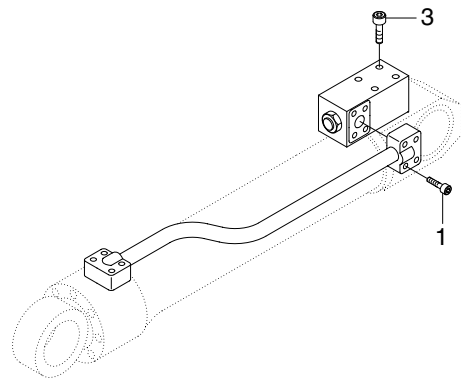
BOOM CYLINDER



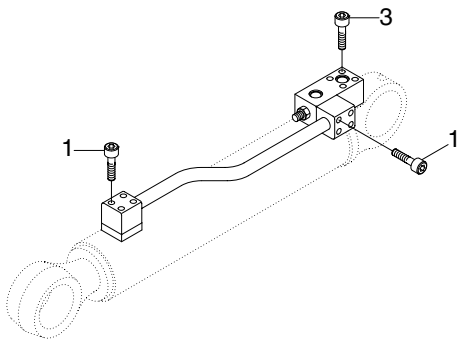
ARM CYLINDER



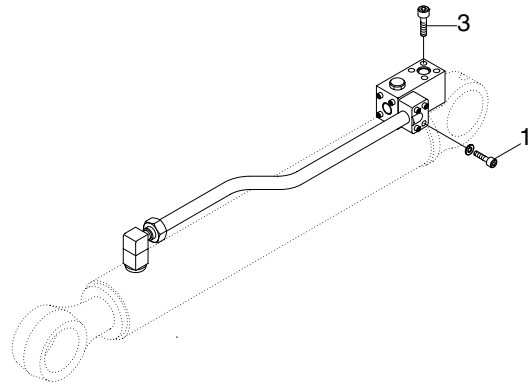
BUCKET CYLINDER



OUTRIGGER CYLINDER



DOZER BLADE CYLINDER-FRONT



DOZER BLADE CYLINDER-REAR

14W99CM07

· Tightening torque

Item	Size	kgf · m	kgf · m
1	M 8×1.25	2.7±0.3	19.5±2.2
2	M10×1.5	3.2±0.3	23.1±2.2
3	M10×1.5	5.4±0.5	39.1±3.6

Item	Size	kgf · m	kgf · m
4	M12×1.75	9.3±1.9	67.3±13.7
5	M14×2.0	15±2.0	108±14.5
6	M16×2.0	23±2.0	166±14.5