

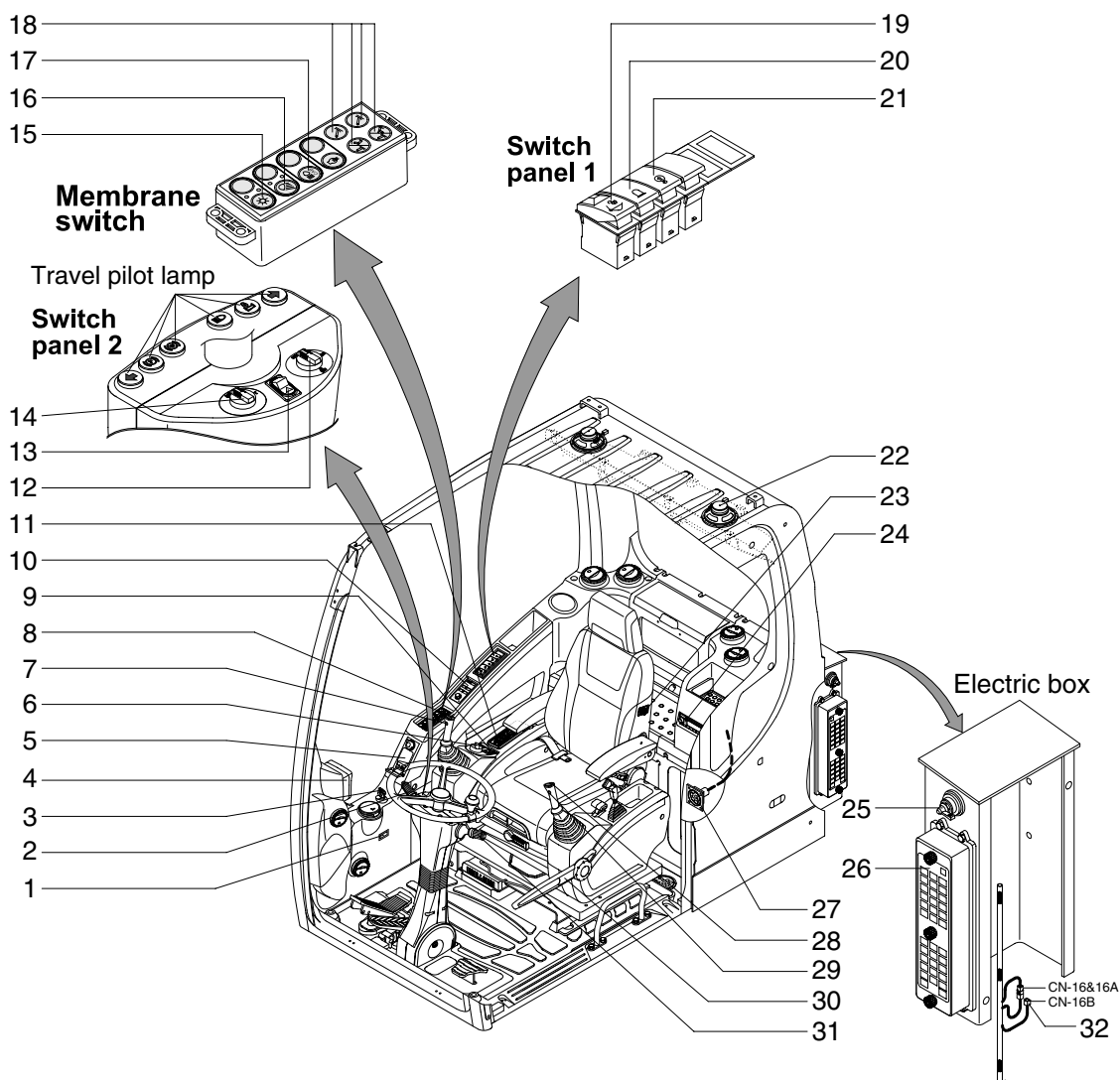
## SECTION 4 ELECTRICAL SYSTEM

|  |      |
|--|------|
| Group 1 Component Location .....                 | 4-1  |
| Group 2 Electrical Circuit .....                 | 4-3  |
| Group 3 Electrical Component Specification ..... | 4-24 |
| Group 4 Connectors .....                         | 4-32 |

# SECTION 4 ELECTRICAL SYSTEM

## GROUP 1 COMPONENT LOCATION

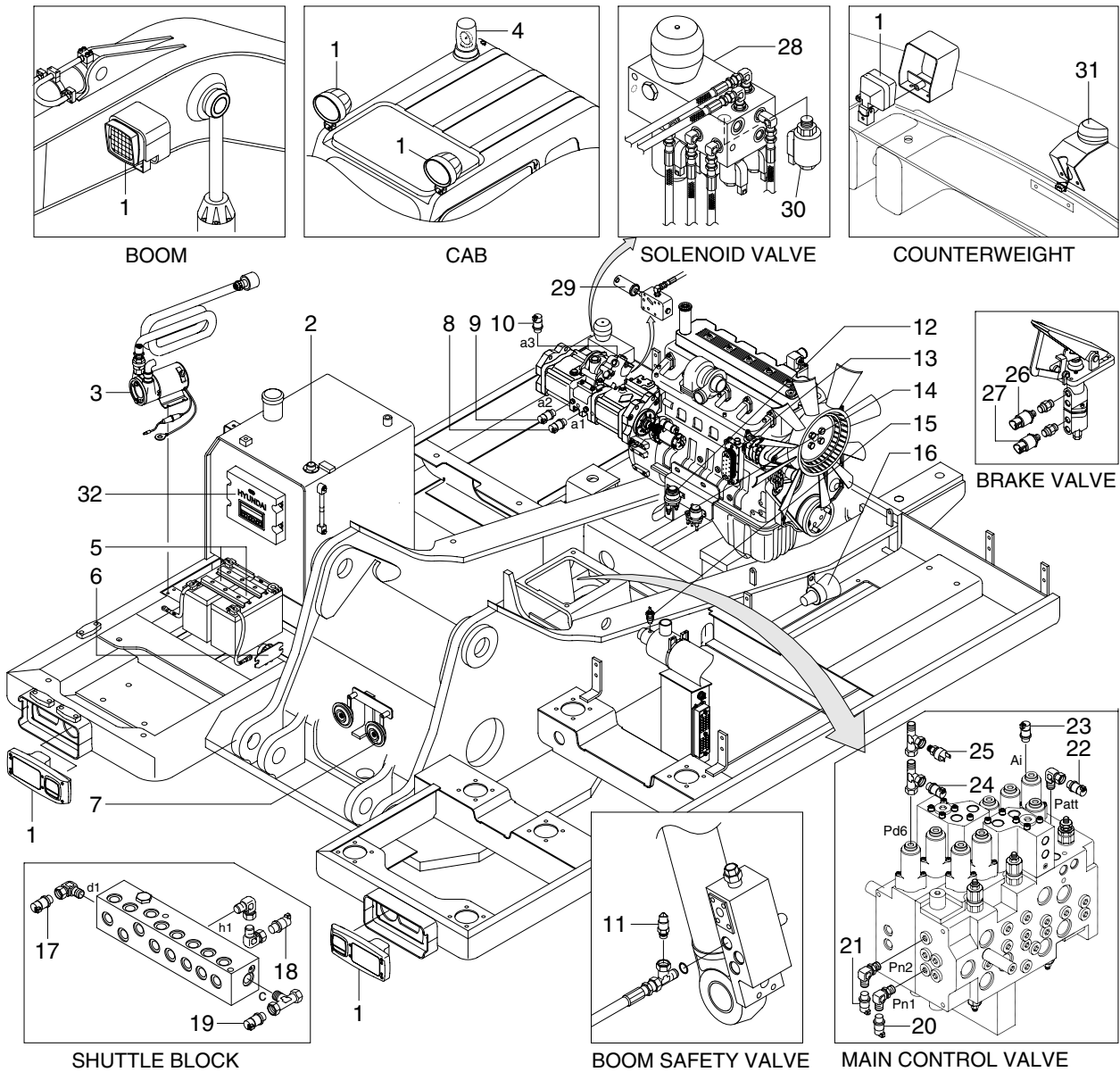
### 1. LOCATION 1



14W94EL01

|                              |                       |                                 |
|------------------------------|-----------------------|---------------------------------|
| 1 Service meter              | 12 Ram lock switch    | 23 Heated seat switch           |
| 2 Multi function switch (RH) | 13 Hazard switch      | 24 Radio & CD/MP3 player        |
| 3 Start switch               | 14 Select switch 2    | 25 Master switch                |
| 4 Cluster                    | 15 Main light switch  | 26 Fuse & relay box             |
| 5 Handsfree                  | 16 Work light switch  | 27 RS232 & J1939 service socket |
| 6 Accel dial                 | 17 Cab light switch   | 28 One touch decel switch       |
| 7 Breaker operation switch   | 18 Select switch 1    | 29 Power max switch             |
| 8 Horn switch                | 19 Quick clamp switch | 30 Safety lever                 |
| 9 Creep switch               | 20 Beacon switch      | 31 Multi function switch (LH)   |
| 10 Remote controller         | 21 Overload switch    | 32 Emergency engine connector   |
| 11 Air conditioner switch    | 22 Speaker            |                                 |

## 2. LOCATION 2



14W94EL02

- |    |                          |    |                               |    |                            |
|----|--------------------------|----|-------------------------------|----|----------------------------|
| 1  | Lamp                     | 12 | Start relay                   | 23 | Travel pressure sensor     |
| 2  | Fuel sender              | 13 | Alternator                    | 24 | Dozer pressure sensor      |
| 3  | Fuel filler pump         | 14 | Heater relay                  | 25 | Dozer pressure switch      |
| 4  | Beacon lamp              | 15 | Air cleaner switch            | 26 | Working pressure sensor    |
| 5  | Battery                  | 16 | Travel alarm buzzer           | 27 | Brake lamp pressure sensor |
| 6  | Battery relay            | 17 | Arm/Bucket in pressure sensor | 28 | Solenoid valve             |
| 7  | Horn                     | 18 | Boom up pressure sensor       | 29 | Pump EPPR valve            |
| 8  | P1 pressure sensor       | 19 | Swing pressure sensor         | 30 | Boom priority EPPR valve   |
| 9  | P2 pressure sensor       | 20 | Nega 1 pressure sensor        | 31 | Rear camera                |
| 10 | P3 pressure sensor       | 21 | Nega 2 pressure sensor        | 32 | MCU                        |
| 11 | Overload pressure sensor | 22 | Attach pressure sensor        |    |                            |