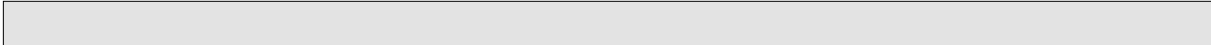


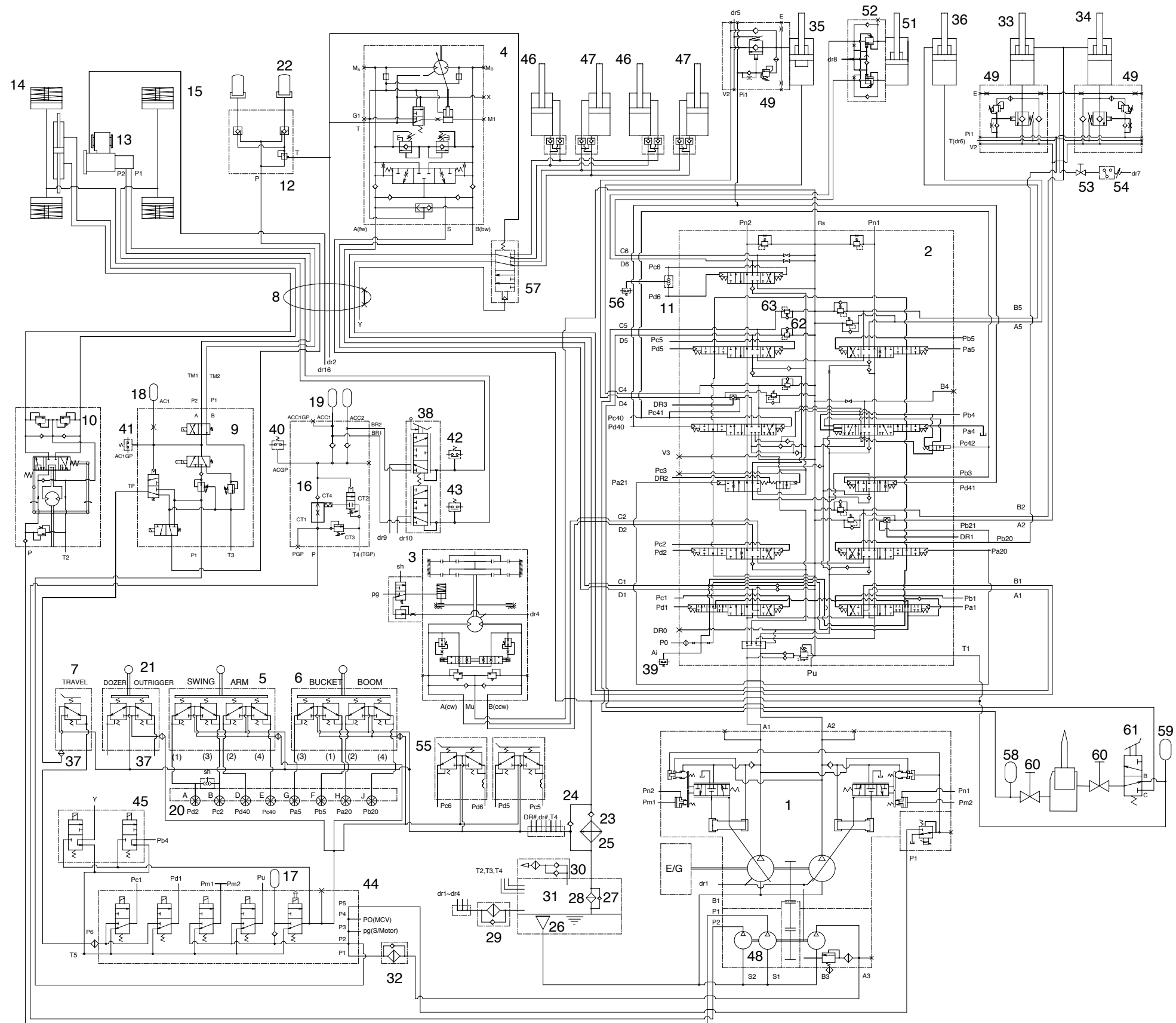
SECTION 3 HYDRAULIC SYSTEM



Group 1	Hydraulic Circuit	-----	3-1
Group 2	Main Circuit	-----	3-2
Group 3	Pilot Circuit	-----	3-5
Group 4	Single Operation	-----	3-13
Group 5	Combined Operation	-----	3-28

SECTION 3 HYDRAULIC SYSTEM

GROUP 1 HYDRAULIC CIRCUIT



- 1 Main pump
- 2 Main control valve
- 3 Swing motor
- 4 Travel motor
- 5 RCV lever-LH
- 6 RCV lever-RH
- 7 RCV pedal
- 8 Turning joint
- 9 Transmission control valve
- 10 Steering valve
- 11 Shuttle valve
- 12 Locking valve
- 13 Transmission
- 14 Front axle
- 15 Rear axle
- 16 Brake supply valve
- 17 Accumulator
- 18 Accumulator
- 19 Accumulator
- 20 Terminal
- 21 RCV dozer
- 22 Oscillating cylinder
- 23 Check valve
- 24 Check valve
- 25 Oil cooler
- 26 Strainer
- 27 Bypass valve
- 28 Return filter
- 29 Spin filter
- 30 Air breather
- 31 Hydraulic tank
- 32 Line filter
- 33 Boom cylinder-LH
- 34 Boom cylinder-RH
- 35 Arm cylinder
- 36 Bucket cylinder
- 37 Last gaurd filter
- 38 Brake valve
- 39 Pressure switch
- 40 Pressure switch
- 41 Pressure switch
- 42 Pressure switch
- 43 Pressure switch
- 44 5-Cartridge valve
- 45 2-Cartridge valve
- 46 Outrigger cylinder-LH
- 47 Outrigger cylinder-RH
- 48 Gear pump
- 49 Safety lock valve
- 51 2 Pcs boom cylinder
- 52 Safety lock valve
- 53 Shut off valve
- 54 Pressure switch
- 55 Option pedal
- 56 Pressure switch
- 57 Selector valve
- 58 Accumulator
- 59 Accumulator
- 60 Stop valve
- 61 Selector valve
- 62 Port relief valve
- 63 Port relief valve

14W73HC01A