

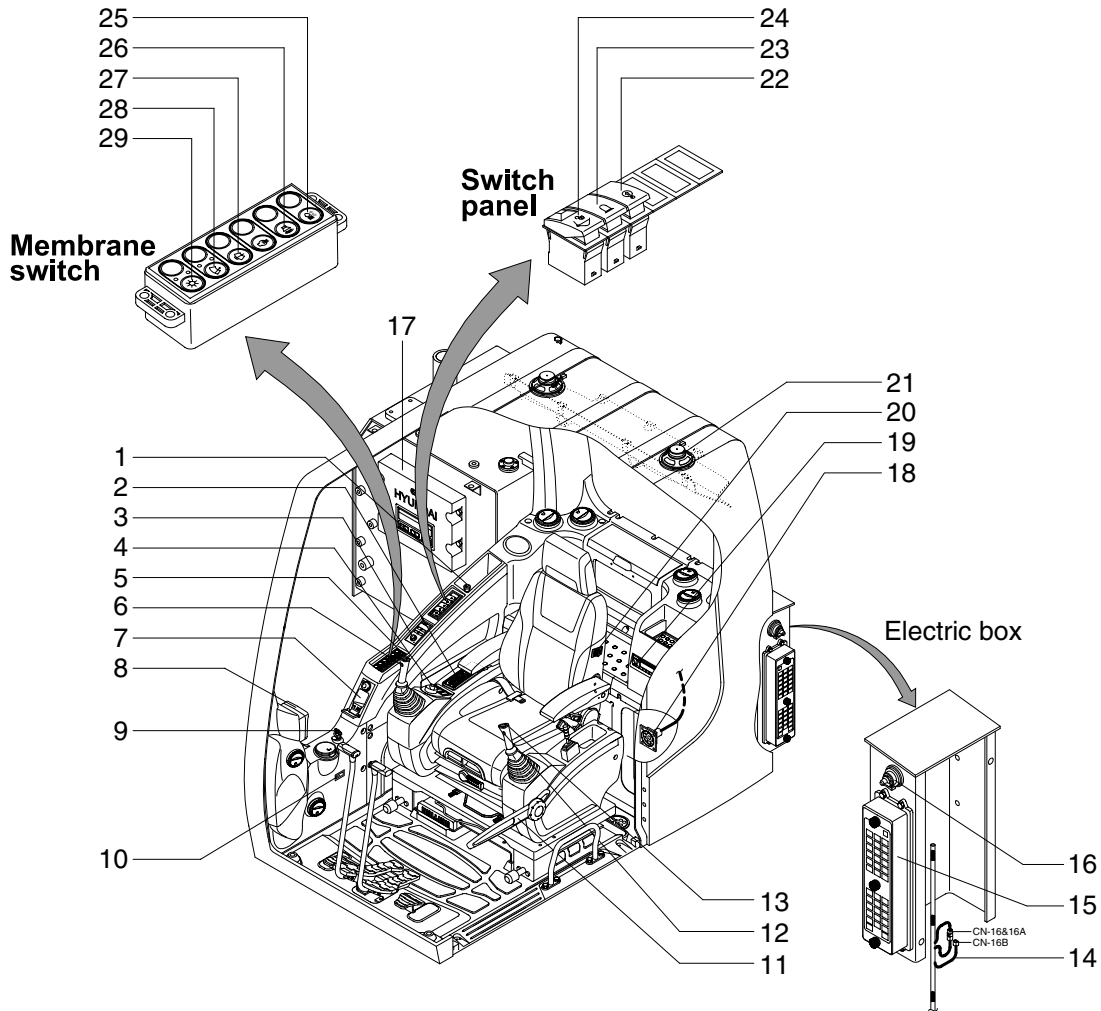
## SECTION 4 ELECTRICAL SYSTEM

|  |      |
|--|------|
| Group 1 Component Location .....                 | 4-1  |
| Group 2 Electrical Circuit .....                 | 4-3  |
| Group 3 Electrical Component Specification ..... | 4-21 |
| Group 4 Connectors .....                         | 4-29 |

# SECTION 4 ELECTRICAL SYSTEM

## GROUP 1 COMPONENT LOCATION

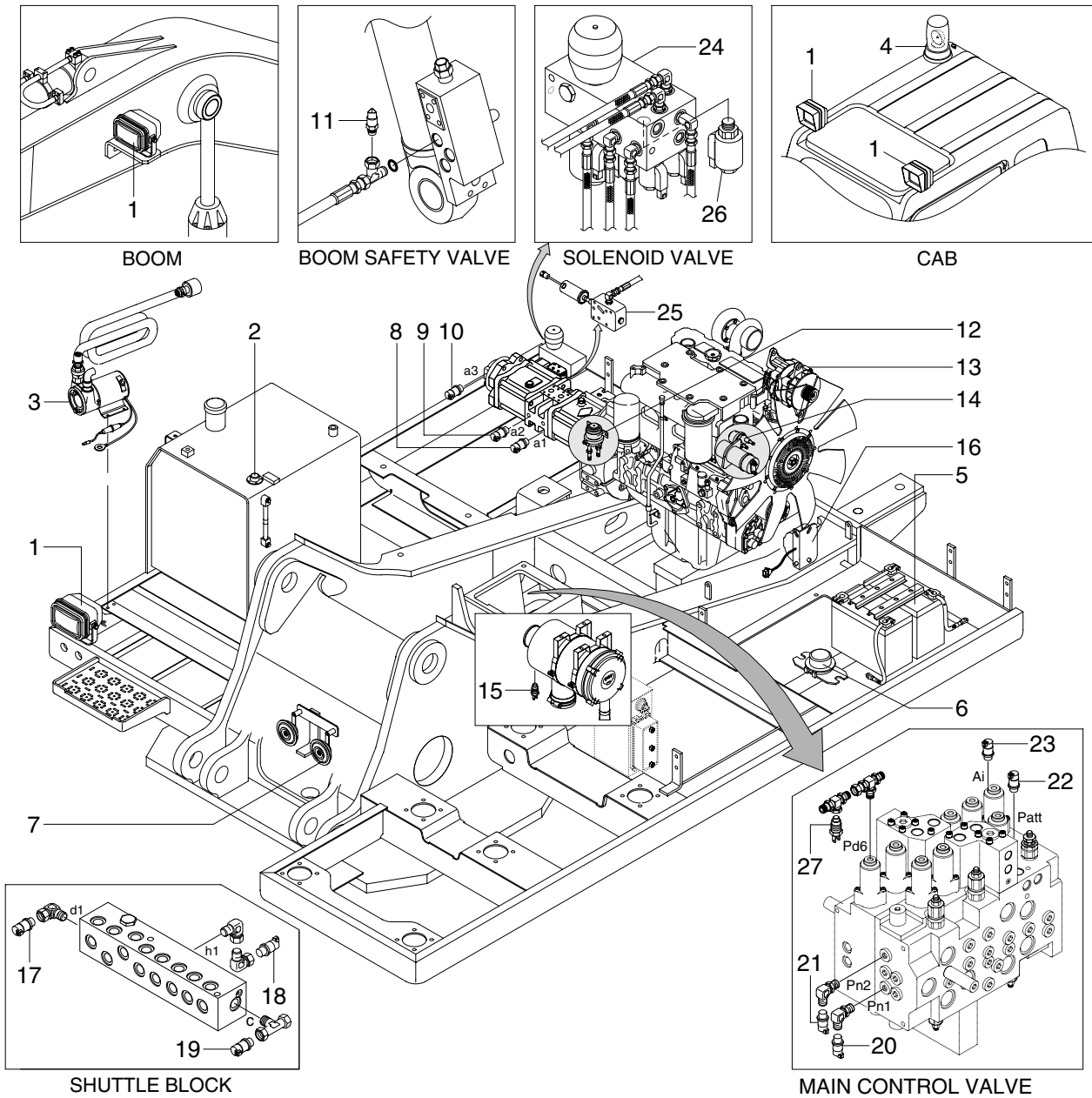
### 1. LOCATION 1



14094EL01

- |                            |                                 |                        |
|----------------------------|---------------------------------|------------------------|
| 1 Cigar lighter            | 11 Safety lever                 | 21 Speaker             |
| 2 Air conditioner switch   | 12 Power max switch             | 22 Overload switch     |
| 3 Remote controller        | 13 One touch decel switch       | 23 Beacon switch       |
| 4 Accel dial switch        | 14 Emergency engine connector   | 24 Quick clamp switch  |
| 5 Horn switch              | 15 Fuse & relay box             | 25 Cab light switch    |
| 6 Breaker operation switch | 16 Master switch                | 26 Travel alarm switch |
| 7 Handsfree                | 17 Machine control unit         | 27 Washer switch       |
| 8 Cluster                  | 18 RS232 & J1939 service socket | 28 Wiper switch        |
| 9 Start switch             | 19 Radio & CD/MP3 player        | 29 Main light switch   |
| 10 Hour meter              | 20 Heated seat switch           |                        |

## 2. LOCATION 2



14094EL02

- |                      |                                  |                               |
|----------------------|----------------------------------|-------------------------------|
| 1 Lamp               | 10 P3 pressure sensor            | 19 Swing pressure sensor      |
| 2 Fuel sender        | 11 Overload pressure sensor      | 20 Negative 1 pressure sensor |
| 3 Fuel filler pump   | 12 Heater relay                  | 21 Negative 2 pressure sensor |
| 4 Beacon lamp        | 13 Alternator                    | 22 Attach pressure sensor     |
| 5 Battery            | 14 Start relay                   | 23 Travel pressure sensor     |
| 6 Battery relay      | 15 Air cleaner switch            | 24 Solenoid valve             |
| 7 Horn               | 16 Travel alarm buzzer           | 25 Pump EPPR valve            |
| 8 P1 pressure sensor | 17 Arm/Bucket in pressure sensor | 26 Boom priority EPPR valve   |
| 9 P2 pressure sensor | 18 Boom up pressure sensor       | 27 Dozer pressure switch      |