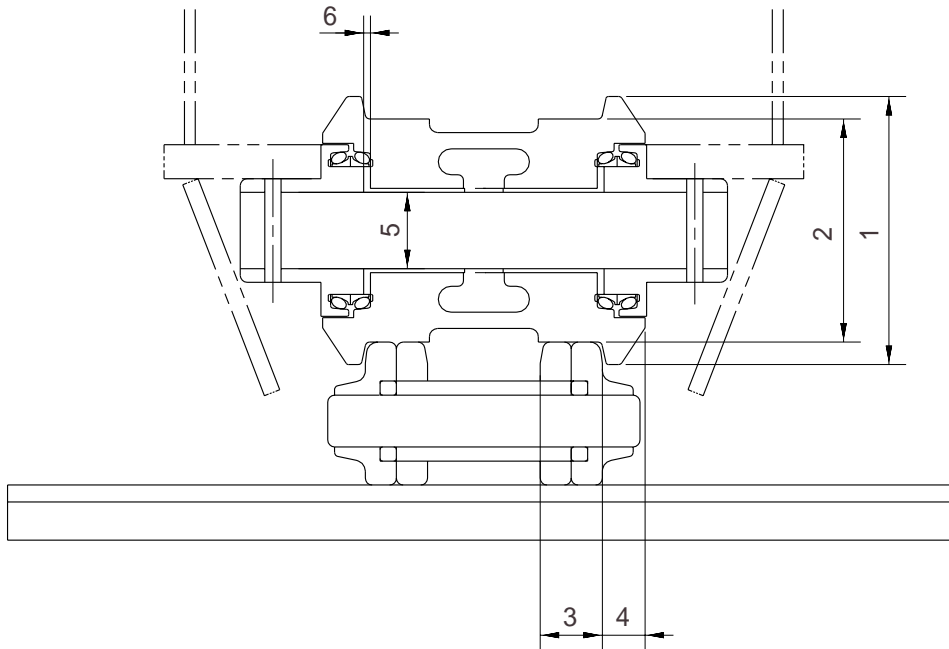


GROUP 3 TRACK AND WORK EQUIPMENT

1. TRACK

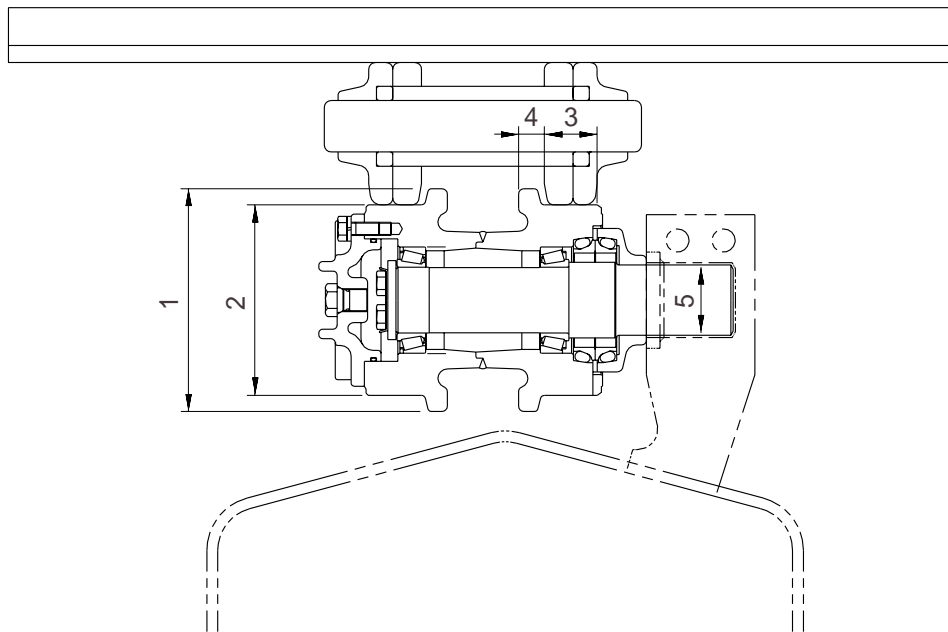
1) TRACK ROLLER



Unit : mm

| No. | Check item | Criteria | | | | Remedy |
|-----|--------------------------------------|----------------------|-----------|------------------|--------------------------------------|------------------------|
| | | Standard size | | Repair limit | | |
| 1 | Outside diameter of flange | Ø185 | | - | | Rebuild or replace |
| 2 | Outside diameter of tread | Ø150 | | Ø138 | | |
| 3 | Width of tread | 36.5 | | 42.5 | | |
| 4 | Width of flange | 22 | | - | | |
| 5 | Clearance between shaft and bushing | Standard size Ø60 | tolerance | | Standard clearance 0.021 to 0.050 | Clearance limit 1.5 |
| | | | Shaft | Hole | | |
| | | | 0 | +0.031 +0.021 | | |
| 6 | Side clearance of roller (Both side) | Standard clearance | | Clearance limit | | Replace |
| | | 0.2 to 0.6 | | 1.5 | | |

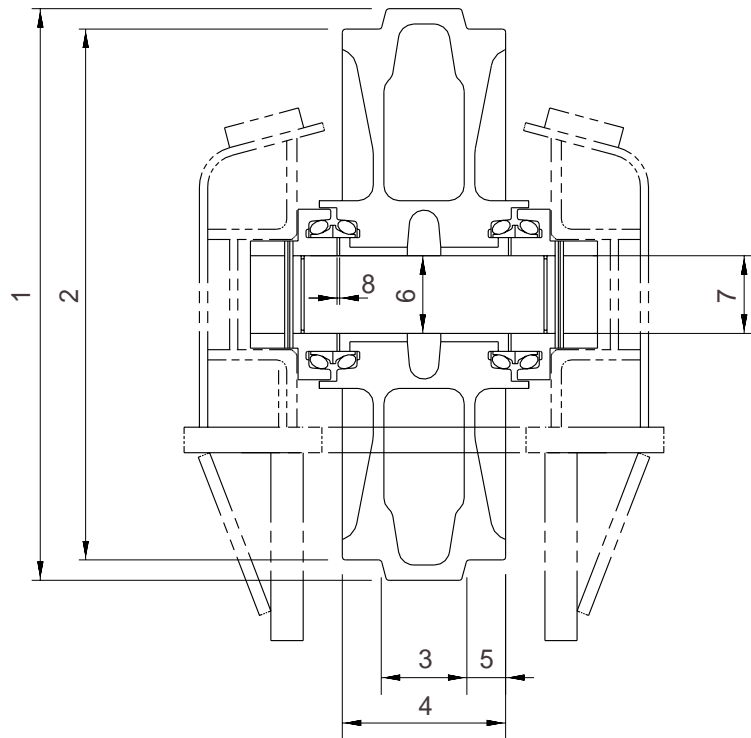
2) CARRIER ROLLER



Unit : mm

| No. | Check item | Criteria | | | Remedy | |
|-----|-------------------------------------|---------------------------|------------------------|--------------------|--------------------|-----------------|
| | | Standard size | | Repair limit | | |
| 1 | Outside diameter of flange | Ø175 | | - | Rebuild or replace | |
| 2 | Outside diameter of tread | Ø151 | | Ø141 | | |
| 3 | Width of tread | 37.25 | | 45 | | |
| 4 | Width of flange | 18.25 | | - | | |
| 5 | Clearance between shaft and bushing | Standard size & Tolerance | | Standard clearance | Clearance limit | Replace bushing |
| | | Shaft | Hole | | | |
| | | Ø41.27 +0.003 +0.017 | Ø41.5 +0.003 +0.002 | 0.229 to 0.25 | 1.2 | |

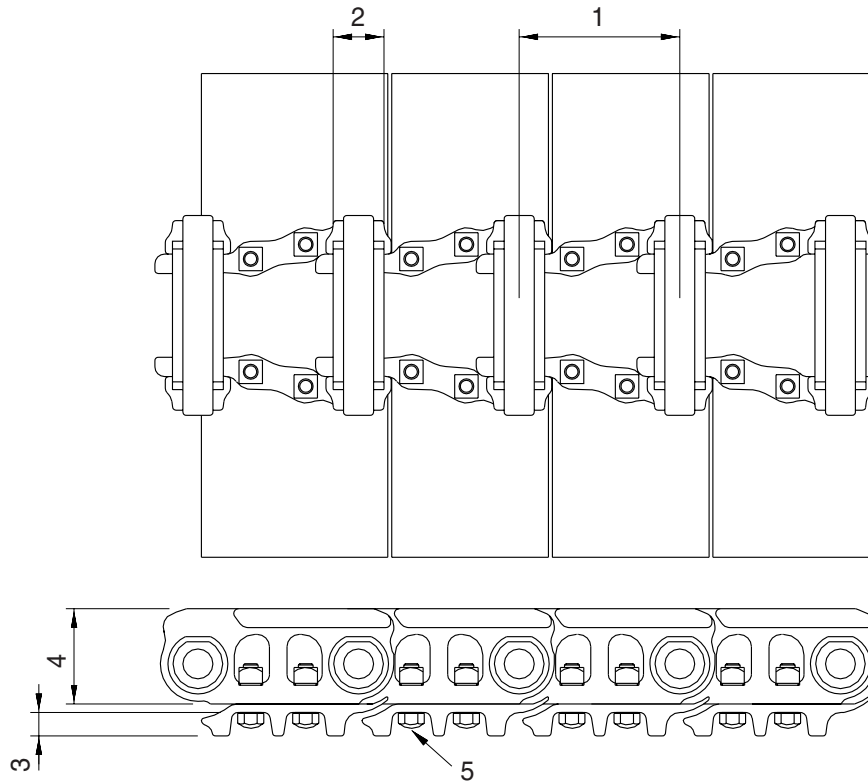
3) IDLER



Unit : mm

| No. | Check item | Criteria | | Remedy | | |
|-----|-------------------------------------|-----------------------------------|---------------------------------------|--------------------|-----------------|-----------------|
| | | Standard size | Repair limit | | | |
| 1 | Outside diameter of protrusion | Ø552 | - | Rebuild or replace | | |
| 2 | Outside diameter of tread | Ø507 | Ø501 | | | |
| 3 | Width of protrusion | 67 | - | | | |
| 4 | Total width | 135 | - | | | |
| 5 | Width of tread | 34 | 40 | | | |
| 6 | Clearance between shaft and bushing | Standard size & tolerance | | Standard clearance | Clearance limit | Replace bushing |
| | | Shaft | Hole | | | |
| | | Ø70 ⁰ _{-0.03} | Ø70.3 ^{+0.05} ₀ | 0.3 to 0.38 | 2.0 | |
| 7 | Clearance between shaft and support | Ø70 ⁰ _{-0.03} | Ø70 ^{+0.07} _{+0.03} | 0.03 to 0.1 | 1.2 | Replace |
| 8 | Side clearance of idler (Both side) | Standard clearance | | Clearance limit | | Replace bushing |
| | | 0.4 to 1.0 | | 2.0 | | |

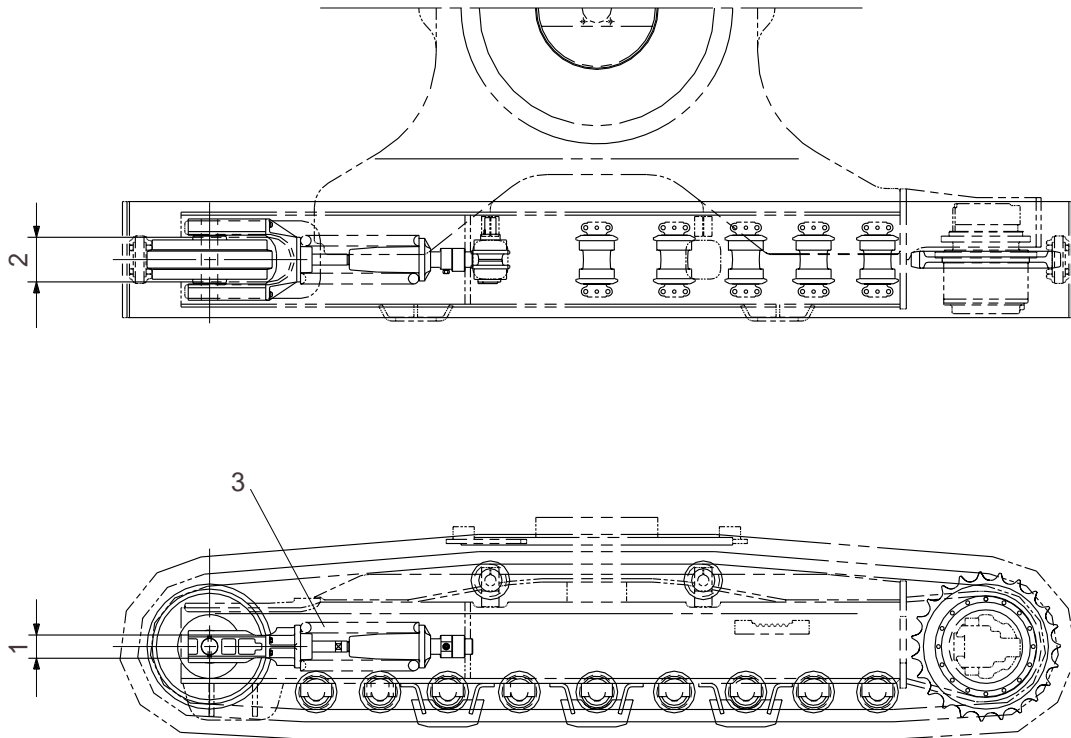
4) TRACK



Unit : mm

| No. | Check item | Criteria | | Remedy |
|-----|--|---|--------------|--------------------|
| | | Standard size | Repair limit | |
| 1 | Link pitch | 171.45 | 175.65 | Turn or replace |
| 2 | Outside diameter of bushing | ∅ 53.75 | ∅ 43.95 | |
| 3 | Height of grouser | 25 | 16 | Rebuild or replace |
| 4 | Height of link | 94.5 | 86.5 | |
| 5 | Tightening torque (Tightening angle method) | Initial tightening torque : 42 ± 4 kgf · m Additional tightening angle : 32° | | Retighten |

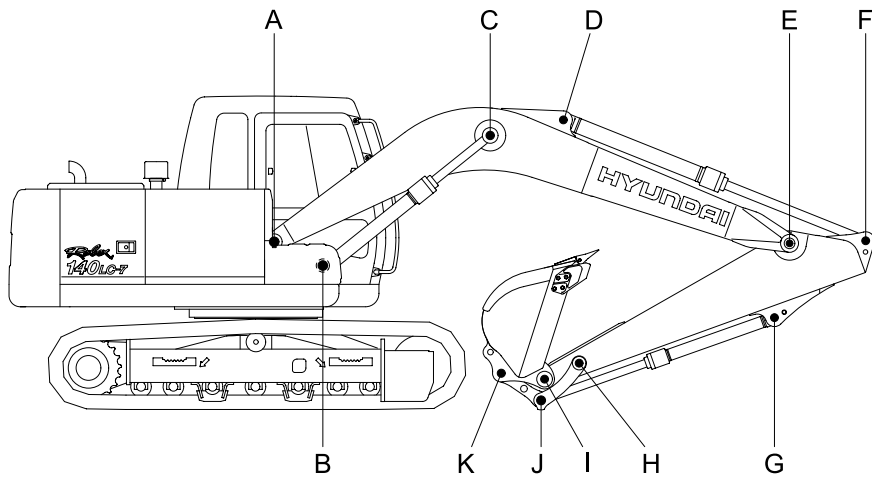
5) TRACK FRAME AND RECOIL SPRING



Unit : mm

| No. | Check item | Criteria | | | | Remedy | |
|-----|---------------------------------|---------------|---------------------|-------------------|--------------|--------------------|-------------------|
| | | | Standard size | Tolerance | Repair limit | | |
| 1 | Vertical width of idler guide | Track frame | 103 | +2 0 | 107 | Rebuild or replace | |
| | | Idler support | 100 | -0.5 -1.0 | 96 | | |
| 2 | Horizontal width of idler guide | Track frame | 192 | +2 0 | 197 | | |
| | | Idler support | 190 | +0.5 -0.5 | 187 | | |
| 3 | Recoil spring | Standard size | | Repair limit | | Replace | |
| | | Free length | Installation length | Installation load | Free length | | Installation load |
| | | Ø192 x 410 | 405 | 8,497kg | - | | 7,817kg |

2. WORK EQUIPMENT



Unit : mm

| Mark | Measuring point (Pin and Bushing) | Normal value | Pin | | Bushing | | Remedy & Remark |
|------|--------------------------------------|-----------------|-----------------------------|-----------------|-----------------------------|-----------------|-----------------------|
| | | | Recomm. service limit | Limit of use | Recomm. service limit | Limit of use | |
| A | Boom Rear | 70 | 69 | 68.5 | 70.5 | 71 | Replace |
| B | Boom Cylinder Head | 70 | 69 | 68.5 | 70.5 | 71 | " |
| C | Boom Cylinder Rod | 70 | 69 | 68.5 | 70.5 | 71 | " |
| D | Arm Cylinder Head | 70 | 69 | 68.5 | 70.5 | 71 | " |
| E | Boom Front | 70 | 69 | 68.5 | 70.5 | 71 | " |
| F | Arm Cylinder Rod | 70 | 69 | 68.5 | 70.5 | 71 | " |
| G | Bucket Cylinder Head | 70 | 69 | 68.5 | 70.5 | 71 | " |
| H | Arm Link | 65 | 64 | 63.5 | 65.5 | 66 | " |
| I | Bucket and Arm Link | 65 | 64 | 63.5 | 65.5 | 66 | " |
| J | Bucket Cylinder Rod | 70 | 69 | 68.5 | 70.5 | 71 | " |
| K | Bucket Link | 65 | 64 | 63.5 | 65.5 | 66 | " |