

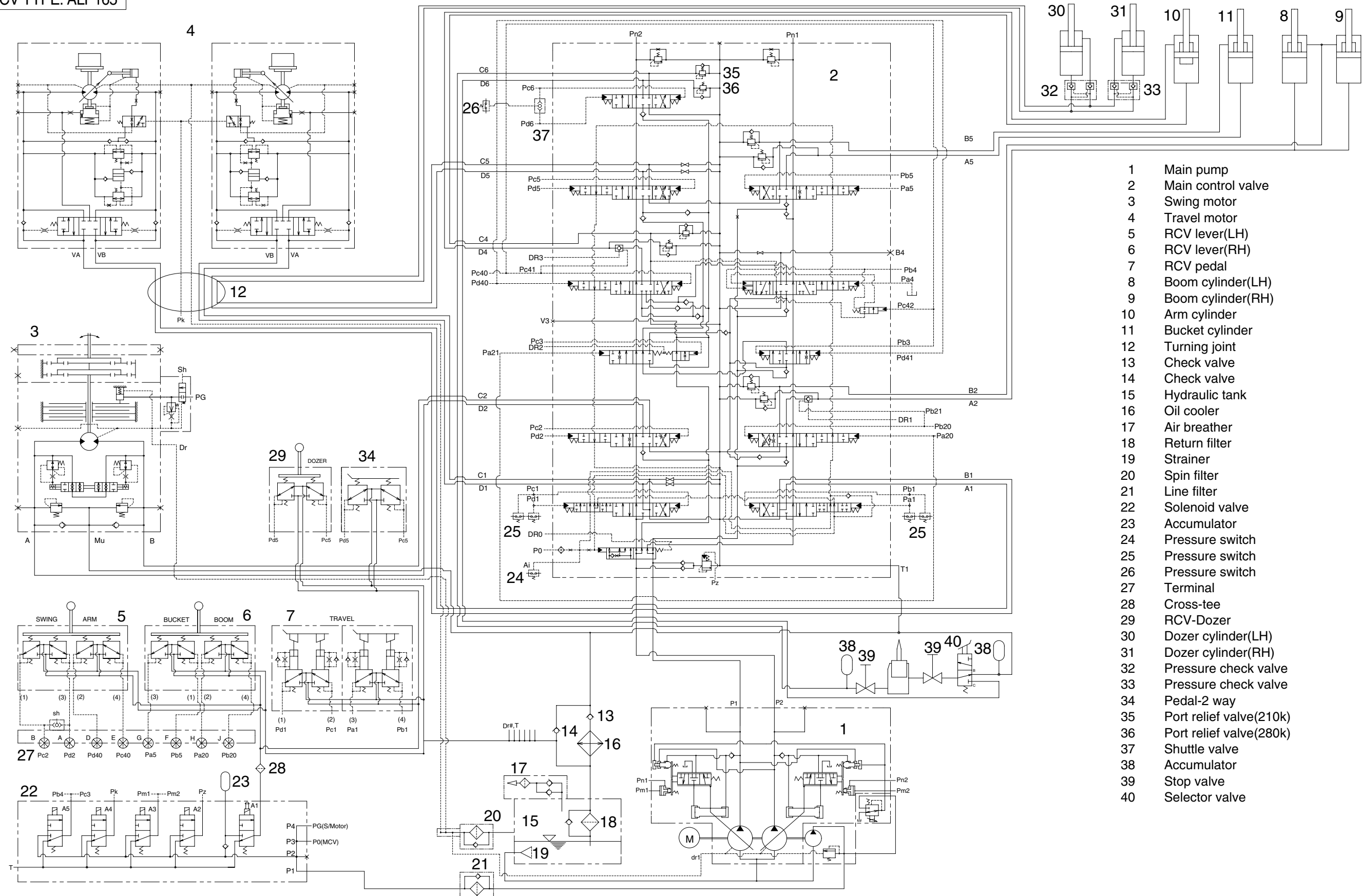
SECTION 3 HYDRAULIC SYSTEM

Group 1 Hydraulic Circuit	3-1
Group 2 Main Circuit	3-2
Group 3 Pilot Circuit	3-5
Group 4 Single Operation	3-13
Group 5 Combined Operation	3-25

SECTION 3 HYDRAULIC SYSTEM

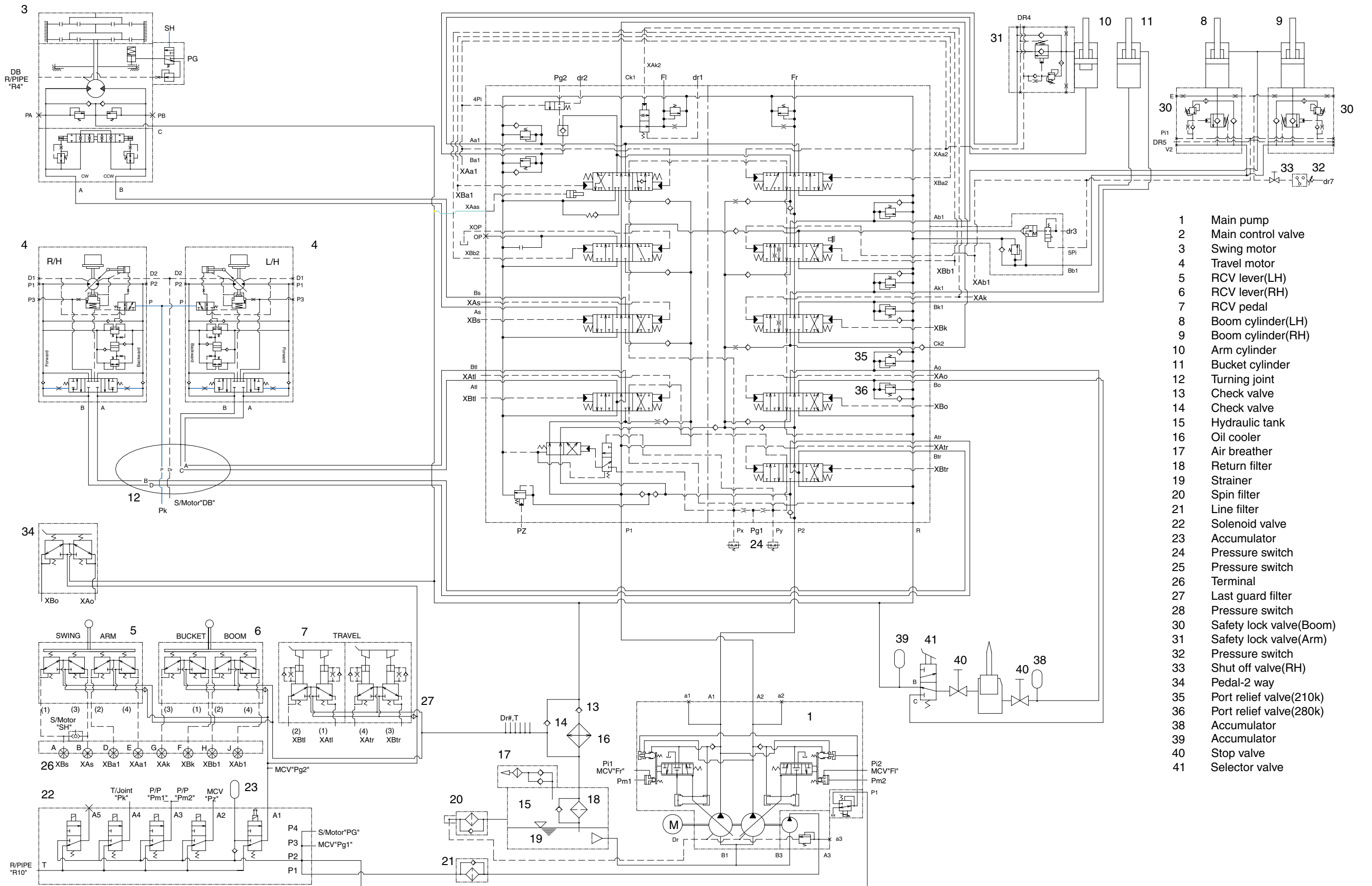
GROUP 1 HYDRAULIC CIRCUIT

MCV TYPE: ALP165



- 1 Main pump
- 2 Main control valve
- 3 Swing motor
- 4 Travel motor
- 5 RCV lever(LH)
- 6 RCV lever(RH)
- 7 RCV pedal
- 8 Boom cylinder(LH)
- 9 Boom cylinder(RH)
- 10 Arm cylinder
- 11 Bucket cylinder
- 12 Turning joint
- 13 Check valve
- 14 Check valve
- 15 Hydraulic tank
- 16 Oil cooler
- 17 Air breather
- 18 Return filter
- 19 Strainer
- 20 Spin filter
- 21 Line filter
- 22 Solenoid valve
- 23 Accumulator
- 24 Pressure switch
- 25 Pressure switch
- 26 Pressure switch
- 27 Terminal
- 28 Cross-tee
- 29 RCV-Dozer
- 30 Dozer cylinder(LH)
- 31 Dozer cylinder(RH)
- 32 Pressure check valve
- 33 Pressure check valve
- 34 Pedal-2 way
- 35 Port relief valve(210k)
- 36 Port relief valve(280k)
- 37 Shuttle valve
- 38 Accumulator
- 39 Stop valve
- 40 Selector valve

MCV TYPE: UHX22-26



- 1 Main pump
- 2 Main control valve
- 3 Swing motor
- 4 Travel motor
- 5 RCV lever(LH)
- 6 RCV lever(RH)
- 7 RCV pedal
- 8 Boom cylinder(LH)
- 9 Boom cylinder(RH)
- 10 Arm cylinder
- 11 Bucket cylinder
- 12 Turning joint
- 13 Check valve
- 14 Check valve
- 15 Hydraulic tank
- 16 Oil cooler
- 17 Air breather
- 18 Return filter
- 19 Strainer
- 20 Spin filter
- 21 Line filter
- 22 Solenoid valve
- 23 Accumulator
- 24 Pressure switch
- 25 Pressure switch
- 26 Terminal
- 27 Last guard filter
- 28 Pressure switch
- 30 Safety lock valve(Boom)
- 31 Safety lock valve(Arm)
- 32 Pressure switch
- 33 Shut off valve(RH)
- 34 Pedal-2 way
- 35 Port relief valve(210k)
- 36 Port relief valve(280k)
- 38 Accumulator
- 39 Accumulator
- 40 Stop valve
- 41 Selector valve