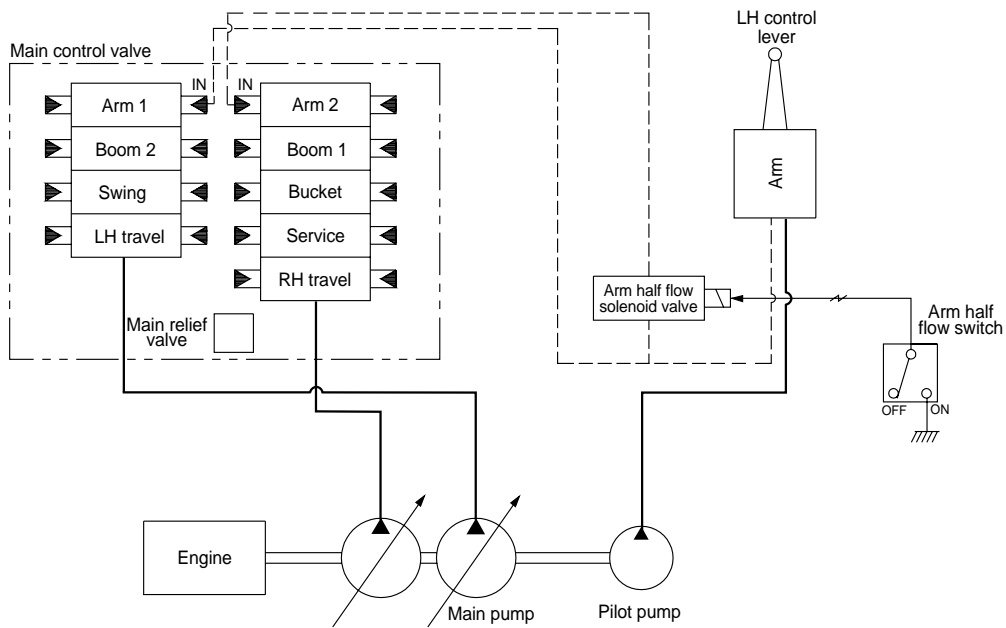


GROUP 8 ARM HALF FLOW SYSTEM



When arm half flow switch is turned ON, the arm half flow solenoid valve is switched to ON and it cancels the junction of the oil flow from two pumps.

This function is useful for fine control of the arm-in operation in case of finishing work.

Mode	Boom		Arm		Bucket	Swing	Travel		
	up	down	in				out	LH	RH
			ON	OFF					
H	200	100	100	200	200	100	100	100	
S									
L									
F									

※ The portion for one pump is taken as 100%.