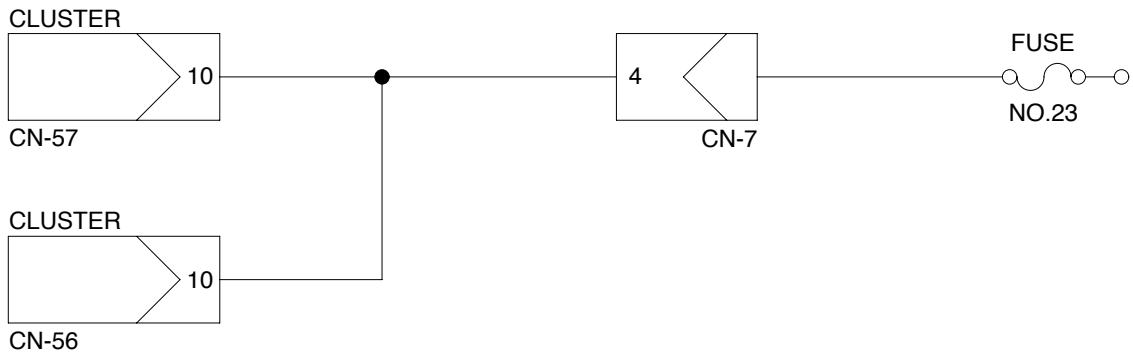
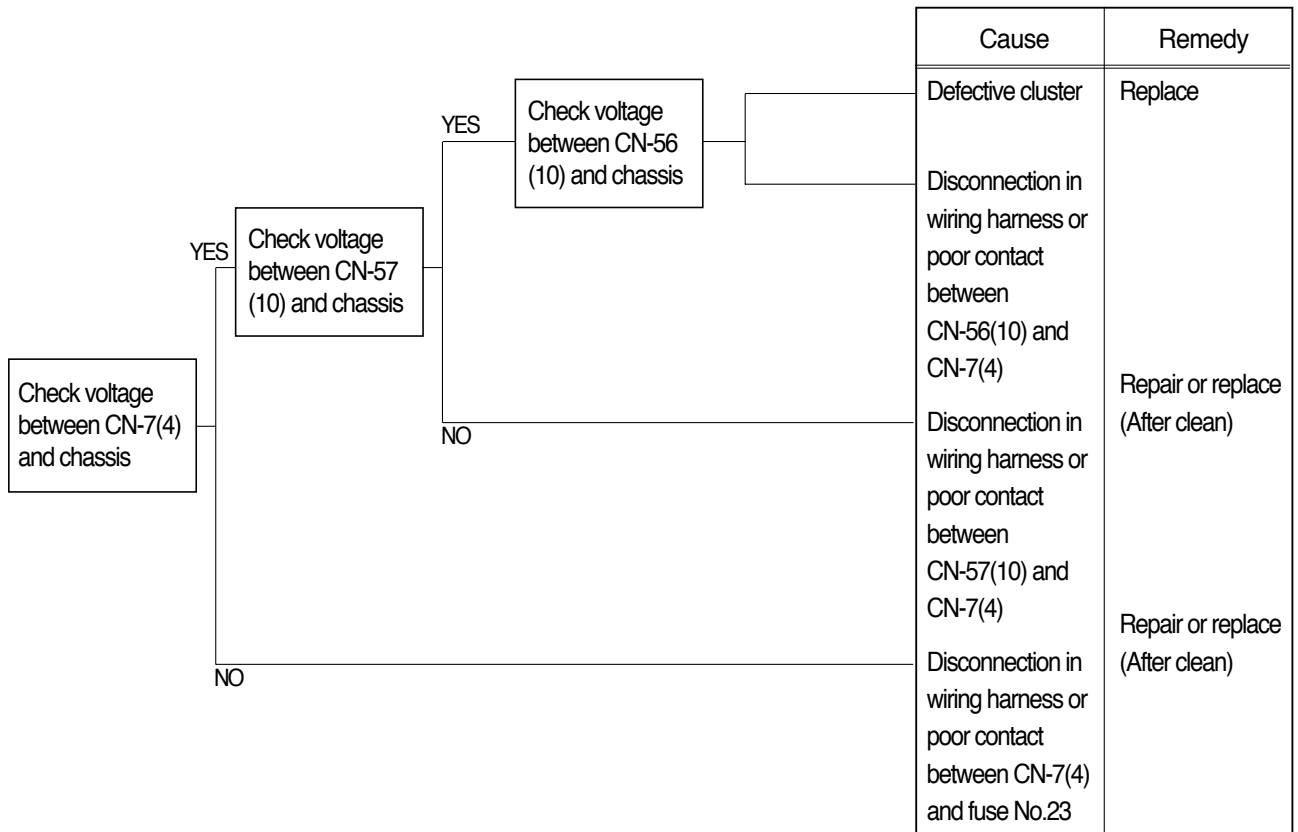


GROUP 6 TROUBLESHOOTING

1. WHEN STARTING SWITCH IS TURNED ON, CLUSTER LAMP DOES NOT LIGHT UP

- Before carrying out below procedure, check all the related connectors are properly inserted and the fuse No.23 is not blown out and ON/OFF of bulb.
- After checking, connect the disconnected connectors again immediately unless otherwise specified.

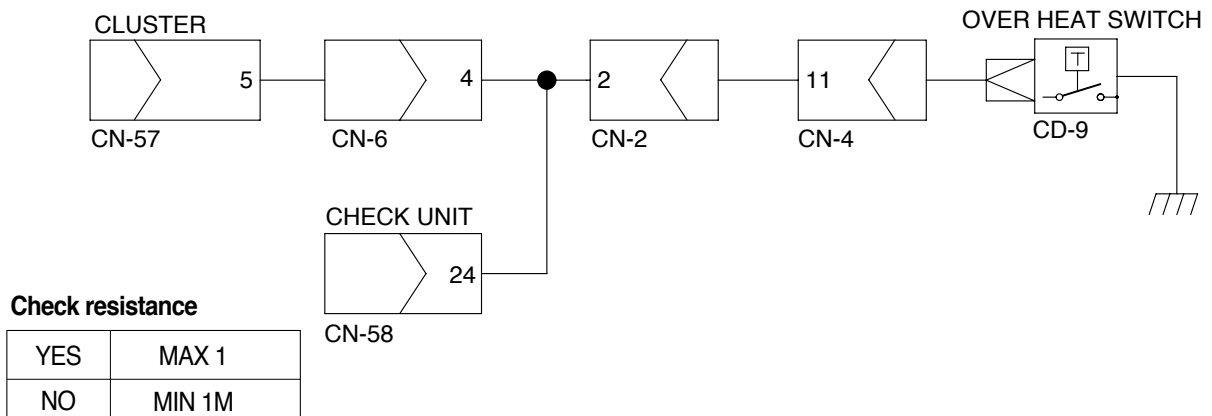
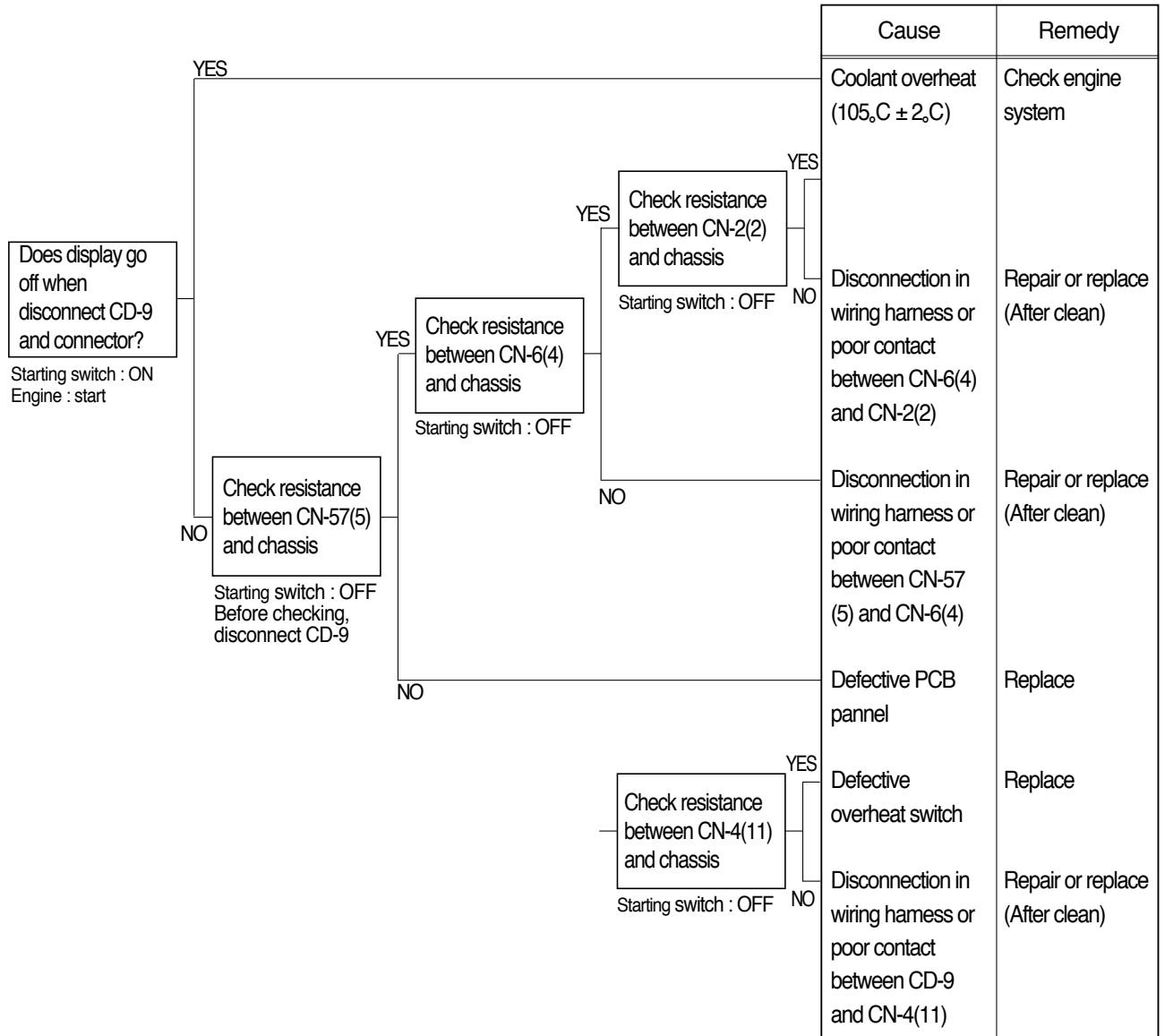


Check voltage

YES	20 ~ 30V
NO	0V

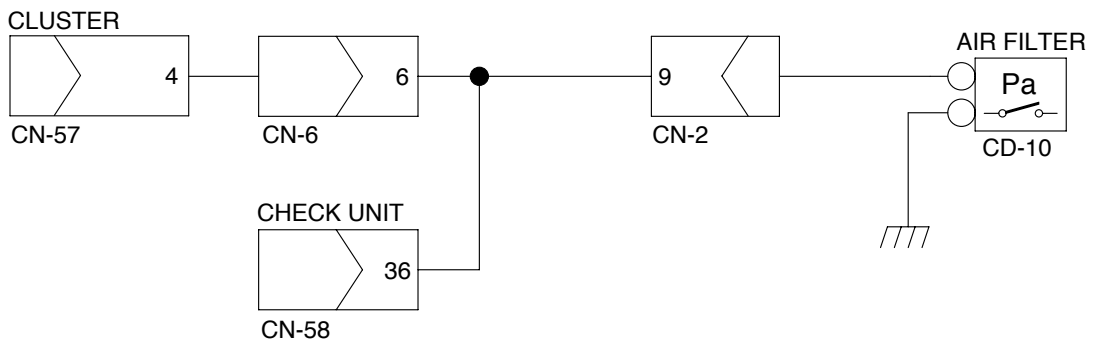
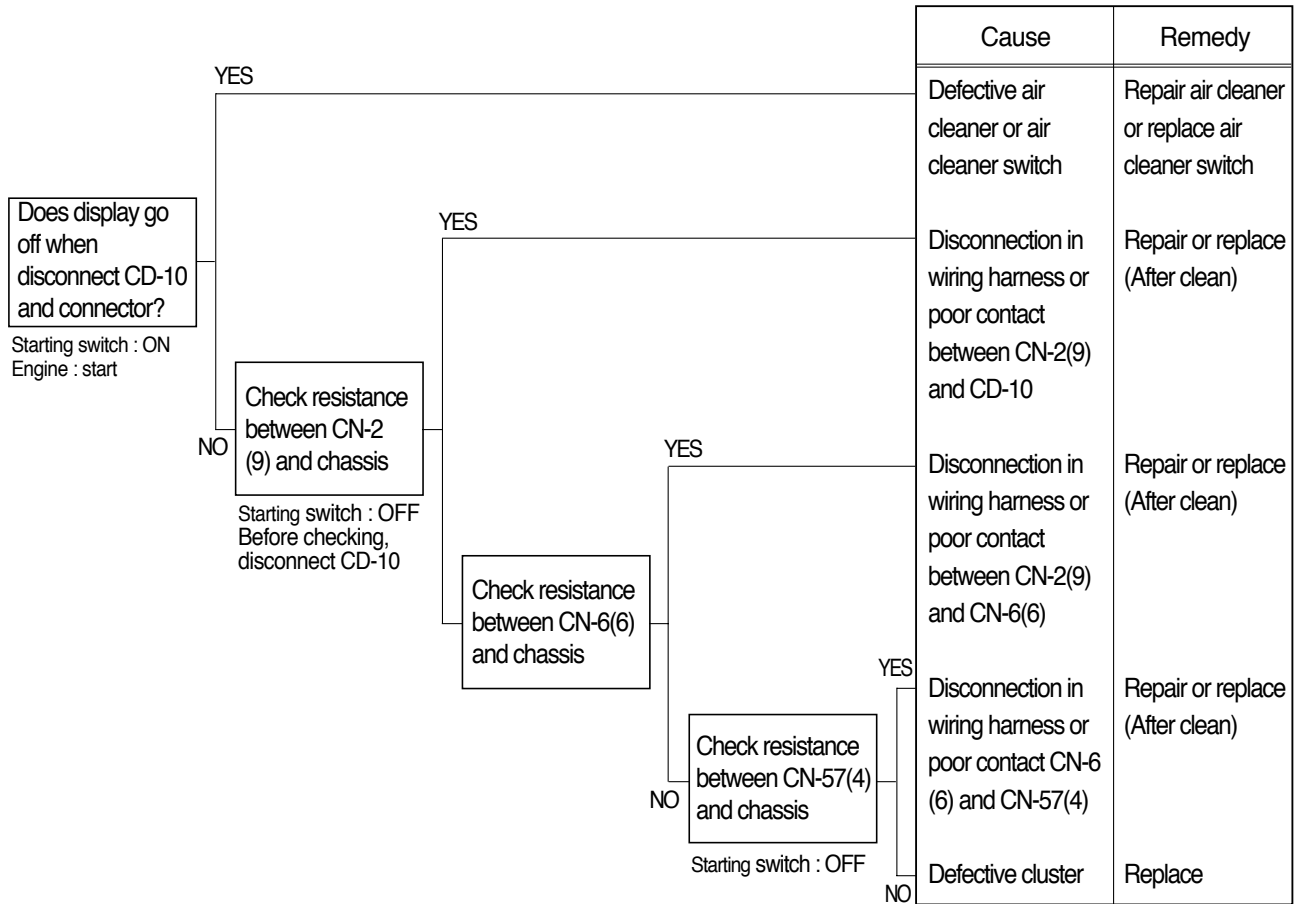
2. WHEN COOLANT OVERHEAT LAMP LIGHTS UP(Engine is started)

- Before carrying out below procedure, check all the related connectors are properly inserted.
- After checking, connect the disconnected connectors again immediately unless otherwise specified.



3. WHEN AIR CLEANER LAMP LIGHTS UP(Engine is started)

- Before carrying out below procedure, check all the related connectors are properly inserted.
- After checking, connect the disconnected connectors again immediately unless otherwise specified.

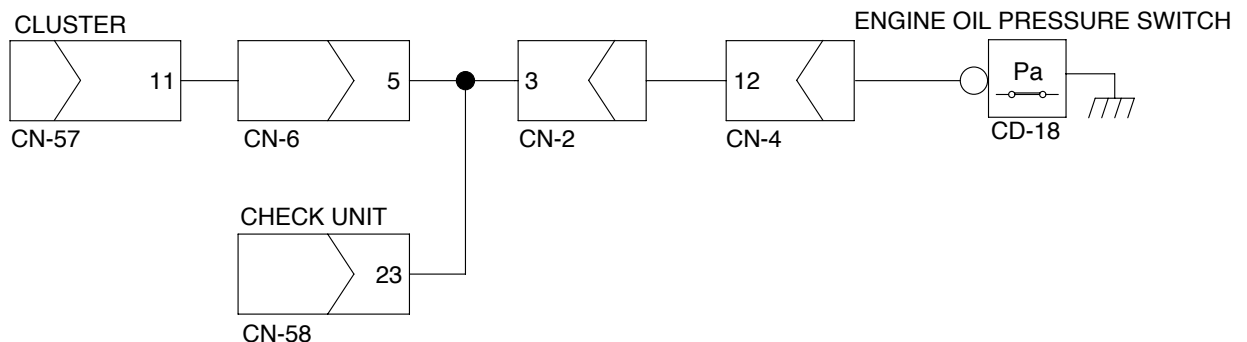
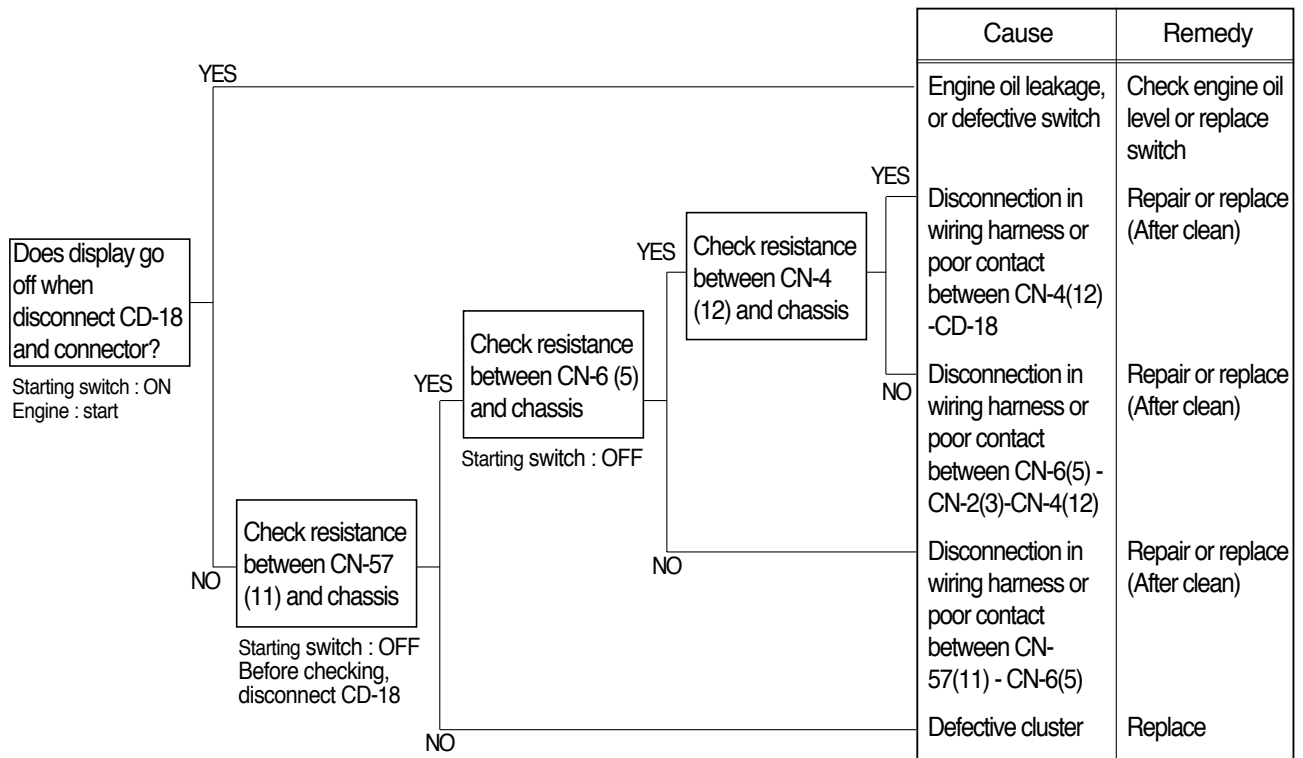


Check resistance

YES	MAX 1
NO	MIN 1M

4. WHEN ENGINE OIL PRESSURE LAMP LIGHTS UP(Engine is started)

- Before carrying out below procedure, check all the related connectors are properly inserted.
- After checking, connect the disconnected connectors again immediately unless otherwise specified.

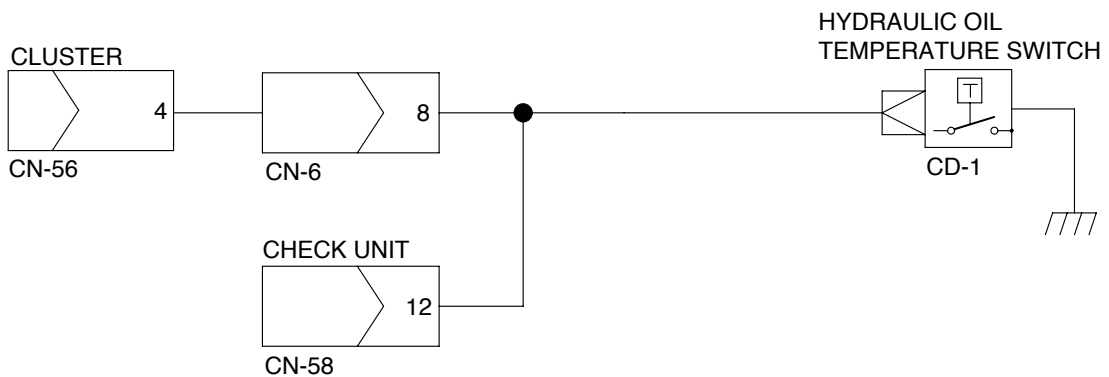
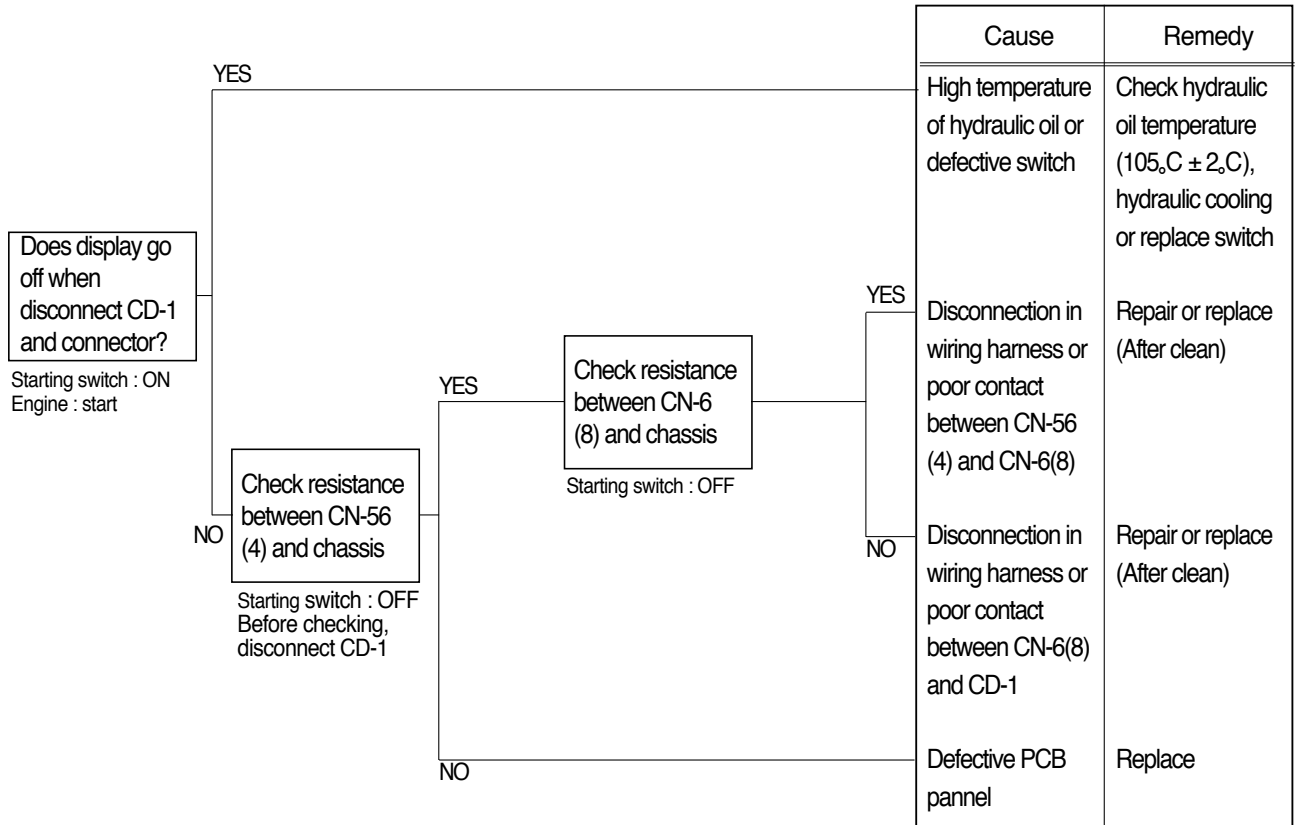


Check resistance

YES	MAX 1
NO	MIN 1M

5.  WHEN HYDRAULIC OIL TEMPERATURE LAMP LIGHTS UP(Engine is started)

- Before carrying out below procedure, check all the related connectors are properly inserted.
- After checking, connect the disconnected connectors again immediately unless otherwise specified.



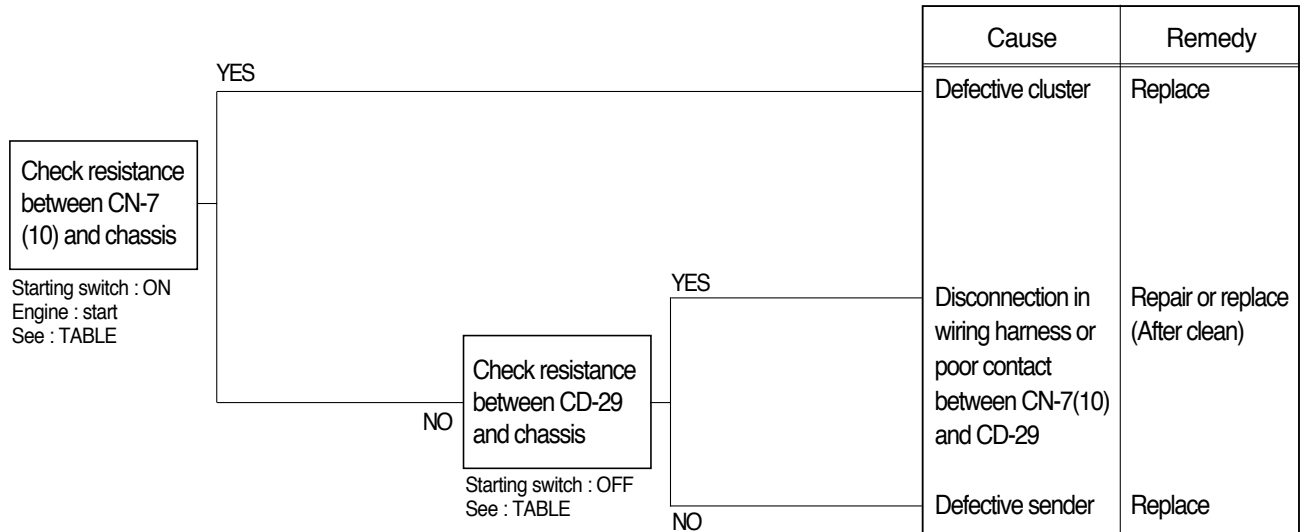
Check resistance

YES	MAX 1
NO	MIN 1M

6. WHEN TORQUE CONVERTER OIL TEMPERATURE GAUGE DOES NOT OPERATE

(Check torque converter oil temperature lamp ON/OFF)

- Before carrying out below procedure, check all the related connectors are properly inserted.
- After checking, connect the disconnected connectors again immediately unless otherwise specified.



Check resistance

YES	MAX 1
NO	MIN 1M

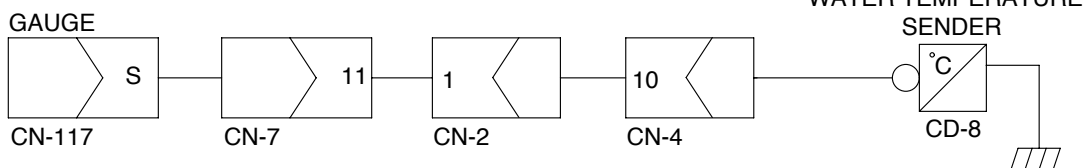
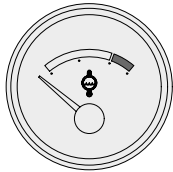
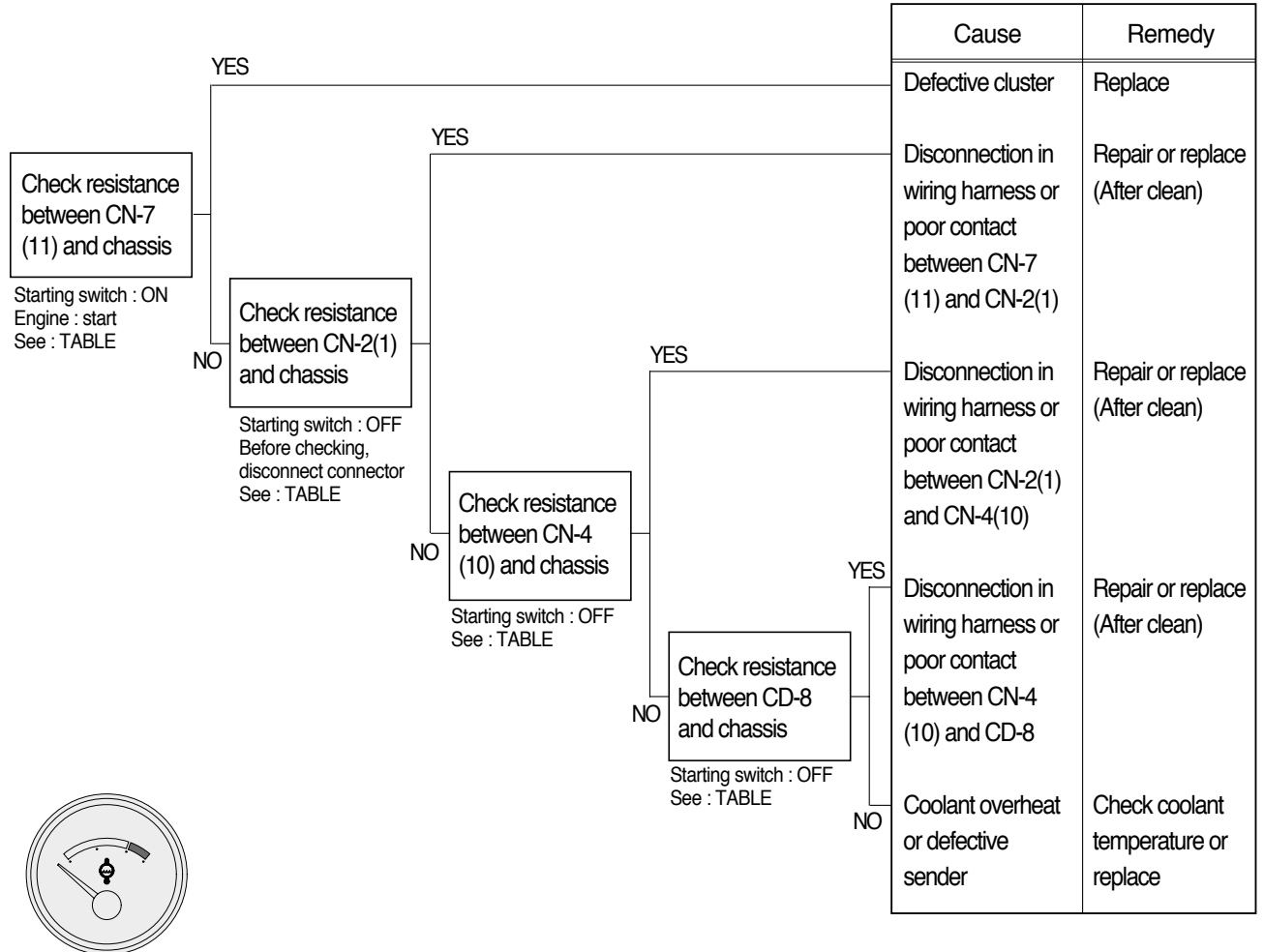
Check table

Temperature Item	50°C	92°C	120°C	130°C
Unit resistance()	168.7	(34)	19.5	12.4
Tolerance	0. ~ -10.	(-)	± 3.	+10. ~ 0.
Angle	-30.	-8.	+27.	+30.

7. WHEN COOLANT TEMPERATURE GAUGE DOES NOT OPERATE

(Check coolant temperature lamp ON/OFF)

- Before carrying out below procedure, check all the related connectors are properly inserted.
- After checking, connect the disconnected connectors again immediately unless otherwise specified.



Check resistance

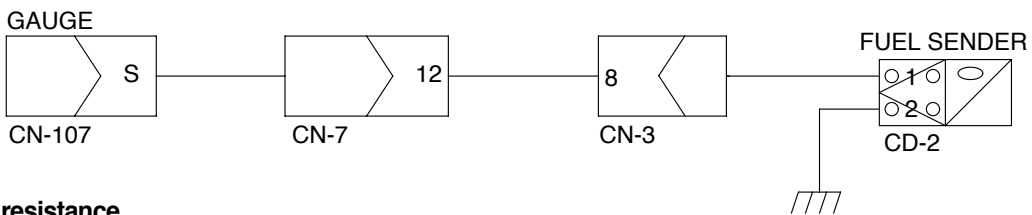
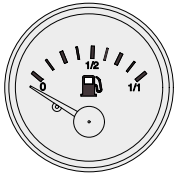
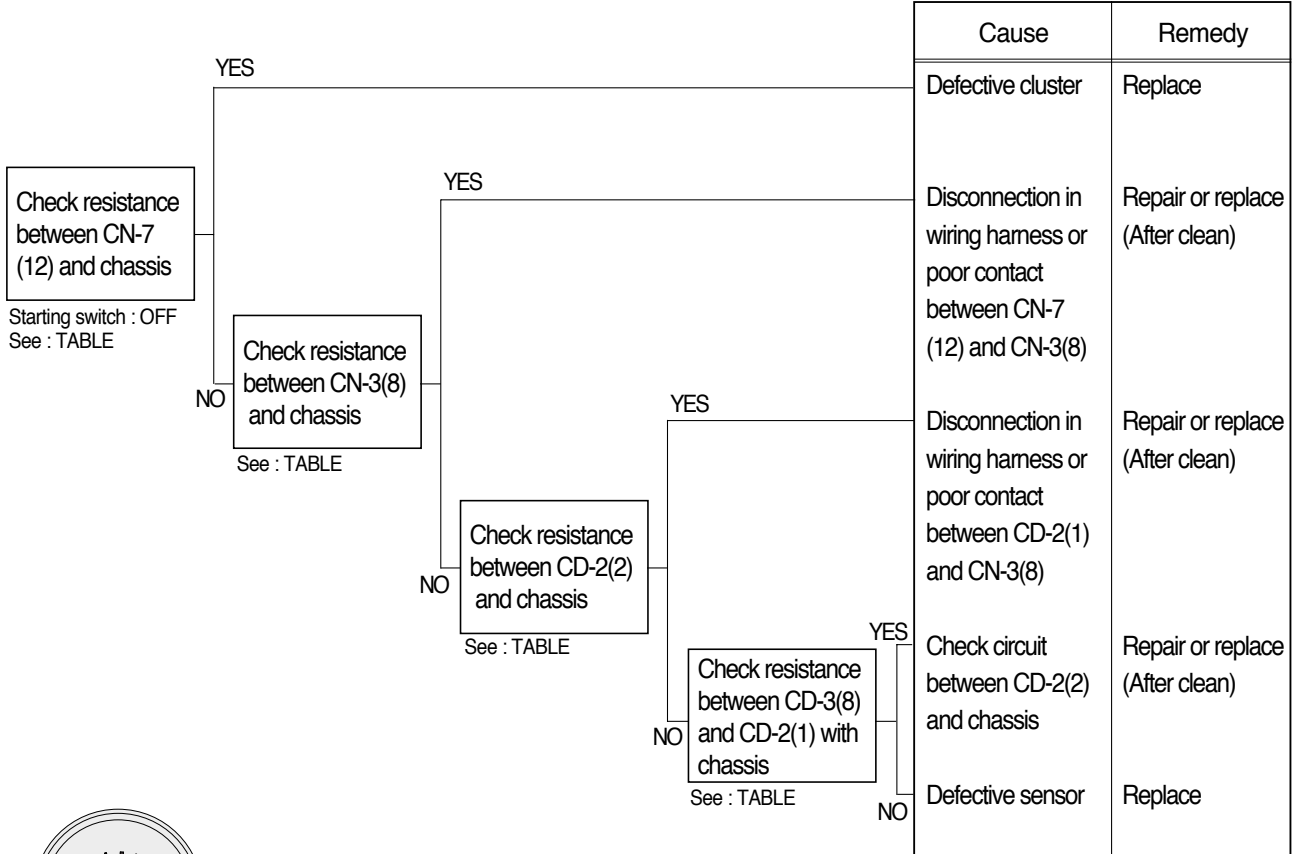
YES	MAX 1
NO	MIN 1M

Check table

Temperature Item	(40°C)	91°C	105°C	120°C
Unit resistance()	222	(41.3)	28	19.2
Tolerance	± 5%	(-)	± 4.5	(-)
Angle	-30°	0°	+13°	+30°

8. WHEN FUEL GAUGE DOES NOT OPERATE (Check warning lamp ON/OFF)

- Before carrying out below procedure, check all the related connectors are properly inserted.
- After checking, connect the disconnected connectors again immediately unless otherwise specified.



Check resistance

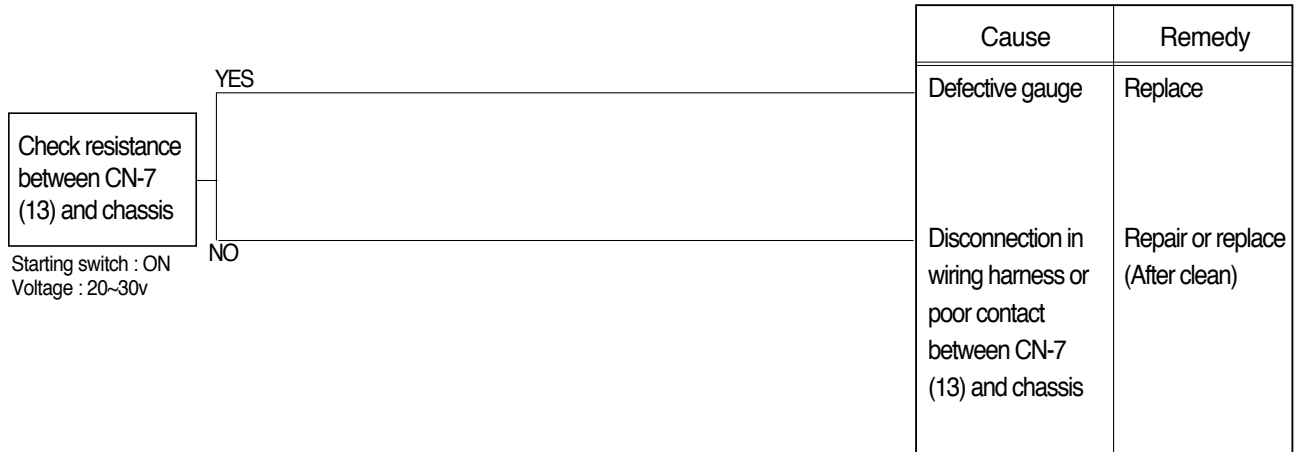
YES	MAX 1
NO	MIN 1M

Check table

Temperature Item	Empty	(1/2)	Full
Unit resistance()	95	(32.5)	7
Tolerance	± 2.5 _o	± 5 _o	± 2.5 _o
Angle	-30 _o	0 _o	+30 _o

9. WHEN GAUGES OF FUEL, HYDRAULIC OIL AND COOLANT INDICATE HIGH OR FULL

- Before carrying out below procedure, check all the related connectors are properly inserted.
- After checking, connect the disconnected connectors again immediately unless otherwise specified.



CLUSTER



CN-7

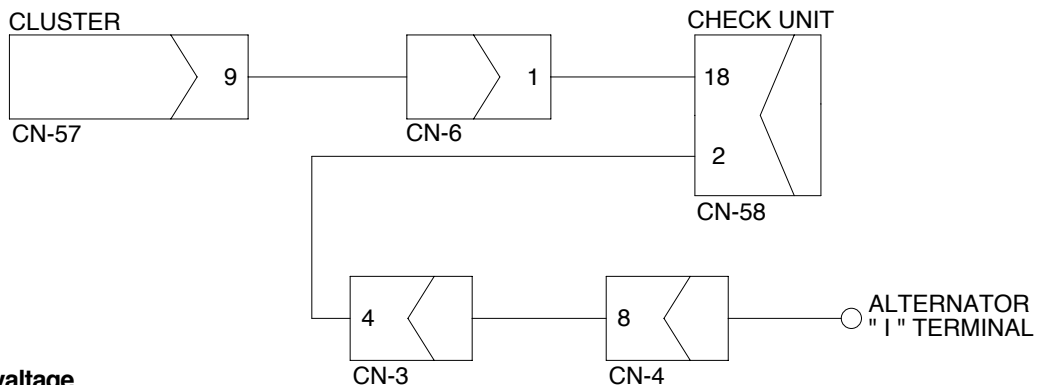
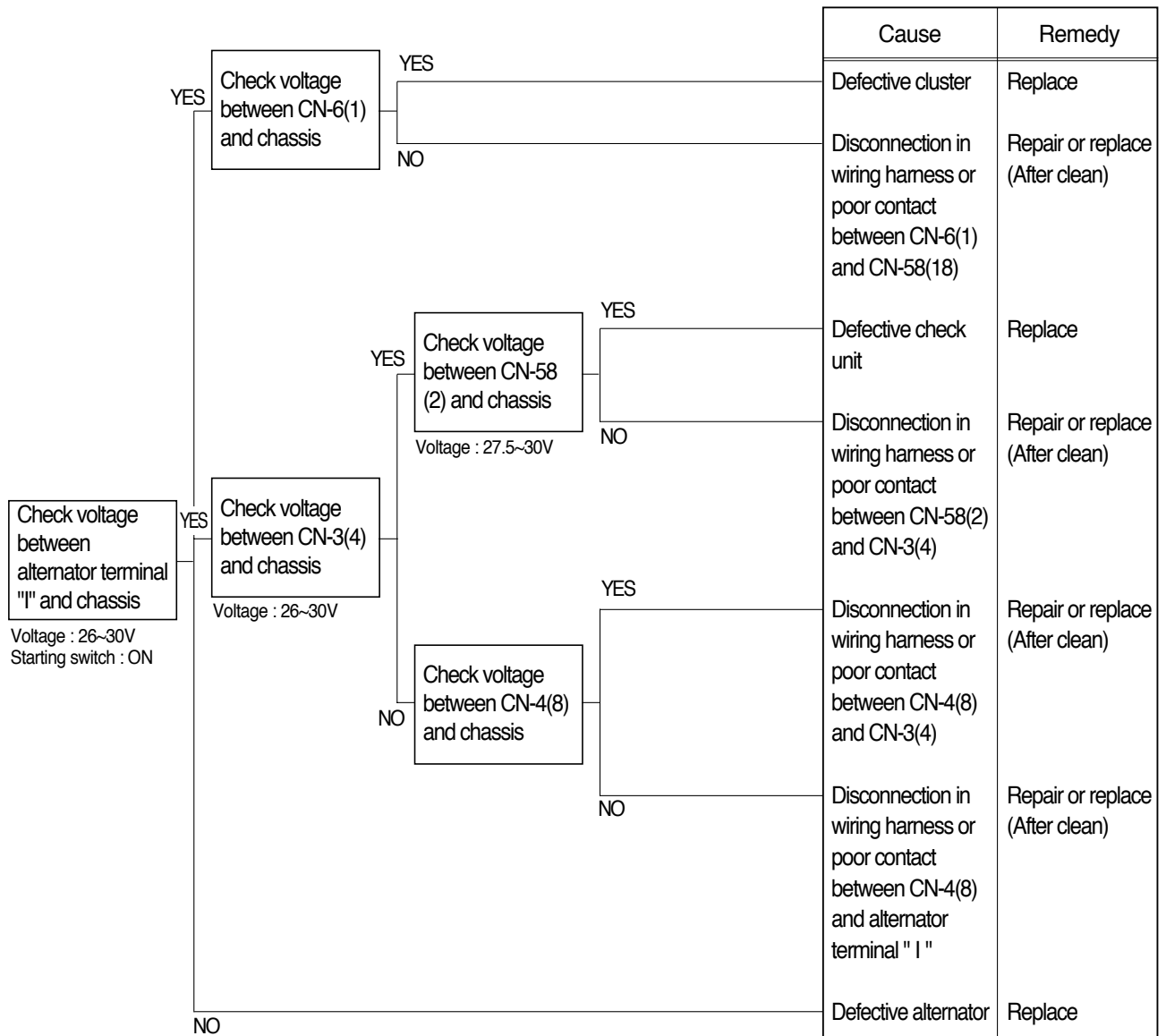


Check resistance

YES	MAX 1
NO	MIN 1M

10.  **WHEN BATTERY LAMP LIGHTS UP**(Engine is started)

- Before carrying out below procedure, check all the related connectors are properly inserted.
- After checking, connect the disconnected connectors again immediately unless otherwise specified.

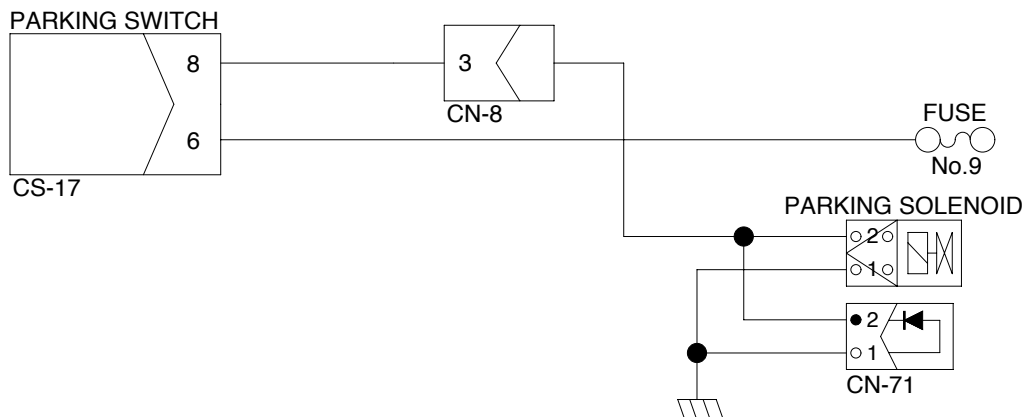
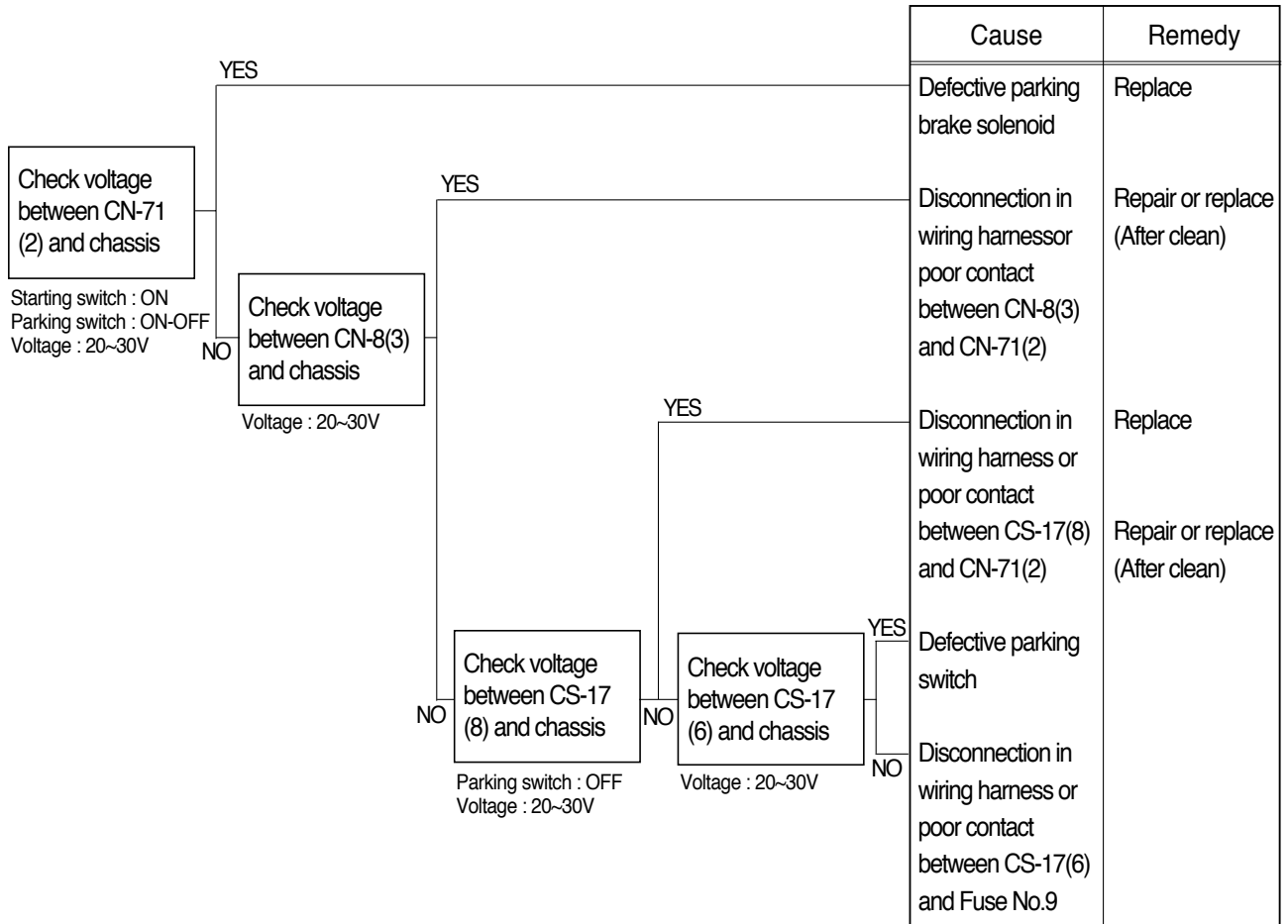


Check voltage

YES	20 ~ 30V
NO	0V

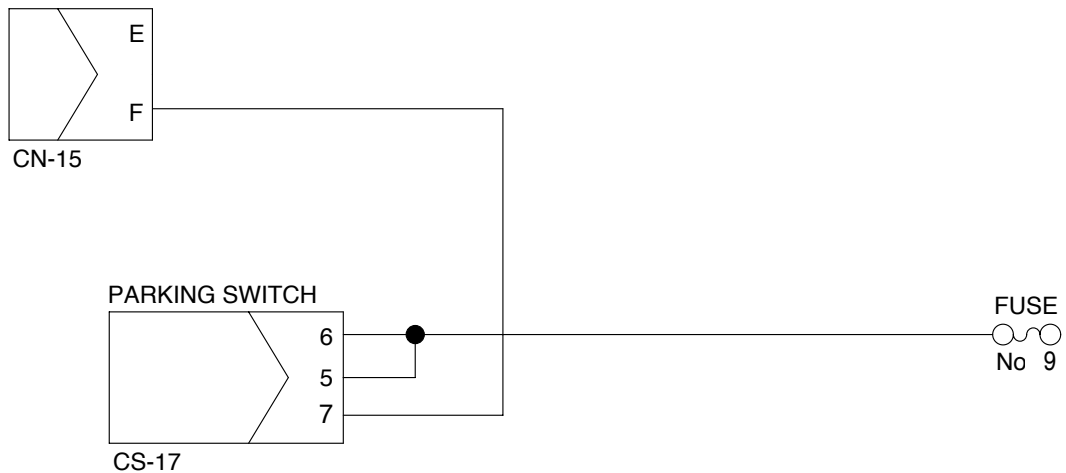
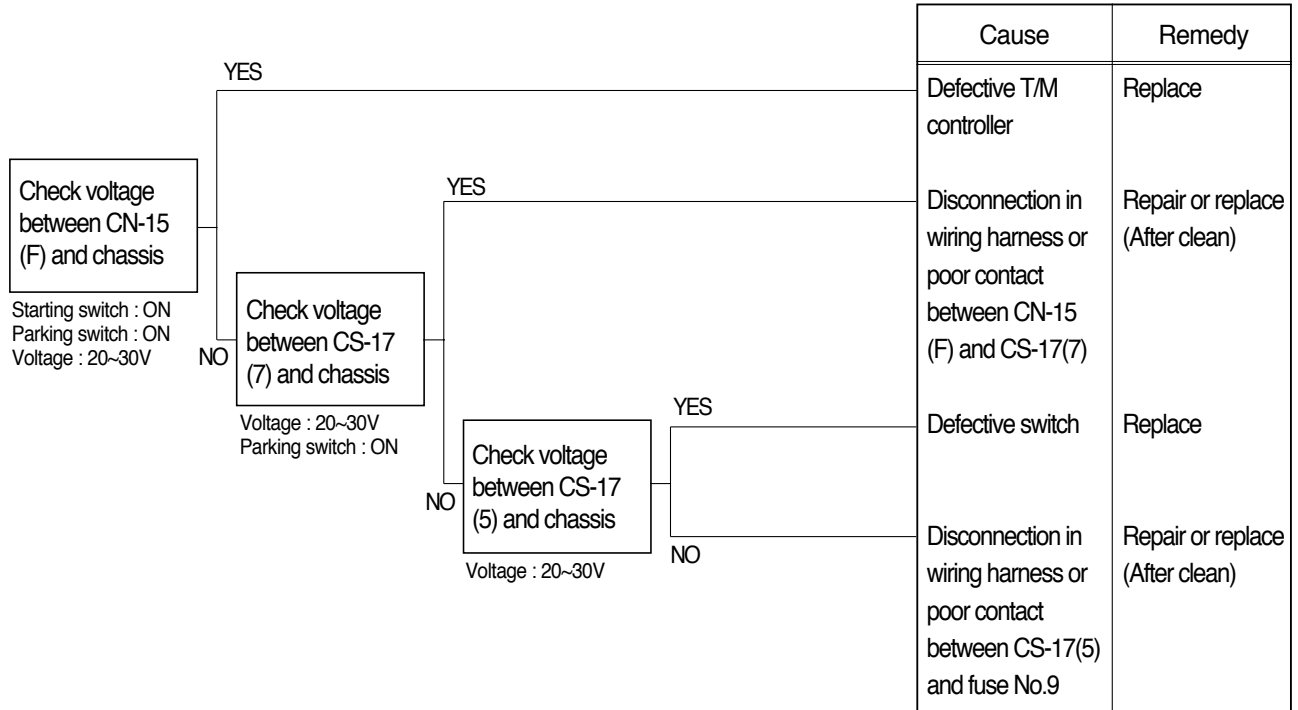
11. WHEN PARKING SOLENOID DOES NOT WORK

- Before carrying out below procedure, check all the related connectors are properly inserted and the fuse No.9 is not blown out.
- After checking, connect the disconnected connectors again immediately unless otherwise specified.



12. TRANSMISSION IS NOT RETURNED TO NEUTRAL WHEN PARKING BRAKE IS APPLIED

- Before carrying out below procedure, check all the related connectors are properly inserted and the fuse No.18(T/M controller) and No.9 are not blown out.
- After checking, connect the disconnected connectors again immediately unless otherwise specified.

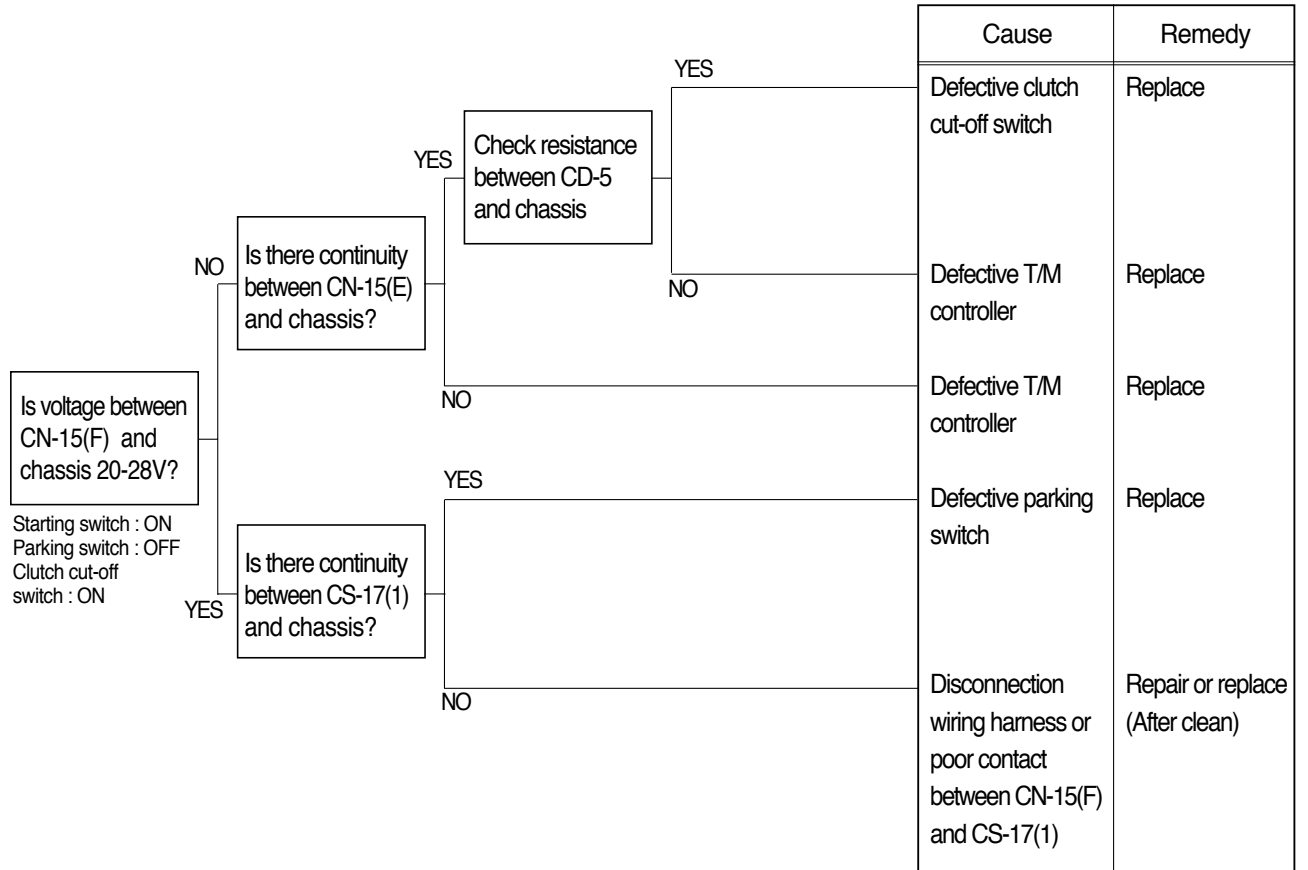


Check resistance

YES	MAX 1
NO	MIN 1M

13. MACHINE DOES NOT TRAVEL

- Before carrying out below procedure, check all the related connectors are properly inserted and the fuse No.18(Transmission controller) is not blown out.
- After checking, connect the disconnected connectors again immediately unless otherwise specified.
- Wiring diagram : **See page 7-17.**

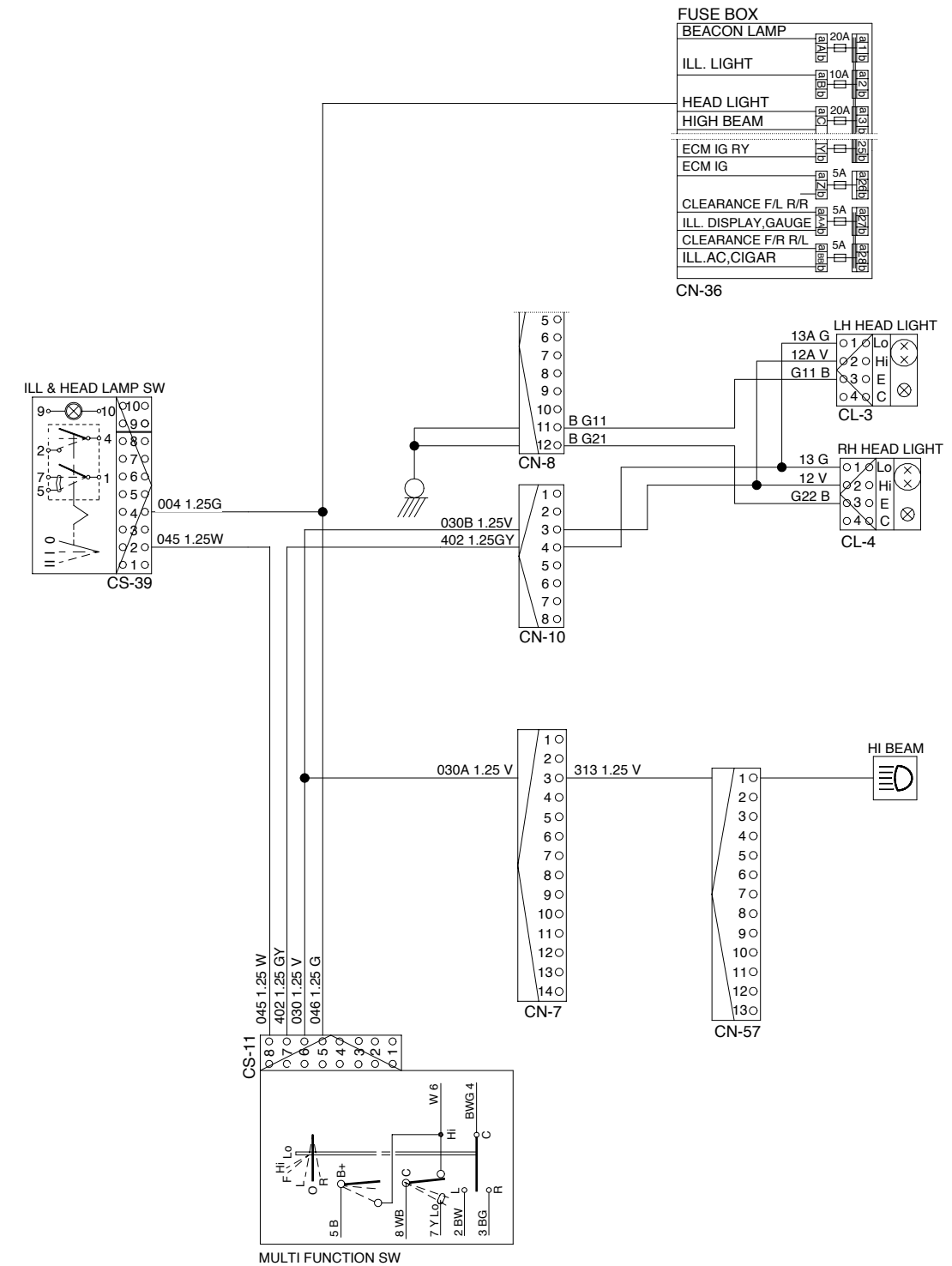
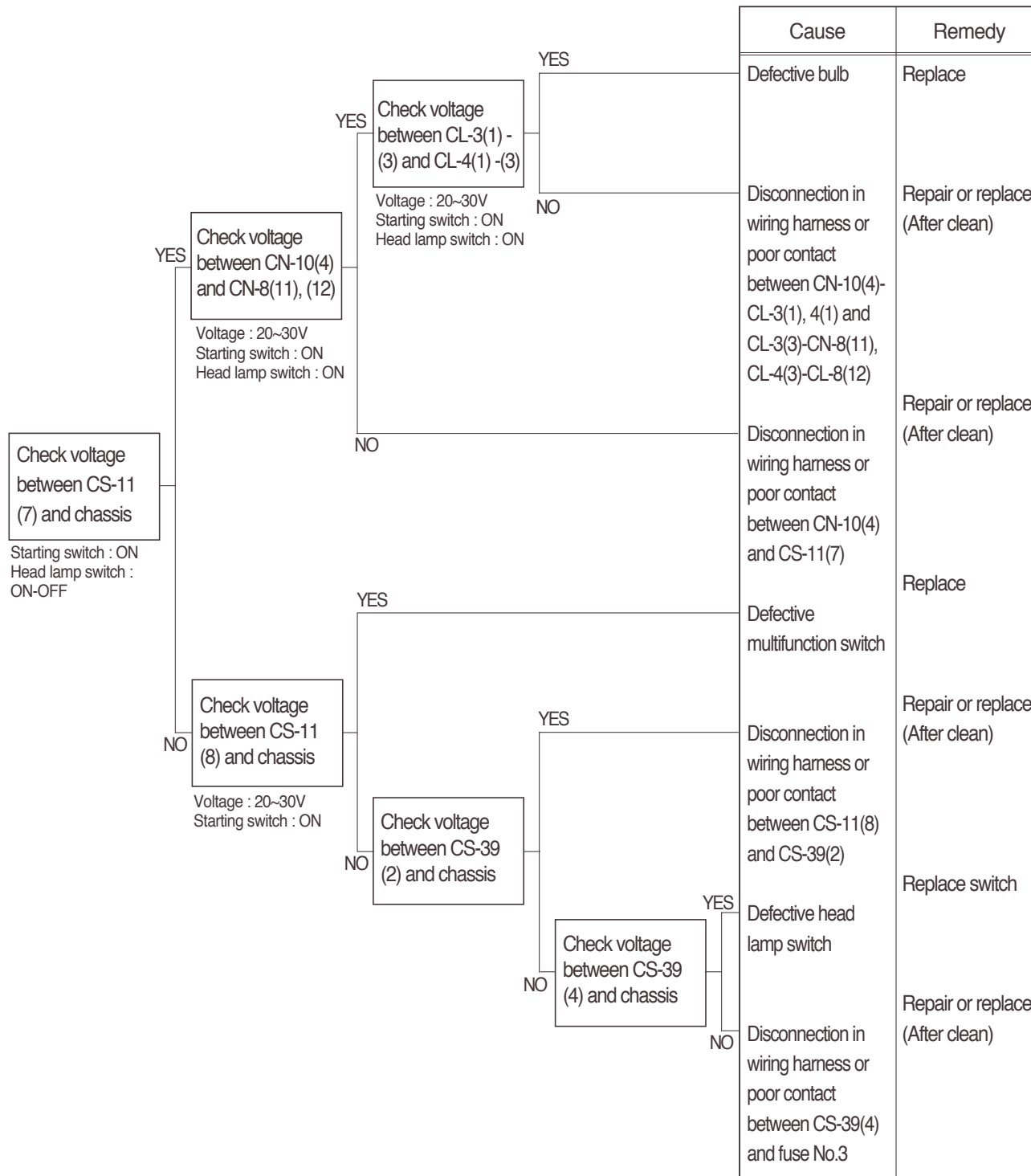


Check resistance

YES	MAX 1
NO	MIN 1M

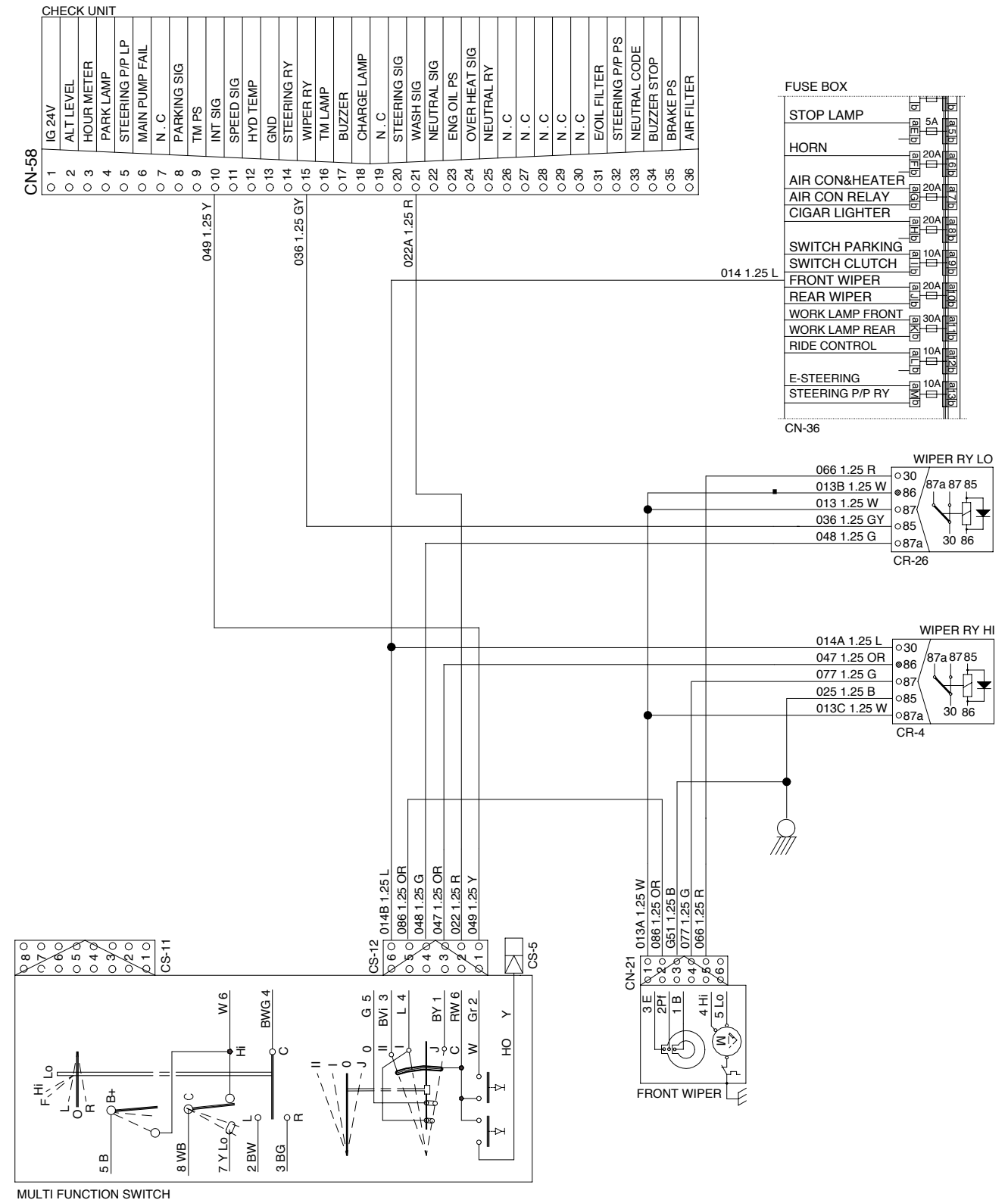
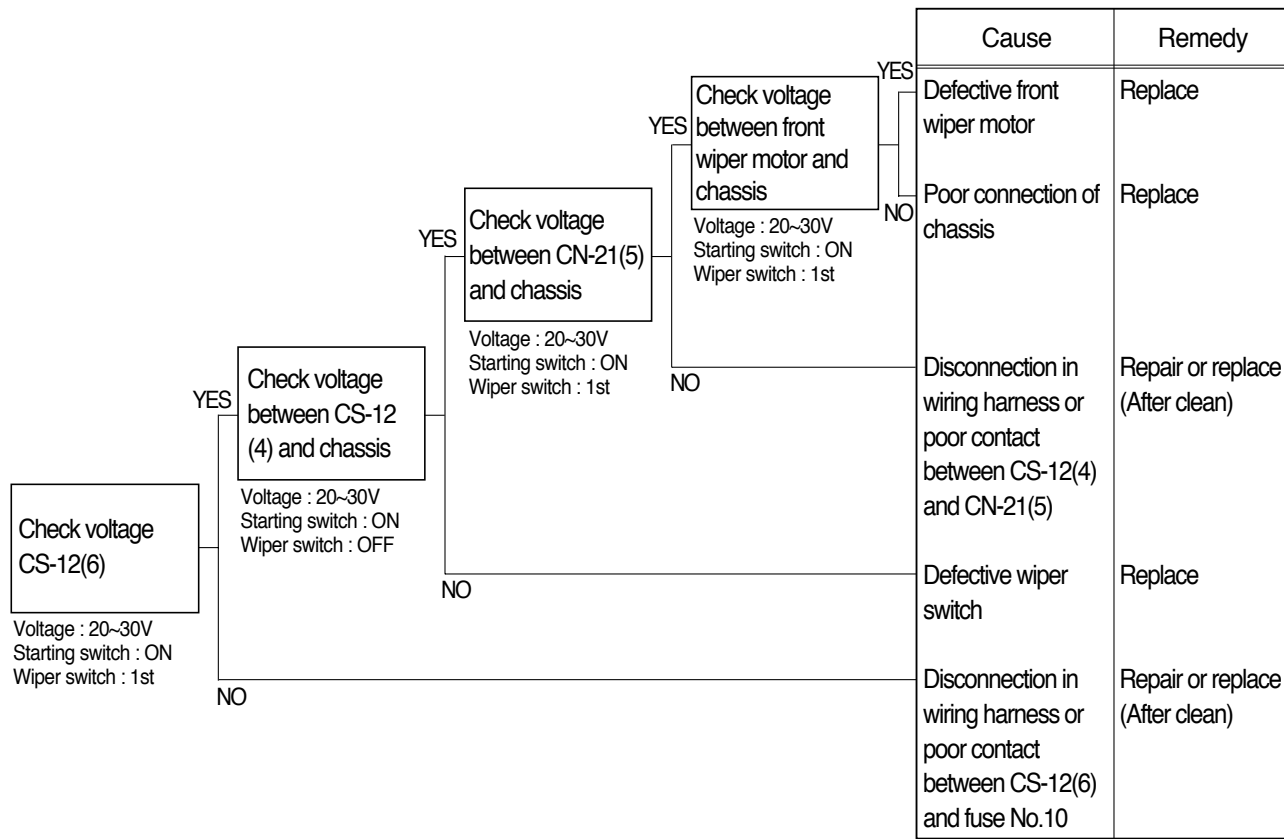
14. WHEN STARTING SWITCH IS TURNED ON, HEAD LAMP DOES NOT LIGHTS UP

- Before carrying out below procedure, check all the related connectors are properly inserted and the fuse No.3 is not blown out and ON/OFF of bulb.
- After checking, connect the disconnected connectors again immediately unless otherwise specified.



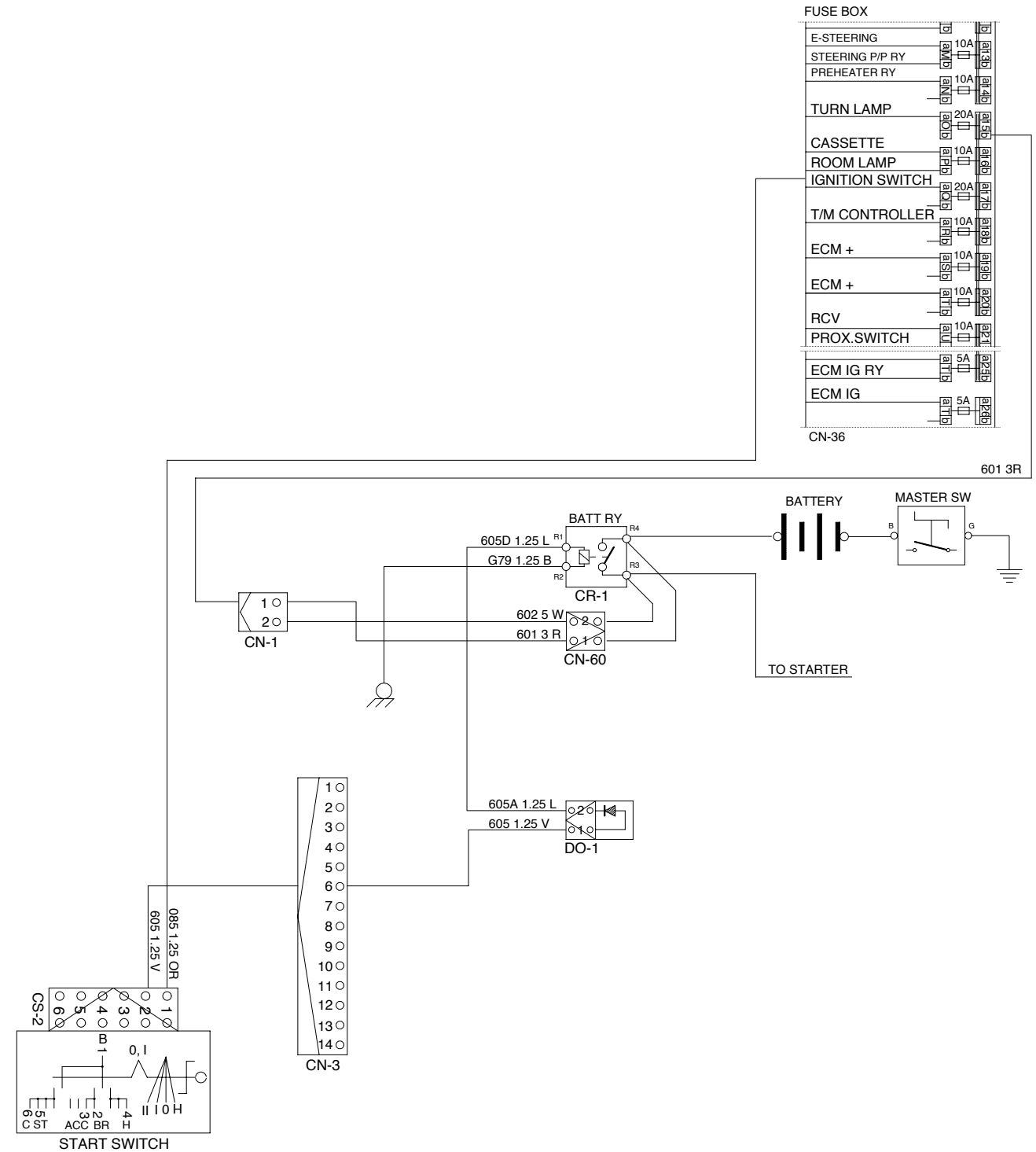
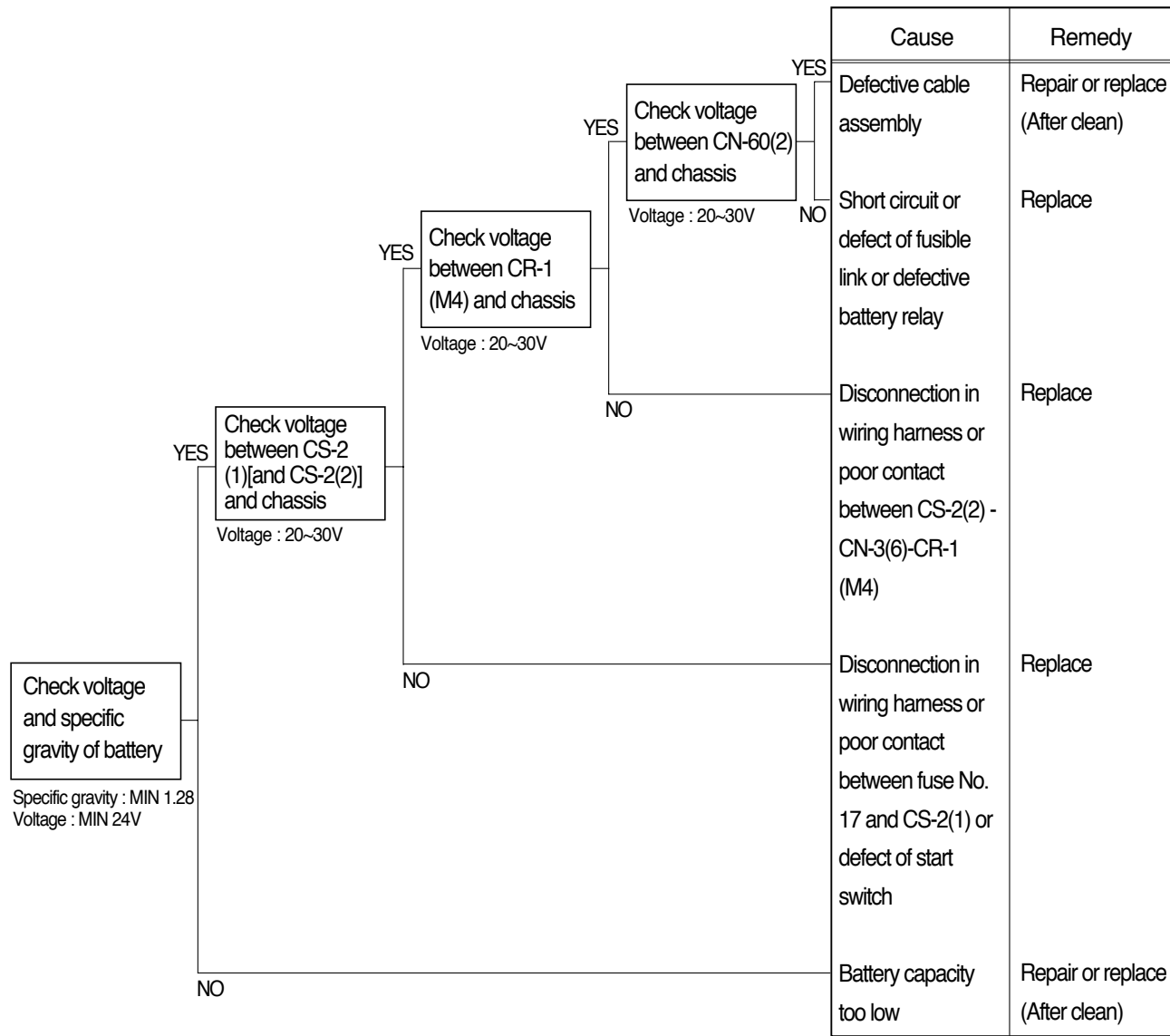
15. WHEN STARTING SWITCH IS TURNED ON, WIPER MOTOR DOES NOT OPERATE

- Before carrying out below procedure, check all the related connectors are properly inserted and the fuse No.10 is not blown out.
- After checking, connect the disconnected connectors again immediately unless otherwise specified.



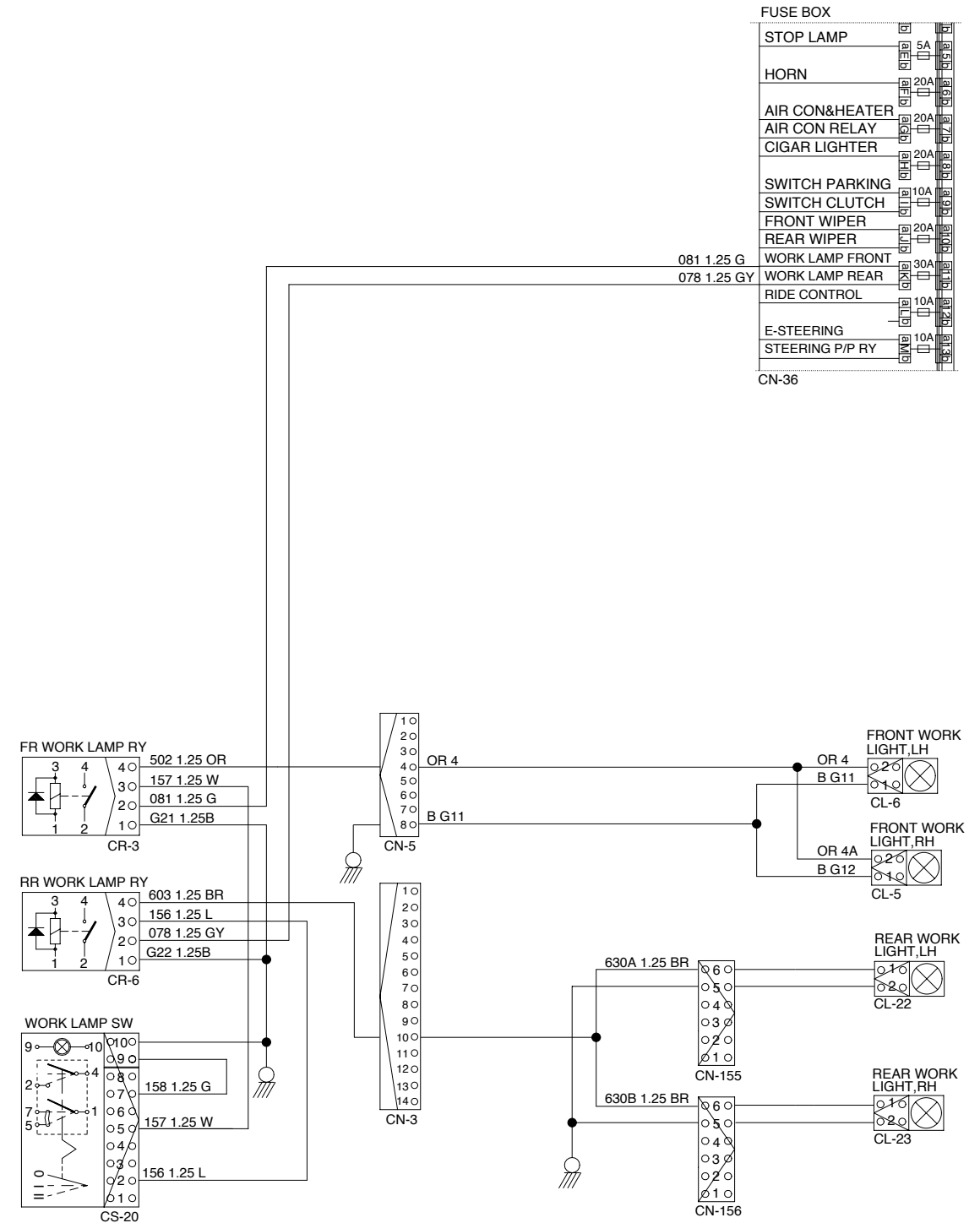
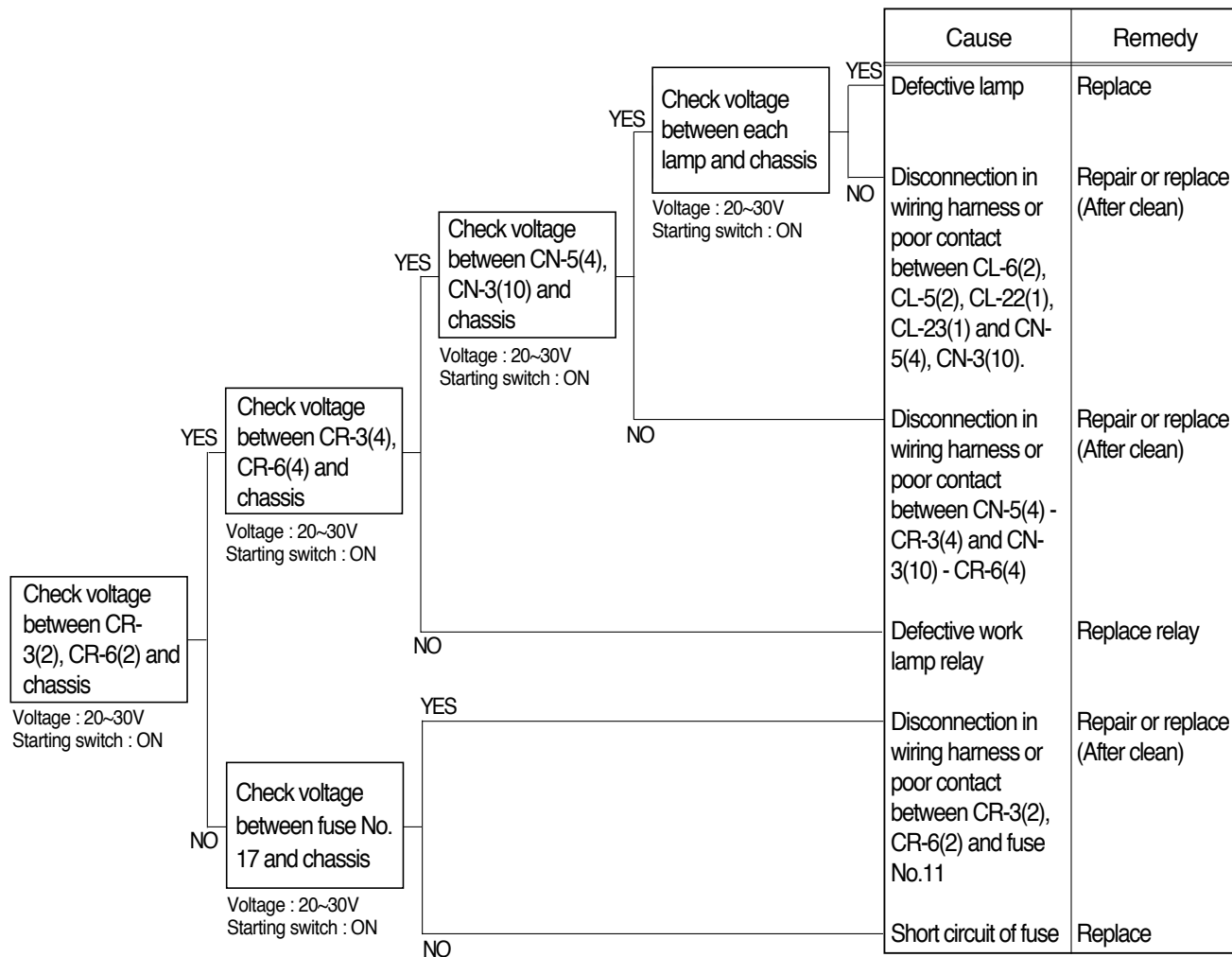
16. WHEN STARTING SWITCH "ON" DOES NOT OPERATE

- Before carrying out below procedure, check all the related connectors are properly inserted and and the fuse No.17 is not blown out.
- After checking, connect the disconnected connectors again immediately unless otherwise specified.



17. WHEN STARTING SWITCH IS TURNED ON, WORK LAMP DOES NOT LIGHTS UP

- Before carrying out below procedure, check all the related connectors are properly inserted, and the fuse No.11 is not blown out.
- After checking, connect the disconnected connectors again immediately unless otherwise specified.



FUSE BOX	
STOP LAMP	5A
HORN	20A
AIR CON&HEATER	20A
AIR CON RELAY	20A
CIGAR LIGHTER	20A
SWITCH PARKING	10A
SWITCH CLUTCH	10A
FRONT WIPER	20A
REAR WIPER	20A
WORK LAMP FRONT	30A
WORK LAMP REAR	30A
RIDE CONTROL	10A
E-STEERING	10A
STEERING P/P RY	10A

CN-36

18. WHEN ENGINE DOES NOT START

- Check supply of the power at engine stop solenoid while starting switch is ON.
- Before carrying out below procedure, check all the related connectors are properly inserted.
- After checking, connect the disconnected connectors again immediately unless other wise specified.
- Check forward reverse switch at neutral position.

