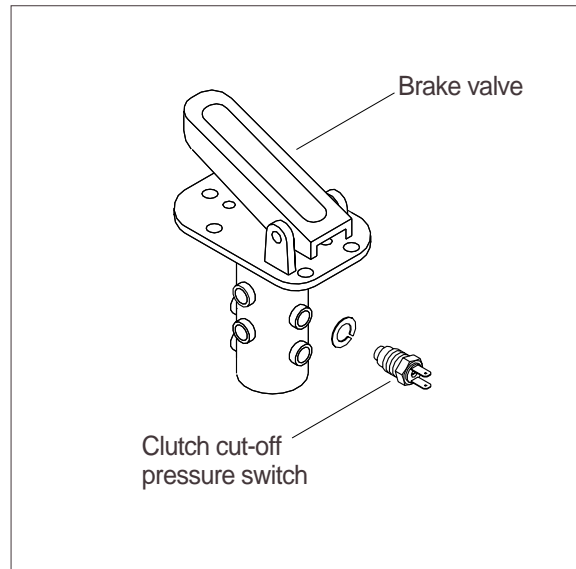


GROUP 3 TESTS AND ADJUSTMENTS

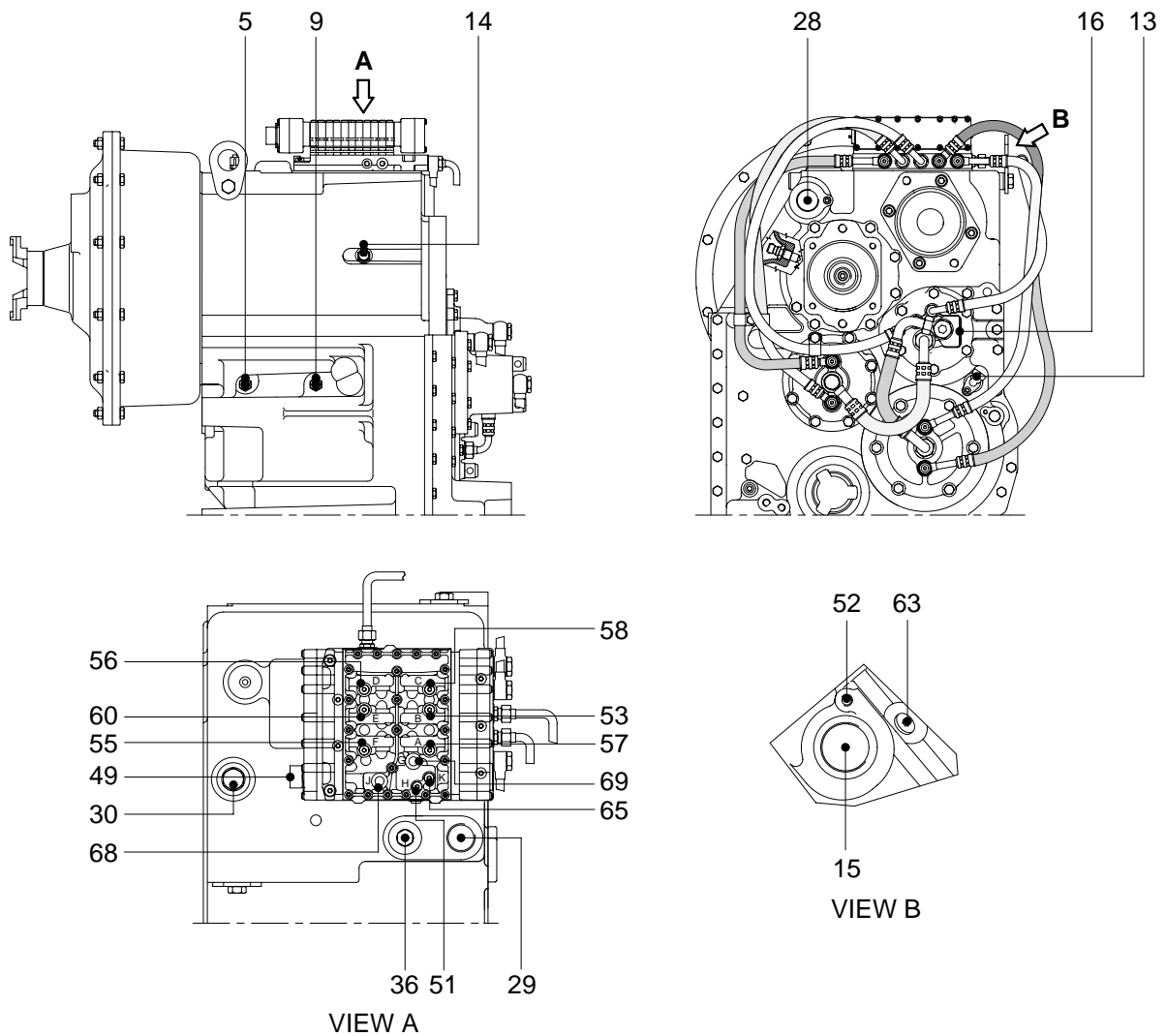
1. CLUTCH CUT-OFF PRESSURE SWITCH TEST

The setting pressure of the clutch cut-off pressure switch should be suited with the specification. The rated pressure is 25kgf/cm². For the detailed method for pressure adjusting, refer to page 4-21.



2. TRANSMISSION MEASURING POINTS AND CONNECTIONS

The measurements have to be carried out at hot transmission (About 80-95, C).



1) OIL PRESSURE AND TEMPERATURE

Port	Description		Size
51	In front of the converter-opening pressure(11bar)	H	M10 × 1.0
52	Behind the converter-opening pressure(5bar)		M14 × 1.5
53	Forward clutch(16+2bar)	KV B	M10 × 1.0
55	Reverse clutch(16+2bar)	KR E	M10 × 1.0
56	1st clutch(16+2bar)	K1 D	M10 × 1.0
57	2nd clutch(16+2bar)	K2 A	M10 × 1.0
58	3rd clutch(16+2bar)	K3 C	M10 × 1.0
60	4th clutch(16+2bar)	K4 F	M10 × 1.0
63	Behind the converter temperature 100,C, short-time 120,C		M14 × 1.5
65	System pressure(16+2bar)	K	M10 × 1.0

2) CONNECTIONS

Port	Description	Size
10	Breather	M10 × 1.0
15	Connection to the oil cooler	-
16	Connection from the oil cooler	-
28	Connection to the filter	M42 × 2.0
29	Connection from the filter	M42 × 2.0
30	Connection from the filter bypass	M42 × 2.0
36	Connection oil filler plug	M42 × 2.0
49	Plug connection on the electro-hydraulic control unit	-
68	System pressure(Optional) G	M16 × 1.5
69	Control system(Optional) J	M16 × 1.5

3) INDUCTIVE TRANSMITTER AND SPEED SENSOR

Port	Description	Size
5	Inductive transmitter n Turbine	M18 × 1.5
9	Inductive transmitter n Central gear train	M18 × 1.5
13	Speed sensor n Output and speedometer	-
14	Inductive transmitter n Engine	M18 × 1.5