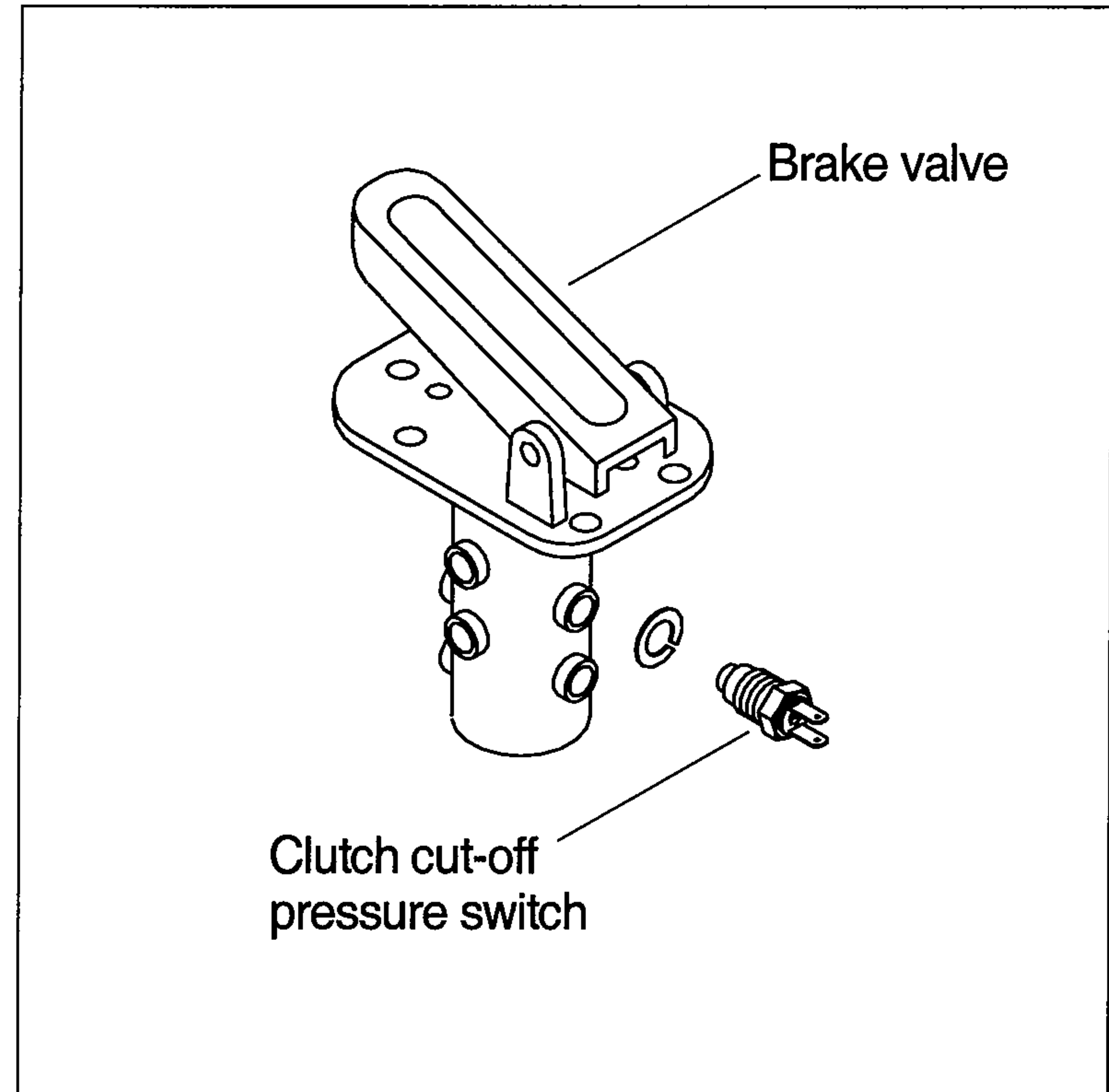


## GROUP 3 TESTS AND ADJUSTMENTS

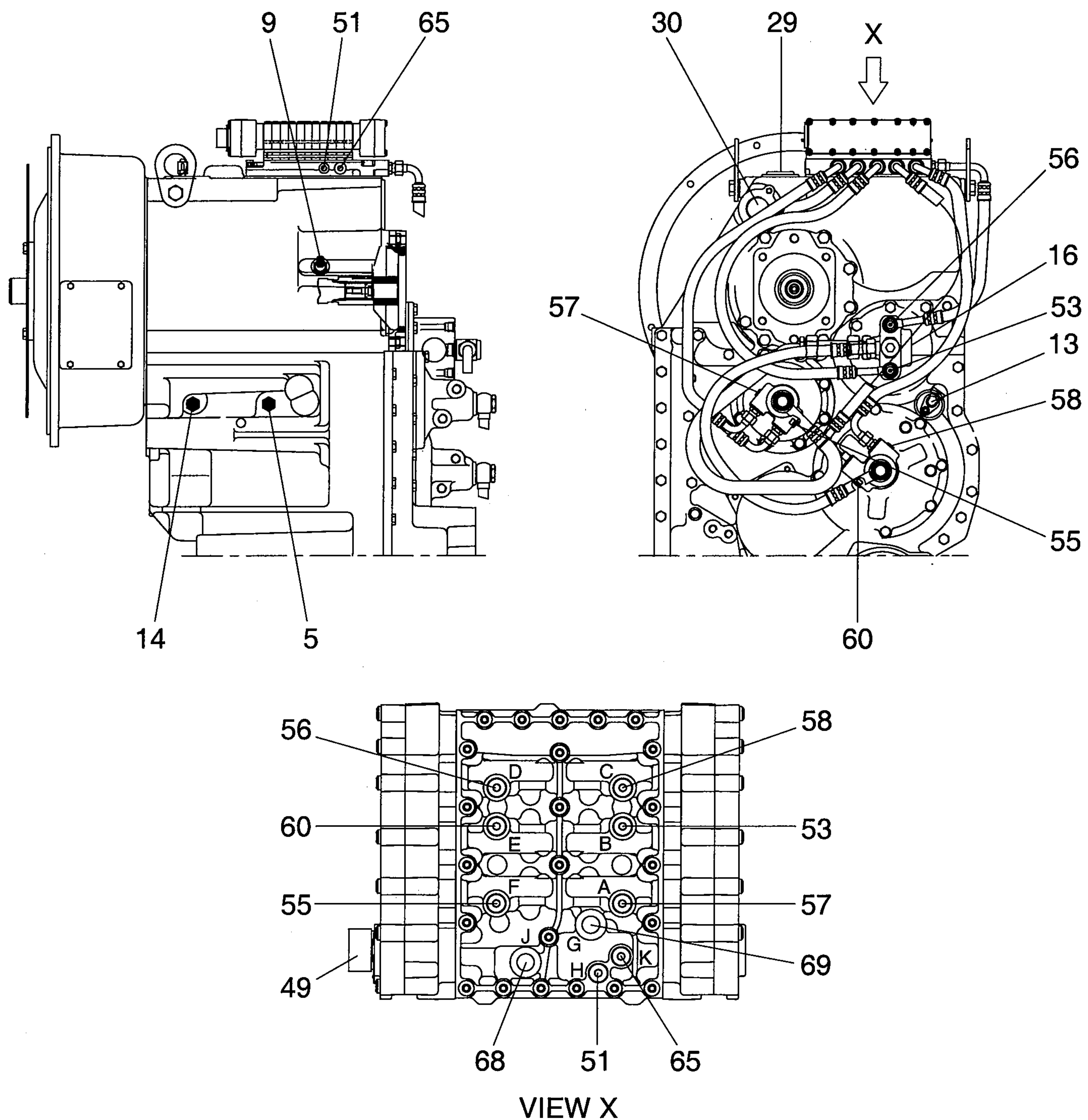
### 1. CLUTCH CUT-OFF PRESSURE SWITCH TEST

The setting pressure of the clutch cut-off pressure switch should be suited with the specification. The rated pressure is 25kgf/cm<sup>2</sup>. For the detailed method for pressure adjusting, refer to page 4-25.



## 2. TRANSMISSION MEASURING POINTS AND CONNECTIONS

The measurements have to be carried out at hot transmission (About 80-95° C).



### 1) OIL PRESSURE AND TEMPERATURE

Port	Description		Size
51	Converter inlet-opening pressure(8.5bar)	H	M10×1.0
52	Converter outlet-opening pressure(5bar)		M10×1.0
53	Forward clutch(16+2bar)	KV B	M10×1.0
55	Reverse clutch(16+2bar)	KR F	M10×1.0
56	1st clutch(16+2bar)	K1 D	M10×1.0
57	2nd clutch(16+2bar)	K2 A	M10×1.0
58	3rd clutch(16+2bar)	K3 C	M10×1.0
60	4th clutch(16+2bar)	K4 E	M10×1.0
63	Converter outlet temperature 100°C, short-time 120°C		M14×1.5
65	System pressure(16+2bar)	K	M10×1.0

## 2) CONNECTIONS

Port	Description	Size
15	Connection to the oil cooler	M42 × 2.0
16	Connection from the oil cooler	M42 × 2.0
29	Connection from filter	M42 × 2.0
30	Connection to filter	1-11/16 UN 2A ANSI
49	Plug connection on the hydraulic control unit	-
68	Pilot pressure(Optional) J	M16 × 1.5
69	System pressure(Optional) G	M16 × 1.5

## 3) INDUCTIVE TRANSMITTER AND SPEED SENSOR

Port	Description	Size
5	Inductive transmitter n Central gear chain	M18 × 1.5
9	Inductive transmitter n Engine	M18 × 1.5
13	Speed sensor n Output and speedometer	-
14	Inductive transmitter n Turbine	M18 × 1.5