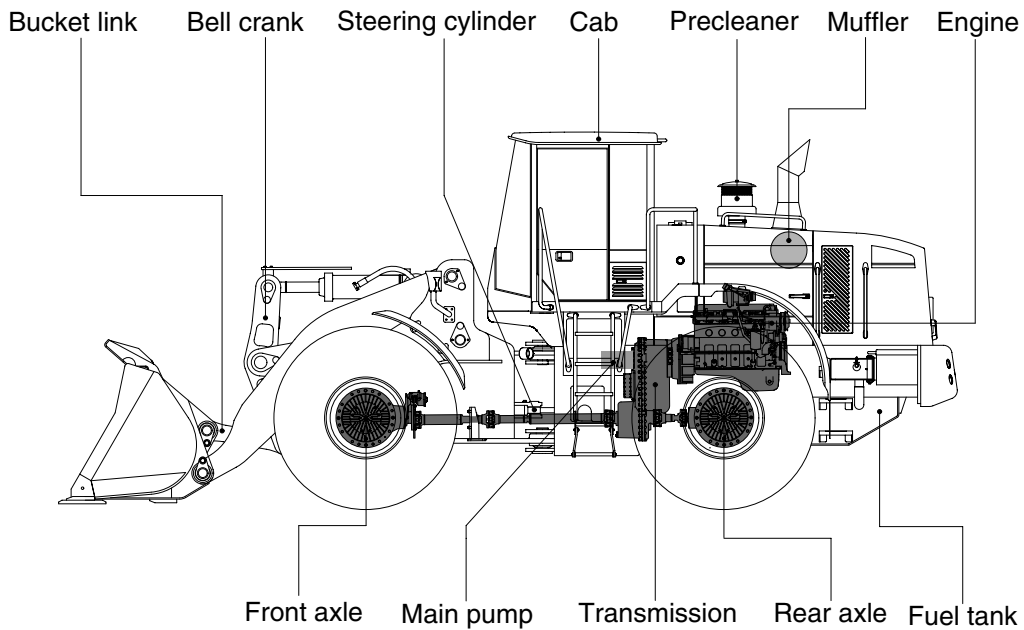
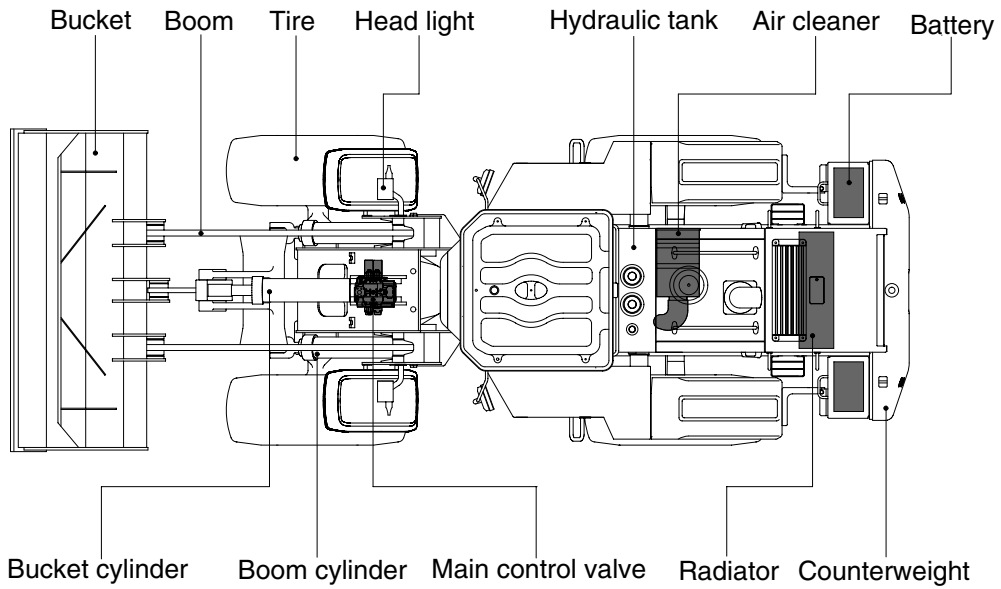


GROUP 2 SPECIFICATION

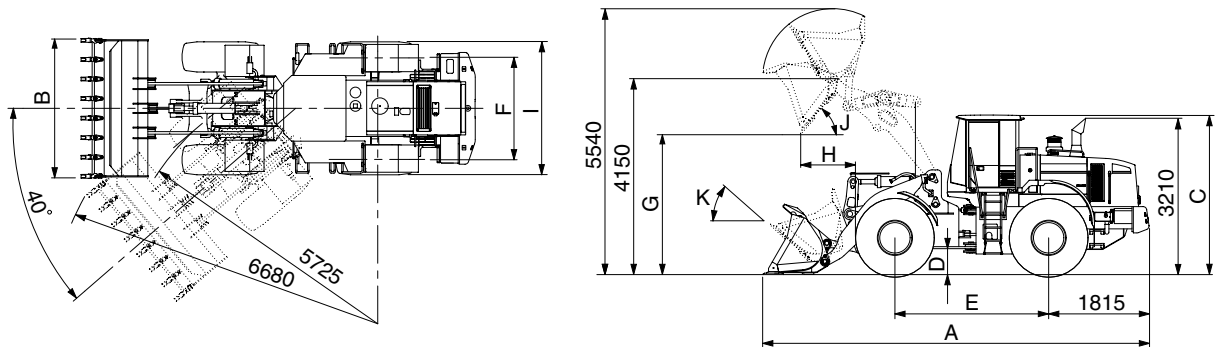
1. MAJOR COMPONENT



7607A2SE01

2. SPECIFICATIONS

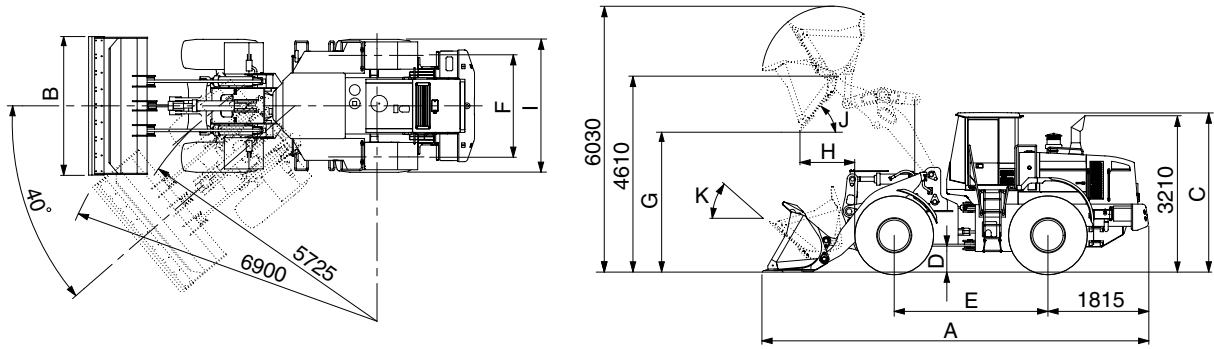
1) WITH BOLT-ON CUTTING EDGE TYPE BUCKET(HL760-7A)



7607A2SE02

| Description | | Unit | Specification | |
|--|-----------------|-----------------------------------|---------------|----|
| Operating weight | | kg(lb) | 17900(39460) | |
| Bucket capacity | Struck | m ³ (yd ³) | 2.7(3.5) | |
| | Heaped | | 3.1(4.1) | |
| Overall length | A | mm(ft-in) | 8060(26' 5") | |
| Overall width | B | | 2900(9' 6") | |
| Overall height | C | | 3440(11' 3") | |
| Ground clearance | D | | 420(1' 5") | |
| Wheelbase | E | | 3300(10'10") | |
| Tread | F | | 2160(7' 1") | |
| Dump clearance at 45° | G | | 3000(9'10") | |
| Dump reach(Full lift) | H | | 1190(3'11") | |
| Width over tires | I | | 2770(9' 1") | |
| Dump angle | J | | Degree (°) | 47 |
| Roll back angle(Carry position) | K | | | 47 |
| Cycle time | Lift(With load) | sec | 6.2 | |
| | Dump(With load) | | 1.3 | |
| | Lower(Empty) | | 3.0 | |
| Maximum travel speed | | km/hr(mph) | 34.3(21.3) | |
| Braking distance | | m(ft-in) | 11(36' 1") | |
| Minimum turning radius(Center of outside tire) | | | 5.73(18' 9") | |
| Gradability | | Degree (°) | 30 | |
| Travel speed | Forward | First gear | 6.2(3.9) | |
| | | Second gear | 11.7(7.3) | |
| | | Third gear | 22.3(13.9) | |
| | | Fourth gear | 34.3(21.3) | |
| | Reverse | First gear | 6.6(4.1) | |
| | | Second gear | 12.3(7.6) | |
| Third gear | | 23.3(14.5) | | |

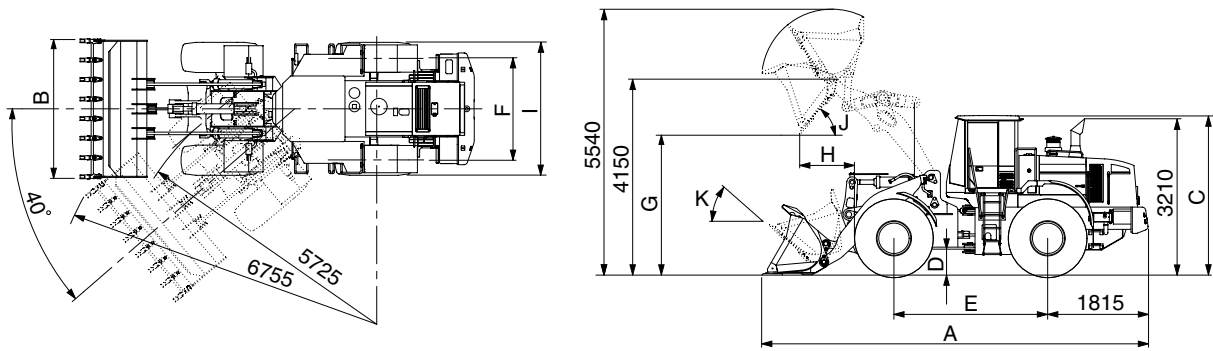
WITH BOLT-ON CUTTING EDGE TYPE BUCKET(HL760XTD-7A)



7607A2SE03

| Description | | Unit | Specification | |
|--|-----------------|-----------------------------------|---------------|----|
| Operating weight | | kg(lb) | 18700(41230) | |
| Bucket capacity | Struck | m ³ (yd ³) | 2.7(3.5) | |
| | Heaped | | 3.1(4.1) | |
| Overall length | A | mm(ft-in) | 8620(28' 3") | |
| Overall width | B | | 2900(9' 6") | |
| Overall height | C | | 3440(11' 3") | |
| Ground clearance | D | | 420(1' 5") | |
| Wheelbase | E | | 3300(10'10") | |
| Tread | F | | 2160(7' 1") | |
| Dump clearance at 45° | G | | 3490(11' 5") | |
| Dump reach(Full lift) | H | | 1215(4' 0") | |
| Width over tires | I | | 2770(9' 1") | |
| Dump angle | J | | Degree (°) | 47 |
| Roll back angle(Carry position) | K | | | 49 |
| Cycle time | Lift(With load) | sec | 6.2 | |
| | Dump(With load) | | 1.3 | |
| | Lower(Empty) | | 3.0 | |
| Maximum travel speed | | km/hr(mph) | 34.3(21.3) | |
| Braking distance | | m(ft-in) | 11(36' 1") | |
| Minimum turning radius(Center of outside tire) | | | 5.73(18' 9") | |
| Gradability | | Degree (°) | 30 | |
| Travel speed | Forward | km/hr(mph) | First gear | |
| | | | Second gear | |
| | | | Third gear | |
| | | | Fourth gear | |
| | Reverse | | First gear | |
| | | | Second gear | |
| Third gear | | | | |

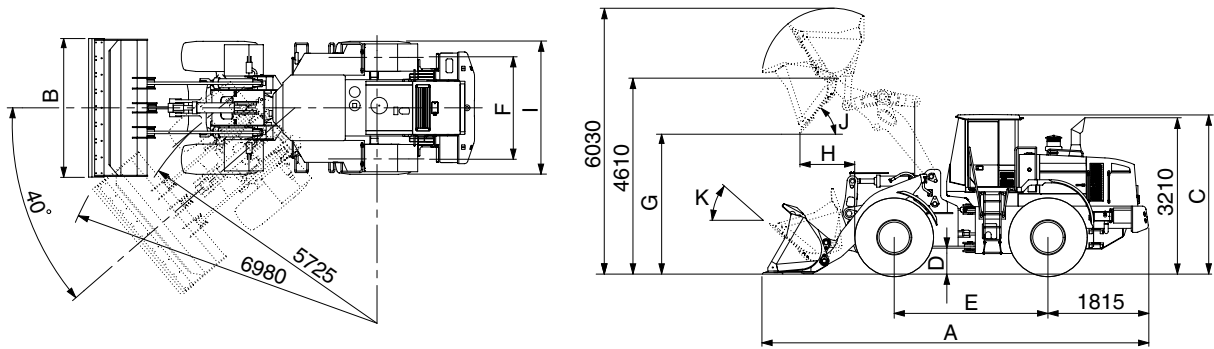
2) WITH TOOTH TYPE BUCKET(HL760-7A)



7607A2SE04

| Description | | Unit | Specification | |
|--|-----------------|-----------------------------------|---------------|-----|
| Operating weight | | kg(lb) | 17900(39460) | |
| Bucket capacity | Struck | m ³ (yd ³) | 2.6(3.4) | |
| | Heaped | | 3.0(3.9) | |
| Overall length | A | mm(ft-in) | 8180(26'10") | |
| Overall width | B | | 2950(9' 8") | |
| Overall height | C | | 3440(11' 3") | |
| Ground clearance | D | | 420(1' 5") | |
| Wheelbase | E | | 3300(10'10") | |
| Tread | F | | 2160(7' 1") | |
| Dump clearance at 45° | G | | 2870(9' 5") | |
| Dump reach(Full lift) | H | | 1270(4' 2") | |
| Width over tires | I | | 2770(9' 1") | |
| Dump angle | J | | Degree (°) | 47 |
| Roll back angle(Carry position) | K | | | 47 |
| Cycle time | Lift(With load) | | sec | 6.2 |
| | Dump(With load) | 1.3 | | |
| | Lower(Empty) | 3.0 | | |
| Maximum travel speed | | km/hr(mph) | 34.3(21.3) | |
| Braking distance | | m(ft-in) | 11(36' 1") | |
| Minimum turning radius(Center of outside tire) | | | 5.73(18' 9") | |
| Gradability | | Degree (°) | 30 | |
| Travel speed | Forward | First gear | 6.2(3.9) | |
| | | Second gear | 11.7(7.3) | |
| | | Third gear | 22.3(13.9) | |
| | | Fourth gear | 34.3(21.3) | |
| | Reverse | First gear | 6.6(4.1) | |
| | | Second gear | 12.3(7.6) | |
| Third gear | | 23.3(14.5) | | |

WITH TOOTH TYPE BUCKET(HL760XTD-7A)



7607A2SE05

| Description | | Unit | Specification | |
|--|-----------------|-----------------------------------|---------------|-----|
| Operating weight | | kg(lb) | 18700(41230) | |
| Bucket capacity | Struck | m ³ (yd ³) | 2.6(3.4) | |
| | Heaped | | 3.0(3.9) | |
| Overall length | A | mm(ft-in) | 8770(28' 9") | |
| Overall width | B | | 2950(9' 8") | |
| Overall height | C | | 3440(11' 3") | |
| Ground clearance | D | | 420(1' 5") | |
| Wheelbase | E | | 3300(10'10") | |
| Tread | F | | 2160(7' 1") | |
| Dump clearance at 45° | G | | 3360(11' 0") | |
| Dump reach(Full lift) | H | | 1305(4' 3") | |
| Width over tires | I | | 2770(9' 1") | |
| Dump angle | J | | Degree (°) | 47 |
| Roll back angle(Carry position) | K | | | 49 |
| Cycle time | Lift(With load) | | sec | 6.2 |
| | Dump(With load) | 1.3 | | |
| | Lower(Empty) | 3.0 | | |
| Maximum travel speed | | km/hr(mph) | 34.3(21.3) | |
| Braking distance | | m(ft-in) | 11(36' 1") | |
| Minimum turning radius(Center of outside tire) | | | 5.73(18' 9") | |
| Gradability | | Degree (°) | 30 | |
| Travel speed | Forward | First gear | 6.2(3.9) | |
| | | Second gear | 11.7(7.3) | |
| | | Third gear | 22.3(13.9) | |
| | | Fourth gear | 34.3(21.3) | |
| | Reverse | First gear | 6.6(4.1) | |
| | | Second gear | 12.3(7.6) | |
| Third gear | | 23.3(14.5) | | |

3. WEIGHT

| Item | | kg | lb |
|--|----------------|------|------|
| Front frame assembly | | 1652 | 3642 |
| Rear frame assembly | | 1998 | 4405 |
| Front fender(LH & RH) | | 28 | 62 |
| Counterweight | HL760-7A | 1050 | 2315 |
| | HL760XTD-7A | 1630 | 3594 |
| Cab assembly | | 1020 | 2250 |
| Engine assembly | | 485 | 1069 |
| Transmission assembly | | 470 | 1036 |
| Drive shaft(Front) | | 44 | 97 |
| Drive shaft(Center) | | 46 | 101 |
| Drive shaft(Rear) | | 27 | 60 |
| Front axle(Include differential) | -#0293 (VOLVO) | 970 | 2139 |
| | #0294- (ZF) | 630 | 1389 |
| Rear axle(Include differential) | -#0293 (VOLVO) | 840 | 1852 |
| | #0294- (ZF) | 632 | 1393 |
| Tire(23.5-25, 20PR, L3) | | 300 | 661 |
| Hydraulic tank assembly | | 210 | 463 |
| Fuel tank assembly | | 372 | 820 |
| Main pump assembly | | 37 | 82 |
| Fan & brake pump assembly | | 7 | 15 |
| Main control valve | | 51 | 112 |
| Steering valve(EHPS) | | 15 | 33 |
| Boom assembly | HL760-7A | 1200 | 2646 |
| | HL760XTD-7A | 1360 | 3000 |
| Bell crank assembly | | 360 | 794 |
| Bucket link | | 57 | 126 |
| 3.1m ³ bucket, with bolt on cutting edge | | 1675 | 3693 |
| 3.0m ³ bucket, with tooth | | 1625 | 3583 |
| 3.0m ³ bucket, without tooth and cutting edge | | 1415 | 3120 |
| Boom cylinder assembly | | 158 | 348 |
| Bucket cylinder assembly | | 184 | 406 |
| Steering cylinder assembly | | 29 | 64 |
| Seat | | 40 | 88 |
| Battery | | 55 | 121 |

4. SPECIFICATION FOR MAJOR COMPONENTS

1) ENGINE

| Item | Specification |
|-------------------------------------|---|
| Model | Cummins QSB6.7 |
| Type | 4-cycle turbocharged, charge air cooled diesel engine |
| Control type | Electronic control |
| Cooling method | Water cooling |
| Number of cylinders and arrangement | 6 cylinders, in-line |
| Firing order | 1-5-3-6-2-4 |
| Combustion chamber type | Direct injection type |
| Cylinder bore × stroke | 104 × 132mm(4.10" × 5.20") |
| Piston displacement | 6700cc(409cu in) |
| Compression ratio | 17.2 : 1 |
| Rated gross horse power | 218ps at 2100rpm |
| Maximum gross torque at 1500rpm | 97kgf · m(702lb · ft) |
| Engine oil quantity | 18 l (4.8 U.S. gal) |
| Wet weight | 485kg(1062lb) |
| High idling speed | 2230 ± 50rpm |
| Low idling speed | 800 ± 50rpm |
| Rated fuel consumption | 170g/ps · hr |
| Starting motor | Nippondenso 228000-7902 (24V-3.7kW) |
| Alternator | Delco Remy 22SI(24V-70Amp) |
| Battery | 2 × 12V × 160Ah |

2) MAIN PUMP

| Item | Specification | |
|----------------------------|-------------------------------------|-------------------------|
| | Steering | Loader |
| Type | Fixed displacement tandem gear pump | |
| Capacity | 68cc/rev | 68cc/rev |
| Maximum operating pressure | 210kgf/cm ² (2990psi) | |
| Rated oil quantity | 140 l /min(37.0U.S.gpm) | 140 l /min(37.0U.S.gpm) |
| Rated speed | 2100rpm | |

3) FAN + BRAKE PUMP

| Item | Specification | |
|----------------------------|-------------------------------------|-----------------------|
| | Fan | Brake |
| Type | Fixed displacement tandem gear pump | |
| Capacity | 19.0cc/rev | 11.9cc/rev |
| Maximum operating pressure | 180kgf/cm ² (2560psi) | |
| Rated oil quantity | 43 l /min(11.4U.S.gpm) | 27 l /min(7.1U.S.gpm) |
| Rated speed | 2100rpm | |

4) MAIN CONTROL VALVE

| Item | Specification |
|--------------------------------------|----------------------------------|
| Type | 2 spool |
| Operating method | Hydraulic pilot assist |
| Main relief valve pressure | 210kgf/cm ² (2990psi) |
| Overload relief valve pressure(Boom) | 240kgf/cm ² (3410psi) |

5) REMOTE CONTROL VALVE

| Item | Specification | |
|-------------------------|------------------------|----------------------------------|
| Type | Pressure reducing type | |
| Operating | Minimum | 5.8kgf/cm ² (82.5psi) |
| | Maximum | 19kgf/cm ² (270psi) |
| Single operation stroke | Lever | 70mm(2.8in) |

6) CYLINDER

| Item | | Specification |
|-------------------|-----------------------------|----------------------|
| Boom cylinder | Bore dia × Rod dia × Stroke | ∅ 160 × ∅ 90 × 757mm |
| Bucket cylinder | Bore dia × Rod dia × Stroke | ∅ 180 × ∅ 90 × 530mm |
| Steering cylinder | Bore dia × Rod dia × Stroke | ∅ 80 × ∅ 45 × 440mm |

7) DYNAMIC POWER TRANSMISSION DEVICES

| Item | | Specification | |
|--------------|----------------|---|----------------------------|
| Transmission | Model | ZF 4WG210 | |
| | Type | Converter | Single-stage, single-phase |
| | | Transmission | Full-automatic power shift |
| | Gear shift | Forward fourth gear, reverse third gear | |
| | Adjustment | Electrical single lever type, kick-down system | |
| Axle | Drive devices | 4-wheel drive | |
| | Front | Front fixed location | |
| | Rear | Oscillation $\pm 12^\circ$ of center pin-loaded | |
| Wheels | Tires | 23.5-25, 20PR(L3) | |
| Brakes | Travel | Four-wheel, wet-disc type, full hydraulic | |
| | Parking | Spring applied, hydraulic released brake | |
| Steering | Type | Full hydraulic, articulated | |
| | Steering angle | 40° to both right and left angle, respectively | |

5. TIGHTENING TORQUE OF MAJOR COMPONENT

| No. | Items | Size | kgf · m | lbf · ft | | |
|-----|----------------------------------|--|---------------|------------|------------|----------|
| 1 | Engine | Engine mounting bolt, nut(Rubber, 2EA) | M20×2.5 | 57.9 ± 8.7 | 419± 62.9 | |
| 2 | | Engine mounling bolt(Bracket, 8EA) | M12×1.75 | 10.7 ± 1.6 | 77.4± 11.6 | |
| 3 | | Engine mounting bolt(Fly wheel housing,12EA) | M10×1.5 | 4.6 ± 0.9 | 33.3± 6.5 | |
| 4 | | Radiator mounting bolt | M16×2.0 | 29.7± 4.5 | 215± 32.5 | |
| 5 | | Fuel tank mounting bolt, nut | M16×2.0 | 29.7 ± 4.5 | 215± 32.5 | |
| 6 | Hydraulic system | Main pump housing mounting bolt | M12×1.75 | 12.8 ± 3.0 | 92.6± 21.7 | |
| 7 | | Brake pump housing mounting bolt | M10×1.5 | 6.9 ± 1.4 | 49.9± 10.1 | |
| 8 | | Main control valve mounting bolt | M12×1.75 | 12.8 ± 3.0 | 92.6± 21.7 | |
| 9 | | Steering unit mounting bolt | M10×1.5 | 6.9 ± 1.4 | 49.9± 10.1 | |
| 10 | | Steering valve(EHPS) mounting bolt | M8×1.25 | 2.5 ± 0.5 | 18.1± 3.6 | |
| 11 | | Brake valve mounting bolt | M8×1.25 | 2.5 ± 0.5 | 18.1± 3.6 | |
| 12 | | Cut-off valve mounting bolt | M12×1.75 | 12.8 ± 3.0 | 92.6± 21.7 | |
| 13 | | Remote control lever mounting bolt | M6×1.0 | 1.1± 0.2 | 8.0± 1.4 | |
| 14 | | Pilot supply unit mounting bolt | M8×1.25 | 2.5 ± 0.5 | 18.1± 3.6 | |
| 15 | | Safety valve | M8×1.25 | 2.5 ± 0.5 | 8.1± 3.6 | |
| 16 | Hydraulic oil tank mounting bolt | M16×2.0 | 29.7 ± 4.5 | 215 ± 32.5 | | |
| 17 | Power train system | Transmission mounting bolt, nut(Rubber, 2EA) | M24×3.0 | 100 ± 15 | 723 ± 108 | |
| 18 | | Transmission mounting bolt(Bracket) | M20×2.5 | 46.3 ± 7.0 | 335± 50.6 | |
| 19 | | Front axle mounting bolt, nut | -#0293(VOLVO) | M24×2.0 | 100 ± 15 | 723± 108 |
| | | | #0294-(ZF) | M27×2.0 | 135 ± 15 | 976± 108 |
| 20 | | Rear axle support mounting bolt, nut | M36×3.0 | 308 ± 46.2 | 2228± 334 | |
| 21 | | Tire mounting nut | M22×1.5 | 61 ± 2.0 | 441± 14.5 | |
| 22 | | Drive shaft joint mounting bolt, nut | 1/2-20UNF | 15 ± 2.0 | 108± 14.5 | |
| 23 | Others | Counterweight mounting bolt | M30×3.5 | 199 ± 29.9 | 1439± 216 | |
| 24 | | Operator's seat mounting bolt | M8×1.25 | 3.4 ± 0.8 | 24.6± 5 | |
| 25 | | ROPS Cab mounting bolt(4EA) | M27×2.0 | 125 ± 15 | 904 ± 108 | |

6. TORQUE CHART

Use following table for unspecified torque.

1) BOLT AND NUT

(1) Coarse thread

| Bolt size | 8T | | 10T | |
|------------|-------------|-------------|-------------|-------------|
| | kgf · m | lbf · ft | kgf · m | lbf · ft |
| M 6 × 1.0 | 0.85 ~ 1.25 | 6.15 ~ 9.04 | 1.14 ~ 1.74 | 8.2 ~ 12.6 |
| M 8 × 1.25 | 2.0 ~ 3.0 | 14.5 ~ 21.7 | 2.73 ~ 4.12 | 19.7 ~ 29.8 |
| M10 × 1.5 | 4.0 ~ 6.0 | 28.9 ~ 43.4 | 5.5 ~ 8.3 | 39.8 ~ 60 |
| M12 × 1.75 | 7.4 ~ 11.2 | 53.5 ~ 79.5 | 9.8 ~ 15.8 | 71 ~ 114 |
| M14 × 2.0 | 12.2 ~ 16.6 | 88.2 ~ 120 | 16.7 ~ 22.5 | 121 ~ 167 |
| M16 × 2.0 | 18.6 ~ 25.2 | 135 ~ 182 | 25.2 ~ 34.2 | 182 ~ 247 |
| M18 × 2.5 | 25.8 ~ 35.0 | 187 ~ 253 | 35.1 ~ 47.5 | 254 ~ 343 |
| M20 × 2.5 | 36.2 ~ 49.0 | 262 ~ 354 | 49.2 ~ 66.6 | 356 ~ 482 |
| M22 × 2.5 | 48.3 ~ 63.3 | 350 ~ 457 | 65.8 ~ 98.0 | 476 ~ 709 |
| M24 × 3.0 | 62.5 ~ 84.5 | 452 ~ 611 | 85.0 ~ 115 | 615 ~ 832 |
| M30 × 3.5 | 124 ~ 168 | 898 ~ 1214 | 169 ~ 229 | 1223 ~ 1655 |
| M36 × 4.0 | 174 ~ 236 | 1261 ~ 1703 | 250 ~ 310 | 1808 ~ 2242 |

(2) Fine thread

| Bolt size | 8T | | 10T | |
|------------|--------------|-------------|-------------|-------------|
| | kgf · m | lbf · ft | kgf · m | lbf · ft |
| M 8 × 1.0 | 2.17 ~ 3.37 | 15.7 ~ 24.3 | 3.04 ~ 4.44 | 22.0 ~ 32.0 |
| M10 × 1.25 | 4.46 ~ 6.66 | 32.3 ~ 48.2 | 5.93 ~ 8.93 | 42.9 ~ 64.6 |
| M12 × 1.25 | 7.78 ~ 11.58 | 76.3 ~ 83.7 | 10.6 ~ 16.0 | 76.6 ~ 115 |
| M14 × 1.5 | 13.3 ~ 18.1 | 96.2 ~ 130 | 17.9 ~ 24.1 | 130 ~ 174 |
| M16 × 1.5 | 19.9 ~ 26.9 | 144 ~ 194 | 26.6 ~ 36.0 | 193 ~ 260 |
| M18 × 1.5 | 28.6 ~ 43.6 | 207 ~ 315 | 38.4 ~ 52.0 | 278 ~ 376 |
| M20 × 1.5 | 40.0 ~ 54.0 | 289 ~ 390 | 53.4 ~ 72.2 | 386 ~ 522 |
| M22 × 1.5 | 52.7 ~ 71.3 | 381 ~ 515 | 70.7 ~ 95.7 | 512 ~ 692 |
| M24 × 2.0 | 67.9 ~ 91.9 | 491 ~ 664 | 90.9 ~ 123 | 658 ~ 890 |
| M30 × 2.0 | 137 ~ 185 | 990 ~ 1338 | 182 ~ 248 | 1314 ~ 1795 |
| M36 × 3.0 | 192 ~ 260 | 1389 ~ 1879 | 262 ~ 354 | 1893 ~ 2561 |

2) PIPE AND HOSE(FLARE TYPE)

| Thread size | Width across flat(mm) | kgf · m | lbf · ft |
|-------------|-----------------------|---------|----------|
| 1/4" | 19 | 4 | 28.9 |
| 3/8" | 22 | 5 | 36.2 |
| 1/2" | 27 | 9.5 | 68.7 |
| 3/4" | 36 | 18 | 130 |
| 1" | 41 | 21 | 152 |
| 1-1/4" | 50 | 35 | 253 |

3) PIPE AND HOSE(ORFS TYPE)

| Thread size | Width across flat(mm) | kgf · m | lbf · ft |
|-------------|-----------------------|---------|----------|
| 9/16-18 | 19 | 4 | 28.9 |
| 11/16-16 | 22 | 5 | 36.2 |
| 13/16-16 | 27 | 9.5 | 68.7 |
| 1-3/16-12 | 36 | 18 | 130 |
| 1-7/16-12 | 41 | 21 | 152 |
| 1-11/16-12 | 50 | 35 | 253 |

4) FITTING

| Thread size | Width across flat(mm) | kgf · m | lbf · ft |
|-------------|-----------------------|---------|----------|
| 1/4" | 19 | 4 | 28.9 |
| 3/8" | 22 | 5 | 36.2 |
| 1/2" | 27 | 9.5 | 68.7 |
| 3/4" | 36 | 18 | 130 |
| 1" | 41 | 21 | 152 |
| 1-1/4" | 50 | 35 | 253 |

7. RECOMMENDED LUBRICANTS

Use only oils listed below or equivalent.

Do not mix different brand oil.

| Service point | Kind of fluid | Capacity l (U.S. gal) | Ambient temperature °C (°F) | | | | | | |
|----------------------------|--|--|-------------------------------------|-------------|-----------|------------|------------|------------|-------------|
| | | | -20 (-4) | -10 (14) | 0 (32) | 10 (50) | 20 (68) | 30 (86) | 40 (104) |
| Engine oil pan | Engine oil | 18(4.8) | SAE 30 | | | | | | |
| | | | SAE 10W | | | | | | |
| | | | SAE 10W-30 | | | | | | |
| | | | SAE 15W-40 | | | | | | |
| Transmission | Oil | 32(8.5) | SAE 10W-30 | | | | | | |
| | | | SAE 15W-40 | | | | | | |
| VOLVO axle (-#0293) | Gear oil | Front : 45(11.9) Rear : 40(10.6) | SAE 80W-90LS/API GL-5 | | | | | | |
| ZF axle (#0294-) | UTTO | Front : 38(10.0) Rear : 31(8.2) | *Refer to below list | | | | | | |
| Hydraulic tank | Hydraulic oil | Tank: 150(39.7) System: 260(69) | ISO VG 32 | | | | | | |
| | | | ISO VG 46 | | | | | | |
| | | | ISO VG 68 | | | | | | |
| Fuel tank | Diesel fuel | 330(87.2) | ASTM D975 NO. 1 | | | | | | |
| | | | ASTM D975 NO. 2 | | | | | | |
| Fitting (Grease nipple) | Grease | As required | NLGI NO. 1 | | | | | | |
| | | | NLGI NO. 2 | | | | | | |
| Radiator | Mixture of antifreeze and water 50 : 50 | 39(10.3) | Ethylene glycol base permanent type | | | | | | |

• SAE : Society of Automotive Engineers

• API : American Petroleum Institute

• ISO : International Organization for Standardization

• NLGI : National Lubricating Grease Institute

• ASTM : American Society of Testing and Material

• UTTO : Universal Tractor Transmission Oil

* Recommended oil list

- BP TERRAC SUPER TRANSMISSION 10W-30

- CASTROL AGRI TRANS PLUS 10W-30

- MOBILFLUID 426

- SHELL DONAX TD 10W-30

- TOTAL DYNATRANS MPV