

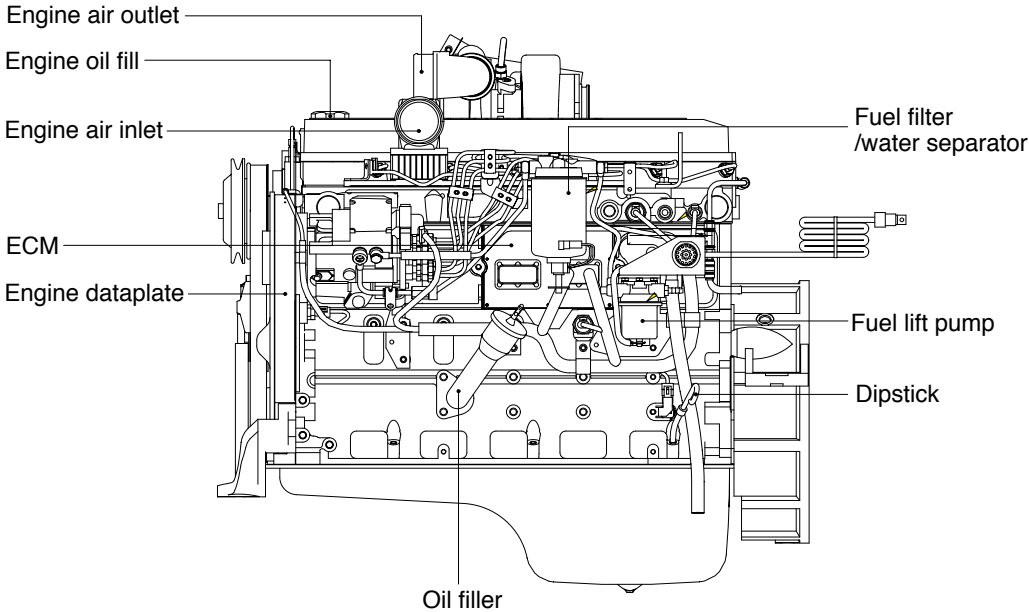
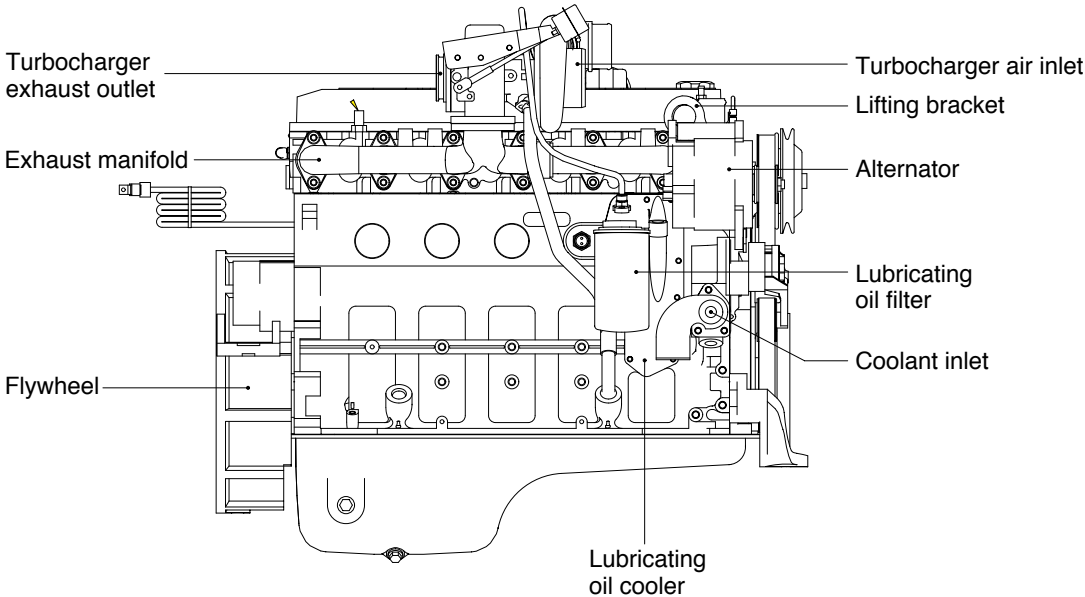
## SECTION 2 ENGINE

Group 1 Structure and Function ----- 2-1

# SECTION 2 ENGINE

## GROUP 1 STRUCTURE AND FUNCTION

### 1. STRUCTURE



7607EG01

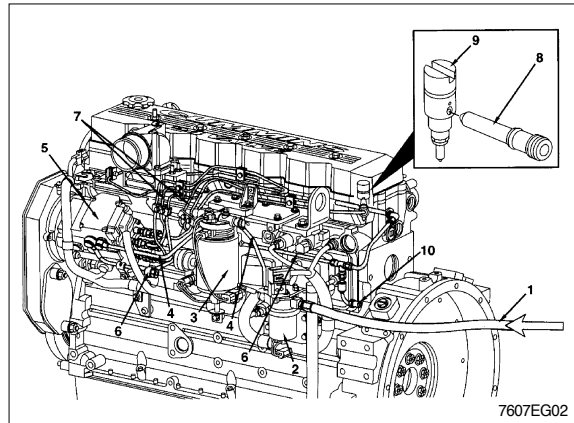
- Direct 4-stroke, 6-cylinders, water-cooling and charge air cooled diesel engine in installed, cylinder block and cylinder head are made of case iron and turbocharger is attached.

## 2. SYSTEM DIAGRAMS

The following drawings show the flow through the engine systems.

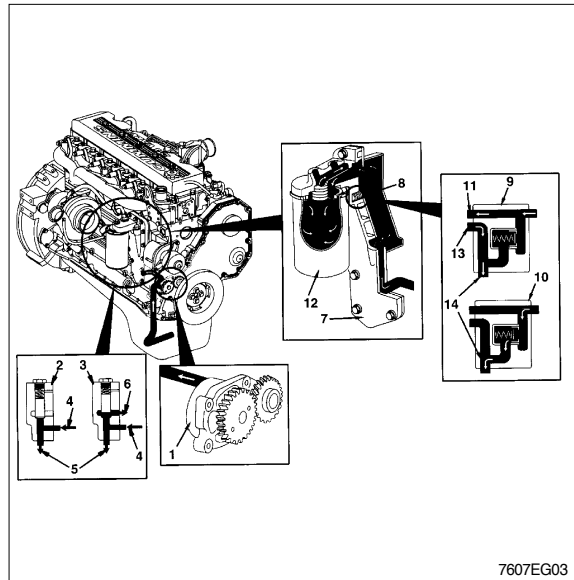
### 1) Fuel system

- 1 Fuel from supply tank
- 2 Electronic lift pump
- 3 Fuel filter and water separator
- 4 Low pressure supply lines
- 5 Injection pump
- 6 Fuel drain line
- 7 High pressure supply lines
- 8 Fuel connector
- 9 Closed nozzle injectors
- 10 Fuel return to supply tank



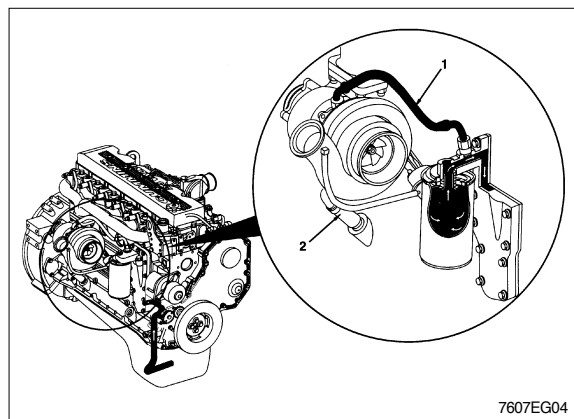
### 2) Lubricating oil system

- 1 Filter bypass valve
- 2 Lubricating oil cooler
- 3 Full-flow lubricating oil filter
- 4 Filter bypass valve closed
- 5 Filter bypass valve open
- 6 Main lubricating oil rifle
- 7 From lubricating oil filter
- 8 To lubricating oil filter
- 9 Gerotor lubricating oil pump
- 10 Pressure regulating valve closed
- 11 Pressure regulating valve open
- 12 To lubricating oil pump
- 13 From lubricating oil pump
- 14 To lubricating oil cooler



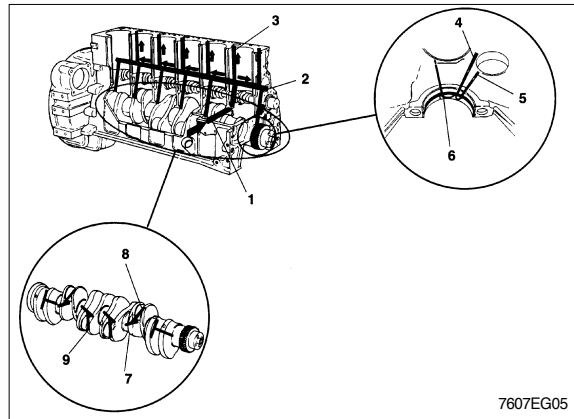
### (1) Lubrication for the turbocharger

- 1 Lubricating oil supply
- 2 Lubricating oil drain



## (2) Lubrication for the power components

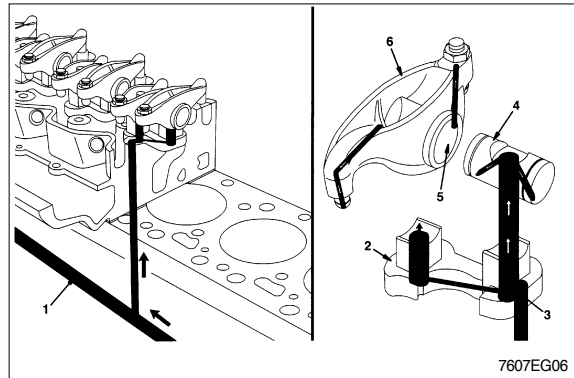
- 1 To valve train
- 2 Main lubricating oil rifle
- 3 From lubricating oil cooler
- 4 To connecting rod bearing
- 5 Conneting rod journal
- 6 Crankshaft main journal
- 7 From main lubricating oil rifle
- 8 To camshaft
- 9 To piston cooling nozzle.



7607EG05

## (3) Lubrication for the overhead

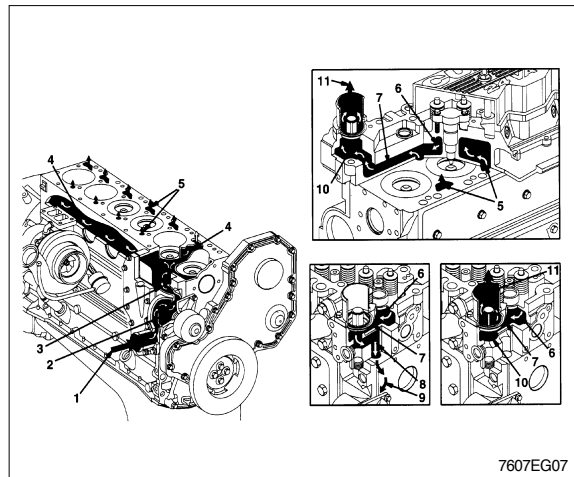
- 1 Main lubricating oil rifle
- 2 Rocker lever support
- 3 Transfer slot
- 4 Rocker lever shaft
- 5 Rocker lever bore
- 6 Rocker lever



7607EG06

## 3) Cooling system

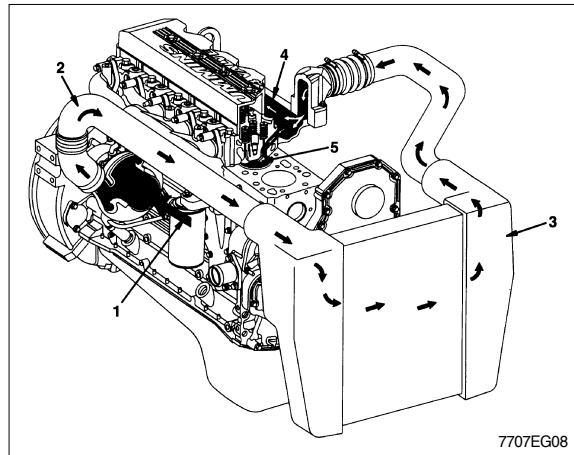
- 1 Coolant inlet
- 2 Pump Impeller
- 3 Coolant flows past lubricating oil cooler
- 4 Coolant flows past cylinders
- 5 Coolant flows from cylinder block to cylinder head
- 6 Coolant flows past injector
- 7 Coolant flows to thermostat housing
- 8 Coolant bypass passage
- 9 Coolant flows to pump inlet
- 10 Bypass closed
- 11 Coolant flows back to radiator



7607EG07

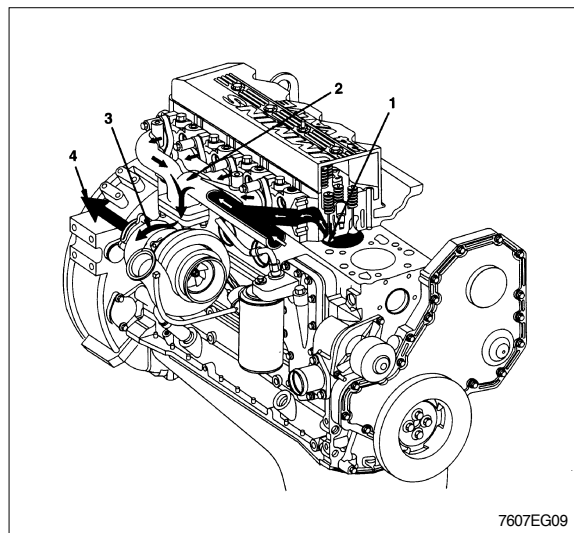
#### 4) Air intake system

- 1 Intake air inlet to turbocharger
- 2 Turbocharger air to charge air cooler
- 3 Charge air cooler
- 4 Intake manifold  
(Integral part of cylinder head)
- 5 Intake valve



#### 5) Exhaust system

- 1 Exhaust valve
- 2 Exhaust manifold(pulse type)
- 3 Dual-Entry turbocharger
- 4 Turbocharger exhaust outlet



#### 6) Compressed air system

- 1 Air in
- 2 Air out
- 3 Coolant in
- 4 Coolant out
- 5 Lubricating oil in
- 6 Lubricating oil out is internal to the gear housing

