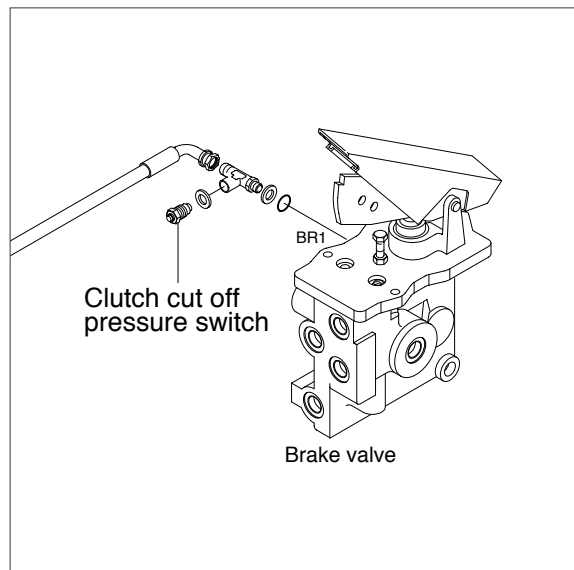


GROUP 3 TESTS AND ADJUSTMENTS

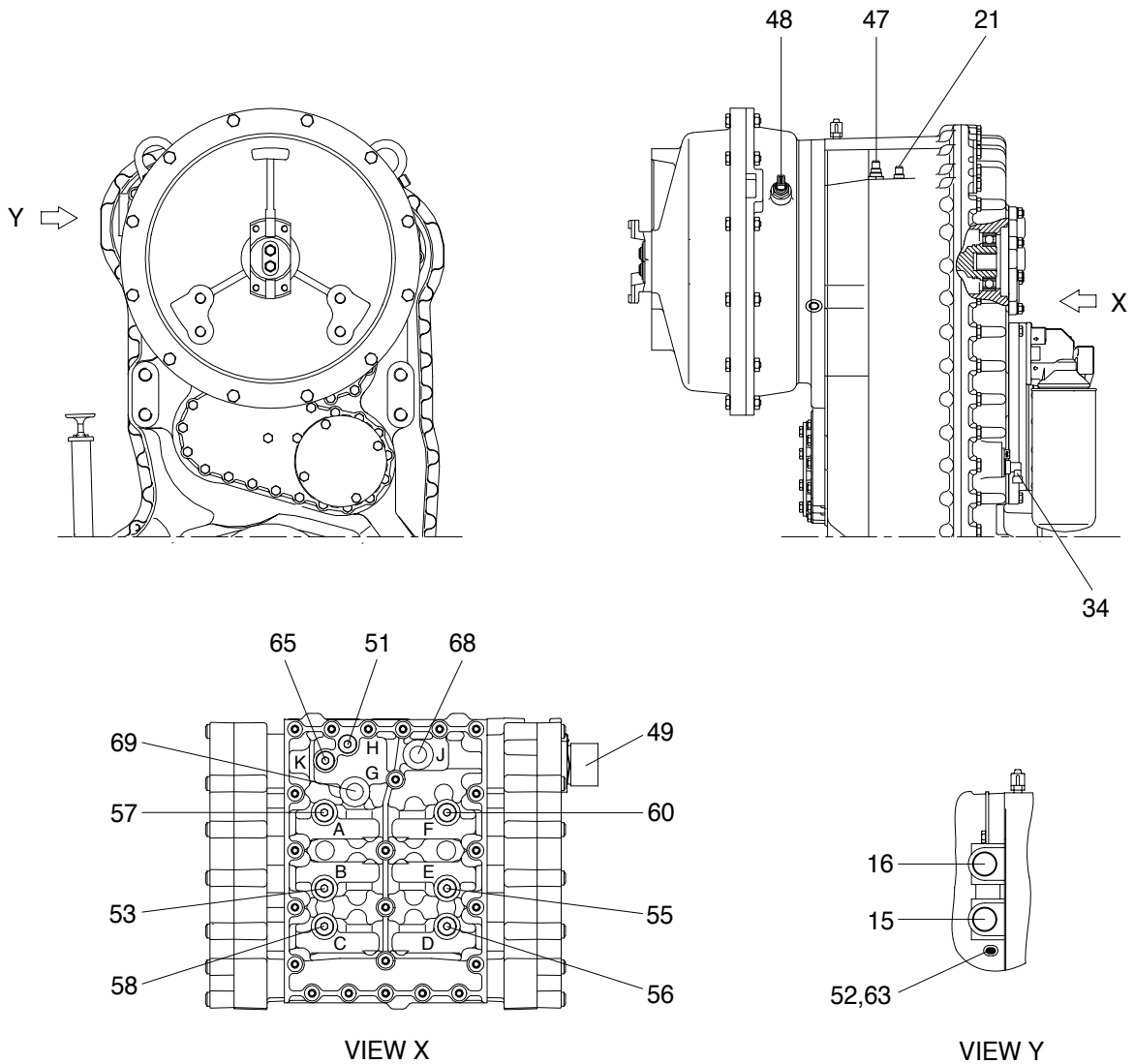
1. CLUTCH CUT-OFF PRESSURE SWITCH TEST

The setting pressure of the clutch cut-off pressure switch should be suited with the specification. The rated pressure is 25kgf/cm². For the detailed method for pressure adjusting, refer to page 4-22.



2. TRANSMISSION MEASURING POINTS AND CONNECTIONS

The measurements have to be carried out at hot transmission (About 80~95, C).



1) OIL PRESSURE AND TEMPERATURE

| Port | Description | | Size |
|------|---|---|-----------|
| 51 | Converter inlet-opening pressure(9bar) | H | M10 × 1 |
| 52 | Converter outlet-opening pressure(3.5bar) | | M14 × 1.5 |
| 53 | Forward clutch(16+2bar) | B | M10 × 1 |
| 55 | Reverse clutch(16+2bar) | E | M10 × 1 |
| 56 | 1st clutch(16+2bar) | D | M10 × 1 |
| 57 | 2nd clutch(16+2bar) | A | M10 × 1 |
| 58 | 3rd clutch(16+2bar) | C | M10 × 1 |
| 60 | 4th clutch(16+2bar) | F | M10 × 1 |
| 63 | Converter outlet temperature 100, C , short-time 120, C | | M14 × 1.5 |
| 65 | System pressure(16+2bar) | K | M10 × 1 |

2) DELIVERY RATES

| Port | Description | Size |
|------|--------------------------------|------------------|
| 15 | Connection to oil cooler | 1 5/16"-12UNF-2B |
| 16 | Connection from the oil cooler | 1 5/16"-12UNF-2B |

3) INDUCTIVE TRANSMITTER AND SPEED SENSOR

| Port | Description | Size |
|------|--|-----------|
| 21 | Inductive transmitter n turbine | M18 x 1.5 |
| 34 | Speed sensor n output and speedometer | - |
| 47 | Inductive transmitter n central gear train | M18 x 1.5 |
| 48 | Inductive transmitter n engine | M18 x 1.5 |

4) CONNECTIONS

| Port | Description | Size |
|------|---|-----------|
| 49 | Plug connection on the hydraulic control unit | - |
| 68 | Pilot pressure(Optional) J | M16 x 1.5 |
| 69 | System pressure(Optional) G | M16 x 1.5 |