

GROUP 3 CLUSTER

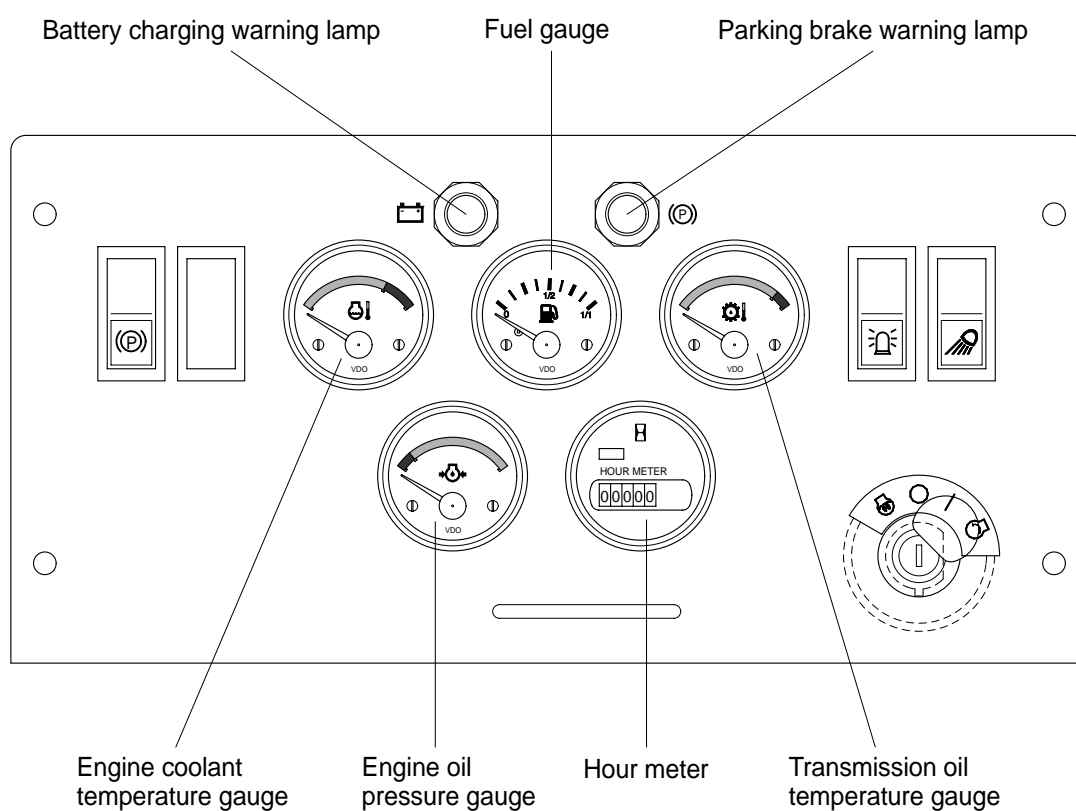
1. GAUGES AND LAMPS

The monitor panel consists of gauges and lamps as shown below, to warn the operator in case of abnormal machine operation or conditions for the appropriate operation and inspection.

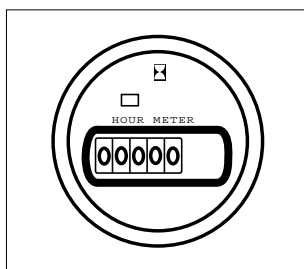
- Gauges : Indicate operating status of the machine.
- Warning lamps : Indicate abnormality of the machine(Red).

※ **The monitor installed on this machine does not entirely guarantee the condition of the machine.**

Daily inspection should be performed according to operator's manual.

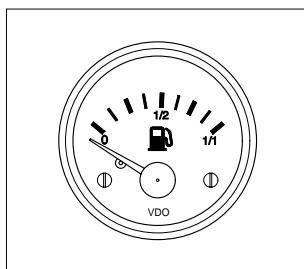


1) HOUR METER



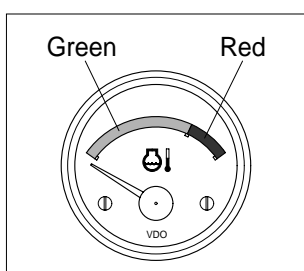
- (1) This meter shows the total operation hours of the machine.
- (2) Always ensure the operating condition of the meter during the machine operation. Inspect and service the machine based on hour meter.

2) FUEL GAUGE



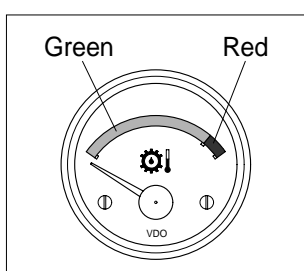
- (1) This gauge indicates the amount of fuel in the fuel tank.
- (2) Fill the fuel when the indicator moves **O** point, refuel as soon as possible to avoid running out of fuel.
- ※ **If the gauge indicates below O point even though the machine is on the normal condition, check the electric device as that can be caused by the poor connection of electricity or sensor.**

3) ENGINE COOLANT TEMPERATURE GAUGE



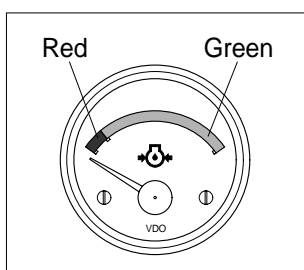
- (1) This indicates the temperature of coolant.
 - Green range : 40~105°C(104~221°F)
 - Red range : 105°C(221°F) above
- (2) The green range illuminates when operating.
- (3) Keep idling engine at low speed until the green range indicates, before operation of machine.
- (4) When the red range indicates, turn OFF the engine, check the radiator and engine after engine has cooled down.

4) TRANSMISSION OIL TEMPERATURE GAUGE



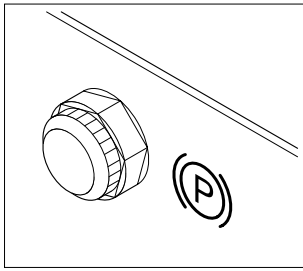
- (1) This range indicates the temperature of transmission oil.
 - Green range : 50~120°C(122~248°F)
 - Red range : 120°C(248°F) above
- (2) The green range indicates when operating.
- (3) Keep idling engine at low speed until the green range indicates, before operation of machine.
- (4) If the indicator is in the red range, it means the transmission is overheated. Be careful that the indicator does not move into

5) ENGINE OIL PRESSURE GAUGE



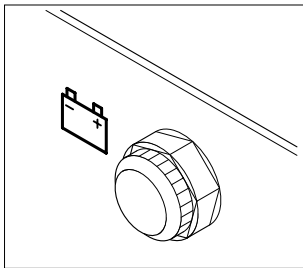
- (1) This indicates the engine oil pressure.
 - Green range : 1~5bar
 - Red range : 1bar below
- (2) The green range illuminates when operating.
- (3) Keep idling engine at low speed until the green range indicates, before operation of machine.
- (4) When the red range indicates, turn OFF the engine, correct the cause.

6) PARKING BRAKE PILOT LAMP



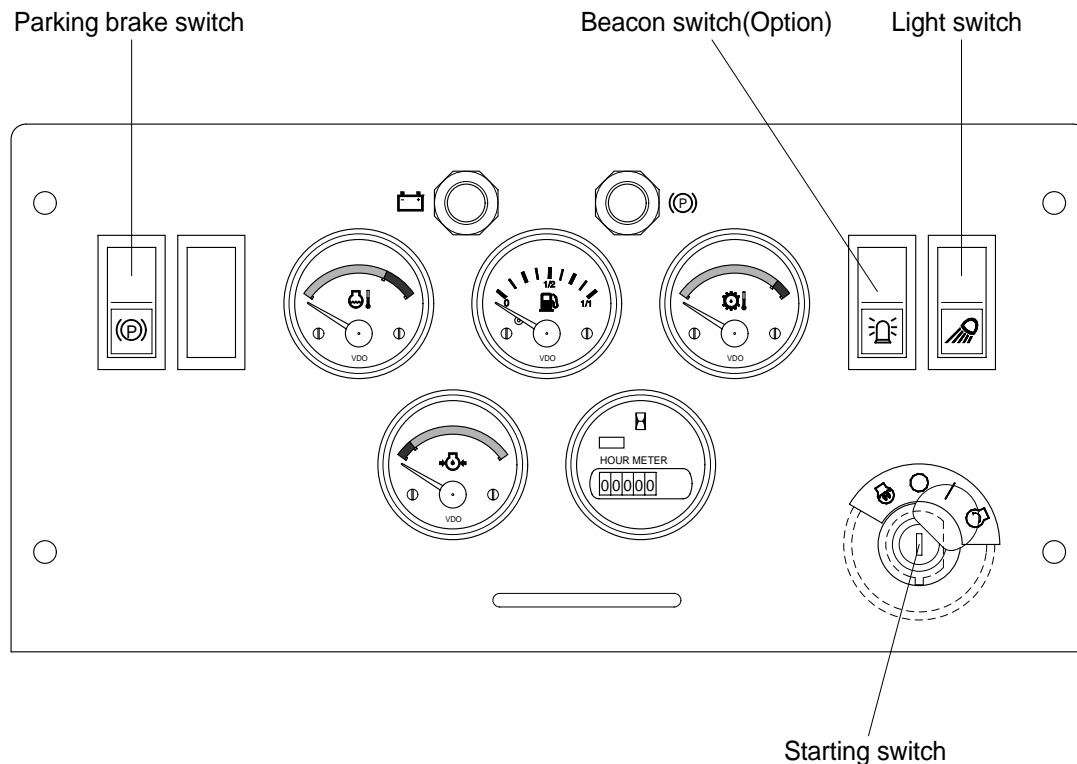
- (1) When the parking brake switch is actuated, the lamp lights ON.
※ **Check the lamp is OFF before traveling.**

7) BATTERY CHARGING WARNING LAMP

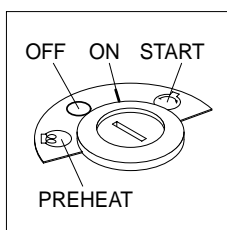


- (1) This lamp is ON when the starting switch is ON, it is turned OFF after starting the engine.
(2) Check the battery charging circuit when this lamp comes ON, during engine operation.

2. SWITCHES

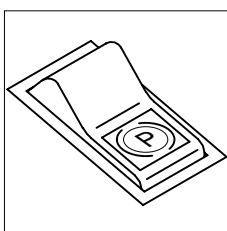


1) STARTING SWITCH



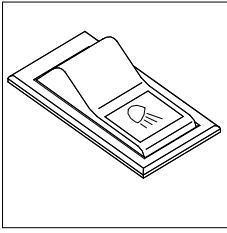
- (1) There are four positions, PREHEAT, OFF, ON and START.
- **PREHEAT** : Use for starting the engine in cold wether. If the key is in this position, the engine will be warmed up for max 30 seconds.
 - **OFF** : None of electrical circuits activate.
 - **ON** : All the systems of machine operate.
 - **START** : Use when operating the engine starting. Release key immediately after starting.
- ※ **Check if the transmission control lever in the neutral position before starting the engine.**

2) PARKING BRAKE SWITCH



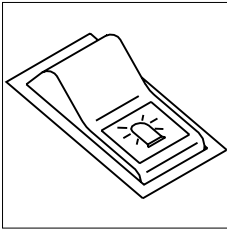
- (1) If this switch is pressed, the parking brake will start to operate and the parking brake warning lamp will comes ON.
- (2) The below indicator lamp is turned ON when operating light switch is ON.

3) LIGHT SWITCH



- (1) This switch turns ON the work lamps located on the front and rear of the canopy.
- (2) The below indicator lamp is turned ON when operating this switch.

4) BEACON SWITCH(Option)



- (1) This switch turns ON the rotary light on the cab.
- (2) The below indicator lamp is turned ON when operating this switch.