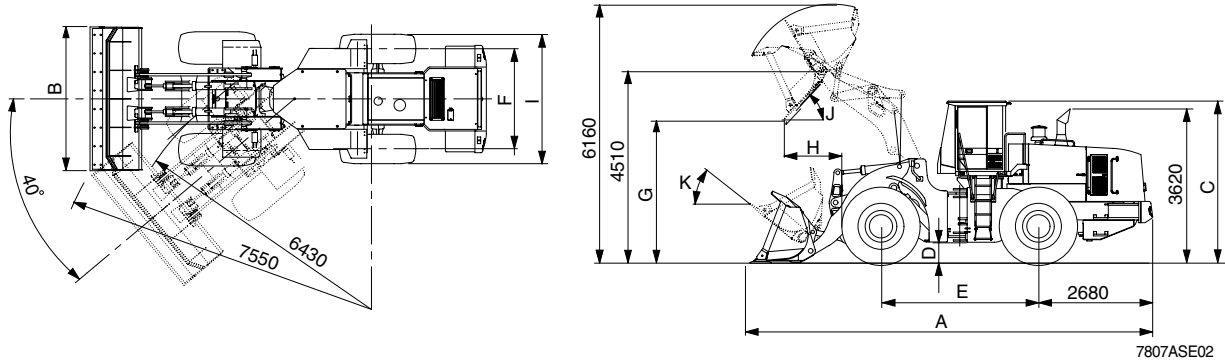


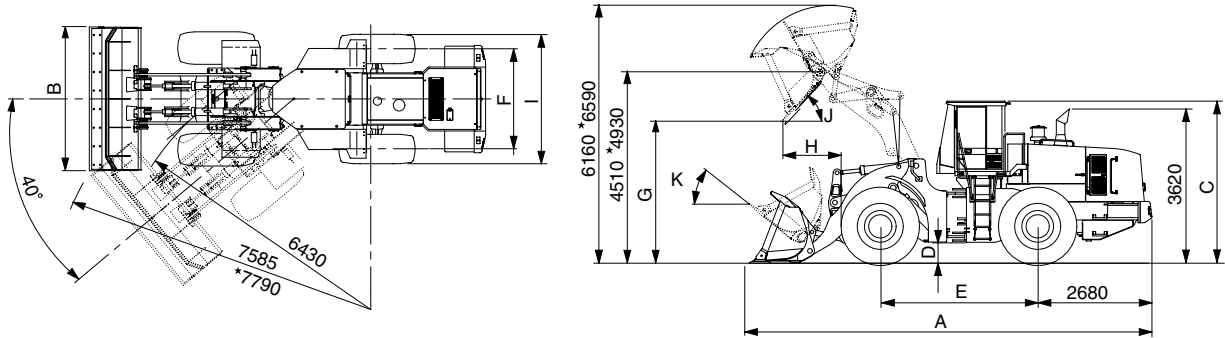
## 2. SPECIFICATIONS

### 1) WITHOUT TOOTH AND CUTTING EDGE TYPE BUCKET



Description		Unit	Specification	
Operating weight		kg(lb)	29300(64600)	
Bucket capacity	Struck	m <sup>3</sup> (yd <sup>3</sup> )	4.1(5.4)	
	Heaped		4.8(6.3)	
Overall length	A	mm(ft-in)	9325(30' 7")	
Overall width	B		3450(11' 4")	
Overall height	C		3805(12' 6")	
Ground clearance	D		475( 1' 7")	
Wheelbase	E		3700(12' 2")	
Tread	F		2440( 8' 0")	
Dump clearance at 45°	G		3385(11' 1")	
Dump reach at 45°	H		1330( 4' 4")	
Width over tires	I		3220(10' 7")	
Dump angle	J		Degree (°)	47
Roll back angle(Carry position)	K			48
Cycle time	Lift(With load)	sec	6.4	
	Dump(With load)		1.4	
	Lower(Empty)		3	
Maximum travel speed		km/hr(mph)	33.9(21.1)	
Braking distance		m(ft-in)	12(39' 4")	
Minimum turning radius(Center of outside tire)			6.43(21' 1")	
Gradeability		Degree (°)	30	
Travel speed	Forward	First gear	6.2(3.9)	
		Second gear	11.5(7.2)	
		Third gear	17.6(11.0)	
	Reverse	Fourth gear	34.4(21.4)	
		First gear	6.2(3.9)	
		Second gear	11.5(7.2)	
		Third gear	23.8(14.8)	

## 2) BOLT-ON CUTTING EDGE TYPE BUCKET

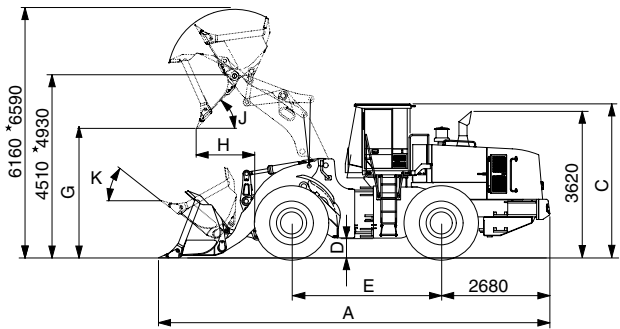
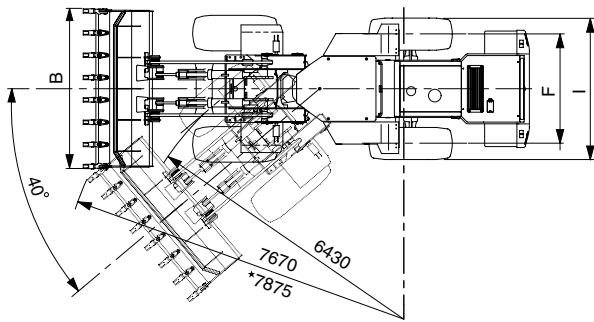


7807ASE03

Description		Unit	Specification	
Operating weight		kg(lb)	29300(64600) / *30000(66100)	
Bucket capacity	Struck	m <sup>3</sup> (yd <sup>3</sup> )	4.3(5.6)	
	Heaped		5.1(6.7)	
Overall length	A	mm(ft-in)	9440(31' 0") / *9930(32' 7")	
Overall width	B		3450(11' 4")	
Overall height	C		3805(12' 6")	
Ground clearance	D		475( 1' 7")	
Wheelbase	E		3700(12' 2")	
Tread	F		2440( 8' 0")	
Dump clearance at 45°	G		3300(10' 10") / *3720(12' 2")	
Dump reach(Full lift)	H		1365( 4' 6") / *1430( 4' 8")	
Width over tires	I		3220(10' 7")	
Dump angle	J		Degree (°)	47
Roll back angle(Carry position)	K			48 / *49
Cycle time	Lift(With load)		sec	6.4
	Dump(With load)			1.4
	Lower(Empty)	3		
Maximum travel speed		km/hr(mph)	33.9(21.1)	
Braking distance		m(ft-in)	12(39' 4")	
Minimum turning radius(Center of outside tire)			6.43(21' 1")	
Gradeability		Degree (°)	30	
Travel speed	Forward	First gear	6.2(3.9)	
		Second gear	11.5(7.2)	
		Third gear	17.6(11.0)	
		Fourth gear	34.4(21.4)	
	Reverse	First gear	6.2(3.9)	
		Second gear	11.5(7.2)	
Third gear		23.8(14.8)		

\* : HL780XTD-7A

### 3) WITH TOOTH TYPE BUCKET



7807ASE04

Description		Unit	Specification	
Operating weight		kg(lb)	29300(64600) / *30000(66100)	
Bucket capacity	Struck	m <sup>3</sup> (yd <sup>3</sup> )	4.1(5.4)	
	Heaped		4.8(6.3)	
Overall length	A	mm(ft-in)	9600(31' 6") / *10140(33' 3")	
Overall width	B		3500(11' 6")	
Overall height	C		3805(12' 6")	
Ground clearance	D		475( 1' 7")	
Wheelbase	E		3700(12' 2")	
Tread	F		2440( 8' 0")	
Dump clearance at 45°	G		3140(10' 4") / *3565(11' 8")	
Dump reach(Full lift)	H		1485( 4' 10") / *1545( 5' 1")	
Width over tires	I		3220(10' 7")	
Dump angle	J		Degree (°)	47
Roll back angle(Carry position)	K			48 / *49
Cycle time	Lift(With load)		sec	6.4
	Dump(With load)			1.4
	Lower(Empty)	3		
Maximum travel speed		km/hr(mph)	33.9(21.1)	
Braking distance		m(ft-in)	12(39' 4")	
Minimum turning radius(Center of outside tire)			6.43(21' 1")	
Gradeability		Degree (°)	30	
Travel speed	Forward	km/hr(mph)	First gear	6.2(3.9)
			Second gear	11.5(7.2)
			Third gear	17.6(11.0)
			Fourth gear	34.4(21.4)
	Reverse		First gear	6.2(3.9)
			Second gear	11.5(7.2)
Third gear		23.8(14.8)		

\* : HL780XTD-7A