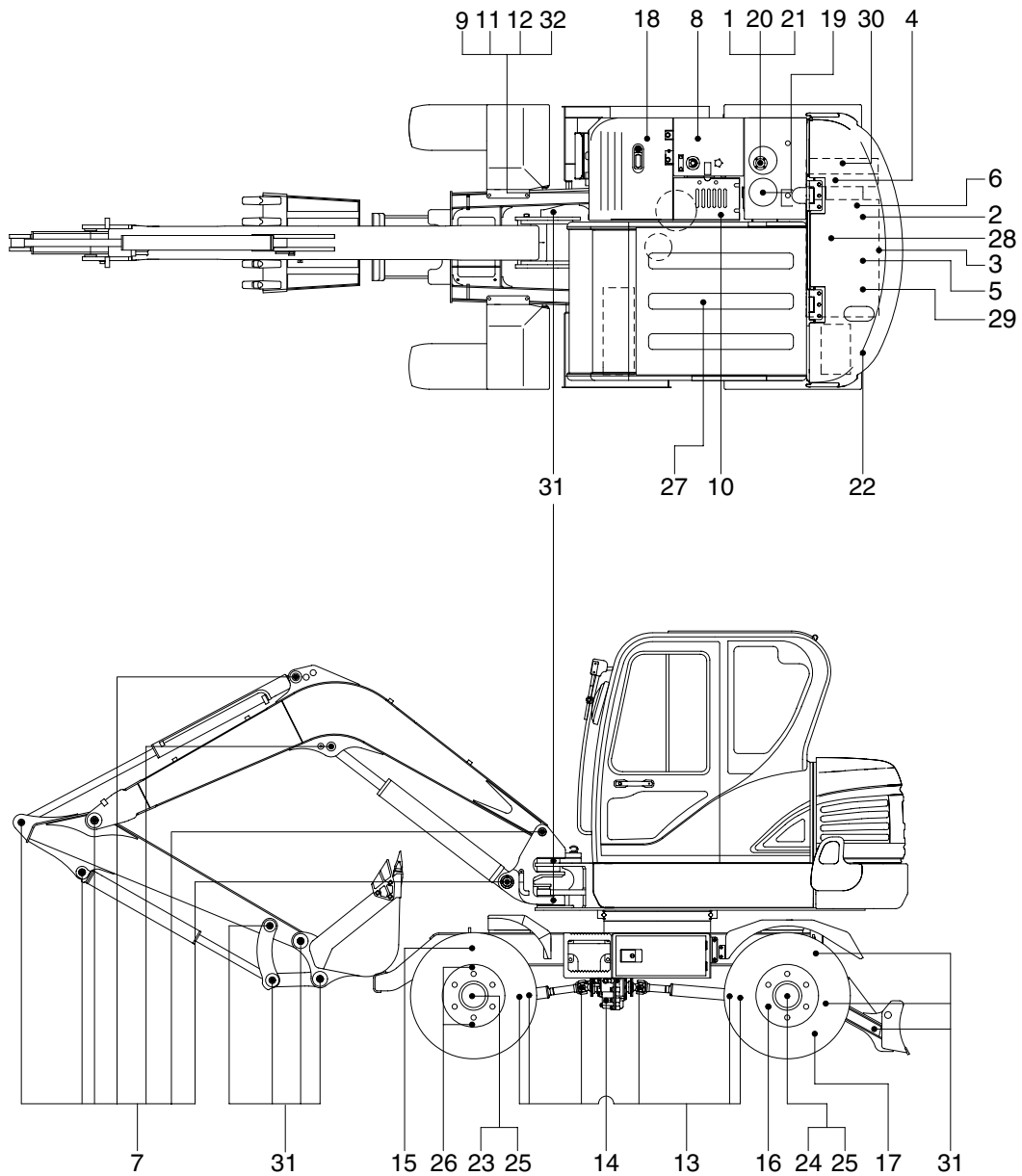


## 5. MAINTENANCE CHART



55W96MA02

### Caution

1. Service intervals are based on the hour meter reading.
2. The number of each item shows the lubrication point on the machine.
3. Stop engine while filling oil, and use no open flames.
4. For other details, refer to the service manual.

| Service interval   | No. | Description                                | Service action | Oil symbol | Capacity / (U.S.gal) | Service points No. |
|--------------------|-----|--|----------------|------------|----------------------|--------------------|
| 10Hours or daily   | 1   | Hydraulic oil level                        | Check, Add     | HO         | 70 (18.5)            | 1                  |
|                    | 2   | Engine oil level                           | Check, Add     | EO         | 11.6 (3.1)           | 1                  |
|                    | 4   | Radiator coolant level                     | Check, Add     | C          | 9.5 (2.5)            | 1                  |
|                    | 5   | Prefilter (water, element)                 | Check, Clean   | -          | -                    | 1                  |
|                    | 6   | Fan belt tension and damage                | Check, Adjust  | -          | -                    | 1                  |
| 50 hours or weekly | 8   | Fuel tank (water, sediment)                | Check, Clean   | -          | -                    | 1                  |
|                    | 9   | Swing bearing                              | Lubricate      | PGL        | -                    | 3                  |
|                    | 10  | Swing reduction gear case (gear oil)       | Check, Add     | GO         | 1.5 (0.4)            | 1                  |
|                    | 12  | Swing gear and pinion                      | Lubricate      | PGL        | -                    | 1                  |
|                    | 13  | Drive shaft(flange bearing)                | Lubricate      | PGL        | -                    | 6                  |
|                    | 14  | Gear box case                              | Check, Add     | GO         | 1.84 (0.5)           | 1                  |
|                    | 15  | Front axle pivot pin bushing               | Check, Add     | PGL        | -                    | 1                  |
|                    | 16  | Wheel nut                                  | Check, Tighten | -          | -                    | 40                 |
|                    | 17  | Tire air pressure                          | Check, Add     | -          | -                    | 8                  |
| 250 Hours          | 31  | Bucket linkage & blade pins                | Lubricate      | PGL        | -                    | 8                  |
|                    | 7   | Attachment pins (swivel type)              | Lubricate      | PGL        | -                    | 7                  |
|                    | 18  | Battery(Electrolyte, Voltage)              | Check          | -          | -                    | 1                  |
|                    | 20  | Air breather element                       | Replace        | -          | -                    | 1                  |
|                    | 23  | Front axle differential gear case          | Check, Add     | GO         | 4.5 (1.19)           | 1                  |
|                    | 24  | Rear axle differential gear case           | Check, Add     | GO         | 4.5 (1.19)           | 1                  |
|                    | 25  | Axle planetary gear case(Front, rear)      | Check, Add     | GO         | 0.4 (0.11)           | 4                  |
|                    | 26  | Front axle steering case                   | Lubricate      | PGL        | -                    | 4                  |
| 500 Hours          | 27  | Air conditioner filter (outer)             | Clean          | -          | -                    | 1                  |
|                    | 2   | Engine oil                                 | Change         | EO         | 11.6(3.1)            | 1                  |
|                    | 3   | Engine oil filter                          | Replace        | -          | -                    | 1                  |
|                    | 5   | Prefilter (water, element)                 | Replace        | -          | -                    | 1                  |
|                    | 28  | Air cleaner element (primary)              | Check, Clean   | -          | -                    | 1                  |
|                    | 29  | Fuel filter element                        | Replace        | -          | -                    | 1                  |
| 1000 Hours         | 30  | Radiator, cooler fin and charge air cooler | Check, Clean   | -          | -                    | 3                  |
|                    | 10  | Swing reduction gear case (gear oil)       | Change         | GO         | 1.5(0.4)             | 1                  |
|                    | 11  | Swing reduction gear case (grease)         | Change         | PGL        | 0.35 (0.09)          | 1                  |
|                    | 14  | Gear box case                              | Change         | GO         | 1.84(0.49)           | 1                  |
|                    | 20  | Hydraulic oil return filter                | Replace        | -          | -                    | 1                  |
|                    | 22  | Pilot line filter element                  | Replace        | -          | -                    | 1                  |
|                    | 23  | Front axle differential gear case          | Change         | GO         | 4.5 (1.19)           | 1                  |
|                    | 24  | Rear axle differential gear case           | Change         | GO         | 4.5 (1.19)           | 1                  |
| 2000 Hours         | 25  | Axle planetary gear case(Front, rear)      | Change         | GO         | 0.4 (0.11)           | 4                  |
|                    | 1   | Hydraulic tank oil* <sup>1</sup>           | Change         | HO         | 70 (18.5)            | 1                  |
|                    | 4   | Radiator coolant                           | Change         | C          | 9.5 (2.5)            | 1                  |
| 5000 hours         | 21  | Hydraulic oil suction strainer             | Check, Clean   | -          | -                    | 1                  |
|                    | 1   | Hydraulic tank oil* <sup>2</sup>           | Change         | HO         | 70 (18.5)            | 1                  |
| As required        | 27  | Air conditioner filters                    | Check, Replace | -          | -                    | 2                  |
|                    | 28  | Air cleaner element(Primary, safety)       | Check, Replace | -          | -                    | 2                  |

\*<sup>1</sup> Conventional hydraulic oil      \*<sup>2</sup> Hyundai genuine long life hydraulic oil

★ Severely dusty area operation only.

※ Oil symbol

Please refer the recommended lubricants for specification.

DF : Diesel fuel      GO : Gear oil      HO : Hydraulic oil  
C : Coolant      PGL : Grease      EO : Engine oil