

## FOREWORD

This manual contains a number of instructions and safety recommendations regarding driving, handling, lubrication, maintenance, inspection and adjustment of the excavator.

The manual is to promote safety maintenance and enhance machine performance.

Keep this manual handy and have all personnel read it periodically.

If you sell the machine, be sure to give this manual to the new owners.

This machine complies with EC directive "89/392/EEC".

1. **Read** and **understand** this manual before operating the machine.

This operator's manual may contain attachments and optional equipment that are not available in your area. Please consult your local Hyundai distributor for those items you require.

Improper operation and maintenance of this machine can be hazardous and could result in serious injury or death.

Some actions involved in operation and maintenance of the machine can cause a serious accident, if they are not done in a manner described in this manual.

The procedures and precautions given in this manual apply only to intended uses of the machine.

If you use your machine for any unintended uses that are not specifically prohibited, you must be sure that it is safe for you and others. In no event should you or others engage in prohibited uses of actions as described in this manual.

2. **Inspect** the jobsite and **follow** the safety recommendations in the **safety hints** section before operating the machine.

3. Use **genuine Hyundai spare parts** for the replacement of parts.

We expressly point out that Hyundai will not accept any responsibility for defects resulting from non-genuine parts or non workmanlike repair.

In such cases Hyundai cannot assume liability for any damage.

Continuing improvements in the design of this machine can lead to changes in detail which may not be reflected in this manual. Consult Hyundai or your Hyundai distributor for the latest available information for your machine or for questions regarding information in this manual.

## BEFORE SERVICING THIS MACHINE

It is the responsibility of the owner and all service and maintenance personnel to avoid accidents and serious injury by keeping this machine properly maintained.

It also is the responsibility of the owner and all service and maintenance personnel to avoid accidents and serious injury while servicing the machine.

No one should service or attempt to repair this machine without proper training and supervision.

All service and maintenance personnel should be thoroughly familiar with the procedures and precautions contained in this manual.

All personnel also must be aware of any federal, state, provincial or local laws or regulations covering the use and service of construction equipment.

The procedures in this manual do not supersede any requirements imposed by federal, state, provincial or local laws.

HYUNDAI can not anticipate every possible circumstance or environment in which this machine may be used and serviced.

All personnel must remain alert to potential hazards.

Work within your level of training and skill.

Ask your supervisor if you are uncertain about a particular task. Do not try to do too much too fast.

Use your common sense.

**TABLE TO ENTER SERIAL NO. AND DISTRIBUTOR**

Machine Serial No.	
Engine Serial No.	
Manufacturing year	
Manufacturer Address	Hyundai Heavy Industries co., Ltd. 1 Chonha-Dong, Dong-Ku Ulsan The Republic of Korea.
Distributor for Europe Address	Hyundai Heavy Industries Europe N. V. Vossendal 11 2240 Geel Belgium
Dealer Address	

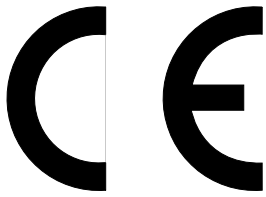
## EC REGULATION APPROVED

- Noise level (89/392/EEC) are as followings.

LWA : 100dB(EU only)

LPA : 77dB

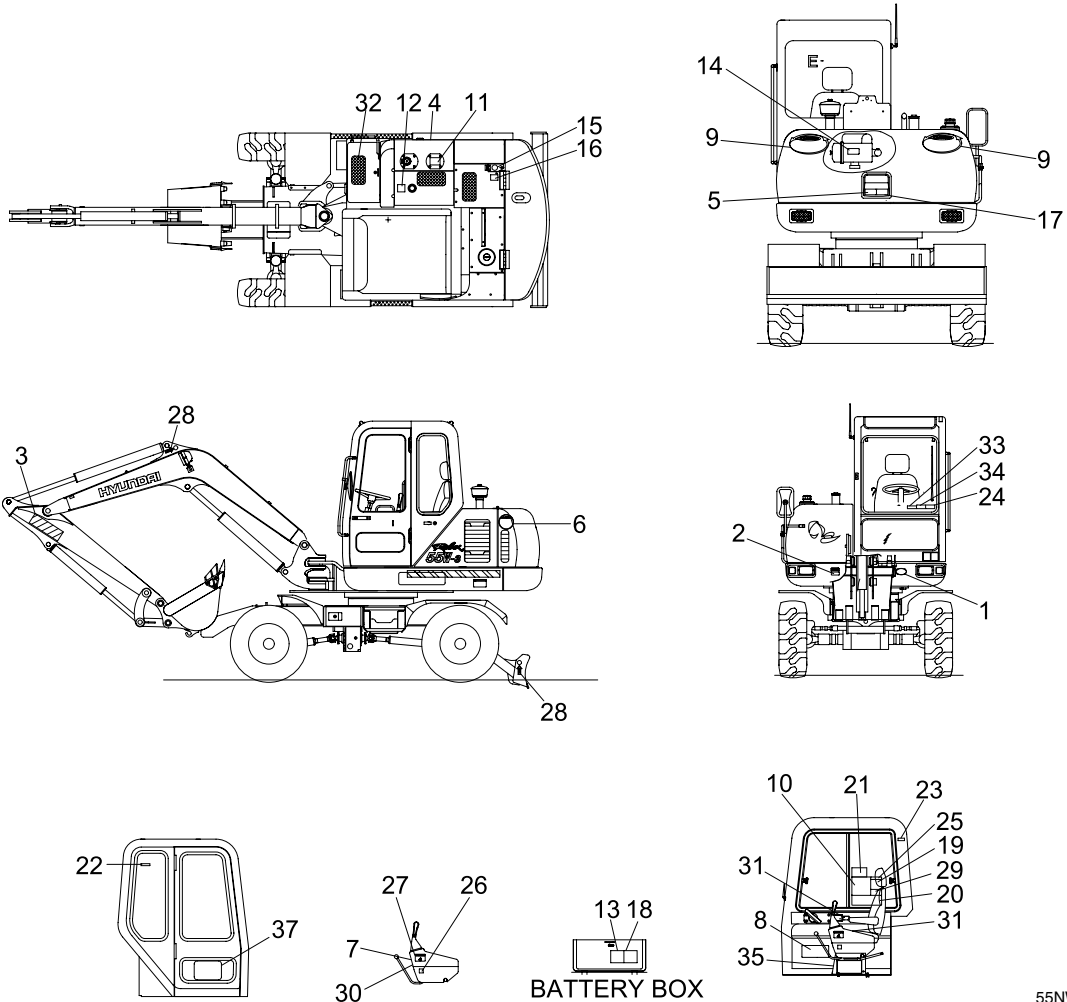
- The value of vibrations transmitted by the operator's seat are lower than standard value of (89/392/EEC).



# SAFETY LABELS

## 1. LOCATION

Always keep these labels clean. If they are lost or damaged, attach them again or replace them with a new label.



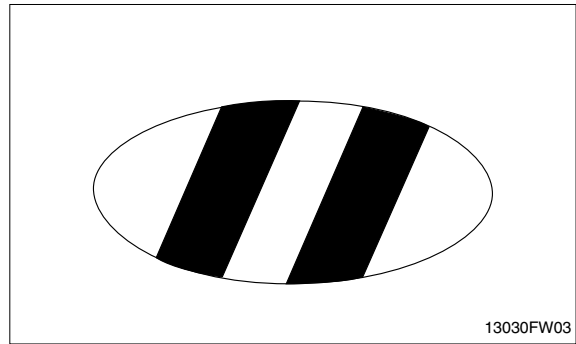
- |    |                     |    |                     |    |                     |
|----|---------------------|----|---------------------|----|---------------------|
| 1  | Name plate          | 14 | Air cleaner         | 26 | Latch decal         |
| 2  | Transporting        | 15 | Radiator cap        | 27 | Safety ideogram     |
| 3  | Travel safety       | 16 | Antifreeze          | 28 | Slings ideogram     |
| 4  | Hydraulic oil level | 17 | Stay fix            | 29 | Control ideogram    |
| 5  | Exhaust             | 18 | battery decal       | 30 | Control ideogram-LH |
| 6  | Keep clear          | 19 | air vent            | 31 | Control ideogram-RH |
| 7  | Safety lever        | 20 | Service instruction | 32 | Step tread          |
| 8  | Service instruction | 21 | Max height reach    | 33 | Boom swing lock     |
| 9  | Keep clear          | 22 | Fire logo           | 34 | Swing lock          |
| 10 | Lift chart          | 23 | Hammer log          | 35 | Swing lock symbol   |
| 11 | Hydraulic oil lub   | 24 | Safety front window |    |                     |
| 12 | Fueling             | 25 | Service socket      |    |                     |
| 13 | Electrolyte         |    |                     |    |                     |

55NW0FE01

## 2. DESCRIPTION

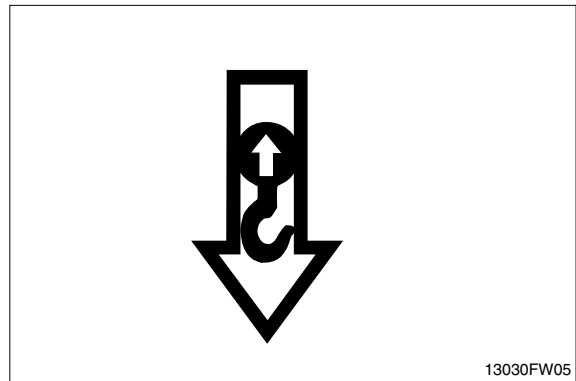
### 1) TRAVEL SAFETY (Item 3)

This label is indicate the end of arm in the travel position.



### 2) SLINGING IDEOGRAM (Item 28)

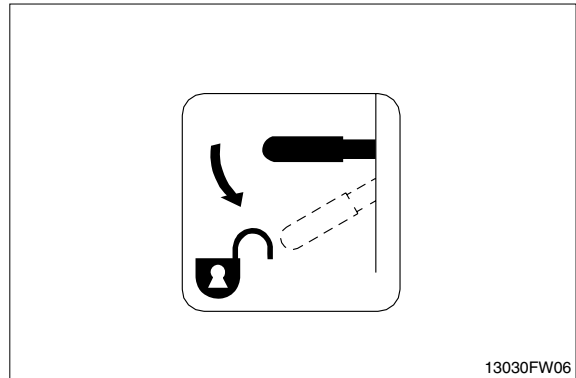
This label is to indicate point of lifting or fixing.



### 3) LATCH (Item 26)

This label is indicate the cab door lock or release position.

**▲ When leaving operator's seat, always lock the cab door.**

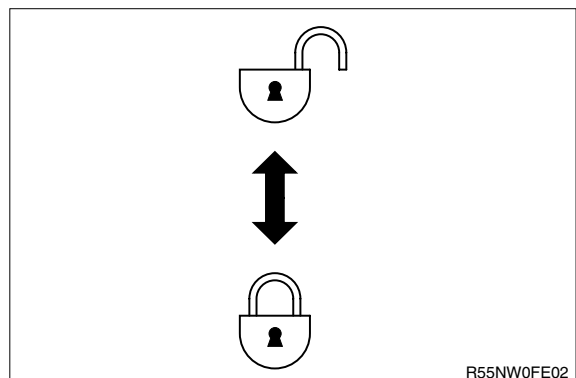


### 4) SWING LOCK SYMBOL (Item 35)

This label is indicate swing lock or release position.

	Release
	Lock

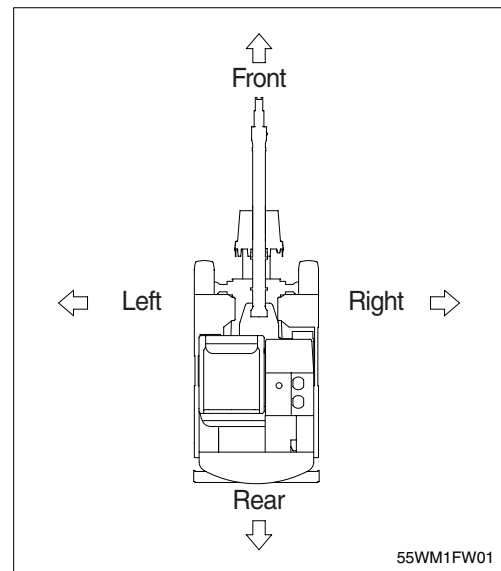
**▲ Before operating the machine, be sure to release the swing lock device.**



## GUIDE

### 1. DIRECTION

The direction of this manual indicate forward, backward, right and left on the standard of operator when the travel motor is in the rear and machine is on the traveling direction.

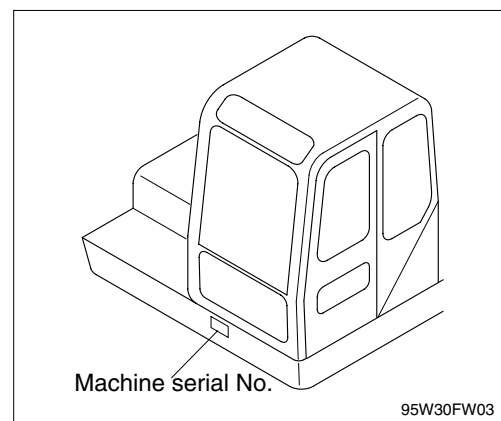


### 2. SERIAL NUMBER

Inform following when you order parts or the machine is out of order.

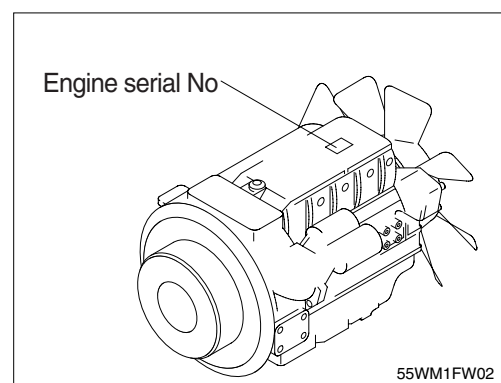
#### 1) MACHINE SERIAL NUMBER

The numbers are located below the right window of the operator's cab.



#### 2) ENGINE SERIAL NUMBER

The numbers are located on the engine name plate.



### 3. SYMBOLS

**▲** Important safety hint.

**△** It indicates matters which can cause the great loss on the machine or the surroundings.

**※** It indicates the useful information for operator.

---

**OPERATOR'S  
MANUAL**

---

**ROBEX 55W-3**