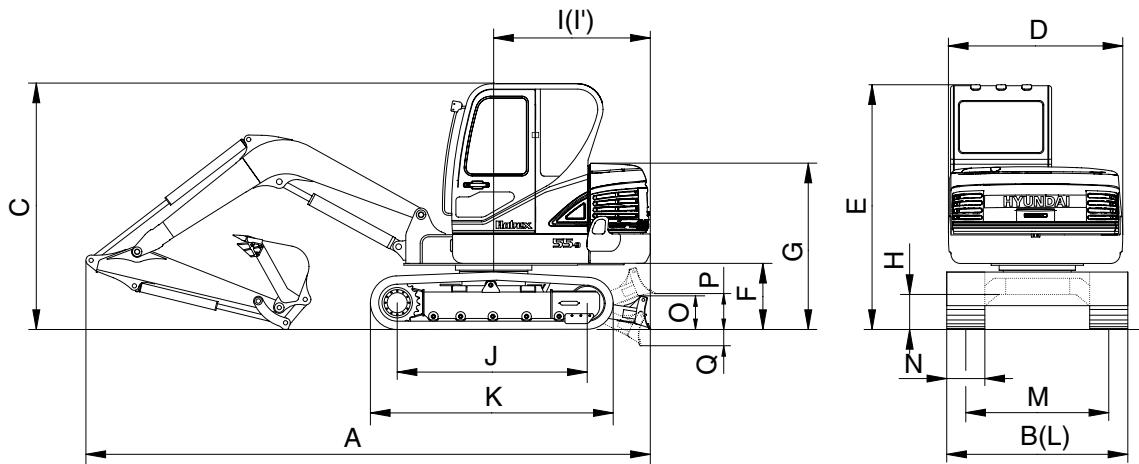


2. SPECIFICATIONS

1) 3.0 m (9' 10") MONO BOOM, 1.6 m (5' 3") ARM, WITH BOOM SWING SYSTEM



5592SP02

Description		Unit	Specification	
Operating weight		kg (lb)	5650 (12460)	
Bucket capacity (SAE heaped), standard		m ³ (yd ³)	0.18 (0.24)	
Overall length	A	mm (ft-in)	5900 (19' 4")	
Overall width, with 380 mm shoe	B		1920 (6' 4")	
Overall height	C		2550 (8' 4")	
Superstructure width	D		1850 (6' 1")	
Overall height of cab	E		2550 (8' 4")	
Ground clearance of counterweight	F		690 (2' 3")	
Engine cover height	G		1690 (5' 7")	
Minimum ground clearance	H		380 (1' 3")	
Rear-end distance	I		1650 (5' 5")	
Rear-end swing radius	I'		1650 (5' 5")	
Distance between tumblers	J		1990 (6' 6")	
Undercarriage length	K		2530 (8' 4")	
Undercarriage width	L		1880 (6' 2")	
Track gauge	M		1500 (4' 11")	
Track shoe width, standard	N		380 (15")	
Height of blade	O		350 (1' 2")	
Ground clearance of blade up	P		410 (1' 4")	
Depth of blade down	Q		560 (1' 10")	
Travel speed (low/high)			km/hr (mph)	2.2/4.0 (1.4/2.5)
Swing speed			rpm	9.3
Gradeability		Degree (%)	35 (70)	
Ground pressure (380 mm shoe)		kgf/cm ² (psi)	0.33 (4.69)	
Max traction force		kg (lb)	5300 (11680)	