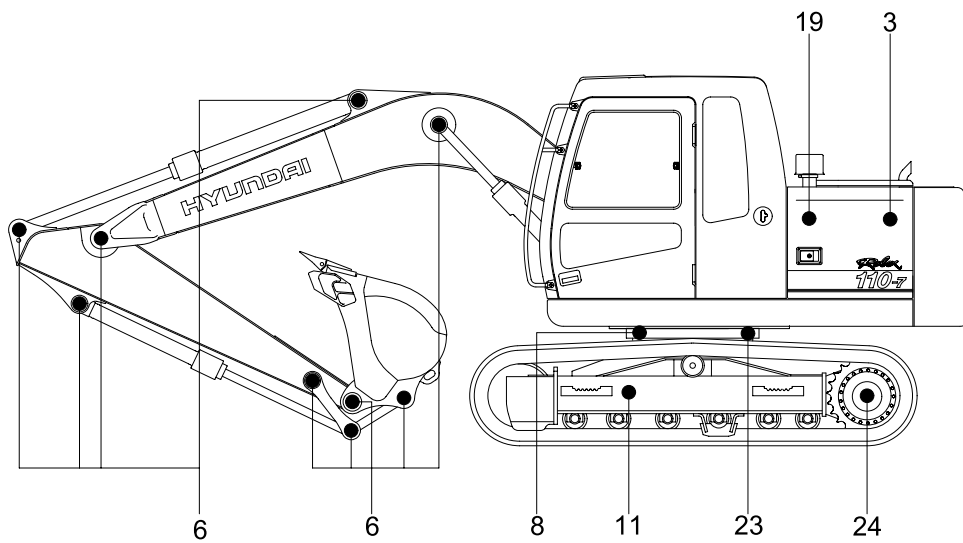
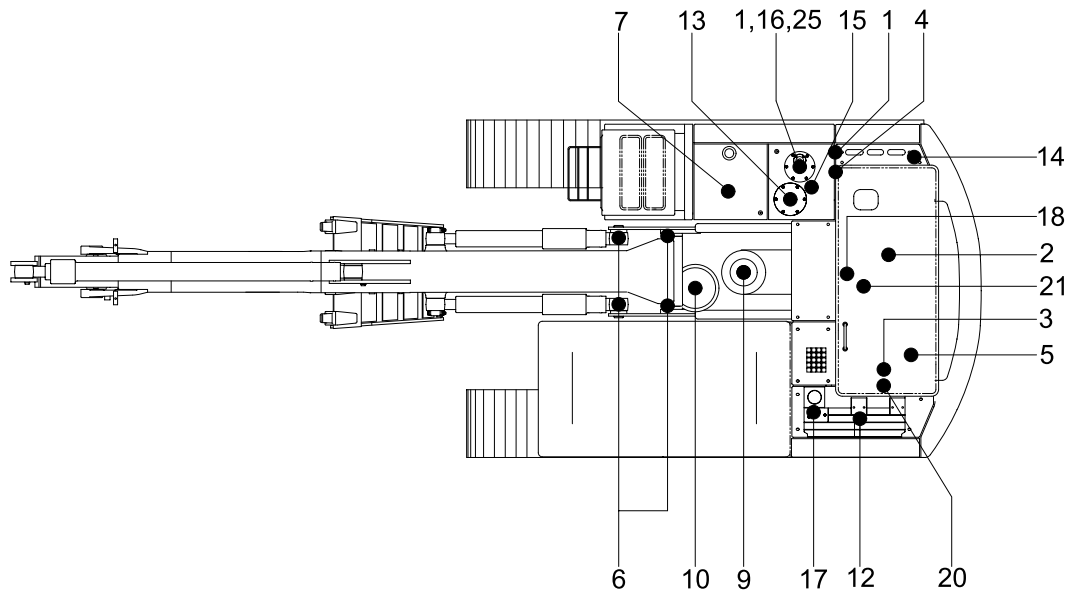


## 5. MAINTENANCE CHART



11076MI25

### Caution

1. Service intervals are based on the hour meter reading.
2. The number of each item shows the lubrication point on the machine.
3. Stop engine while filling oil, and use no open flames.
4. For other details, refer to the service manual.

Service interval	No.	Description	Service action	Oil symbol	Capacity l (U.S.gal)	Service points No.
10 Hours or daily	1	Hydraulic oil level	Check, Add	HO	100(26.4)	1
	2	Engine oil level	Check, Add	EO	17.5(4.6)	1
	3	Radiator coolant	Check, Add	C	20(5.2)	1
	4	Water separator	Check, Drain	-	-	1
	5	Fan belt tension and damage	Check, Adjust	-	-	1
50 Hours or weekly	6	Attachment pins	Check, Add	PGL	-	17
	7	Fuel tank(water, sediment)	Check, Clean	-	-	1
	8	Swing bearing grease	Check, Add	PGL	-	3
	9	Swing drive gear case	Check, Add	GO	2.5(0.7)	1
	10	Swing drive gear grease	Check, Add	PGL	0.35(0.09)	1
	11	Track tension	Check, Adjust	-	-	2
250 Hours	12	Battery(Electrolyte, voltage)	Check, Add	-	-	2
	13	Hydraulic oil return filter	Replace	-	-	1
	14	Line filter element	Replace	-	-	1
	15	Drain filter cartridge	Replace	-	-	1
	16	Air breather element	Replace	-	-	1
	17	Air con & Heater outer filter	Check, Clean	-	-	1
500 Hours	2	Engine oil	Change	EO	17.5(4.6)	1
	18	Engine oil filter	Replace	-	-	1
	19	Air cleaner element(Primary)	Clean	-	-	1
	20	Radiator and oil cooler	Check, Clean	-	-	2
	21	Fuel filter element	Replace	-	-	1
1000 Hours	9	Swing drive gear case	Change	GO	2.5(0.7)	1
	23	Swing gear and pinion	Change	PGL	4.4(1.2)	2
	24	Final drive gear case	Change	GO	2.5(0.7)	1
2000 Hours	1	Hydraulic oil level	Change	HO	100(26.4)	1
	3	Radiator coolant	Change	C	20(5.2)	1
	25	Hydraulic oil suction strainer	Check, Clean	-	-	1
As required	17	Air conditioner & heater fresh air filter	Replace	-	-	1
		Air conditioner & heater recirculation filter	Clean, Replace	-	-	1
	19	Air cleaner element(Primary, safety)	Check, Replace	-	-	2

※ **Oil symbol**

Please refer to the recommended lubricants for specification.

DF : Diesel fuel                      GO : Gear oil  
HO : Hydraulic oil                    C : Coolant  
PGL : Grease                            EO : Engine oil