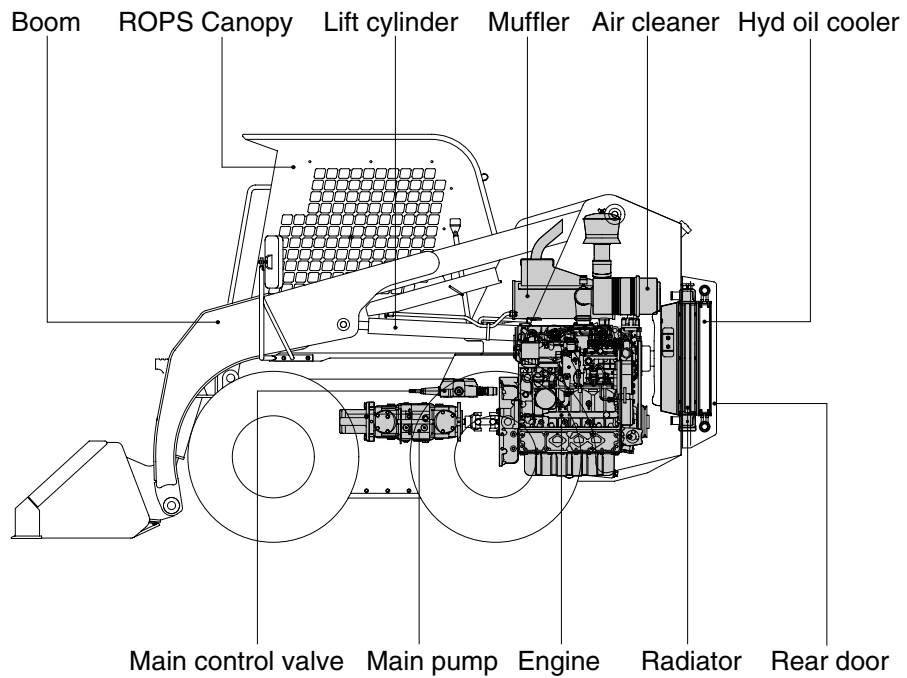
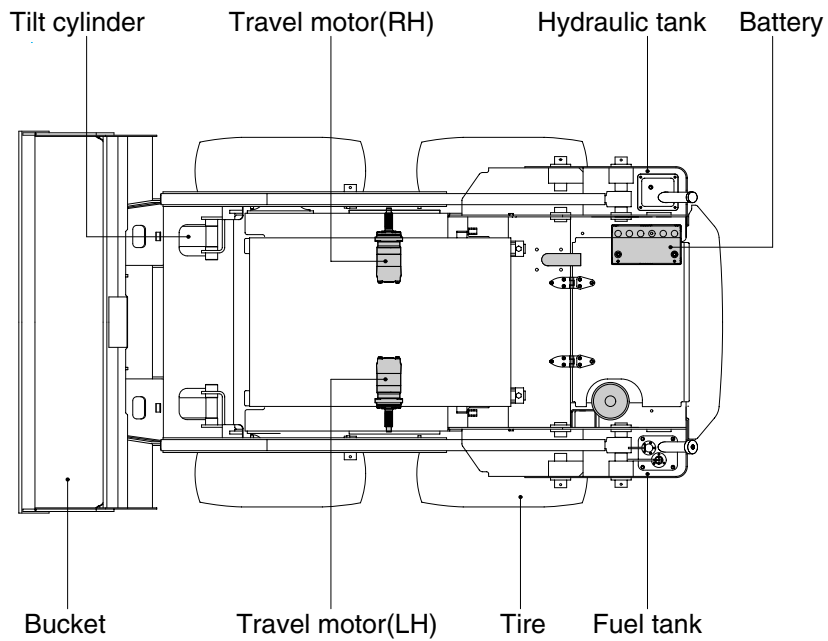


2. SPECIFICATIONS

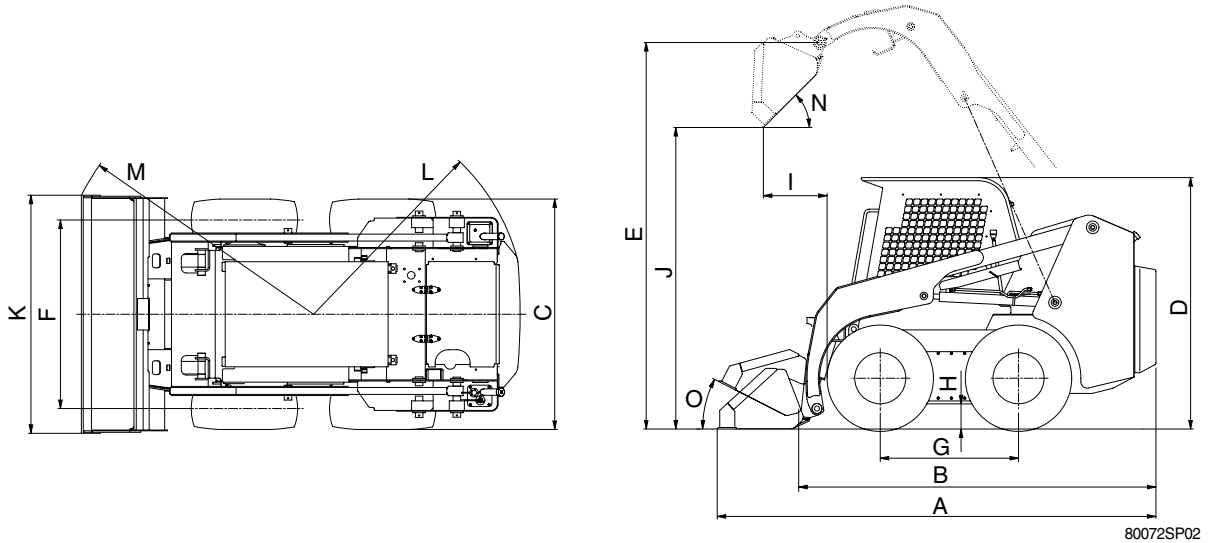
1. MAJOR COMPONENT



80072SP01

2. SPECIFICATIONS

· WITH STANDARD BUCKET AND CANOPY



Description		Unit	Specification	
Operating weight		kg(lb)	3290(7250)	
Bucket capacity	Struck	m ³ (yd ³)	0.29(0.38)	
	Heaped		0.37(0.48)	
Overall length	A	mm(ft-in)	3470(11' 5")	
Overall length(Less bucket)	B		2840(9' 4")	
Overall width(Except bucket)	C		1830(6' 0")	
Overall height	D		2000(6' 7")	
Overall height(To hinge pin)	E		3080(10' 1")	
Tread	F		1500(4' 11")	
Wheelbase	G		1100(3' 7")	
Ground clearance	H		205(8.1 ")	
Dump reach	I		510(1' 10")	
Dump height	J		2410(7' 11")	
Width bucket	K		1894(6' 3")	
Clearance circle(Rear)	L		1660(5' 5")	
Clearance circle(Front / bucket)	M		2055(6' 9")	
Dump angle	N		Degree(°)	45
Roll back angle(Carry position)	O			27
Cycle time	Boom	Up	sec	4.1
		Down		2.5
	Tilt	Dump		2.8
		Roll back		2.0
Maximum travel speed		km/hr(mph)	11.6(7.2)	
Minimum turning radius(Without bucket)		mm(ft-in)	1350(4' 5")	
Gradeability		Degree(°)	20	

3. WEIGHT

Item	HSL850-7	
	kg	lb
Frame assembly	1050	2310
Canopy	128	282
Engine assembly	246	542
Main pump assembly	65	143
Main control valve	29	64
Travel motor	48	106
Boom	380	838
Bucket	190	419
Tire(12 × 16.5-12PR) with rim	59	130
Boom cylinder	24	53
Bucket cylinder	18	40
Seat	10	22
Battery	20	44

4. SPECIFICATIONS FOR MAJOR COMPONENTS

1) ENGINE

Item	Specification
Model	Kubota V3300DI
Type	4-cycle diesel engine
Cooling method	Water cooling
Number of cylinders and arrangement	4 cylinders, in-line
Combustion chamber type	Direct injection type
Cylinder bore × stroke	98 × 110mm
Piston displacement	3318cc
Compression ratio	20 : 1
Rated gross horse power	68ps at 2400rpm
Maximum gross torque	24kgf · m at 1400rpm
Engine oil quantity	13.2 l
Dry weight	246kg
High idling speed	2600 ± 50rpm
Low idling speed	1050 ± 25rpm
Rated fuel consumption	178g/Ps · hr
Starting motor	12V-2.5kW
Alternator	12V-60AMP
Battery	1 × 12V × 90Ah

2) MAIN PUMP ASSY

Item	Specification	
	Main pump	Auxiliary pump
Type	Axial tandem piston pump	Fixed gear pump
Capacity	2 × 46cc/rev	28cc/rev
Maximum operation pressure	250kg/cm ² (3560psi)	220kg/cm ² (3130psi)
Rated speed	2400rpm	2400rpm

3) MAIN CONTROL VALVE

Item	Specification
Type	3 spool(Mono block)
Main relief valve pressure	175kgf/cm ² (2490psi)

4) TRAVEL MOTOR

Item	Specification
Type	Fixed gear motor
Capacity	523.6cc/rev

5) CYLINDER

Item	Specification
Boom cylinder	Bore dia × Rod dia × Stroke ø 63 × ø 40 × 746mm
Bucket cylinder	Bore dia × Rod dia × Stroke ø 75 × ø 40 × 351mm

6) WHEELS

Item	Specification	
Tire	Tubeless type(STD)	12 × 16.5 - 12PR
	Tube type	8.25 × 16 - 16PR
	Solid type	8.25 × 15