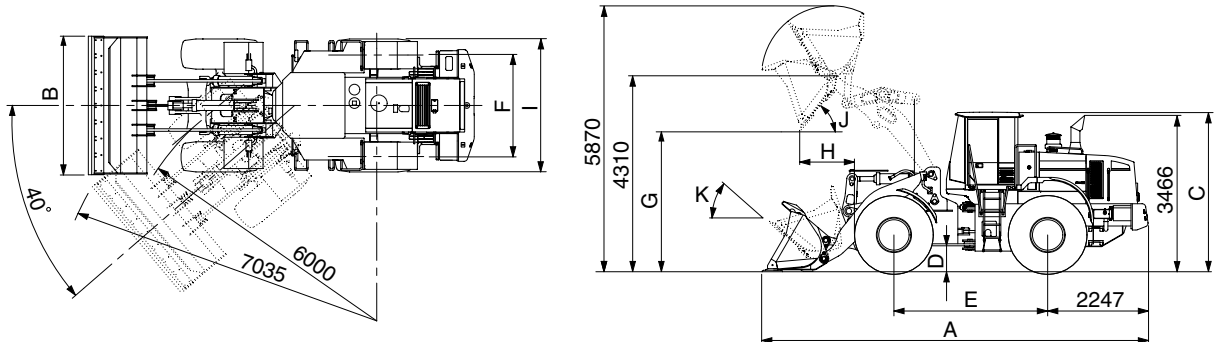


## 2. SPECIFICATIONS

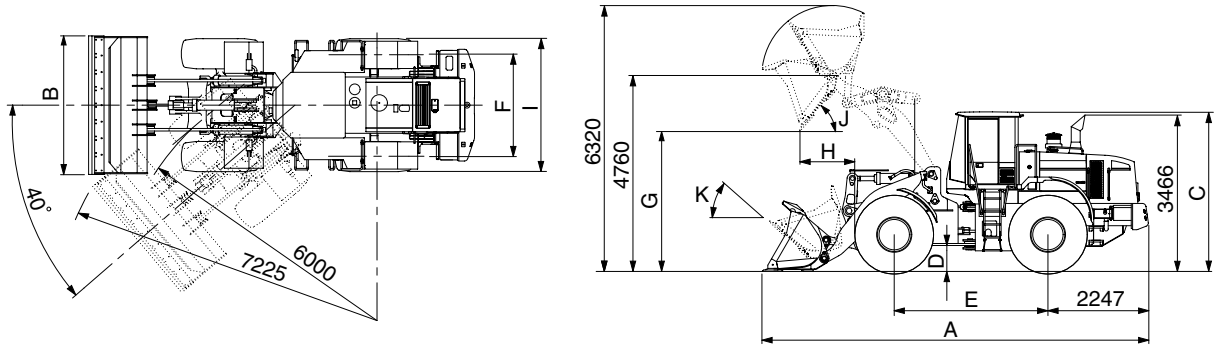
### 1) WITH BOLT-ON CUTTING EDGE TYPE BUCKET(HL770-7A)



7707A2SE03

Description		Unit	Specification	
Operating weight		kg(lb)	23100(50930)	
Bucket capacity	Struck	m <sup>3</sup> (yd <sup>3</sup> )	3.45(4.51)	
	Heaped		4.0(5.2)	
Overall length	A	mm(ft-in)	8635(28' 4")	
Overall width	B		3100(10' 2")	
Overall height	C		3550(11' 8")	
Ground clearance	D		480( 1' 7")	
Wheelbase	E		3440(11' 3")	
Tread	F		2300( 7' 7")	
Dump clearance at 45°	G		3117(10' 3")	
Dump reach(Full lift)	H		1254( 4' 1")	
Width over tires	I		2975( 9' 9")	
Dump angle	J		Degree (°)	48
Roll back angle(Carry position)	K			49
Cycle time	Lift(With load)	sec	5.5	
	Dump(With load)		1.5	
	Lower(Empty)		3.0	
Maximum travel speed		km/hr(mph)	37.2	
Braking distance		m(ft-in)	12(39' 4")	
Minimum turning radius(Center of outside tire)			6(19' 8")	
Gradability		Degree (°)	30	
Travel speed	Forward	km/hr(mph)	First gear	7.4(4.6)
			Second gear	12.2(7.6)
			Third gear	26.0(16.2)
			Fourth gear	37.2(23.2)
	Reverse		First gear	7.4(4.6)
			Second gear	12.2(7.6)
Third gear		26.0(16.2)		

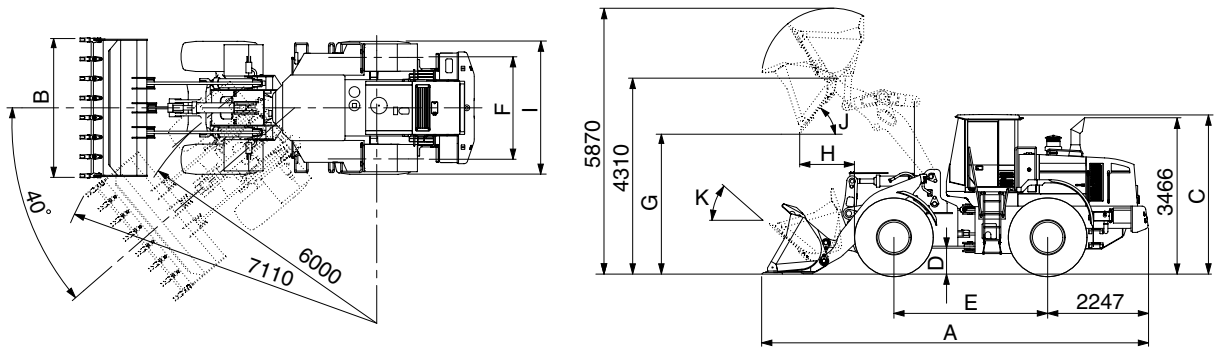
**WITH BOLT-ON CUTTING EDGE TYPE BUCKET(HL770XTD-7A)**



7707A2SE05

Description		Unit	Specification	
Operating weight		kg(lb)	23850(52580)	
Bucket capacity	Struck	m <sup>3</sup> (yd <sup>3</sup> )	3.45(4.51)	
	Heaped		4.0(5.2)	
Overall length	A	mm(ft-in)	9100(29'10")	
Overall width	B		3100(10' 2")	
Overall height	C		3550(11' 8")	
Ground clearance	D		480( 1' 7")	
Wheelbase	E		3440(11' 3")	
Tread	F		2300( 7' 7")	
Dump clearance at 45°	G		3570(11' 9")	
Dump reach(Full lift)	H		1260( 4' 2")	
Width over tires	I		2975( 9' 9")	
Dump angle	J		Degree (°)	48
Roll back angle(Carry position)	K			50
Cycle time	Lift(With load)	sec	5.5	
	Dump(With load)		1.5	
	Lower(Empty)		3.0	
Maximum travel speed		km/hr(mph)	37.2	
Braking distance		m(ft-in)	12(39' 4")	
Minimum turning radius(Center of outside tire)			6(19' 8")	
Gradability		Degree (°)	30	
Travel speed	Forward	km/hr(mph)	First gear	7.4(4.6)
			Second gear	12.2(7.6)
			Third gear	26.0(16.2)
			Fourth gear	37.2(23.2)
	Reverse		First gear	7.4(4.6)
			Second gear	12.2(7.6)
Third gear		26.0(16.2)		

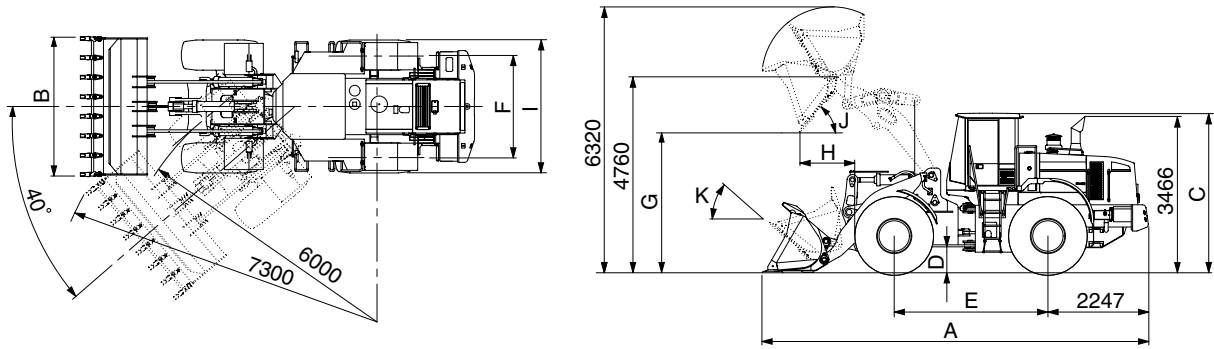
## 2) WITH TOOTH TYPE BUCKET(HL770-7A)



7707A2SE04

Description		Unit	Specification	
Operating weight		kg(lb)	23100(50930)	
Bucket capacity	Struck	m <sup>3</sup> (yd <sup>3</sup> )	3.4(4.5)	
	Heaped		3.9(5.1)	
Overall length	A	mm(ft-in)	8750(28' 9")	
Overall width	B		3150(10' 4")	
Overall height	C		3550(11' 8")	
Ground clearance	D		480( 1' 7")	
Wheelbase	E		3440(11' 3")	
Tread	F		2300( 7' 7")	
Dump clearance at 45°	G		3000( 9' 10")	
Dump reach(Full lift)	H		1340( 4' 5")	
Width over tires	I		2975( 9' 9")	
Dump angle	J		Degree (°)	48
Roll back angle(Carry position)	K			49
Cycle time	Lift(With load)	sec	5.5	
	Dump(With load)		1.5	
	Lower(Empty)		3.0	
Maximum travel speed		km/hr(mph)	37.2	
Braking distance		m(ft-in)	12(39' 4")	
Minimum turning radius(Center of outside tire)			6(19' 8")	
Gradability		Degree (°)	30	
Travel speed	Forward	km/hr(mph)	First gear	7.4(4.6)
			Second gear	12.2(7.6)
			Third gear	26.0(16.2)
			Fourth gear	37.2(23.2)
	Reverse		First gear	7.4(4.6)
			Second gear	12.2(7.6)
Third gear		26.0(16.2)		

**WITH TOOTH TYPE BUCKET(HL770XTD-7A)**



7707A2SE06

Description		Unit	Specification	
Operating weight		kg(lb)	23550(51920)	
Bucket capacity	Struck	m <sup>3</sup> (yd <sup>3</sup> )	3.4(4.5)	
	Heaped		3.9(5.1)	
Overall length	A	mm(ft-in)	9250(30' 4")	
Overall width	B		3150(10' 4")	
Overall height	C		3550(11' 8")	
Ground clearance	D		480( 1' 7")	
Wheelbase	E		3440(11' 3")	
Tread	F		2300( 7' 7")	
Dump clearance at 45°	G		3445(11' 4")	
Dump reach(Full lift)	H		1350( 4' 5")	
Width over tires	I		2975( 9' 9")	
Dump angle	J		Degree (°)	48
Roll back angle(Carry position)	K			50
Cycle time	Lift(With load)	sec	5.5	
	Dump(With load)		1.5	
	Lower(Empty)		3.0	
Maximum travel speed		km/hr(mph)	37.2	
Braking distance		m(ft-in)	12(39' 4")	
Minimum turning radius(Center of outside tire)			6(19' 8")	
Gradability		Degree (°)	30	
Travel speed	Forward	km/hr(mph)	First gear	
			Second gear	
			Third gear	
			Fourth gear	
	Reverse		First gear	
			Second gear	
Third gear				