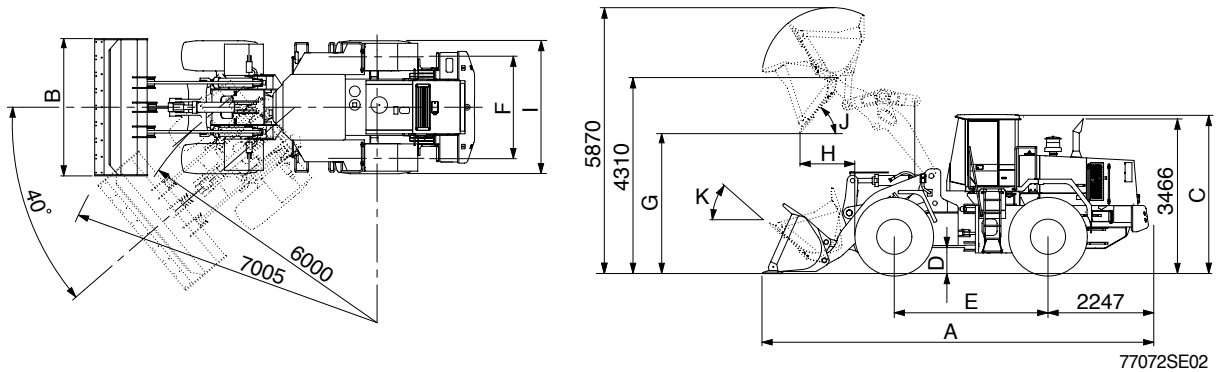


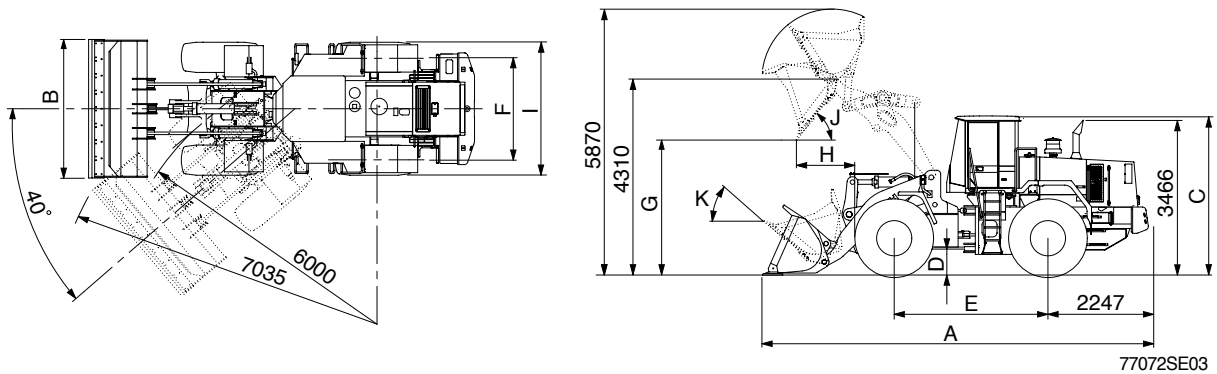
## 2. SPECIFICATIONS

### 1) WITHOUT TOOTH AND CUTTING EDGE TYPE BUCKET



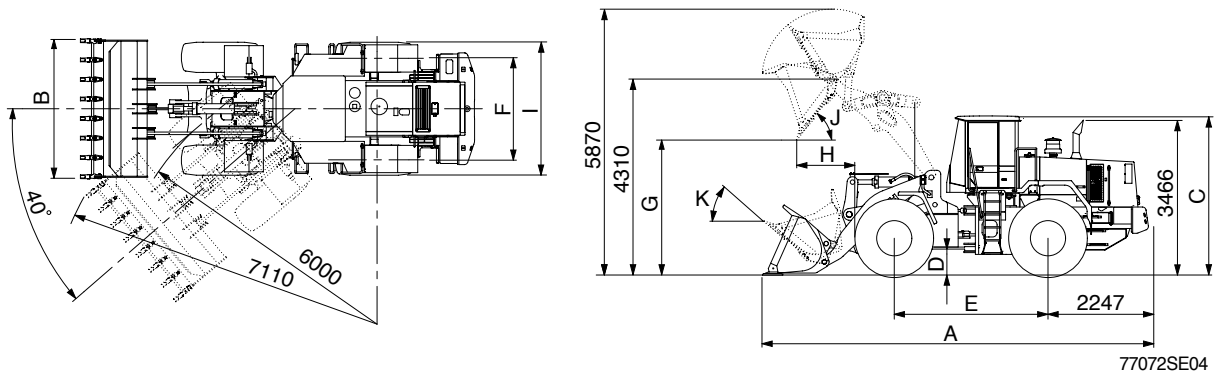
Description		Unit	Specification	
Operating weight		kg(lb)	22800(50270)	
Bucket capacity	Struck	m <sup>3</sup> (yd <sup>3</sup> )	3.4(4.5)	
	Heaped		3.9(5.1)	
Overall length	A	mm(ft-in)	8530(28' 0")	
Overall width	B		3100(10' 2")	
Overall height	C		3550(11' 8")	
Ground clearance	D		480( 1' 7")	
Wheelbase	E		3440(11' 3")	
Tread	F		2300( 7' 7")	
Dump clearance at 45°	G		3194(10' 6")	
Dump reach(Full lift)	H		1226( 4' 0")	
Width over tires	I		2975( 9' 9")	
Dump angle	J		Degree (°)	48
Roll back angle(Carry position)	K			49
Cycle time	Lift(With load)	sec	5.7	
	Dump(With load)		1.4	
	Lower(Empty)		2.8	
Maximum travel speed		km/hr(mph)	38(23.7)	
Braking distance		m(ft-in)	12(39' 4")	
Minimum turning radius(Center of outside tire)			6(19' 8")	
Gradability		Degree (°)	30	
Travel speed	Forward	First gear	7.4(4.6)	
		Second gear	12.3(7.7)	
		Third gear	26.3(16.4)	
		Fourth gear	38.0(23.7)	
	Reverse	First gear	7.4(4.6)	
		Second gear	12.3(7.7)	
Third gear		26.3(16.4)		

## 2) WITH BOLT-ON CUTTING EDGE TYPE BUCKET



Description		Unit	Specification	
Operating weight		kg(lb)	22800(50270)	
Bucket capacity	Struck	m <sup>3</sup> (yd <sup>3</sup> )	3.45(4.51)	
	Heaped		4.0(5.2)	
Overall length	A	mm(ft-in)	8635(28' 4")	
Overall width	B		3100(10' 2")	
Overall height	C		3550(11' 8")	
Ground clearance	D		480( 1' 7")	
Wheelbase	E		3440(11' 3")	
Tread	F		2300( 7' 7")	
Dump clearance at 45°	G		3117(10' 3")	
Dump reach(Full lift)	H		1254( 4' 1")	
Width over tires	I		2975( 9' 9")	
Dump angle	J		Degree (°)	48
Roll back angle(Carry position)	K			49
Cycle time	Lift(With load)	sec	5.7	
	Dump(With load)		1.4	
	Lower(Empty)		2.8	
Maximum travel speed		km/hr(mph)	38(23.7)	
Braking distance		m(ft-in)	12(39' 4")	
Minimum turning radius(Center of outside tire)			6(19' 8")	
Gradability		Degree (°)	30	
Travel speed	Forward	km/hr(mph)	First gear	7.4(4.6)
			Second gear	12.3(7.7)
			Third gear	26.3(16.4)
			Fourth gear	38(23.7)
	Reverse		First gear	7.4(4.6)
			Second gear	12.3(7.7)
Third gear		26.3(16.4)		

### 3) WITH TOOTH TYPE BUCKET



Description		Unit	Specification	
Operating weight		kg(lb)	22800(50270)	
Bucket capacity	Struck	m <sup>3</sup> (yd <sup>3</sup> )	3.4(4.5)	
	Heaped		3.9(5.1)	
Overall length	A	mm(ft-in)	8750(28' 9")	
Overall width	B		3150(10' 4")	
Overall height	C		3550(11' 8")	
Ground clearance	D		480( 1' 7")	
Wheelbase	E		3440(11' 3")	
Tread	F		2300( 7' 7")	
Dump clearance at 45.	G		3000( 9' 10")	
Dump reach(Full lift)	H		1340( 4' 5")	
Width over tires	I		2975( 9' 9")	
Dump angle	J		Degree (.)	48
Roll back angle(Carry position)	K			49
Cycle time	Lift(With load)	sec	5.7	
	Dump(With load)		1.4	
	Lower(Empty)		2.8	
Maximum travel speed		km/hr(mph)	38(23.7)	
Braking distance		m(ft-in)	12(39' 4")	
Minimum turning radius(Center of outside tire)			6(19' 8")	
Gradability		Degree (.)	30	
Travel speed	Forward	km/hr(mph)	First gear	
			Second gear	
			Third gear	
			Fourth gear	
	Reverse		First gear	
			Second gear	
Third gear				