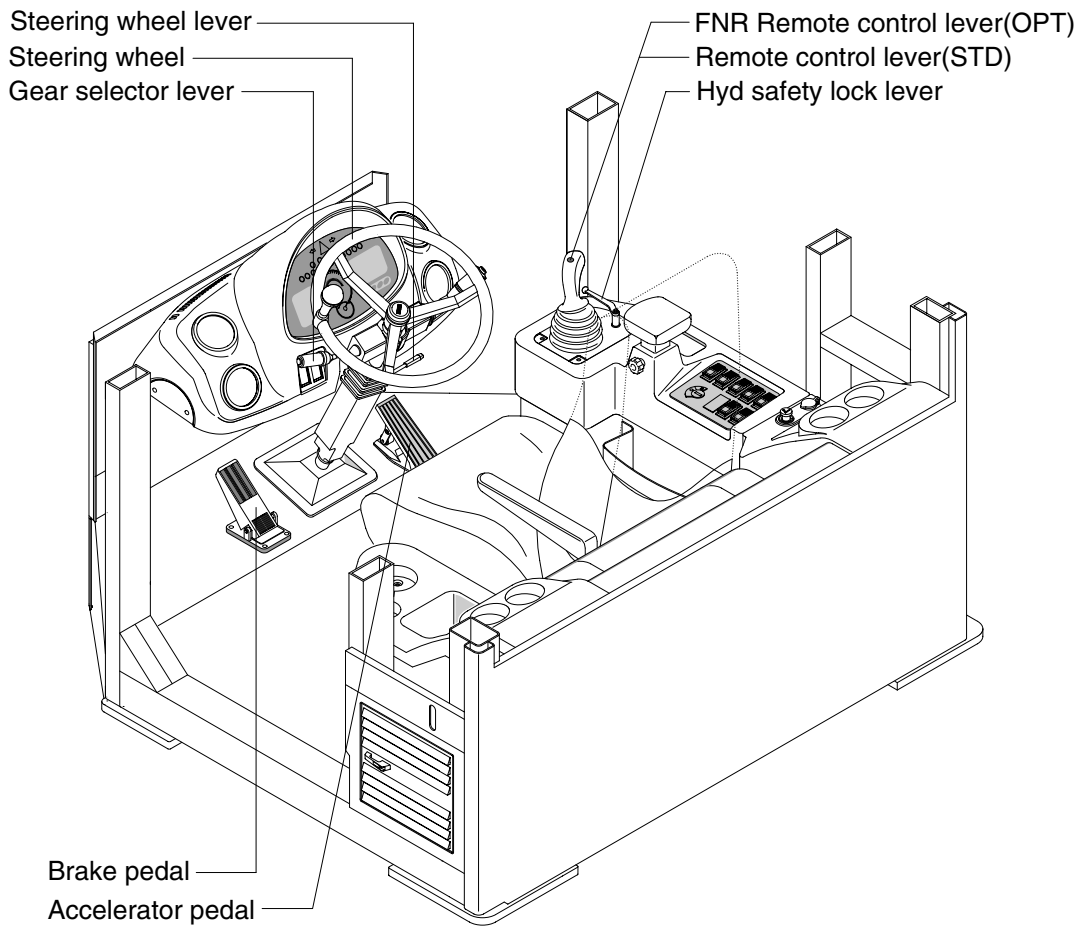
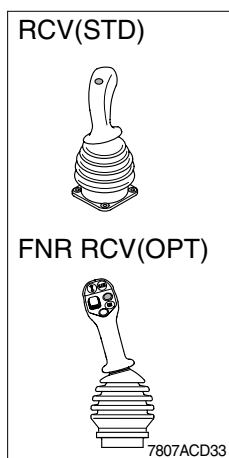


4. CONTROL DEVICE



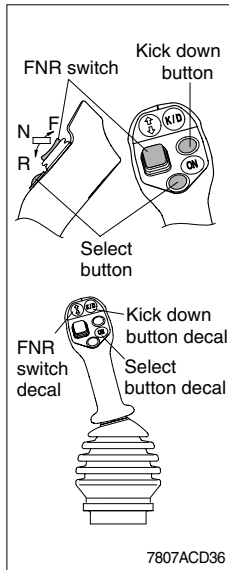
7707A3CD30

1) REMOTE CONTROL LEVER



- (1) These joystick are used to control the boom and the bucket.
- (2) Refer to operation of working device in chapter 4 at page 4-7.

2) FNR REMOTE CONTROL LEVER(OPTION)



(1) This switch is used for forward and backward drive.

※ Gear range can be selected by gear selector lever.

(2) Select button

① If the select button is pressed, the indication lamp on the cluster will be ON and this FNR switch will start to operate.

※ When the engine is running, the machine is on standstill(0 speed), parking brake is released, gear selector lever is in the neutral position, you can use this function after pressing the select button.

(3) FNR switch

- F : Forward drive
- N : Neutral
- R : Reverse drive

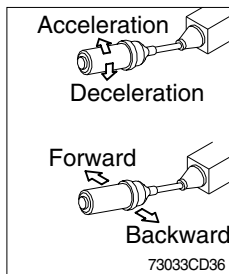
① If the upper side of this switch is pushed, the machine moves forward.

② If the down side of this switch is pushed, the machine moves backward.

③ This function is automatically released when the engine is stopped, parking brake is ON or gear selector lever is out of neutral.

(4) Kick down button : Refer to page 3-18.

3) GEAR SELECTOR LEVER

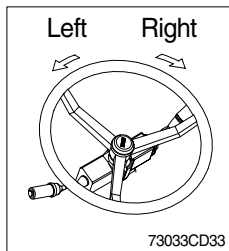


(1) This lever is used for gear selection, forward 4 stages and reverse 3 stages.

(2) If you push the gear selector lever, the machine moves forward, but if you pull the gear selector lever, the machine moves backward.

(3) If you turn the gear selector lever forward, the machine increases the speed, but if you turn the gear selector lever backward, the machine reduces the speed.

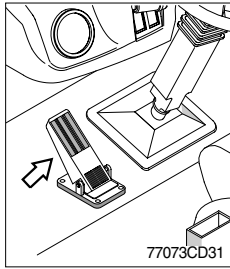
4) STEERING WHEEL



(1) Two multi-motion cylinders in the center of the machine will operate the steering function.

(2) If the steering wheel is turned to left, the machine will move to the left and turn it to the right, the machine will move to the right.

5) BRAKE PEDAL

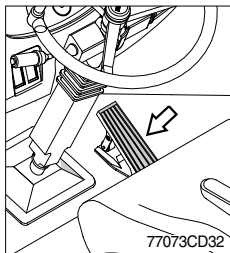


- (1) If the pedal is pushed, this will generate braking force and bring the machine to a stop.
- (2) If the power train operation is to be cut off, set the clutch cut off switch to ON and press the pedal.

▲ Even if the brake is applied while this switch is OFF, power train will not cut off.

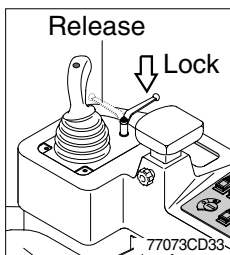
※ Do not operate the machine with foot the brake pedal unnecessarily, or bring premature wear of brake disc.

6) ACCELERATOR PEDAL



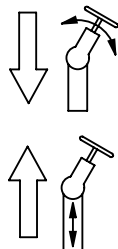
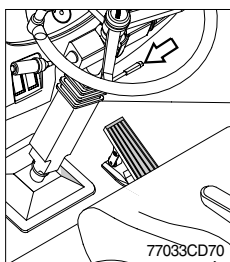
- (1) This pedal controls the engine speed. The engine speed will increase in proportion to the degree of force applied to this pedal.
- (2) Unless this pedal is pressed, the machine will run at low idling.

7) HYDRAULIC SAFETY LOCK LEVER



- (1) When the lever is turned to LOCK position, the hydraulic pilot line will be cut off, so the work equipment will not operate.

8) STEERING WHEEL LEVER



- (1) By pulling down the lever, the wheel is adjustable to tilt.

- (2) By pulling up the lever, the wheel is adjustable to telescope.