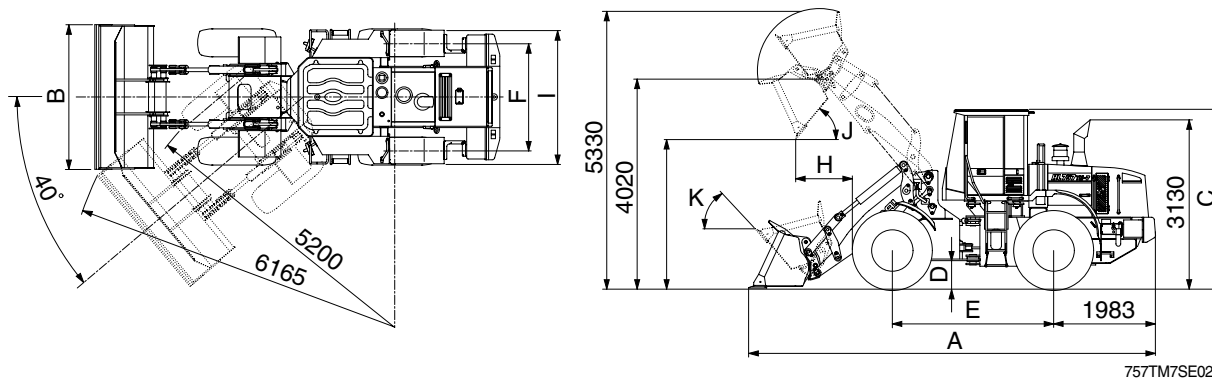


## 2. SPECIFICATIONS

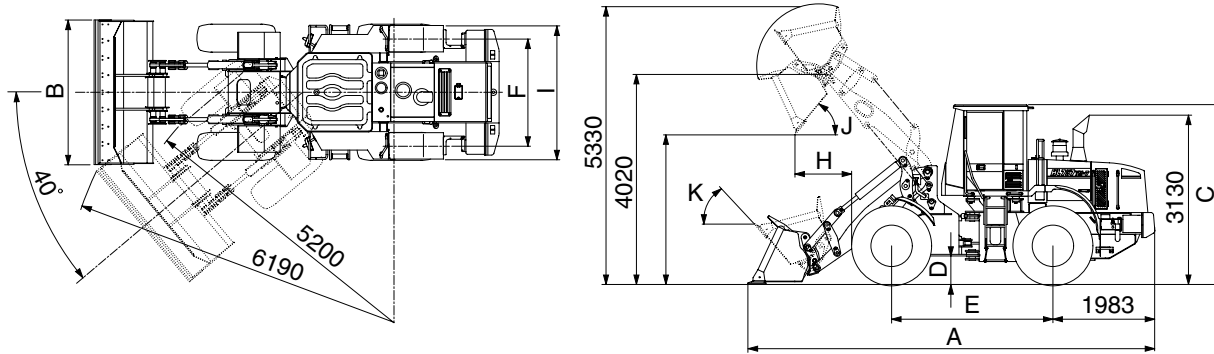
### 1) WITHOUT CUTTING EDGE TYPE BUCKET



757TM7SE02

Description		Unit	Specification	
Operating weight		kg(lb)	14300(31530)	
Bucket capacity	Struck	m <sup>3</sup> (yd <sup>3</sup> )	2.0(2.6)	
	Heaped		2.4(3.1)	
Overall length	A	mm(ft-in)	7580(24'10")	
Overall width	B		2740( 9' 0")	
Overall height	C		3300(10'10")	
Ground clearance	D		410( 1' 4")	
Wheelbase	E		3030( 9'11")	
Tread	F		2050( 6' 9")	
Dump clearance at 45°	G		2960( 9' 9")	
Dump reach(Full lift)	H		1245( 4' 1")	
Width over tires	I		2580( 8' 6")	
Dump angle	J		Degree (°)	50
Roll back angle(Carry position)	K			54
Cycle time	Lift(With load)	sec	5.9	
	Dump(With load)		2.5	
	Lower(Empty)		3.0	
Maximum travel speed		km/hr(mph)	37.0(23.0)	
Braking distance		m(ft-in)	12(39' 4")	
Minimum turning radius(Center of outside tire)			5.2(17' 1")	
Gradability		Degree (°)	30	
Travel speed	Forward	First gear	7.4(4.6)	
		Second gear	12.1(7.5)	
		Third gear	23.7(14.7)	
		Fourth gear	37.0(23.0)	
	Reverse	First gear	7.8(4.9)	
		Second gear	12.8(8.0)	
Third gear		25.0(15.6)		

## 2) WITH BOLT-ON CUTTING EDGE TYPE BUCKET



757TM7SE03

Description		Unit	Specification	
Operating weight		kg(lb)	14300(31530)	
Bucket capacity	Struck	m <sup>3</sup> (yd <sup>3</sup> )	2.1(2.7)	
	Heaped		2.5(3.3)	
Overall length	A	mm(ft-in)	7670(25' 2")	
Overall width	B		2740( 9' 0")	
Overall height	C		3300(10'10")	
Ground clearance	D		410( 1' 4")	
Wheelbase	E		3030( 9'11")	
Tread	F		2050( 6' 9")	
Dump clearance at 45°	G		2900( 9' 6")	
Dump reach(Full lift)	H		1280( 4' 2")	
Width over tires	I		2580( 8' 6")	
Dump angle	J		Degree (°)	50
Roll back angle(Carry position)	K			54
Cycle time	Lift(With load)	sec	5.9	
	Dump(With load)		2.5	
	Lower(Empty)		3.0	
Maximum travel speed		km/hr(mph)	37.0(23.0)	
Braking distance		m(ft-in)	12(39' 4")	
Minimum turning radius(Center of outside tire)			5.2(17' 1")	
Gradability		Degree (°)	30	
Travel speed	Forward	km/hr(mph)	First gear	7.4(4.6)
			Second gear	12.1(7.5)
			Third gear	23.7(14.7)
			Fourth gear	37.0(23.0)
	Reverse		First gear	7.8(4.9)
			Second gear	12.8(8.0)
Third gear		25.0(15.6)		