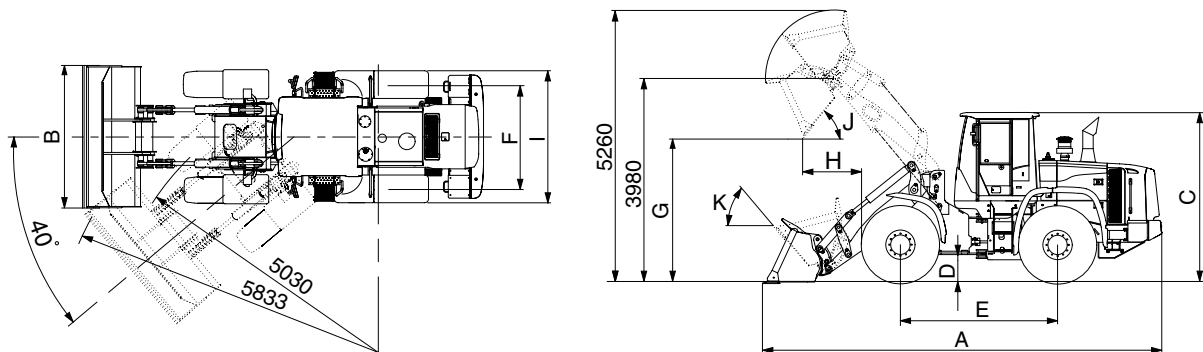


## 2. SPECIFICATIONS

### WITH BOLT-ON CUTTING EDGE TYPE BUCKET



740TM92SP02

| Description                                     |                  | Unit                              | Specification |    |
|---|------------------|-----------------------------------|---------------|----|
| Operating weight                                |                  | kg (lb)                           | 12600 (27780) |    |
| Bucket capacity                                 | Struck           | m <sup>3</sup> (yd <sup>3</sup> ) | 2.0 (2.6)     |    |
|   | Heaped           |                                   | 2.3 (3.0)     |    |
| Overall length                                  | A                | mm (ft-in)                        | 7660 (25' 2") |    |
| Overall width                                   | B                |                                   | 2550 (8' 4")  |    |
| Overall height                                  | C                |                                   | 3260 (10' 8") |    |
| Ground clearance                                | D                |                                   | 417 (1' 4")   |    |
| Wheelbase                                       | E                |                                   | 2900 (9' 6")  |    |
| Tread   | F                |                                   | 1900 (6' 3")  |    |
| Dump clearance at 45°                           | G                |                                   | 2840 (9' 4")  |    |
| Dump reach (full lift)                          | H                |                                   | 1330 (4' 4")  |    |
| Width over tires                                | I                |                                   | 2430 (8' 0")  |    |
| Dump angle                                      | J                |                                   | degree (°)    | 50 |
| Roll back angle (carry position)                | K                |                                   |               | 54 |
| Cycle time                                      | Lift (with load) | sec                               | 5.5           |    |
|   | Dump (with load) |                                   | 1.6           |    |
|   | Lower (empty)    |                                   | 3.0           |    |
| Maximum travel speed                            |                  | km/hr (mph)                       | 39.0 (24.3)   |    |
| Braking distance                                |                  | m (ft-in)                         | 12 (39' 4")   |    |
| Minimum turning radius (center of outside tire) |                  |                                   | 5.03 (16' 6") |    |
| Gradeability                                    |                  | degree (°)                        | 30            |    |
| Travel speed                                    | Forward          | First gear                        | 6.7 (4.2)     |    |
|   |                  | Second gear                       | 12.2 (7.6)    |    |
|   |                  | Third gear                        | 23.8 (14.8)   |    |
|   |                  | Fourth gear                       | 39.0 (24.3)   |    |
|   | Reverse          | First gear                        | 7.1 (4.4)     |    |
|   |                  | Second gear                       | 12.9 (8.0)    |    |
| Third gear                                      |                  | 25.1 (15.6)                       |               |    |