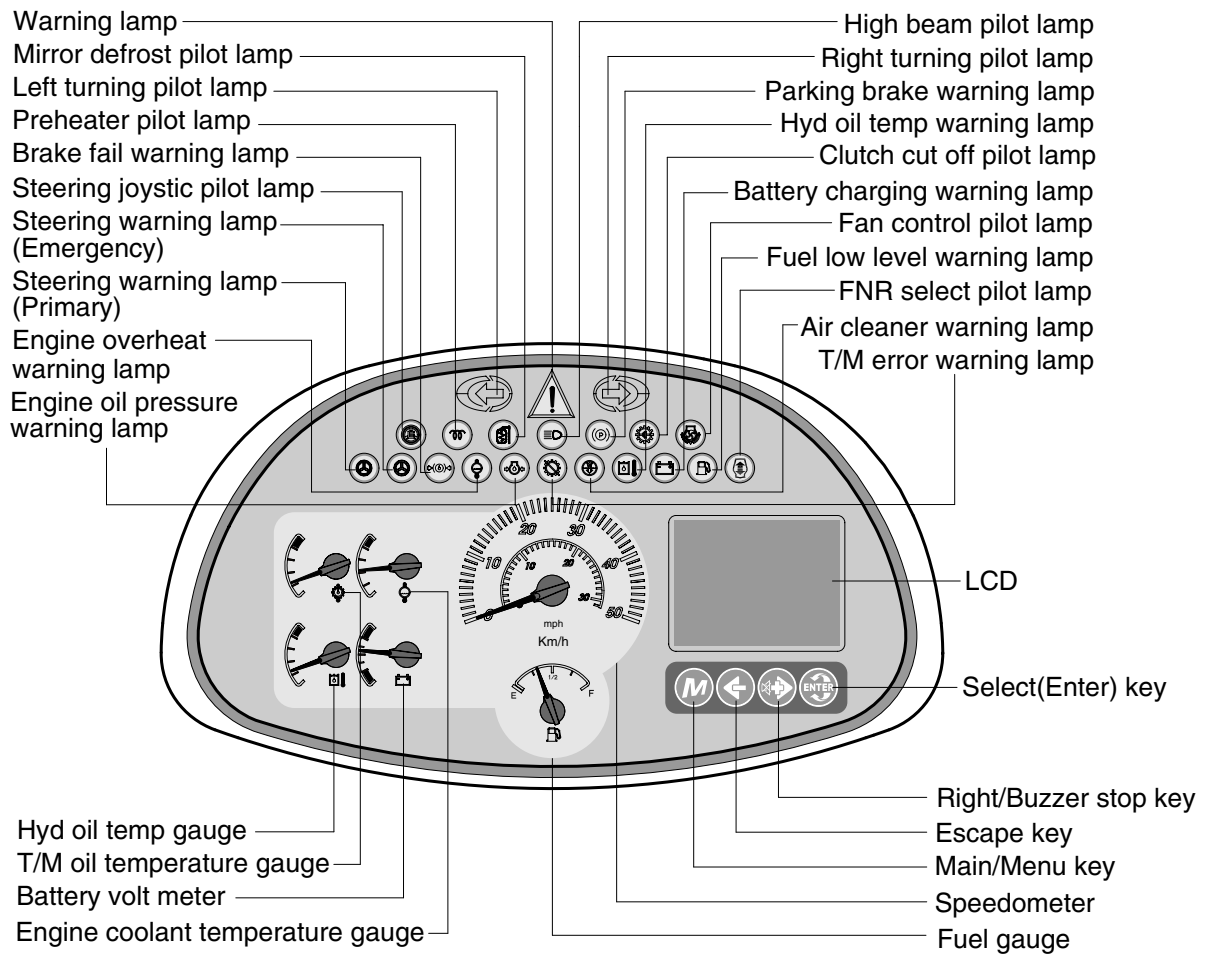


2. CLUSTER

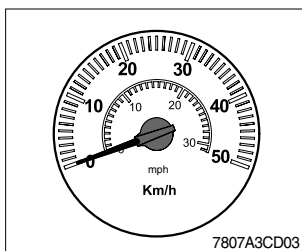
The gauges panel consists of gauges and monitors as shown below, to warn the operator in case of abnormal machine operation or conditions for the appropriate operation and inspection.

- Gauges : Indicate operating status of the machine.
- Warning lamp : Indicate abnormality of the machine.
- Pilot lamp : Indicate operating status of the machine.
- ※ **The monitor installed on this machine does not entirely guarantee the condition of the machine. Daily inspection should be performed according to chapter 6, MAINTENANCE.**
- ※ **When the monitor provides a warning immediately check the problem, and perform the required action.**



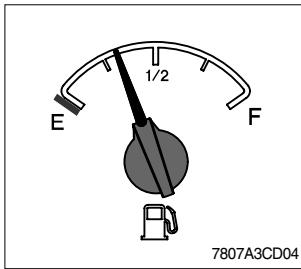
7707A3CD02

1) SPEEDOMETER



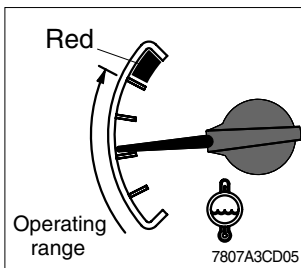
- (1) The speedometer displays the speed of machine in mph and km/h.

2) FUEL GAUGE



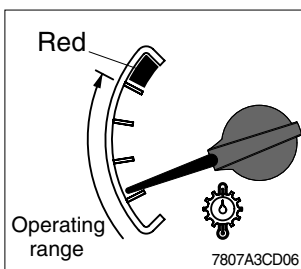
- (1) This gauge indicates the amount of fuel in the fuel tank.
 - (2) Fill the fuel when the indicator moves **E** point, refuel as soon as possible to avoid running out of fuel.
- ※ **If the gauge indicates below E point even though the machine is on the normal condition, check the electric device as that can be caused by the poor connection of electricity or sensor.**

3) ENGINE COOLANT TEMPERATURE GAUGE



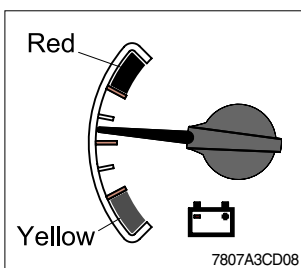
- (1) This indicates the temperature of coolant.
 - Red range : Above 104°C (219°F)
- (2) Keep idling engine at low speed until the indicator is in the operating range.
- (3) If the indicator is in the red range, turn OFF the engine, check the radiator and engine.

4) TRANSMISSION OIL TEMPERATURE GAUGE



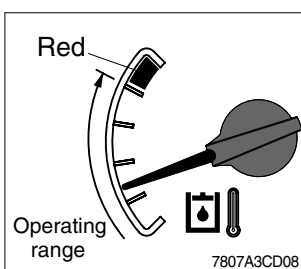
- (1) This range indicates the temperature of transmission oil.
 - Red range : Above 107°C (225°F)
- (2) Keep idling engine at low speed until the indicator is in the operating range.
- (3) If the indicator is in the red range, it means the transmission is overheated. Be careful that the indicator does not move into the red range.

5) BATTERY VOLT METER



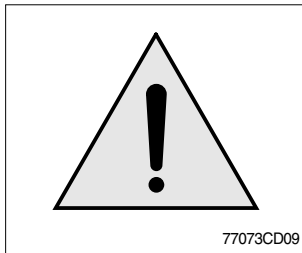
- (1) This gauge indicates the voltage in the charging system when the engine is running.
- (2) If the indicator is below 24V (Yellow range), it means that the electricity is being discharged. If the indicator is above 30V (Red range), an unusually high voltage may damage the alternator. Check the charging system in both cases.

6) HYD OIL TEMPERATURE GAUGE



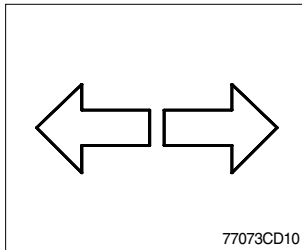
- (1) This range indicates the temperature of hydraulic oil.
 - Red range : Above 105°C (221°F)
- (2) Keep idling engine at low speed until the indicator is in the operating range.
- (3) If the indicator is in the red range, reduce the load on the system. If the gauge stays in the red range, stop the machine and check the cause of the problem.

7) WARNING LAMP



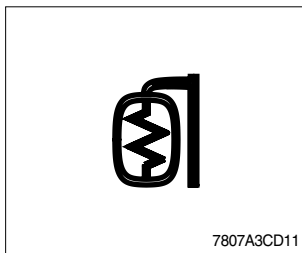
- (1) When all warning lamp or fault codes are being displayed, this warning lamp will flash.
- (2) When this warning lamp flashes, machine must be checked or serviced as soon as possible.

8) DIRECTION PILOT LAMP



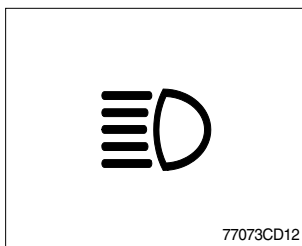
- (1) This lamp flashes when the signal indicator lever is moved.

9) MIRROR DEFROST PILOT LAMP (Option)



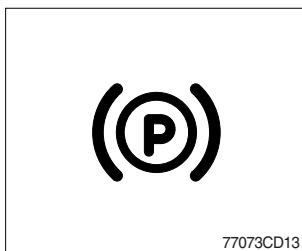
- (1) This lamp comes ON when mirror defrost switch is pressed.

10) HIGH BEAM PILOT LAMP



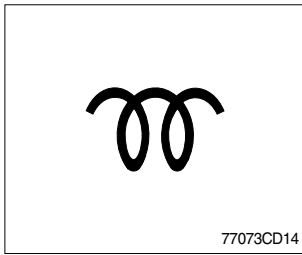
- (1) This lamp works when the illuminating direction is upward.
- (2) This lamp comes ON when the dimmer switch is operated, e.g., when passing another vehicle.

11) PARKING BRAKE WARNING LAMP



- (1) When the parking brake is actuated, the lamp lights ON.
※ Check the lamp is OFF before driving.

12) PREHEATER PILOT LAMP

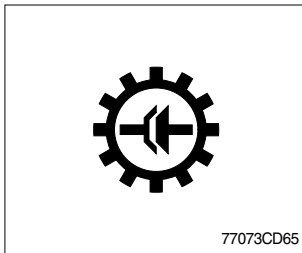


(1) This lamp lights ON when start switch is turned clockwise to the ON position. Light will turn off after approximately 5~45 seconds, depending on engine temperature, indicating that preheating is completed.

(2) When the lamp goes out the operator should start cranking the engine.

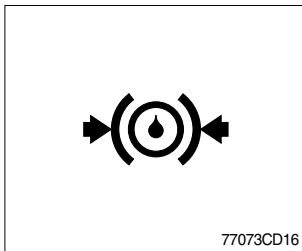
※ Refer to page 4-4.

13) CLUTCH CUT OFF PILOT LAMP



(1) When the clutch cut off switch is pressed, the lamp lights ON.

14) BRAKE FAIL WARNING LAMP

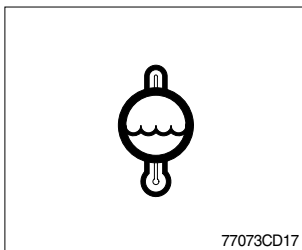


(1) The lamp lights ON when the oil pressure of service brake drops below the normal range.

(2) When the lamp is ON, stop the engine and check for its cause.

※ Do not operate until any problems are corrected.

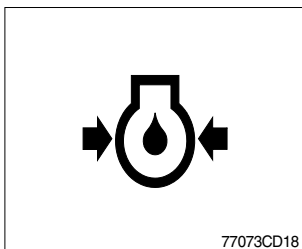
15) ENGINE OVERHEAT WARNING LAMP



(1) This lamp is turned ON when the temperature of cooling water is over the normal temperature(104°C, 219°F).

(2) Check the cooling system when the lamp is ON.

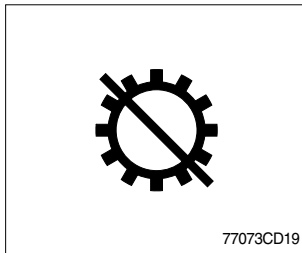
16) ENGINE OIL PRESSURE WARNING LAMP



(1) This lamp is comes ON after starting the engine because of the low engine oil pressure.

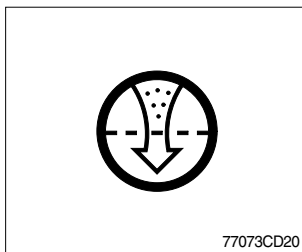
(2) If the lamp comes ON during engine operation, shut OFF engine immediately. Check engine oil level.

17) TRANSMISSION ERROR WARNING LAMP



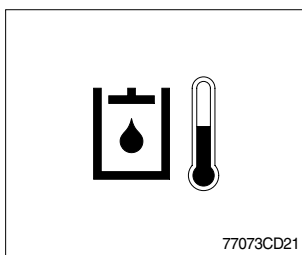
- (1) This lamp lights ON and the LCD display show the error codes when an error occurs in the transmission.
 - (2) Immediately pull the machine to a convenient stop. Stop the engine. Investigate the cause.
- ※ **Consult a HYUNDAI dealer to investigate the cause.**
 - ※ **Do not operate until the cause has been corrected.**

18) AIR CLEANER WARNING LAMP



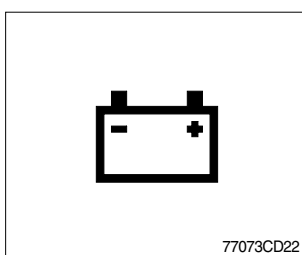
- (1) This lamp operates by the vacuum caused inside when the filter of air cleaner is clogged.
- (2) Check the filter and clean or replace it when the lamp is ON.

19) HYD OIL TEMPERATURE WARNING LAMP



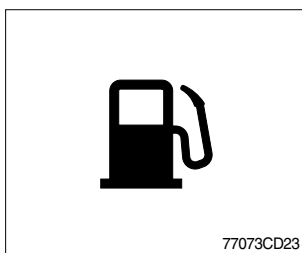
- (1) This warning lamp operates and the buzzer sounds when the temperature of hydraulic oil is over 105°C(221°F).
- (2) Check the hydraulic oil level when the lamp is turned ON.
- (3) Check for debris between oil cooler and radiator.

20) BATTERY CHARGING WARNING LAMP



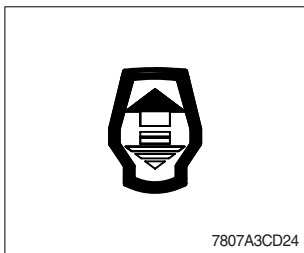
- (1) This lamp is ON when key ON, it is turned OFF after starting the engine.
- (2) Check the battery charging circuit when this lamp comes ON, during engine operation.

21) FUEL LOW LEVEL WARNING LAMP



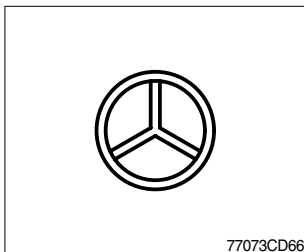
- (1) Fill the fuel immediately when the lamp is turned ON.

22) FNR SELECT PILOT LAMP(Option)



- (1) The lamp comes ON when FNR select button on the optional FNR remote control lever is pressed.
- ※ Refer to page 3-22.

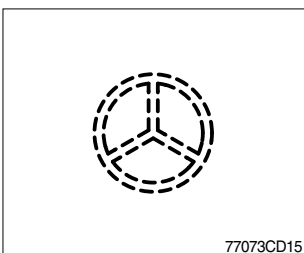
23) STEERING WARNING LAMP(Option)



(1) Primary

If the oil pressure in the steering pump drops, the lamp will light up. If this lamp flashes during operation, the action alarm should sound.

- ※ If the lamp lights up, immediately pull the machine to a safe place and stop the machine.

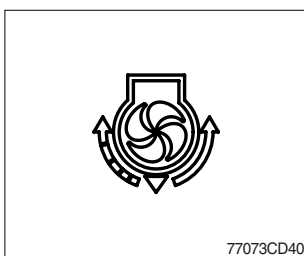


(2) Emergency

This lamp will flash if the oil pressure in the emergency steering pump drops. The lamp notifies the operator that if the steering system also failed at this time, there is no emergency steering system for backup.

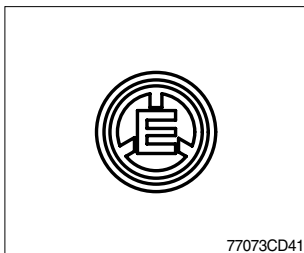
- ※ Immediately pull the machine to a convenient stop and stop the engine.
- ※ This machine is equipped with ground driven emergency steering pump. It is normal for the lamp to flash after 5 seconds when the machine is stopped.

24) FAN CONTROL PILOT LAMP(Option)



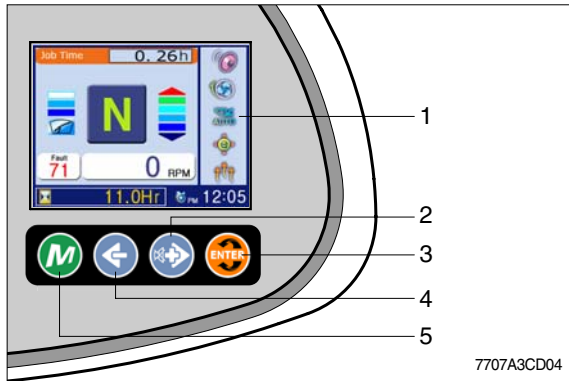
- (1) This lamp lights ON when cooling fan is selected to reverse mode.
- ※ Refer to page 3-9.

25) STEERING JOYSTIC PILOT LAMP(Option)



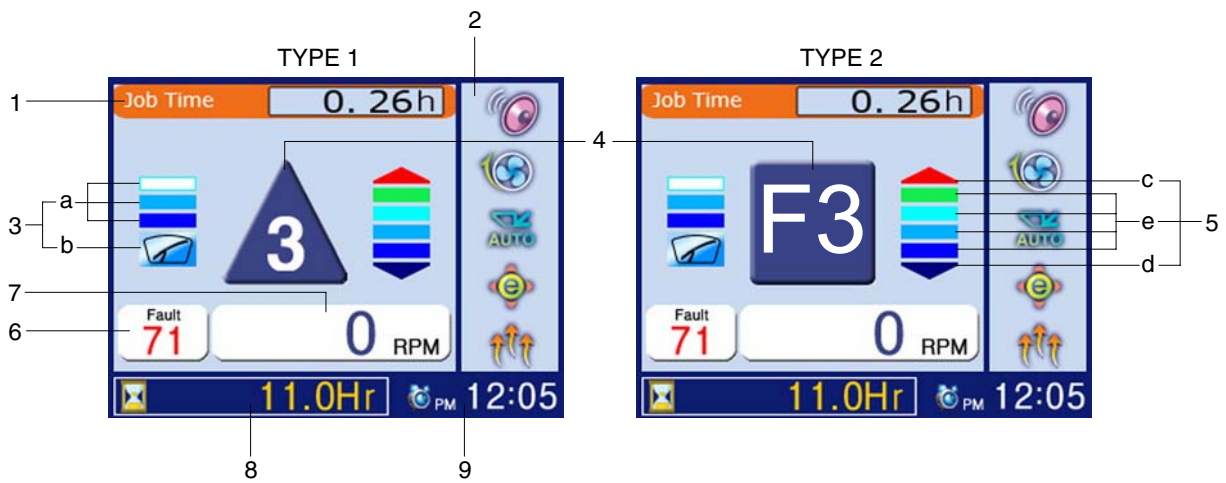
- (1) This lamp lights ON when steering joystic is operated.

26) LCD



- 1 LCD
- 2 Right, Buzzer stop
Move to the next selection
- 3 Select(Enter)
Activate the currently chosen item
- 4 Escape
Return to the previous menu
- 5 Main, Menu
- Display menu
- Return to the main display

(1) Main display

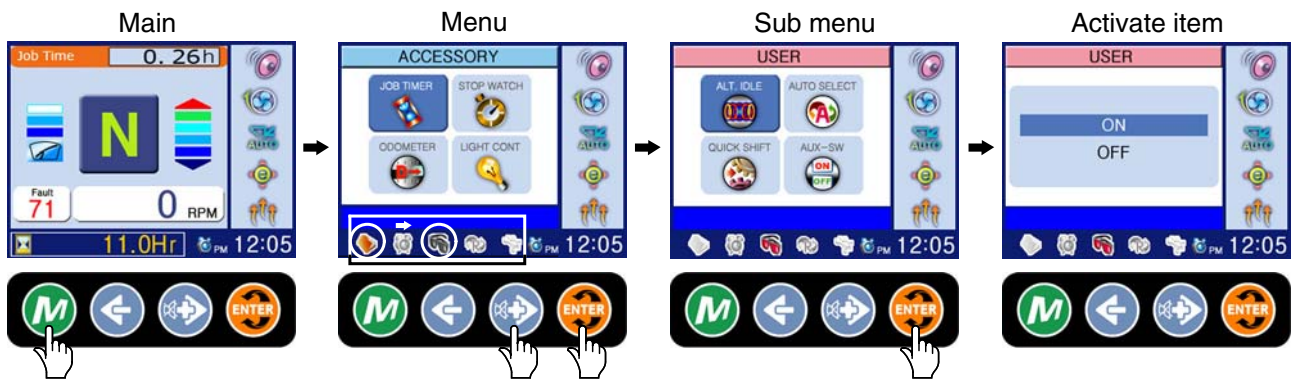


7707A3CD10




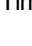






| No | Symbol | Meaning | Remark |
|----|------------|------------------------|--|
| 1 | | Monitoring information | Job timer, Odometer, Hydraulic temperature, Battery voltage, Coolant temperature, T/M oil temperature. |
| 2 | | State information | Buzzer, Fan state, Ride state(option), Steering joystick(option), Warming up |
| 3 | a b | Wiper display | When operating intermittently, it shows an operating time interval Wiper motor intermittently operating |
| 4 | | Actual gear display | Forward, reverse, neutral |
| | F, R, N | | LCD type 1 |
| | 1, 2, 3, 4 | | LCD type 2 |
| | P | | Actual gear |
| 5 | c, d | Select gear display | Up and down shifting c: Forward, d: Reverse |
| | e | | Pre-selected gear |
| 6 | | Fault code display | Fault code state display |
| 7 | | Engine rpm display | Now engine rpm state display |
| 8 | | Hour meter display | Hour meter state display |
| 9 | | Timer & alarm display | Now time & alarm state display |

※ Both type1 and type2 are LCD modes and they can be changed each other by operator's selection.
(Adjustment/Display, see page 3-10)











(2) Display map



7707A3CD11

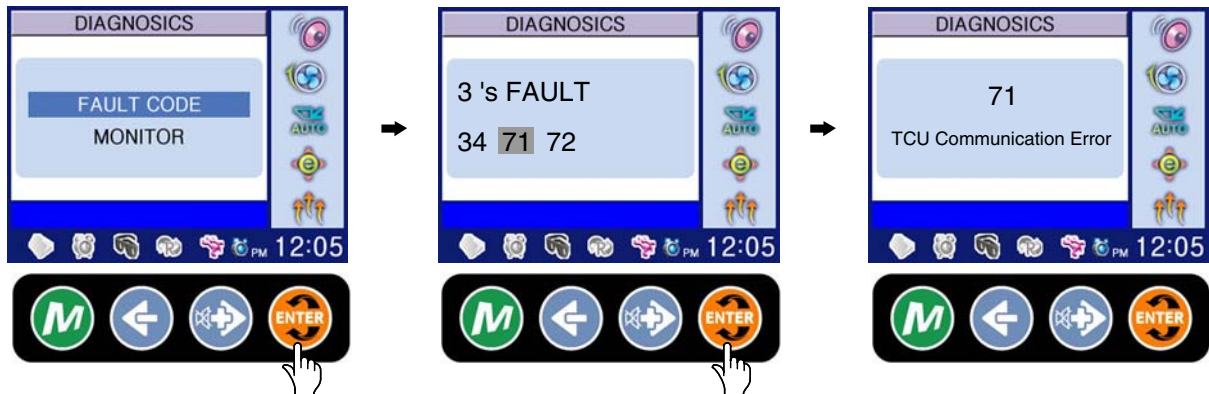
| Main group | Sub group | Meaning | Display on LCD | |
|--|----------------|--|---|---|
| Accessory  | Job timer | <ul style="list-style-type: none"> Measure the various job time. Press ENTER : Display ON, OFF or RESET | Job Time <input type="text" value="1.26h"/> | |
| | Stop watch | <ul style="list-style-type: none"> Measures time in seconds. Press ENTER : Start. Press ENTER again : Stop. | - | |
| | Odometer | Latest | Distance until recent times. | Latest <input type="text" value="20.5 Km"/> |
| | | Total | Total distance. | Total <input type="text" value="30.5 Km"/> |
| | Light control | <ul style="list-style-type: none"> Control of LCD display luminosity. Brightness control :  | - | |
| Clock  | Time set | <ul style="list-style-type: none"> When 12H or 24H is selected, the current hour appears.  : input, ENTER : setting. | PM 22:05 | |
| | Clock ON/OFF | <ul style="list-style-type: none"> ENTER : Clock display ON or OFF. | | |
| | Alarm | 1 | <ul style="list-style-type: none"> Alarm setting. It is possible to set 3 alarms. Stop alarming :  |  |
| | | 2 | | |
| 3 | | | | |
| User  | Alternate idle | ON | <ul style="list-style-type: none"> Raise the idle rpm to 1200rpm automatically to warm up the engine. | - |
| | | OFF | | |
| | Auto select | Mode 1 (1st-4th) | Automatic travelling speed is applied from 1st to 4th gear. | - |
| | | Mode 2 (2nd-4th) | Automatic travelling speed is applied from 2nd to 4th gear. | - |
| | Quick shift | Mode 1 (Down/Up) | Press button once : Shift down, press button again ; shift up. | - |
| | | Mode 2 (Down only) | Press button every time : Shift to lower gear respectively. | - |
| | Aux-sw | Auto select | <ul style="list-style-type: none"> ON : Transmission auto condition. OFF : Transmission semi-auto condition. |  |
| | | Clutch cut-off | <ul style="list-style-type: none"> ON : Clutch cut-off is activated. OFF : Clutch cut-off is cancelled. | - |
| Fan control | Forward | Forward active |  | |
| | Reverse | Reverse active* |  | |

★Reverse mode cleans out quickly dirt and dust on radiator and cooler by reverse rotation of cooling fan.

| Main group | Sub group | | Meaning | Display on LCD |
|--|---------------------|--|---|---|
| Adjustment  | Unit | MKS | · Choose between metric and inch unit display. | Total 50.7 Km |
| | | ENG | | Total 31.5 Mile |
| | Wiper Intermittence | | · When using the intermittent function of wiper motor, it regulates operation time. |  |
| | Alternate RPM | | · Regulate idle rpm. · Press  : Adjust idle rpm increments (or decrement) by 25rpm. | - |
| | Pulse | | · Press  : Modification. | - |
| | AEB | | · It controls the disk interval of the transmission, automatically. | ST |
| | Model | | · It is set at the factory, so there's no need to change. | - |
| | ENG/KOR | | · English : Display in English. · Korean : Display in Korean. | - |
| Display 1/2 | | · Type 1 : Indicate with the symbol. · Type 2 : Indicate with a letter. |  ,  | |
| Diagnostics  | Machine | Fault code | · Error code display. · Refer to page 3-11. | - |
| | | Monitor | · Hydraulic temperature and battery voltage display. · Press  : Display ON or OFF. | HYD temp 100.6°C Bat Volt 27.5 V |
| | Engine | Fault code | · Error code display. · Consult a Hyundai dealer to error code. | - |
| | | Monitor | · Engine coolant temperature display. · Press  : Display ON or OFF. | Coolant Temp 57.6°C |
| | Transmission | Fault code | · Error code display. · Consult a Hyundai dealer to error code. | - |
| | | Monitor | Transmission oil temperature display. · Press  : Display ON or OFF. | Oil Temp 37.6°C |
| | Version | | · Display the controller(MCU) and cluster version. | - |

(3) Machine fault code

When selecting the fault code menu, it shows all of the fault codes which mean abnormal conditions of present time.



7707A3CD36

- ※ To go out from fault explanation window, press button.
(Press , to go out to main.)
- ※ **No error** will be indicated in case that there's no fault.

| Description | Code | Meaning | Remark |
|-------------------|------|---|-----------|
| Electrical system | 010 | Power input voltage low | Below 18V |
| | 011 | Power input voltage high | Above 38V |
| | 012 | Alternator voltage low | Below 5V |
| | 013 | Alternator voltage high | Above 36V |
| | 014 | Buzzer circuit open or short to ground | |
| | 015 | Buzzer circuit short to power | |
| Hydraulic system | 020 | Hydraulic oil temperature sensor open or short to power | |
| | 021 | Hydraulic oil temperature sensor short to ground | |
| Engine system | 030 | Fuel level sensor open or short to power | |
| | 031 | Fuel level sensor short to ground | |
| | 034 | Cooling fan driving valve open or short to ground | |
| | 035 | Cooling fan driving valve short to power | |
| T/M system | 050 | Auto select switch supply power open or short to power | |
| | 051 | Auto select switch supply power short to ground | |
| | 052 | Clutch cutoff supply power open or short to power | |
| | 053 | Clutch cutoff supply power short to ground | |
| Steering system | 060 | Emergency steering relay open or short to ground | Option |
| | 061 | Emergency steering relay short to power | Option |
| Communication | 070 | MCU communication error | |
| | 071 | TCU communication error | |
| | 072 | ECM communication error | |

MCU : Machine control unit TCU : Transmission control unit ECM : Engine control module

(4) Transmission warning

| Symbol | Meaning | Remarks |
|------------------|--|--|
| LF, LR | Limp home gear | - |
| F/R/△/▽ flashing | Direction F or R selected while turbine speed is too high, CAUTION gear will engage if turbine speed drops | - |
| | Oil temperature too low, no gear available | Warm up engine / transmission |
| WS | Warning sump temperature | Changes between actual gear/direction while driving, in neutral only displayed if no fault is detected |
| WT | Warning torque converter temperature | Changes between actual gear/direction while driving, in neutral only displayed if no fault is detected |
| WE | Warning high engine speed | Changes between actual gear/direction while driving, in neutral only displayed if no fault is detected |

(5) Display during AEB mode

| Symbol | Meaning | Remarks |
|----------------|---|---|
| K1~K4, KV, KR | Calibrating clutch K1~K4, KV or KR respectively | |
| - And Kx | Wait for start, initialization of clutch Kx, x : 1, 2, 3, 4, V, R | |
| ≡ And Kx | Fast fill time determination of clutch Kx | |
| = And Kx | Compensating pressure determination of clutch Kx | |
| OK | Calibration for all clutches finished | Transmission stays in neutral, you have to restart the TCU(Ignition off/on) |
| STOP | AEB canceled(Activation stopped) | Transmission stays in neutral, you have to restart the TCU(Ignition off/on) |
| STOP and Kx | AEB stopped, clutch Kx can't be calibrated | Transmission stays in neutral, you have to restart the TCU(Ignition off/on) |
| Spanner and Kx | Kx couldn't be calibrated, AEB finished | Transmission stays in neutral, you have to restart the TCU(Ignition off/on) |
| △E | Engine speed too low, - Raise engine speed | |
| ▽E | Engine speed too high, - Lower engine speed | |
| △T | Transmission oil temperature too low, - Heat up transmission | |
| ▽T | Transmission oil temperature too high, - Cool down transmission | |
| FT | Transmission temperature not in defined range during calibration | Transmission stays in neutral, you have to restart the TCU(Ignition off/on) |
| FB | Operating mode not NORMAL or transmission temperature sensor defective or storing of calibrated values to EEPROM has failed | Transmission stays in neutral, you have to restart the TCU(Ignition off/on) |
| FO | Output speed not zero | Transmission stays in neutral, you have to restart the TCU(Ignition off/on) |
| FN | Shift lever not in neutral position | Transmission stays in neutral, you have to restart the TCU(Ignition off/on) |
| FP | Park brake not applied | Transmission stays in neutral, you have to restart the TCU(Ignition off/on) |

※ **AEB mode** : It controls the disk internal of the transmission, automatically.