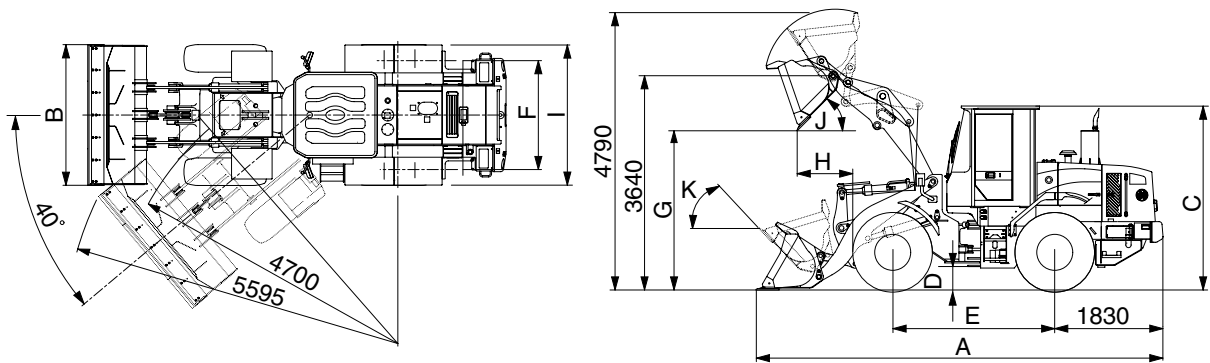


## 2. SPECIFICATIONS

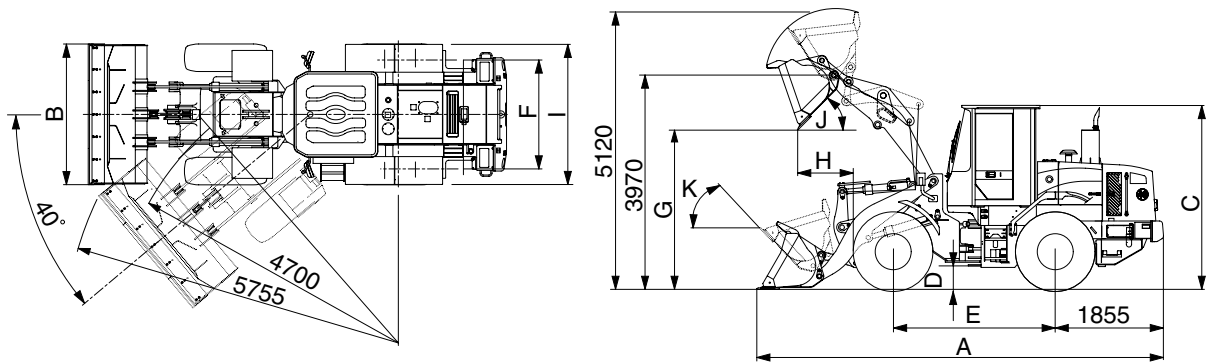
### 1) WITH BOLT-ON CUTTING EDGE TYPE BUCKET(HL730-7A)



7307A2SP02

| Description                                    |                 | Unit                              | Specification |
|--|-----------------|-----------------------------------|---------------|
| Operating weight                               |                 | kg(lb)                            | 9700(21400)   |
| Bucket capacity                                | Struck          | m <sup>3</sup> (yd <sup>3</sup> ) | 1.5(2.0)      |
|  | Heaped          |                                   | 1.8(2.4)      |
| Overall length                                 | A               | mm(ft-in)                         | 6850(22' 6")  |
| Overall width                                  | B               |                                   | 2450(8' 0")   |
| Overall height                                 | C               |                                   | 3170(10' 5")  |
| Ground clearance                               | D               |                                   | 370(1' 3")    |
| Wheelbase                                      | E               |                                   | 2750(9' 0")   |
| Tread  | F               |                                   | 1850(6' 0")   |
| Dump clearance at 45°                          | G               |                                   | 2730(8' 11")  |
| Dump reach(Full lift)                          | H               |                                   | 1005(3' 4")   |
| Width over tires                               | I               |                                   | 2295(7' 6")   |
| Dump angle                                     | J               |                                   | Degree (°)    |
| Roll back angle(Carry position)                | K               | 48                                |               |
| Cycle time                                     | Lift(With load) | sec                               | 5.6           |
|  | Dump(With load) |                                   | 1.0           |
|  | Lower(Empty)    |                                   | 2.8           |
| Maximum travel speed                           |                 | km/hr(mph)                        | 36.0(22.4)    |
| Braking distance                               |                 | m(ft-in)                          | 12(39' 4")    |
| Minimum turning radius(Center of outside tire) |                 |                                   | 4.7(15' 5")   |
| Gradability                                    |                 | Degree (°)                        | 30            |
| Travel speed                                   | Forward         | First gear                        | 6.2(3.9)      |
|  |                 | Second gear                       | 11.4(7.1)     |
|  |                 | Third gear                        | 22.1(13.7)    |
|  |                 | Fourth gear                       | 36.0(22.4)    |
|  | Reverse         | First gear                        | 6.5(4.0)      |
|  |                 | Second gear                       | 12.0(7.5)     |
| Third gear                                     |                 | 23.1(14.4)                        |               |

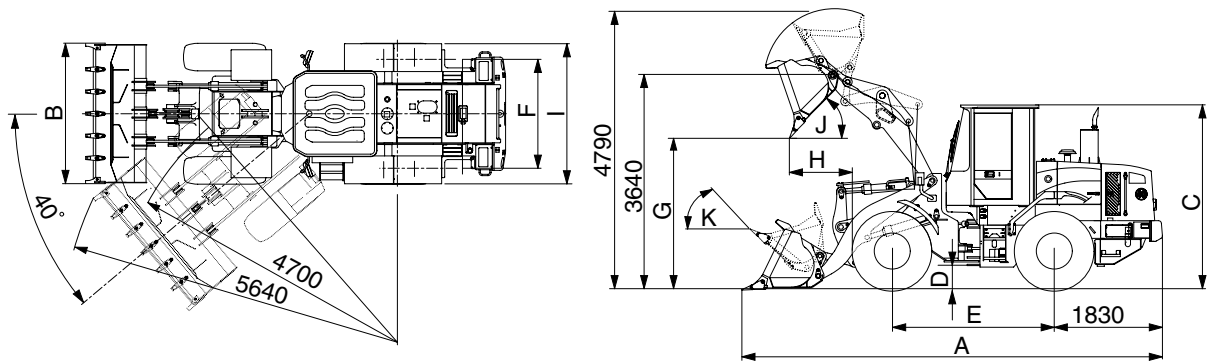
**WITH BOLT-ON CUTTING EDGE TYPE BUCKET(HL730XTD-7A)**



7307A2SP02-1

| Description                                    |                 | Unit                              | Specification |            |
|--|-----------------|-----------------------------------|---------------|------------|
| Operating weight                               |                 | kg(lb)                            | 9900(21830)   |            |
| Bucket capacity                                | Struck          | m <sup>3</sup> (yd <sup>3</sup> ) | 1.5(2.0)      |            |
|  | Heaped          |                                   | 1.8(2.4)      |            |
| Overall length                                 | A               | mm(ft-in)                         | 7200(23' 7")  |            |
| Overall width                                  | B               |                                   | 2450(8' 0")   |            |
| Overall height                                 | C               |                                   | 3170(10' 5")  |            |
| Ground clearance                               | D               |                                   | 370(1' 3")    |            |
| Wheelbase                                      | E               |                                   | 2750(9' 0")   |            |
| Tread  | F               |                                   | 1850(6' 0")   |            |
| Dump clearance at 45°                          | G               |                                   | 3060(10' 0")  |            |
| Dump reach(Full lift)                          | H               |                                   | 1010(3' 4")   |            |
| Width over tires                               | I               |                                   | 2295(7' 6")   |            |
| Dump angle                                     | J               |                                   | Degree (°)    | 48         |
| Roll back angle(Carry position)                | K               |                                   |               | 49         |
| Cycle time                                     | Lift(With load) | sec                               | 5.6           |            |
|  | Dump(With load) |                                   | 1.0           |            |
|  | Lower(Empty)    |                                   | 2.8           |            |
| Maximum travel speed                           |                 | km/hr(mph)                        | 36.0(22.4)    |            |
| Braking distance                               |                 | m(ft-in)                          | 12(39' 4")    |            |
| Minimum turning radius(Center of outside tire) |                 |                                   | 4.7(15' 5")   |            |
| Gradability                                    |                 | Degree (°)                        | 30            |            |
| Travel speed                                   | Forward         | km/hr(mph)                        | First gear    | 6.2(3.9)   |
|  |                 |                                   | Second gear   | 11.4(7.1)  |
|  |                 |                                   | Third gear    | 22.1(13.7) |
|  |                 |                                   | Fourth gear   | 36.0(22.4) |
|  | Reverse         |                                   | First gear    | 6.5(4.0)   |
|  |                 |                                   | Second gear   | 12.0(7.5)  |
| Third gear                                     |                 | 23.1(14.4)                        |               |            |

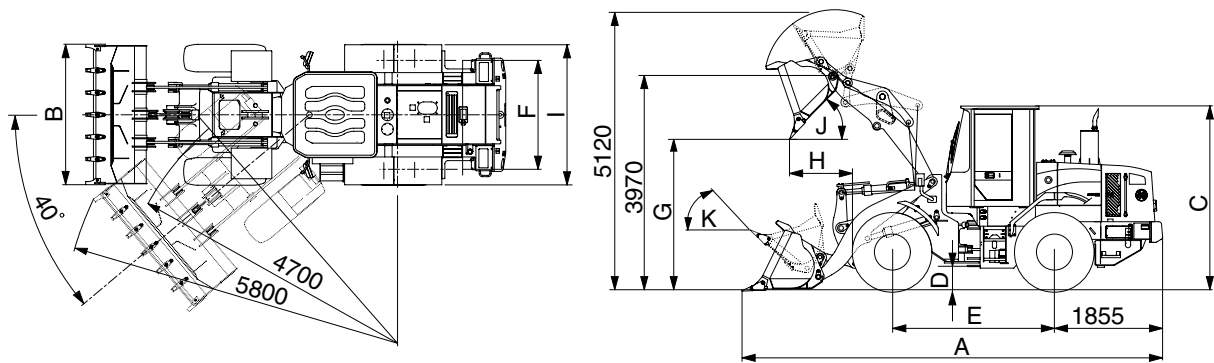
## 2) WITH TOOTH TYPE BUCKET(HL730-7A)



7307A2SP04

| Description                                    |                 | Unit                              | Specification |    |
|--|-----------------|-----------------------------------|---------------|----|
| Operating weight                               |                 | kg(lb)                            | 9700(21400)   |    |
| Bucket capacity                                | Struck          | m <sup>3</sup> (yd <sup>3</sup> ) | 1.4(1.9)      |    |
|  | Heaped          |                                   | 1.7(2.2)      |    |
| Overall length                                 | A               | mm(ft-in)                         | 6950(22' 10") |    |
| Overall width                                  | B               |                                   | 2480( 8' 2")  |    |
| Overall height                                 | C               |                                   | 3170(10' 5")  |    |
| Ground clearance                               | D               |                                   | 370( 1' 3")   |    |
| Wheelbase                                      | E               |                                   | 2750( 9' 0")  |    |
| Tread  | F               |                                   | 1850( 6' 0")  |    |
| Dump clearance at 45°                          | G               |                                   | 2640( 8' 8")  |    |
| Dump reach(Full lift)                          | H               |                                   | 1075( 3' 6")  |    |
| Width over tires                               | I               |                                   | 2295( 7' 6")  |    |
| Dump angle                                     | J               |                                   | Degree (°)    | 48 |
| Roll back angle(Carry position)                | K               |                                   |               | 48 |
| Cycle time                                     | Lift(With load) | sec                               | 5.6           |    |
|  | Dump(With load) |                                   | 1.0           |    |
|  | Lower(Empty)    |                                   | 2.8           |    |
| Maximum travel speed                           |                 | km/hr(mph)                        | 36.0(22.4)    |    |
| Braking distance                               |                 | m(ft-in)                          | 12(39' 4")    |    |
| Minimum turning radius(Center of outside tire) |                 |                                   | 4.7(15' 5")   |    |
| Gradability                                    |                 | Degree (°)                        | 30            |    |
| Travel speed                                   | Forward         | km/hr(mph)                        | First gear    |    |
|  |                 |                                   | Second gear   |    |
|  |                 |                                   | Third gear    |    |
|  |                 |                                   | Fourth gear   |    |
|  | Reverse         |                                   | First gear    |    |
|  |                 |                                   | Second gear   |    |
| Third gear                                     |                 |                                   |               |    |

**WITH TOOTH TYPE BUCKET(HL730XTD-7A)**



7307A2SP04-1

| Description                                    |                 | Unit                              | Specification |    |
|--|-----------------|-----------------------------------|---------------|----|
| Operating weight                               |                 | kg(lb)                            | 9900(21830)   |    |
| Bucket capacity                                | Struck          | m <sup>3</sup> (yd <sup>3</sup> ) | 1.4(1.9)      |    |
|  | Heaped          |                                   | 1.7(2.2)      |    |
| Overall length                                 | A               | mm(ft-in)                         | 7300(23' 11") |    |
| Overall width                                  | B               |                                   | 2480(8' 2")   |    |
| Overall height                                 | C               |                                   | 3170(10' 5")  |    |
| Ground clearance                               | D               |                                   | 370(1' 3")    |    |
| Wheelbase                                      | E               |                                   | 2750(9' 0")   |    |
| Tread  | F               |                                   | 1850(6' 0")   |    |
| Dump clearance at 45°                          | G               |                                   | 2970(9' 9")   |    |
| Dump reach(Full lift)                          | H               |                                   | 1090(3' 7")   |    |
| Width over tires                               | I               |                                   | 2295(7' 6")   |    |
| Dump angle                                     | J               |                                   | Degree (°)    | 48 |
| Roll back angle(Carry position)                | K               |                                   |               | 49 |
| Cycle time                                     | Lift(With load) | sec                               | 5.6           |    |
|  | Dump(With load) |                                   | 1.0           |    |
|  | Lower(Empty)    |                                   | 2.8           |    |
| Maximum travel speed                           |                 | km/hr(mph)                        | 36.0(22.4)    |    |
| Braking distance                               |                 | m(ft-in)                          | 12(39' 4")    |    |
| Minimum turning radius(Center of outside tire) |                 |                                   | 4.7(15' 5")   |    |
| Gradability                                    |                 | Degree (°)                        | 30            |    |
| Travel speed                                   | Forward         | First gear                        | 6.2(3.9)      |    |
|  |                 | Second gear                       | 11.4(7.1)     |    |
|  |                 | Third gear                        | 22.1(13.7)    |    |
|  |                 | Fourth gear                       | 36.0(22.4)    |    |
|  | Reverse         | First gear                        | 6.5(4.0)      |    |
|  |                 | Second gear                       | 12.0(7.5)     |    |
| Third gear                                     |                 | 23.1(14.4)                        |               |    |