

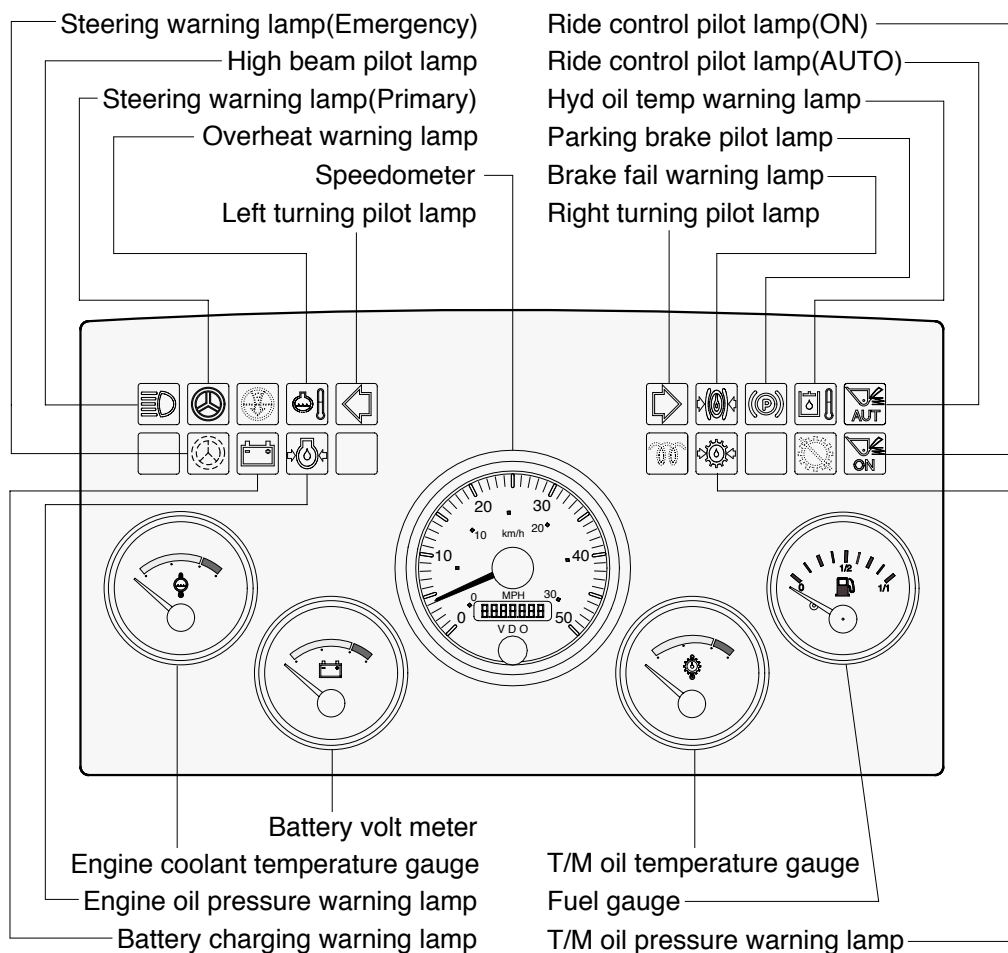
2. CLUSTER

The gauges panel consists of gauges and monitors as shown below, to warn the operator in case of abnormal machine operation or conditions for the appropriate operation and inspection.

- Gauges : Indicate operating status of the machine.
- Warning lamp : Indicate abnormality of the machine.
- Pilot lamp : Indicate operating status of the machine.

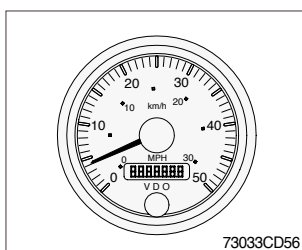
The monitor installed on this machine does not entirely guarantee the condition of the machine.

Daily inspection should be performed according to chapter 6, MAINTENANCE.



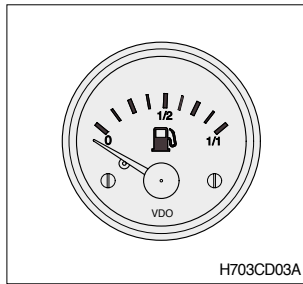
7203CCD00

1) SPEEDOMETER



- (1) The speedometer displays the speed of machine in mph and km/h.

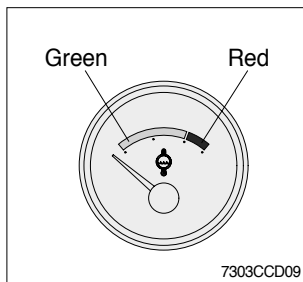
2) FUEL GAUGE



- (1) This gauge indicates the amount of fuel in the fuel tank.
- (2) Fill the fuel when the indicator moves 0 point, refuel as soon as possible to avoid running out of fuel.

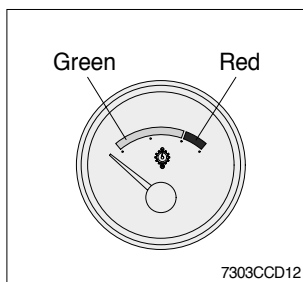
If the gauge indicates below 0 point even though the machine is on the normal condition, check the electric device as that can be caused by the poor connection of electricity or sensor.

3) ENGINE COOLANT TEMPERATURE GAUGE



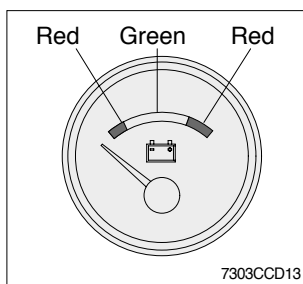
- (1) This indicates the temperature of coolant.
 - Green range : 40-105°C(104-221°F)
 - Red range : 105°C(221°F) Above
- (2) The green range illuminates when operating.
- (3) Keep idling engine at low speed until the green range illuminates, before operation of machine.
- (4) When the red range illuminates, turn OFF the engine, check the radiator and engine.

4) TRANSMISSION OIL TEMPERATURE GAUGE



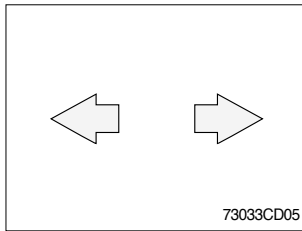
- (1) This range indicates the temperature of transmission oil.
 - Green range : 50-120°C(99-248°F)
 - Red range : 120°C(248°F) Above
- (2) The green range indicates when operating.
- (3) Keep idling engine at low speed until the green range indicates, before operation of machine.
- (4) If the indicator is in the red range, it means the transmission is overheated. Be careful that the indicator does not move into the red range.

5) BATTERY VOLT METER



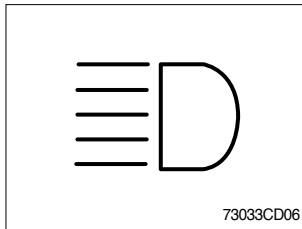
- (1) This gauge indicates the voltage in the charging system when the engine is running.
- (2) If the indicator is below 20V(Red range), it means that the electricity is being discharged. If the indicator is above 28V(Red range), an unusually high voltage may damage the alternator. Check the charging system in both cases.

6) DIRECTION PILOT LAMP



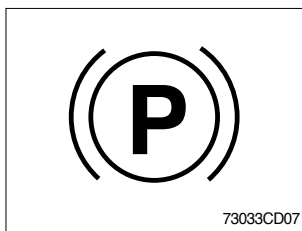
- (1) This lamp flashes when the signal indicator lever is moved.
- (2) When the lamp lights up, the alarm(50dB) sounds.

7) HIGH BEAM PILOT LAMP



- (1) This lamp works when the illuminating direction is upward.
- (2) This lamp comes ON when the dimmer switch is operated, e.g., when passing another vehicle.

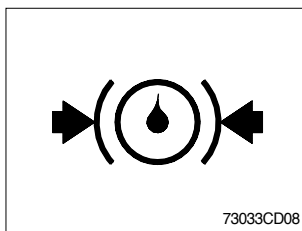
8) PARKING BRAKE PILOT LAMP



- (1) When the parking brake is actuated, the lamp lights ON.

Check the lamp is OFF before driving.

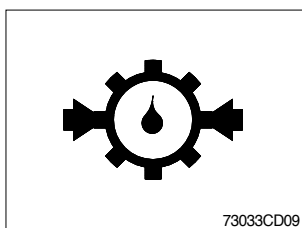
9) BRAKE FAIL WARNING LAMP



- (1) The lamp lights ON when the oil pressure of service brake drops below the normal range.
- (2) When the lamp is ON, stop the engine and check for its cause.

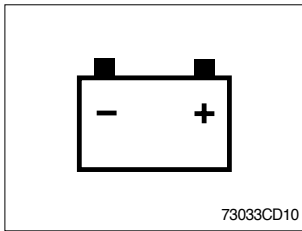
Do not operate until any problems are corrected.

10) TRANSMISSION OIL PRESSURE WARNING LAMP



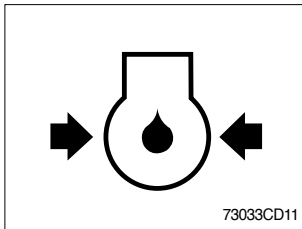
- (1) The lamp lights ON when the oil pressure of the transmission drops.
- (2) When the lamp is ON, stop the engine and check the transmission system.

11) BATTERY CHARGING WARNING LAMP



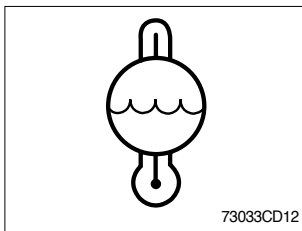
- (1) This lamp is ON when key ON, it is turned OFF after starting the engine.
- (2) Check the battery charging circuit when this lamp comes ON, during engine operation.

12) ENGINE OIL PRESSURE WARNING LAMP



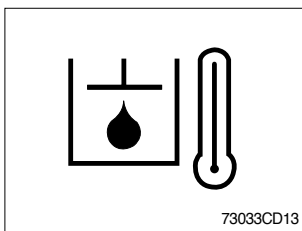
- (1) If lamp comes ON during engine operation, shut OFF engine immediately. Check oil level.

13) OVERHEAT WARNING LAMP



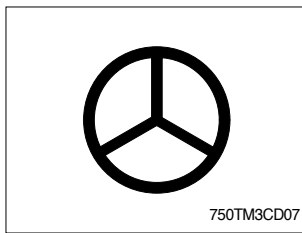
- (1) This lamp is turned ON when the temperature of cooling water is over the normal temperature (110°C, 230°F).
- (2) Check the cooling system when the lamp is ON.

14) HYDRAULIC OIL TEMP WARNING LAMP



- (1) This warning lamp operates and the buzzer sounds when the temperature of hydraulic oil is over 105°C(221°F).
- (2) Check the hydraulic oil level when the lamp is turned ON.
- (3) Check for debris between oil cooler and radiator.

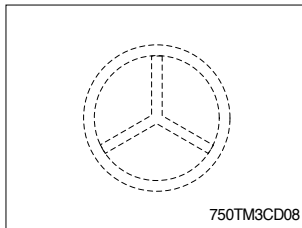
15) STEERING WARNING LAMP(Option)



(1) Primary

If the oil pressure in the steering pump drops, the lamp will light up. If this lamp flashes during operation, the action alarm should sound.

If the lamp lights up, immediately pull the machine to a safe place and stop the machine.



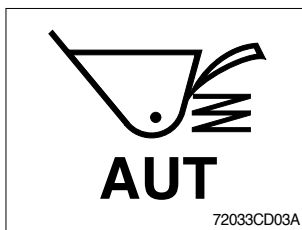
(2) Emergency

This lamp will flash if the oil pressure in the emergency steering pump drops. The lamp notifies the operator that if the steering system also failed at this time, there is no emergency steering system for backup.

Immediately pull the machine to a convenient stop and stop the engine.

This machine is equipped with ground driven emergency steering pump. It is normal for the lamp to flash after 5 seconds when the machine is stopped.

16) RIDE CONTROL PILOT LAMP(Option)



(1) Auto ride control

This lamp lights ON when push in the top of the ride control switch in order to turn on the automatic ride control.



(2) Ride control

This lamp lights ON when push in the bottom of the ride control switch in order to turn on the system for ride control.