

FOREWORD

This manual contains a number of instructions and safety recommendations regarding driving, handling, lubrication, maintenance, inspection and adjustment of the backhoe loader.

The manual is to promote safety maintenance and enhance machine performance.

Keep this manual handy and have all personnel read it periodically.

If you sell the machine, be sure to give this manual to the new owners.

This machine complies with EC directive "2006/42/EC".

1. **Read** and **understand** this manual before operating the machine.

This operator's manual may contain attachments and optional equipment that are not available in your area. Please consult your local Hyundai distributor for those items you require.

Improper operation and maintenance of this machine can be hazardous and could result in serious injury or death.

Some actions involved in operation and maintenance of the machine can cause a serious accident, if they are not done in a manner described in this manual.

The procedures and precautions given in this manual apply only to intended uses of the machine.

If you use your machine for any unintended uses that are not specifically prohibited, you must be sure that it is safe for you and others. In no event should you or others engage in prohibited uses of actions as described in this manual.

2. **Inspect** the jobsite and **follow** the safety recommendations in the **safety hints** section before operating the machine.

3. Use **genuine Hyundai spare parts** for the replacement of parts.

We expressly point out that Hyundai will not accept any responsibility for defects resulting from non-genuine parts or non workmanlike repair.

In such cases Hyundai cannot assume liability for any damage.

Continuing improvements in the design of this machine can lead to changes in detail which may not be reflected in this manual. Consult Hyundai or your Hyundai distributor for the latest available information for your machine or for questions regarding information in this manual.

BEFORE SERVICING THIS MACHINE

It is the responsibility of the owner and all service and maintenance personnel to avoid accidents and serious injury by keeping this machine properly maintained.

It also is the responsibility of the owner and all service and maintenance personnel to avoid accidents and serious injury while servicing the machine.

No one should service or attempt to repair this machine without proper training and supervision.

All service and maintenance personnel should be thoroughly familiar with the procedures and precautions contained in this manual.

All personnel also must be aware of any federal, state, provincial or local laws or regulations covering the use and service of construction equipment.

The procedures in this manual do not supersede any requirements imposed by federal, state, provincial or local laws.

Hyundai can not anticipate every possible circumstance or environment in which this machine may be used and serviced.

All personnel must remain alert to potential hazards.

Work within your level of training and skill.

Ask your supervisor if you are uncertain about a particular task. Do not try to do too much too fast.

Use your common sense.

EC REGULATION APPROVED

- Noise level (EN474-1 : 2006 and 2000/14/EC) are as followings.

LWA : 107.5 dB

LPA : 85 dB

- The value of vibrations transmitted by the operator's seat are lower than standard value of (EN474-1 : 2006 and 2002/44/EC)

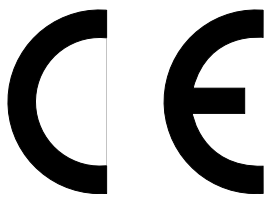
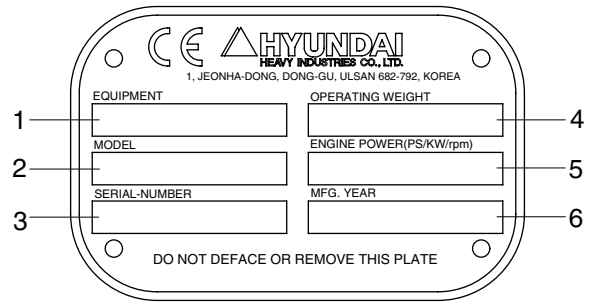
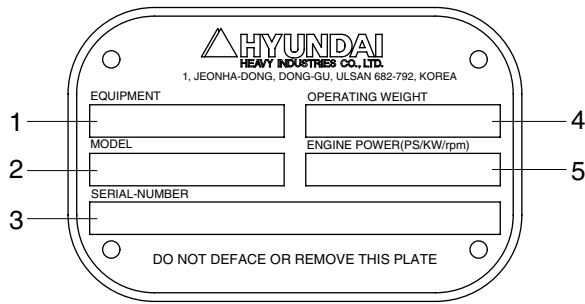


TABLE TO ENTER SERIAL NO. AND DISTRIBUTOR

Machine Serial No.	
Engine Serial No.	
Manufacturing year	
Manufacturer Address	Hyundai Heavy Industries co., Ltd. 1, Jeonha-Dong, Dong-Ku, Ulsan 682-792, Korea
Distributor for USA Address	Hyundai Heavy Industries USA, Inc 955 Estes Avenue EIK Grove village IL, 60001 USA
Distributor for Europe Address	Hyundai Heavy Industries Europe N. V. Vossendal 11 2240 Geel Belgium
Dealer Address	

MACHINE DATA PLATE



FOR EU ONLY

21090FW10

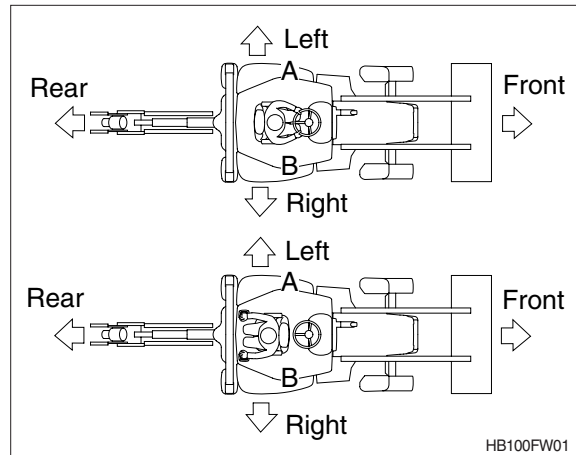
- | | | | | | |
|---|------------|---|------------------|---|--------------------|
| 1 | Equipment | 3 | Serial number | 5 | Engine power |
| 2 | Model name | 4 | Operating weight | 6 | Manufacturing year |

※ The machine serial number assigned to this particular machine and should be used when requesting information or ordering service parts for this machine from your authorized HYUNDAI dealer. The machine serial number is also stamped on the frame.

GUIDE (direction, S/No, symbol)

1. DIRECTION

In this manual, the directions are indicated as shown in the right figure.

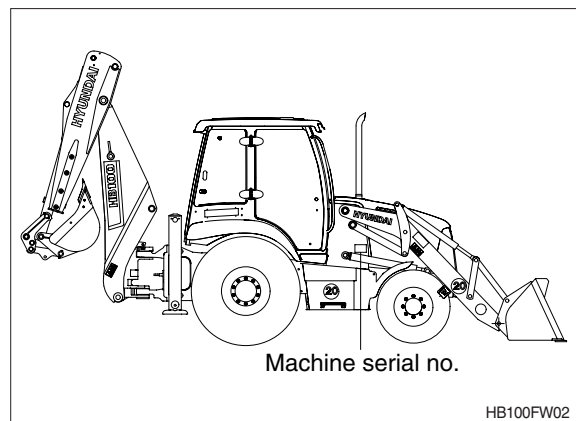


2. SERIAL NUMBER

Inform following when you order parts or the machine is out of order.

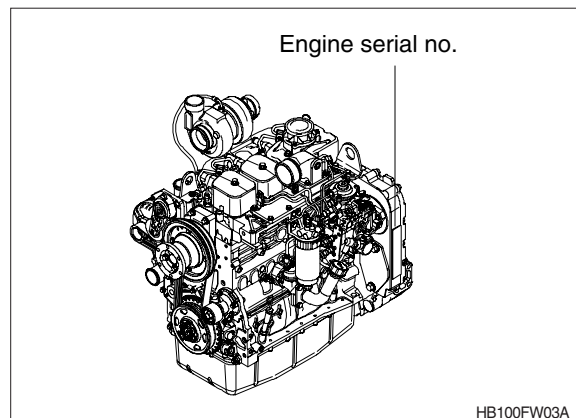
1) MACHINE SERIAL NUMBER

The numbers are located below the right window of the operator's cab.



2) ENGINE SERIAL NUMBER

The numbers are located on the engine name plate.



3. SYMBOLS

▲ Important safety hint.

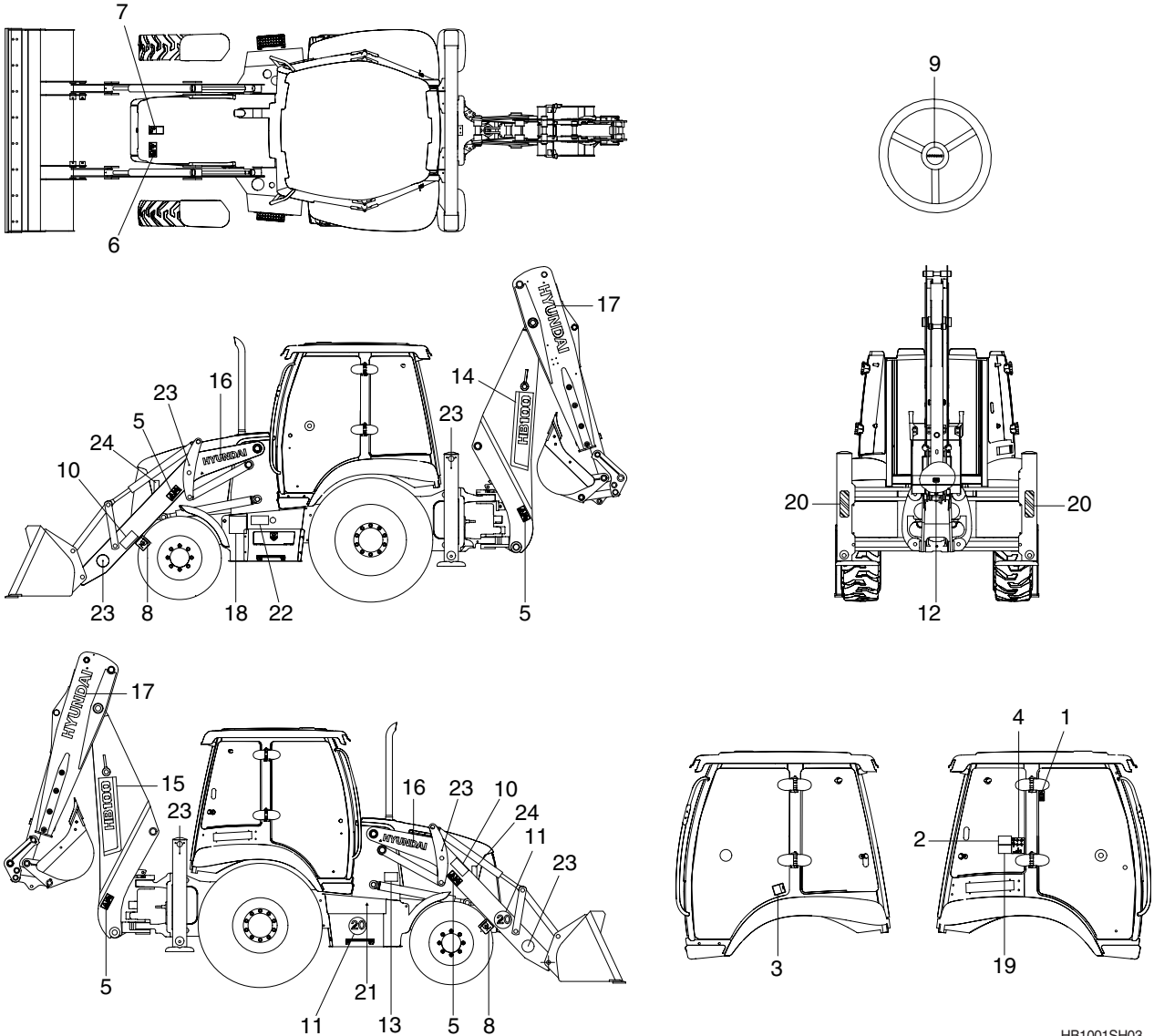
△ It indicates matters which can cause the great loss on the machine or the surroundings.

※ It indicates the useful information for operator.

SAFETY LABELS

1. LOCATION

Always keep these labels clean. If they are lost or damaged, attach them again or replace them with a new label.



- | | | |
|---------------------------|--------------------|------------------------|
| 1 Ref operator manual | 9 Steering wheel | 17 Hyundai logo |
| 2 Overall width | 10 Crush hazard | 18 Service instruction |
| 3 Control ideogram | 11 Speed limit | 19 ROPS cab |
| 4 Machine control pattern | 12 ROPS plate | 20 Keep clear/reflect |
| 5 Bucket stopper | 13 Name plate | 21 Fueling |
| 6 Radiator cap | 14 Model name - LH | 22 Hydraulic oil level |
| 7 Caution engine hood | 15 Model name - RH | 23 Reflector - side |
| 8 Tie | 16 Hyundai logo | 24 Cooling fan |

HB1001SH03

2. DESCRIPTION

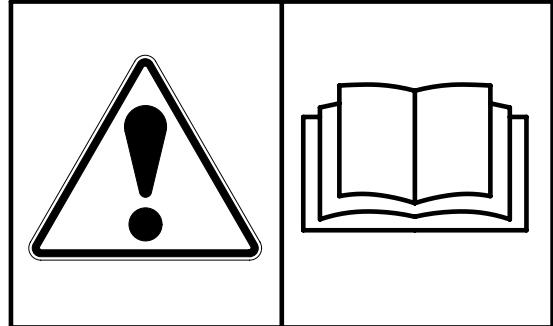
There are several specific warning labels on this machine please become familiarized with all warning labels.

Replace any safety label that is damaged, or missing.

1) REF OPERATOR MANUAL (item 1)

This warning label is positioned on the right side window of the cab.

- ▲ **Study the operator's manual before starting and operating machine.**



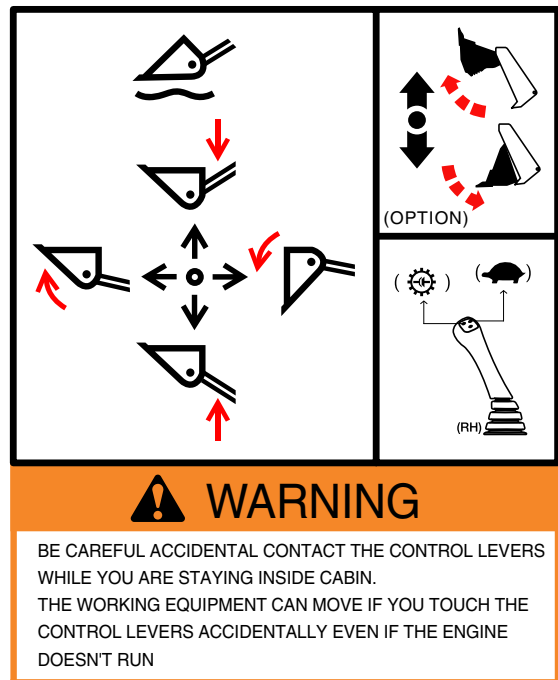
21070FW22

2) CONTROL IDEOGRAM (item 3)

This warning label is positioned on the left side window of the cab.

- ▲ **Confirm the operation of control lever and working device before operating the machine.**

※ Refer to the page 3-18 for details.

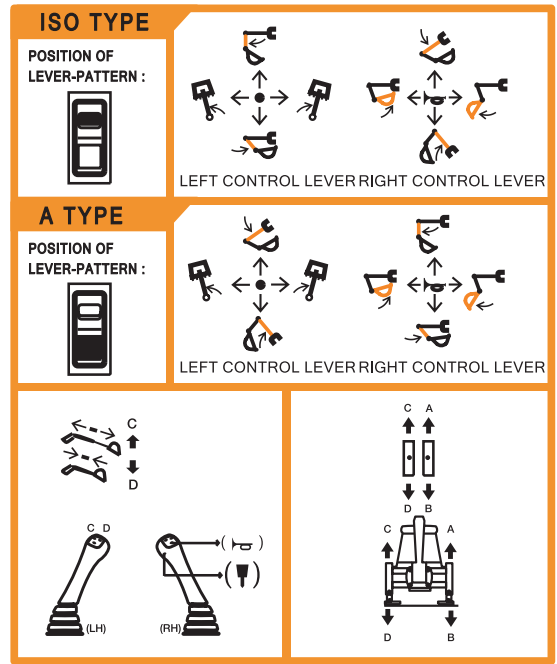


HB100FW05

3) MACHINE CONTROL PATTERN (item 4)

This warning label is positioned in the right window of the cab.

- ⚠ Check the machine control pattern for conformance to pattern on this label. If not, change label to match pattern before operating machine.
- ⚠ Failure to do so could result in injury or death.
- ✳ Refer to the page 3-20 for details.

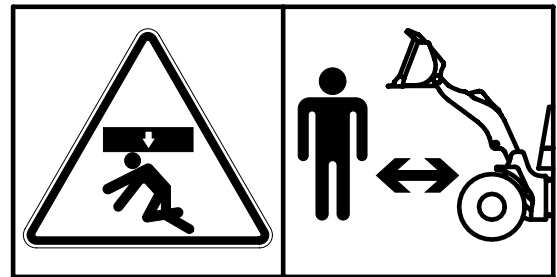


HB100FW06

4) BUCKET STOPPER (item 5)

These warning labels are positioned on the both sides of the booms.

- ⚠ When working under or around the bucket or linkage, with bucket raised, proper support must be provided for the bucket and/or the linkage.



7803AFW05

5) RADIATOR CAP (item 6)

This warning label is positioned on the engine hood.

- ⚠ Never open the filler cap while engine running or at high coolant temperature.



77070FW11

6) CAUTION ENGINE HOOD (item 7)

The warning label is positioned on the engine hood.

- ▲ Be sure to support the stay when the door needs to be opened.
- ▲ Be careful that the opened door may be closed by the external or natural force like strong wind.

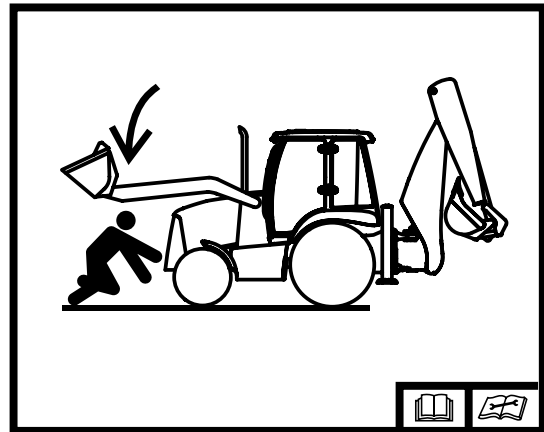


HB100FW07

7) CRUSH HAZARD (item 10)

Never walk or work under equipment unless it is supported by a mechanical device. Equipment which is supported only by a hydraulic device can drop and injure you if the hydraulic system fails or if the control is operated (even with the engine stopped).

- ▲ Empty the shovel and raise the loader arms fully.
- ▲ Stop the engine and remove the starter key.
- ▲ Release the safety bar.
- ▲ Install the safety bar.
- ▲ Lower the arm onto the safety bar.

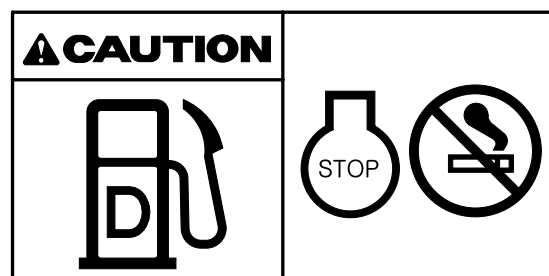


HB100FW08

8) FUELING (item 21)

This warning label is positioned on the right side of fuel tank.

- ▲ Stop the engine when refueling. All lights or flames shall be kept at a safe distance while refueling.



21070FW04

9) HYDRAULIC OIL LEVEL (item 22)

This warning label is positioned on the left side of hydraulic oil tank.

- ▲ Place the bucket on the ground whenever servicing the hydraulic system.
- ※ Check oil level on the level gauge.
- ※ Refill the recommended hydraulic oil up to specified level if necessary.

