

8. LUBRICATION

※ Supply grease through the grease nipple, using grease gun.

※ After lubricating, clean off spilled grease.

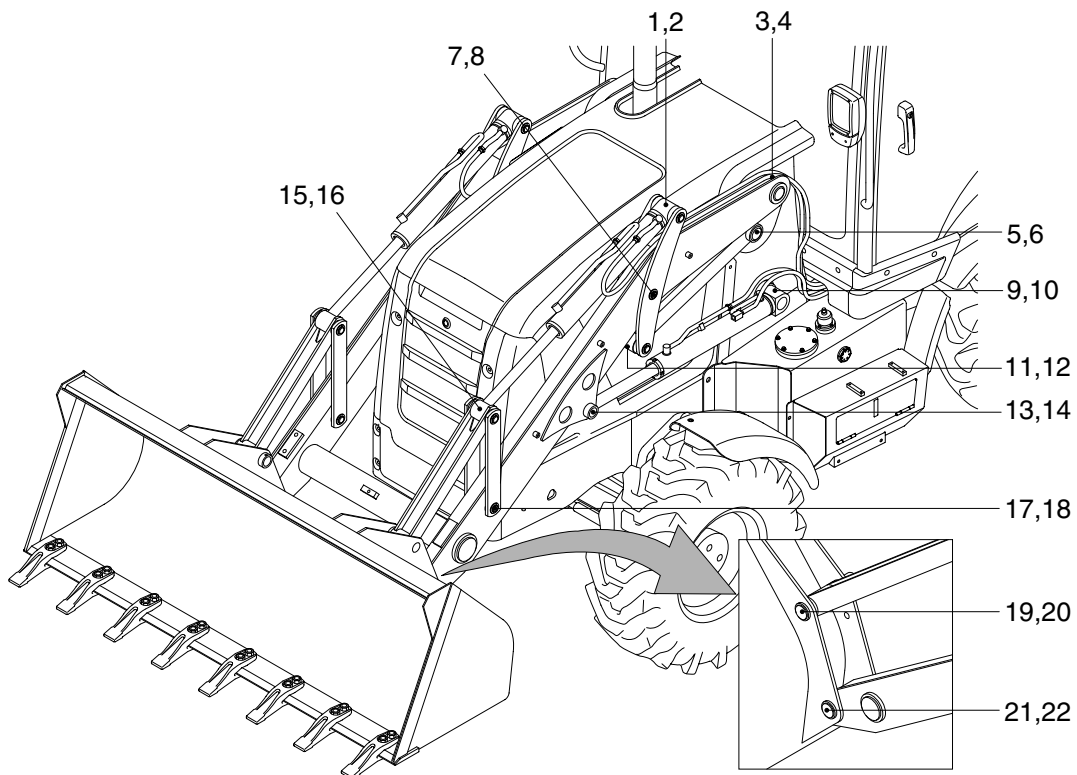
▲ Press the parking brake switch and set the FNR lever to neutral.

▲ Set the work equipment in a stable position and turn the hydraulic safety switch (backhoe) into the lock position.

1) LOADER

For each grease point shown, there is another on the other side of the machine.

Total 22 grease points.

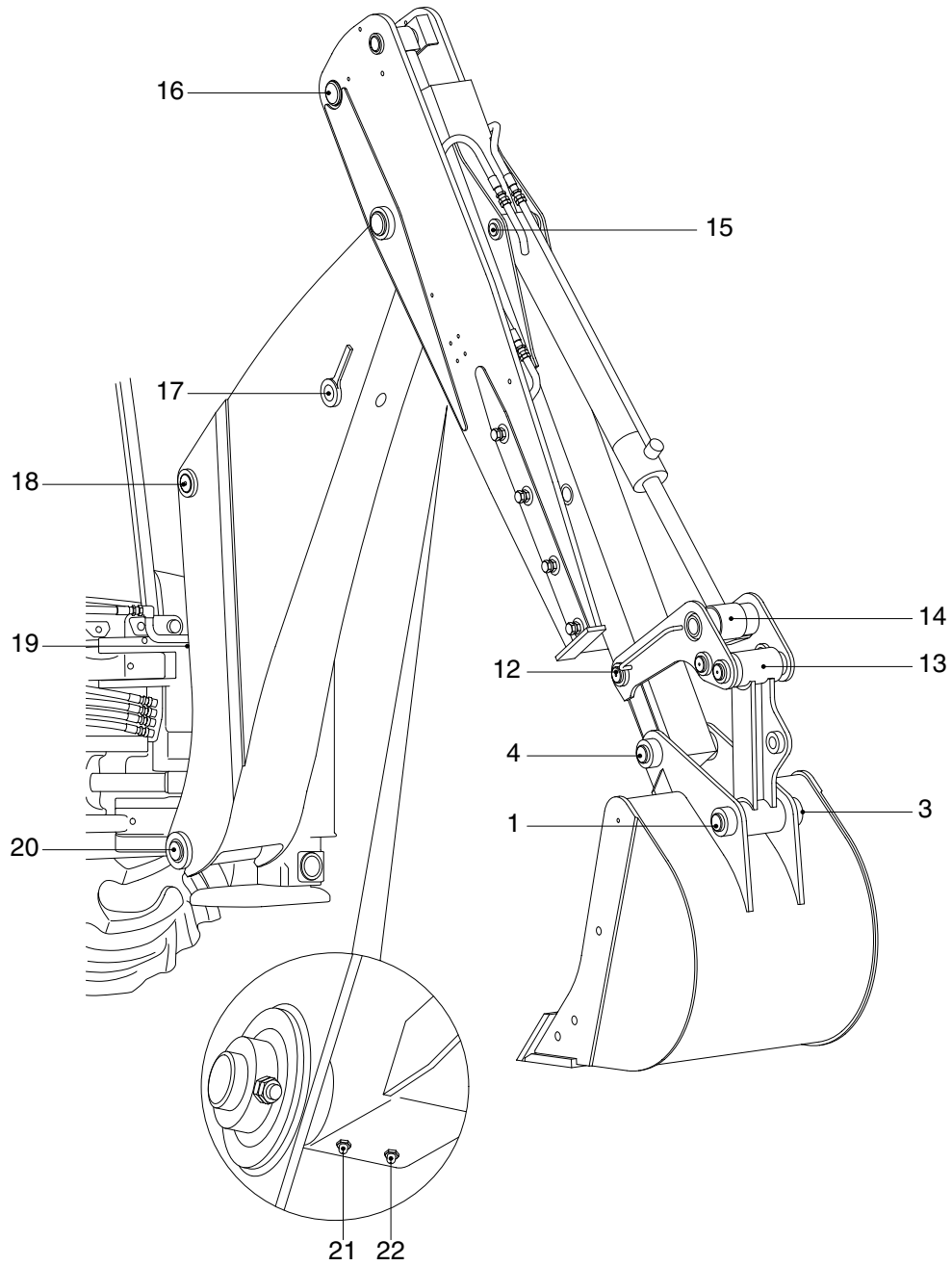


HB1006MA08

2) BACKHOE

※ 22 Grease points

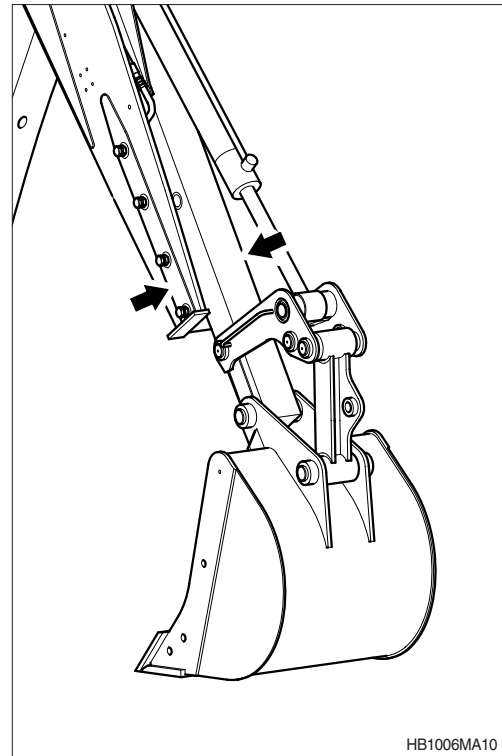
Figure shows a standard boom and dipper arrangement.



HB1006MA09

3) EXTENDING DIPPER

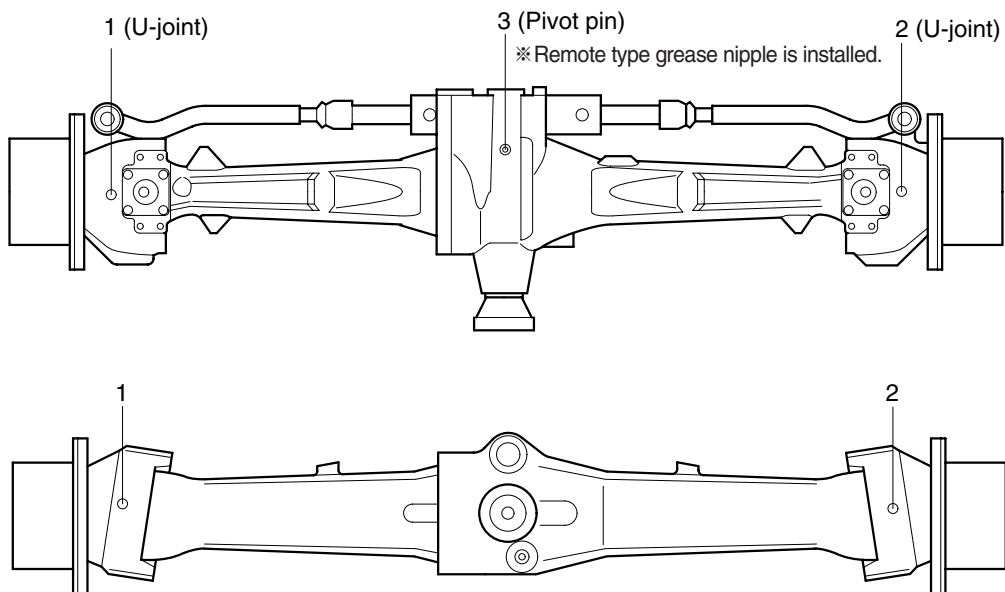
- ※ Extending dipper slides
- Grease : Shell Retinax HDX2



HB1006MA10

4) FRONT AXLE

- ※ 3 Grease points

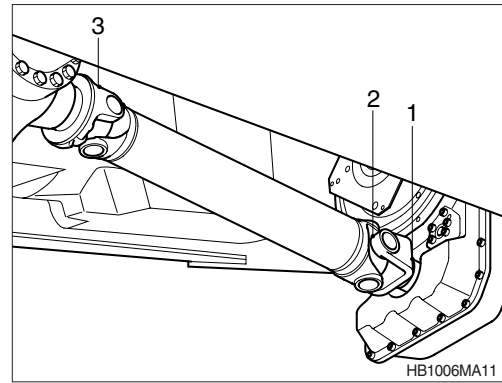


HB1006MA62

5) DRIVESHAFTS

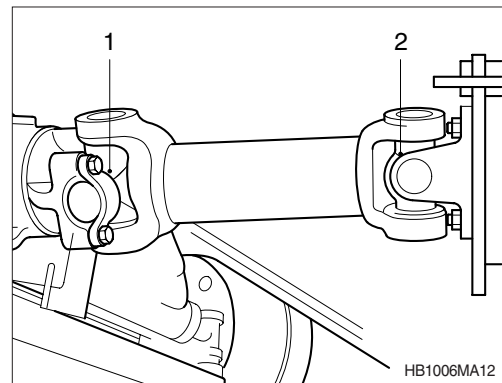
(1) Front driveshaft

3 Grease points



(2) Rear driveshaft

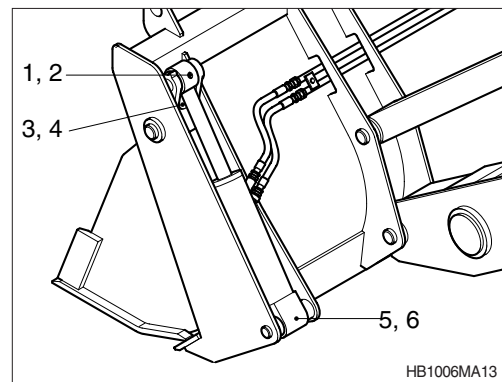
2 Grease points



6) CLAMSHOVEL

3 Grease points each end

Total 6 grease points



7) KINGPOST

9 Grease points

